



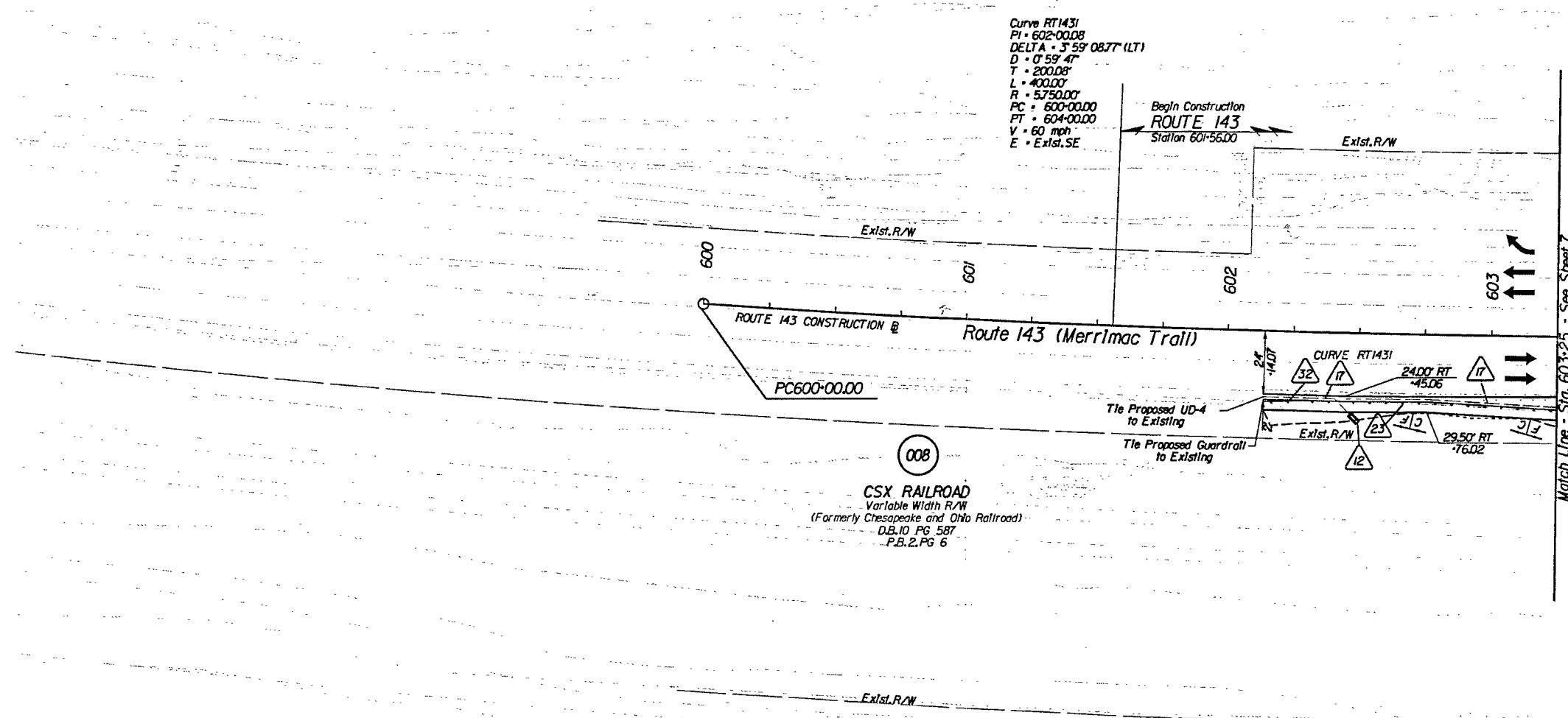
PROJECT MANAGER Mr. Wafi Zaman, PE - VDOT Hampton Roads District - (757) 956-3272
SURVEYED BY, DATE Dewberry Engineers Inc., 03/2020
DESIGNED BY, Dewberry Engineers Inc. - (804) 205-3340
SUBSURFACE UTILITY BY, Accumark, 04/2020

Dewberry Engineers Inc. Glen Allen, Virginia HYDRAULIC ENGINEER	Dewberry Engineers Inc. Glen Allen, Virginia ROADWAY ENGINEER

REVISED	STATE	ROUTE	PROJECT	SHEET NO.
	VA.	60	0060-047-627 R-201 C-501	12

DESIGN FEATURES RELATING TO CONSTRUCTION OR TO REGULATION AND CONTROL OF TRAFFIC MAY BE SUBJECT TO CHANGE AS DEEMED NECESSARY BY THE DEPARTMENT

009
VIRGINIA PENINSULA REGIONAL JAIL AUTHORITY
DB 750 PG 172
D.O.C. D.B. 757, PG. 888
D.O.C. D.B. 782, PG. 63
15.28 AC. (PER ASSESSMENT)
PARCEL ID# 6010100011



008
CSX RAILROAD
Variable Width R/W
(Formerly Chesapeake and Ohio Railroad)
D.B. 10 PG 587
P.B. 2 PG 6

Key Legend

- | | | | |
|--|---|---|---|
| 1 6" Curb, Sfd, CG-2 Req'd. | 12 Underdrain Endwall, Sfd, EW-12 Req'd. | 23 Guardrail, Sfd, GR-MGSI Req'd. | 34 Remove Exst. Guardrail |
| 2 4" Curb, Sfd, CG-3 Req'd. | 13 Abandon Pipe, Sfd, PP-1 Req'd. | 24 Guardrail, Sfd, GR-MGSA Req'd. | 35 Remove Exst. Fence |
| 3 6" Curb and Gutter, Sfd, CG-6 Req'd. | 14 Groundwater Underdrain, Sfd, UD-1 Req'd. | 25 Guardrail Terminal, Sfd, GR-MGS2 Req'd. | 36 Remove Exst. Structure |
| 4 4" Curb and Gutter, Sfd, CG-7 Req'd. | 15 Median Underdrain, Sfd, UD-2 Req'd. | 26 Guardrail, Sfd, GR-10, Type I Req'd. | 37 Remove Exst. Pipe |
| 5 Conc. Raised Median, Sfd, MS-1 Req'd. | 16 Sidewalk Underdrain, Sfd, UD-3 Req'd. | 27 Guardrail, Sfd, GR-10, Type II Req'd. | 38 Abandon and Plug Exst. Pipe |
| 6 Conc. Raised Median, Sfd, MS-1A Req'd. | 17 Pavement Underdrain, Sfd, UD-4 Req'd. | 28 Guardrail, Sfd, GR-10, Type III Req'd. | 39 Adj. Exst. Structure |
| 7 Grass Raised Median, Sfd, MS-2 Req'd. | 18 Crossdrain, Sfd, CD-1 Req'd. | 29 Trailing End Terminal, Sfd, GR-MGS3 Req'd. | 40 Clean Out Exst. Structure |
| 8 Entrance Gutter, Sfd, CG-9B Req'd. | 19 Crossdrain, Sfd, CD-2 Req'd. | 30 Fixed Object Att., Sfd, GR-FOA-5 Req'd. | 41 Clean Out Exst. Pipe |
| 9 Entrance Gutter, Sfd, CG-9D Req'd. | 20 Handrail, Sfd, HR-1 Type II Req'd. | 31 Fixed Object Att., Sfd, GR-FOA-2 Req'd. | 42 Full Depth Sawcut |
| 10 Entrance, Sfd, CG-11 Req'd. | 21 Barbed Wire Fence, Sfd, FE-B Req'd. | 32 Guardrail, Sfd, GR-MGS4 | 43 6" Curb and Dry Gutter, Mod, CG-6 Req'd. |
| 11 Curb Ramp, Sfd, CG-12 Req'd. | 22 Chain Link Fence, Sfd, FE-CL Req'd. | 33 Bridge Pier Protection, Sfd, BPPS-1 | 44 Conc. Median Barrier, Sfd, MB-7F Req'd. |

- Denotes Full Depth Pavement
- Denotes Guardrail Bumpout Pavement Section
- Denotes Pavement Demolition
- Denotes Mill & Variable Depth Overlay
- Denotes Milling and Overlay
- Denotes Construction Limits In Cuts
- Denotes Construction Limits In Fills

REFERENCES
(PROFILES, DETAIL & DRAINAGE DESCRIPTION SHEETS, ETC)

- Alignment Data IG
- ESC Phase 1 2D series
- ESC Phase 2 2E series
- ESC Phase 3 2F series
- Merrimac Trail Profile 12A
- Right-of-Way Plan 12RW

SCALE 0 25 50	PROJECT 0060-047-627	SHEET NO. 12
------------------	-------------------------	-----------------

4/19/2021