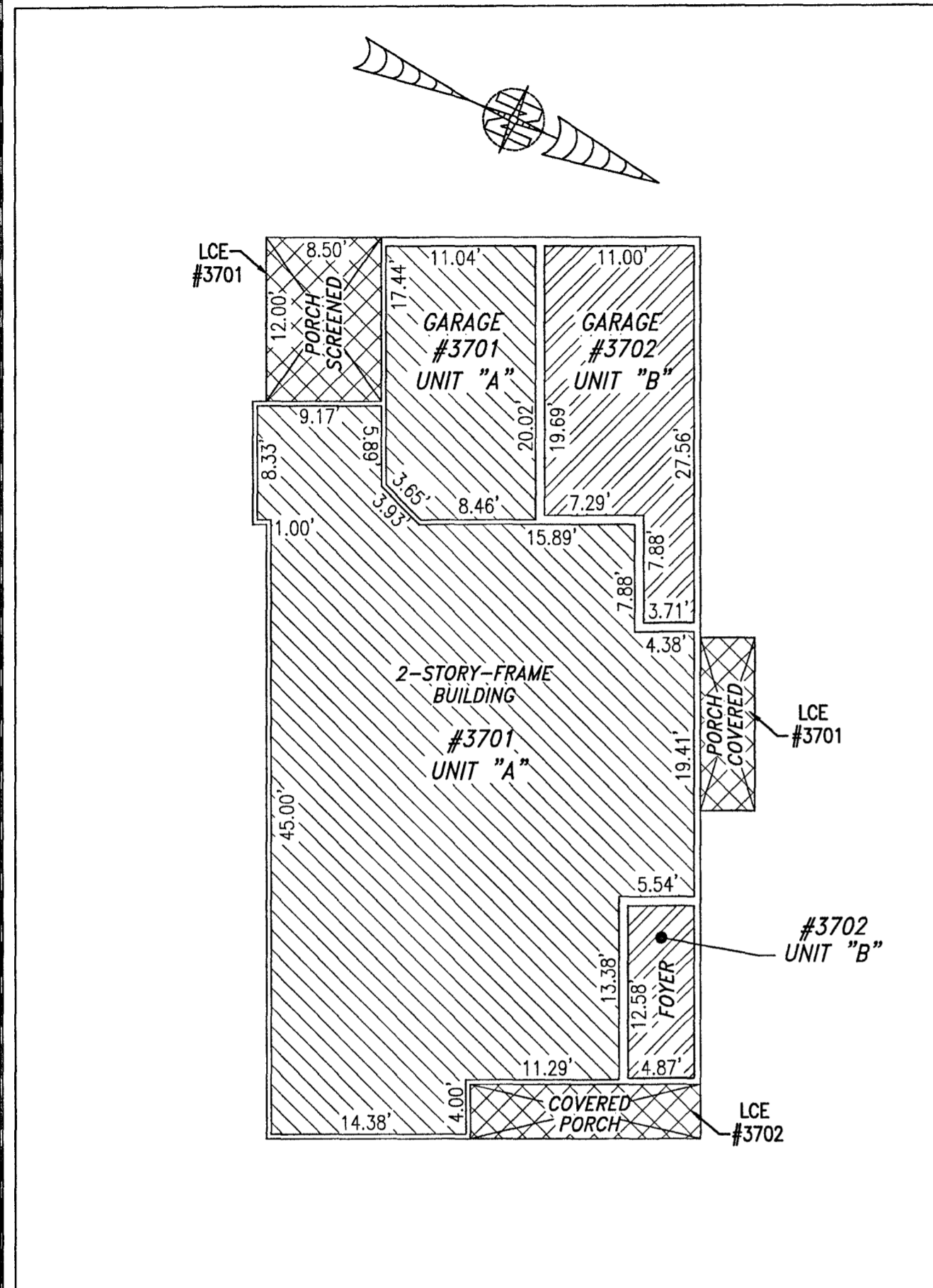
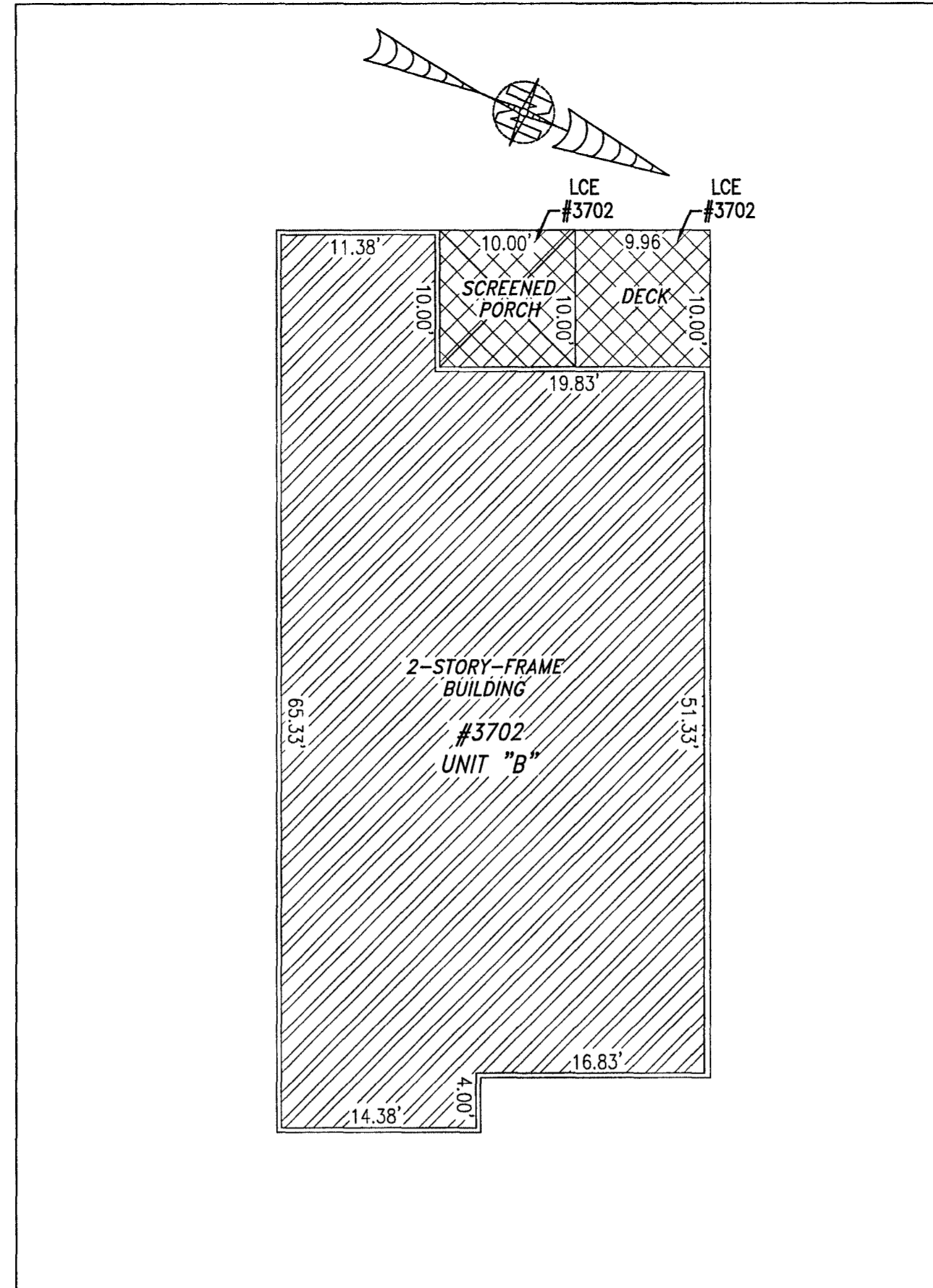


210007709

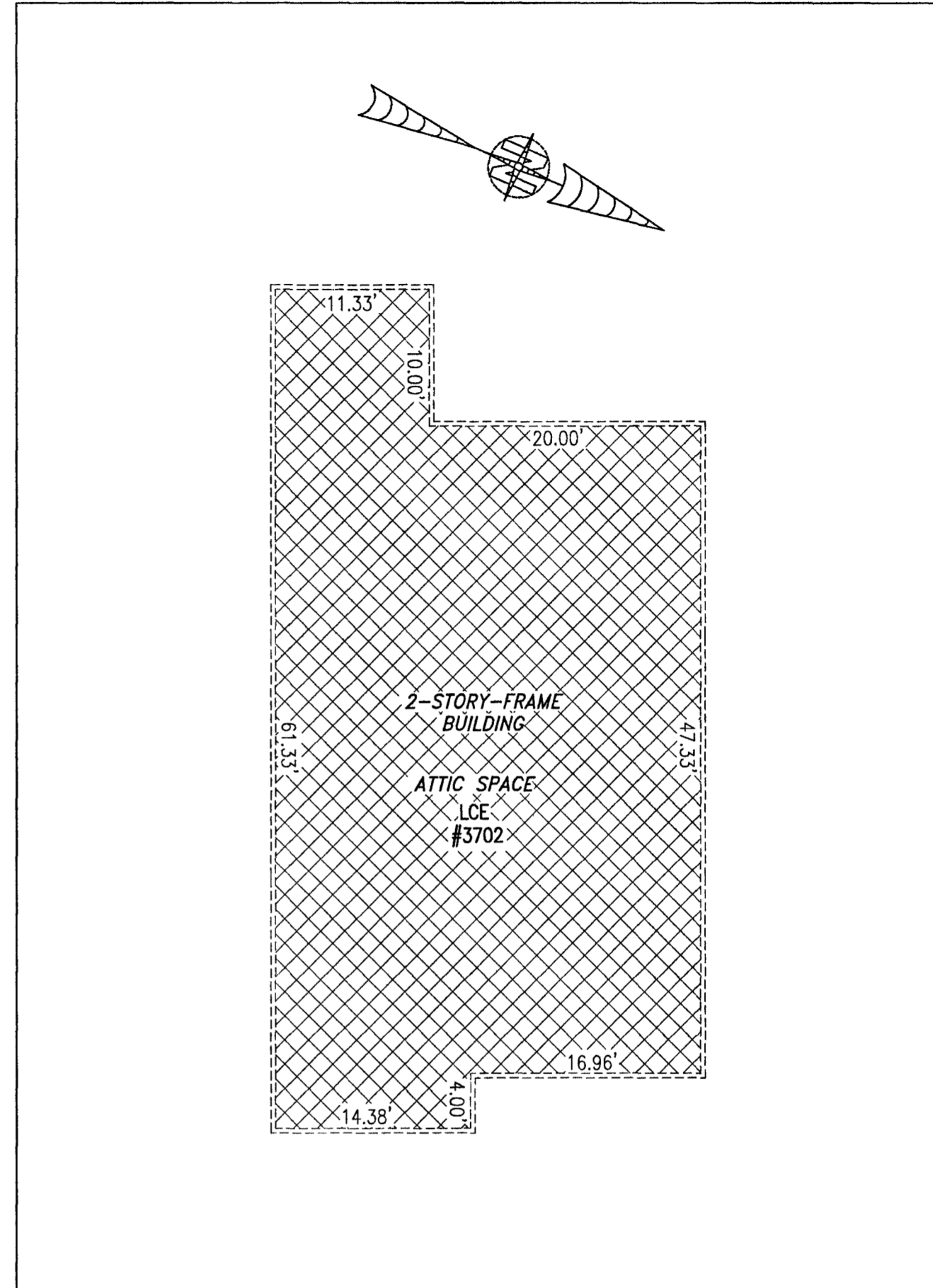
BUILDING 37 (DUPLEX)



FIRST FLOOR



SECOND FLOOR



THIRD FLOOR

I HEREBY CERTIFY THAT THIS PLAT IS ACCURATE AND THAT IT COMPLIES WITH THE PROVISIONS OF THE CODE OF VIRGINIA OF 1950 AS AMENDED, § 55.1-1920A & B AND I FURTHER CERTIFY THAT ALL IMPROVEMENTS THEREOF DEPICTED HEREON, PURSUANT TO THE CODE OF VIRGINIA § 55.1-1920B, ARE SUBSTANTIALLY COMPLETE.

5 Large Plat(s) Recorded herewith as # 210007709

UNIT ID	UNIT DESCRIPTION	UNIT ADDRESS
A	-INDICATES AREA OF UNIT 3701	#3701 QUEENS PATH
B	-INDICATES AREA OF UNIT 3702	#3702 QUEENS PATH
	-INDICATES COMMON ELEMENT	
	-INDICATES LIMITED COMMON ELEMENT	



THIS SHEET: FLOOR PLANS

PHASE 37
CONDOMINIUM PLAT AND PLAN
 OF
THE PROMENADE
 AT
JOHN TYLER
 A CONDOMINIUM
 JAMES CITY COUNTY, VIRGINIA

Jo# 160921

Hayden Frye and Associates, Inc.
Land Surveyors
 333 KELLAM ROAD, SUITE 200
 VIRGINIA BEACH, VA., 23462
 PH: (757) 491-7228 FX: (757) 491-7229

DATE: APRIL 8, 2021
 SCALE: 1"=10'
 SHEET 5 OF 5 THIS PHASE

City of Williamsburg & County of James City
 Circuit Court: This PLAT was recorded on
 April 14, 2021
 at 9:34 AM/PM, PB PG
 Document # 210007709
 MONA A. FOLEY, CLERK
 Clerk

