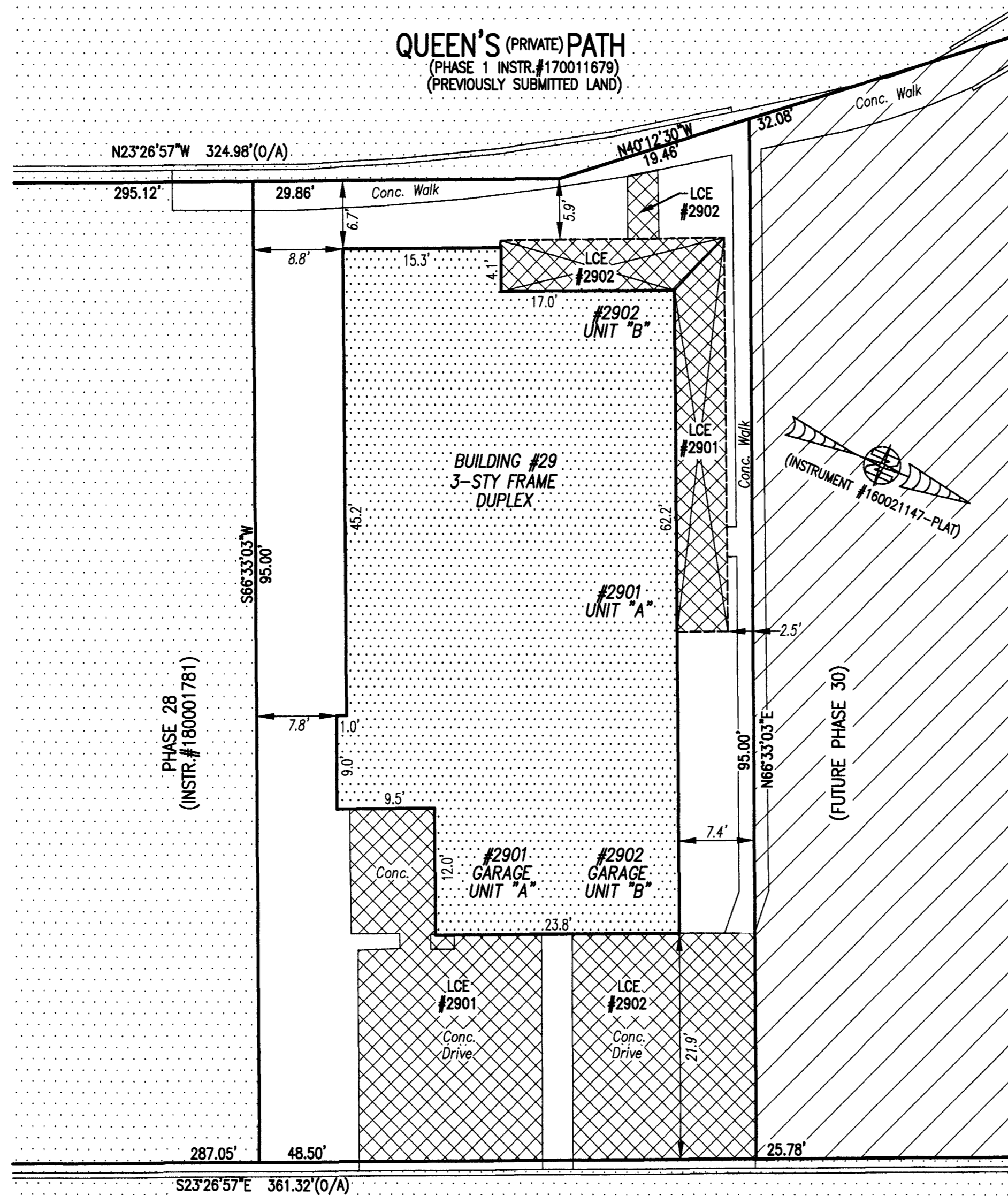
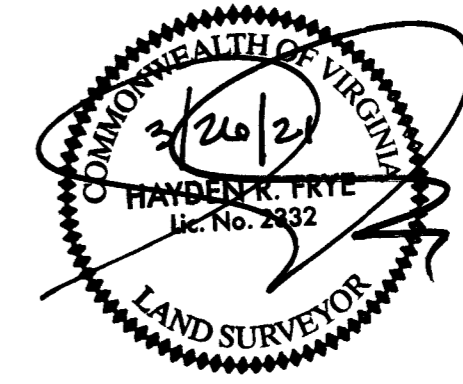


I HEREBY CERTIFY THAT THIS PLAT IS ACCURATE AND THAT IT COMPLIES WITH THE PROVISIONS OF THE CODE OF VIRGINIA OF 1950 AS AMENDED, § 55.1-1920A & B AND I FURTHER CERTIFY THAT ALL IMPROVEMENTS THEREOF DEPICTED HEREON, PURSUANT TO THE CODE OF VIRGINIA § 55.1-1920A, ARE SUBSTANTIALLY COMPLETE.



**QUEEN'S (PRIVATE) PATH**  
(PHASE 1 INSTR.#170011679)  
(PREVIOUSLY SUBMITTED LAND)

**ALLEGRO (PRIVATE) WAY**  
(FORMERLY ALLEY B)  
(PHASE 1 INSTR.#170011679)  
(PREVIOUSLY SUBMITTED LAND)

- INDICATES PREVIOUSLY SUBMITTED LAND
- INDICATES BUILDING AREA (SEE PLANS FOR UNIT DIMENSIONS)
- INDICATES LIMITED COMMON ELEMENT (LCE) ASSIGNED TO A UNIT # UNIT ASSIGNED
- INDICATES COMMON ELEMENT (EXCLUDING AREAS OUTSIDE SUBMITTED LAND)
- INDICATES ADDITIONAL LAND

LCE #1000  
(EXAMPLE UNIT #)

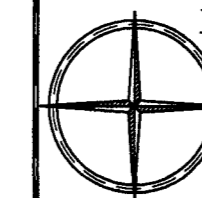
City of Williamsburg & County of James City  
Circuit Court: This PLAT was recorded on  
April 5, 2021  
at 1042 AM/PM, PB PG  
Document # 210006561  
MONA A. FOLEY, CLERK  
Mona A. Foley, Clerk

5 Large/Small Plat(s) Recorded  
herewith as # 210006561

THIS SHEET: BUILDING DETAIL

**PHASE 29**  
**CONDOMINIUM PLAT AND PLAN**  
OF  
**THE PROMENADE**  
AT  
**JOHN TYLER**  
A CONDOMINIUM  
JAMES CITY COUNTY, VIRGINIA

Jo# 160921



Hayden Frye and Associates, Inc.

**Land Surveyors**

333 KELLAM ROAD, SUITE 200  
VIRGINIA BEACH, VA., 23462  
PH: (757) 491-7228 FX: (757) 491-7229

DATE: MARCH 18, 2021

SCALE: 1"=10'

SHEET 3 OF 5 THIS PHASE

