

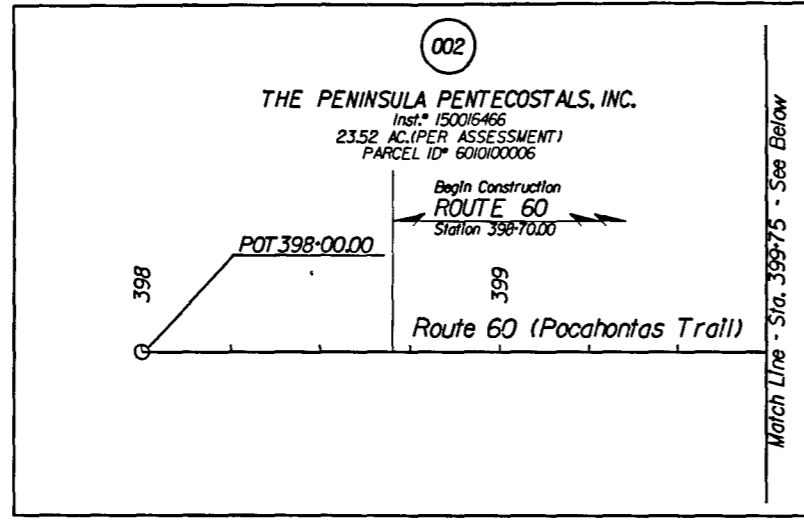
Dewberry

PROJECT MANAGER Mr. Wali Zaman, PE - VDOT Hampton Roads District - (757) 956-3272
SURVEYED BY, DATE Dewberry Engineers Inc., 03/2020
DESIGNED BY, Dewberry Engineers Inc. - (804) 205-3340
SUBSURFACE UTILITY BY, Accumark, 04/2020

Matthew C. Thomas 2020.10.29 11:37:17-04'00"	Matthew C. Thomas 2020.10.29 11:37:30-04'00"
Dewberry Engineers Inc. Glen Allen, Virginia HYDRAULIC ENGINEER	Dewberry Engineers Inc. Glen Allen, Virginia ROADWAY ENGINEER

REVISED	STATE	ROUTE	PROJECT	SHEET NO.
	VA.	60	0060-047-627 R-201 C-501	10

DESIGN FEATURES RELATING TO CONSTRUCTION OR TO REGULATION AND CONTROL OF TRAFFIC MAY BE SUBJECT TO CHANGE AS DEEMED NECESSARY BY THE DEPARTMENT

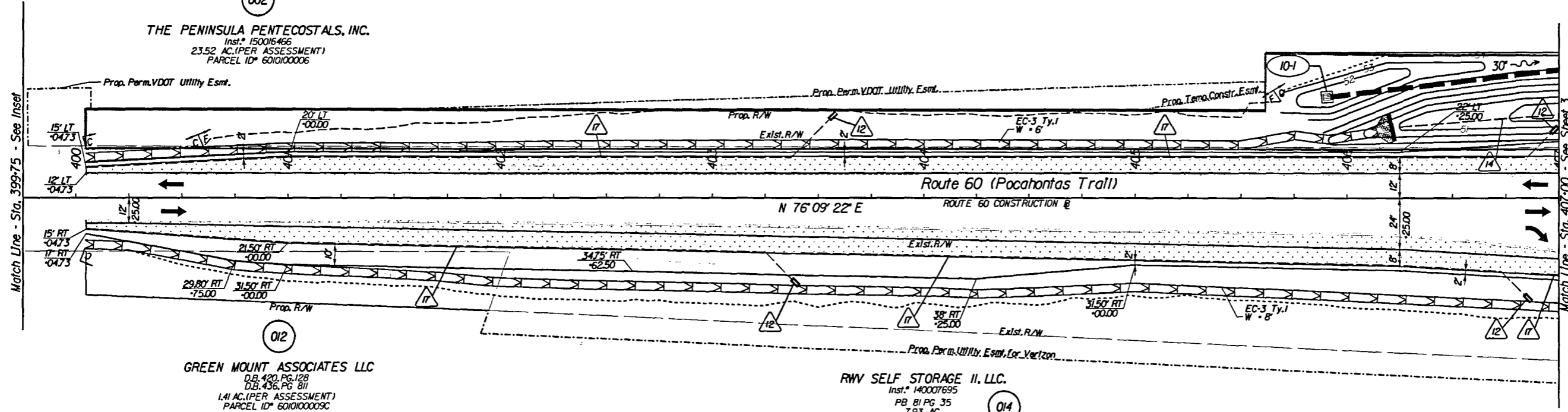


002
THE PENINSULA PENTECOSTALS, INC.
Inst.* 150016466
10.49 AC.(PER ASSESSMENT)
PARCEL ID* 601010007

002
THE PENINSULA PENTECOSTALS, INC.
Inst.* 150016466
23.52 AC.(PER ASSESSMENT)
PARCEL ID* 601010006

012
GREEN MOUNT ASSOCIATES LLC
D.B.420, PG.128
D.B.436, PG.811
1.41 AC.(PER ASSESSMENT)
PARCEL ID* 601010009C

014
RWV SELF STORAGE II, LLC.
Inst.* 14007695
PB.81 PG.35
7.93 AC.
PARCEL ID* 601010001A



- Key Legend**
- 1 6" Curb, S/d, CG-2 Req'd.
 - 2 4" Curb, S/d, CG-3 Req'd.
 - 3 6" Curb and Gutter, S/d, CG-6 Req'd.
 - 4 4" Curb and Gutter, S/d, CG-7 Req'd.
 - 5 Conc. Raised Median, S/d, MS-1 Req'd.
 - 6 Conc. Raised Median, S/d, MS-1A Req'd.
 - 7 Grass Raised Median, S/d, MS-2 Req'd.
 - 8 Entrance Gutter, S/d, CG-9B Req'd.
 - 9 Entrance Gutter, S/d, CG-9D Req'd.
 - 10 Entrance, S/d, CG-11 Req'd.
 - 11 Curb Ramp, S/d, CG-12 Req'd.

- 12 Underdrain Endwall, S/d, EW-12 Req'd.
- 13 Abandon Pipe, S/d, PP-1 Req'd.
- 14 Groundwater Underdrain, S/d, UD-1 Req'd.
- 15 Median Underdrain, S/d, UD-2 Req'd.
- 16 Sidewalk Underdrain, S/d, UD-3 Req'd.
- 17 Pavement Underdrain, S/d, UD-4 Req'd.
- 18 Crossdrain, S/d, CD-1 Req'd.
- 19 Crossdrain, S/d, CD-2 Req'd.
- 20 Handrail, S/d, HIR-1 Type II Req'd.
- 21 Barbed Wire Fence, S/d, FE-B Req'd.
- 22 Chain Link Fence, S/d, FE-CL Req'd.
- 23 Guardrail, S/d, GR-MGSI Req'd.
- 24 Guardrail, S/d, GR-MGSA Req'd.
- 25 Guardrail Terminal, S/d, GR-MGS2 Req'd.
- 26 Guardrail, S/d, GR-10, Type I Req'd.
- 27 Guardrail, S/d, GR-10, Type II Req'd.
- 28 Guardrail, S/d, GR-10, Type III Req'd.
- 29 Trailing End Terminal, S/d, GR-MGS3 Req'd.
- 30 Fixed Object Air, S/d, GR-FOA-5 Req'd.
- 31 Fixed Object Air, S/d, GR-FOA-2 Req'd.
- 32 Guardrail, S/d, GR-MGS4
- 33 Bridge Pier Protection, S/d, BPPS-1
- 34 Remove Exist. Guardrail
- 35 Remove Exist. Fence
- 36 Remove Exist. Structure
- 37 Remove Exist. Pipe
- 38 Abandon and Plug Exist. Pipe
- 39 Adj. Exist. Structure
- 40 Clean Out Exist. Structure
- 41 Clean Out Exist. Pipe
- 42 Full Depth Sawcut
- 43 6" Curb and Dry Gutter, Mod, CG-6 Req'd.
- 44 Conc. Median Barrier, S/d, MB-7F Req'd.

- Denotes Full Depth Pavement
- Denotes Guardrail Bumpout Pavement Section
- Denotes Pavement Demolition
- Denotes Mill & Variable Depth Overlay
- Denotes Milling and Overlay
- Denotes Construction Limits in Cuts
- Denotes Construction Limits in Fills

REFERENCES
(PROFILES, DETAIL & DRAINAGE DESCRIPTION SHEETS, ETC.)

Alignment Data	1G
ESC Phase 1	2D series
ESC Phase 2	2E series
ESC Phase 3	2F series
Pocahontas Trail Profile	10A
Right-of-Way Plan	10RW
Drainage Descriptions	16
Storm Sewer Profiles	17

SCALE	PROJECT	SHEET NO.
0 25' 50'	0060-047-627	10