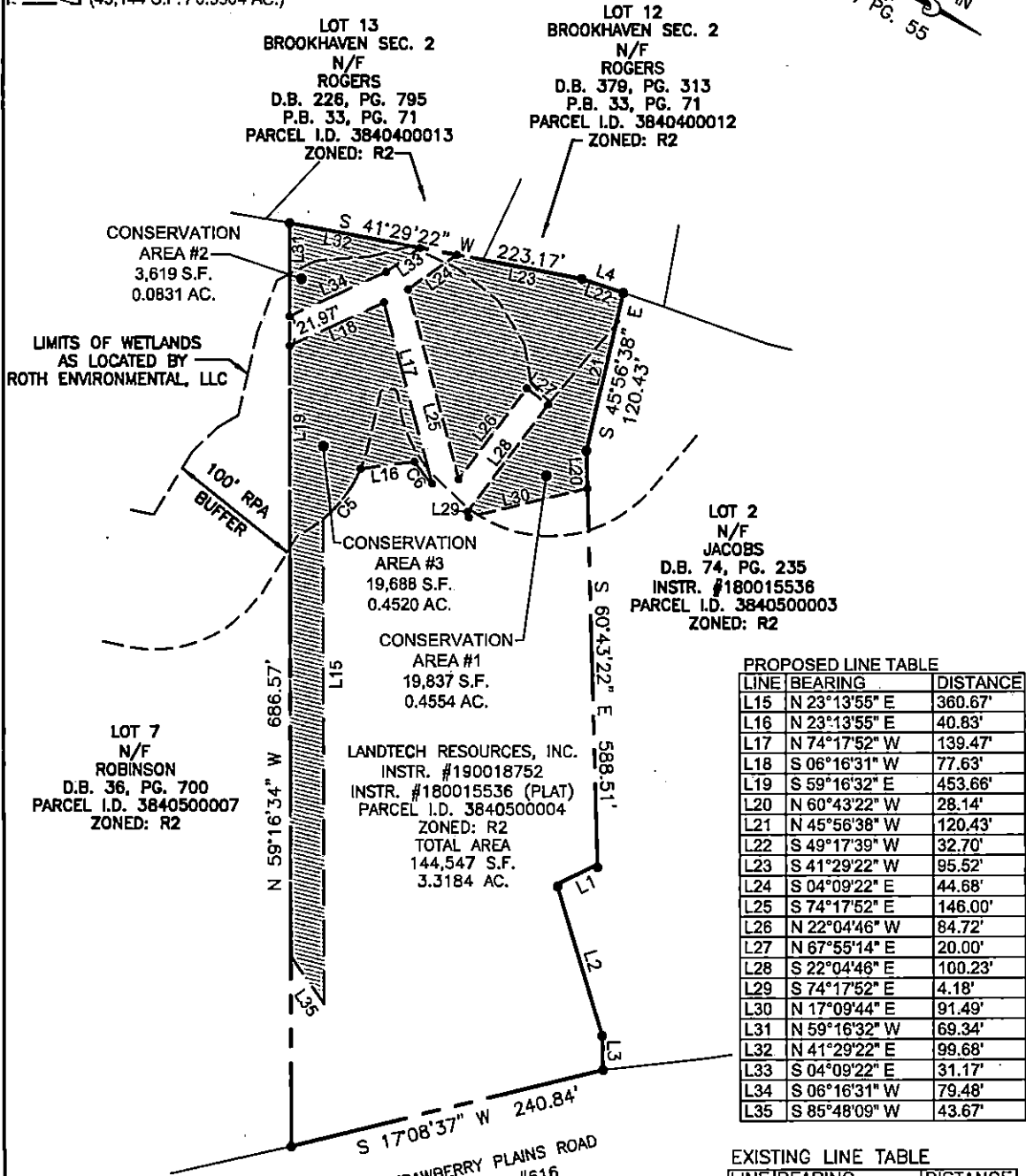


CURVE	RADIUS	ARC LENGTH	CHORD LENGTH	CHORD BEARING	DELTA ANGLE
C5	100.00'	47.04'	46.60'	N 22°19'35" W	26°56'59"
C6	105.00'	21.11'	21.08'	N 81°31'41" E	11°31'17"

CONSERVATION EASEMENT  
HEREBY DEDICATED TO JAMES  
CITY COUNTY  
(43,144 S.F. / 0.9904 AC.)

RECORD  
MERIDIAN  
P.B. 65, PG. 55



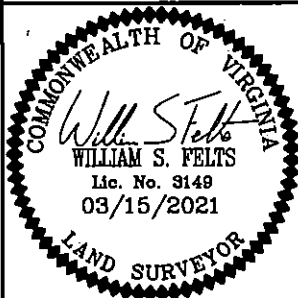
PROPOSED LINE TABLE

LINE	BEARING	DISTANCE
L15	N 23°13'55" E	360.67'
L16	N 23°13'55" E	40.83'
L17	N 74°17'52" W	139.47'
L18	S 06°16'31" W	77.63'
L19	S 59°16'32" E	453.66'
L20	N 60°43'22" W	28.14'
L21	N 45°56'38" W	120.43'
L22	S 49°17'39" W	32.70'
L23	S 41°29'22" W	95.52'
L24	S 04°09'22" E	44.68'
L25	S 74°17'52" E	146.00'
L26	N 22°04'46" W	84.72'
L27	N 67°55'14" E	20.00'
L28	S 22°04'46" E	100.23'
L29	S 74°17'52" E	4.18'
L30	N 17°09'44" E	91.49'
L31	N 59°16'32" W	69.34'
L32	N 41°29'22" E	99.68'
L33	S 04°09'22" E	31.17'
L34	S 06°16'31" W	79.48'
L35	S 85°48'09" W	43.67'

EXISTING LINE TABLE

LINE	BEARING	DISTANCE
L1	S 05°08'17" W	33.79'
L2	S 75°56'30" E	117.47'
L3	S 60°43'22" E	25.56'
L4	S 49°17'39" W	32.70'

ADDRESS:  
3877 STRAWBERRY PLAINS ROAD  
JAMES CITY COUNTY, VIRGINIA



REFERENCES:  
INSTR. #180015536  
  
DATE: 03/15/21  
SCALE: 1"=100'  
JOB# 17-295  
CAD File  
17-295-Cons-Ermt.dwg

EXHIBIT SHOWING CONSERVATION EASEMENT  
DEDICATED TO JAMES CITY COUNTY  
FROM  
**LANDTECH RESOURCES, INC.**  
JAMES CITY COUNTY VIRGINIA  
  
**LandTech Resources, Inc.**  
ENGINEERING & SURVEYING CONSULTANTS  
205 Bulifants Blvd., Suite E, Williamsburg, Virginia 23188  
Telephone: 757-565-1677 Fax: 757-565-0782  
Web: landtechresources.com