

210005070

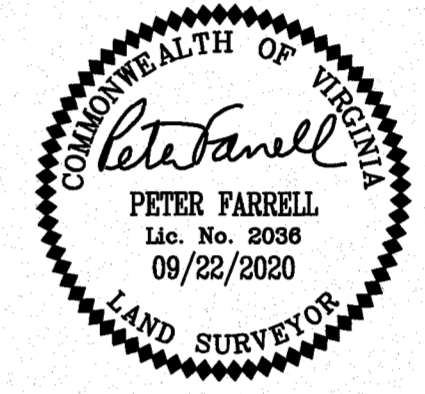
MATCH SHEET 6

SUBDIVISION OF
STONEHOUSE TRACT 3
PARCEL "B" SECTION 3
LOTS 83 THROUGH 152

STONEHOUSE DISTRICT JAMES CITY COUNTY VIRGINIA
DATE: 09/22/2020 JOB # 17-378

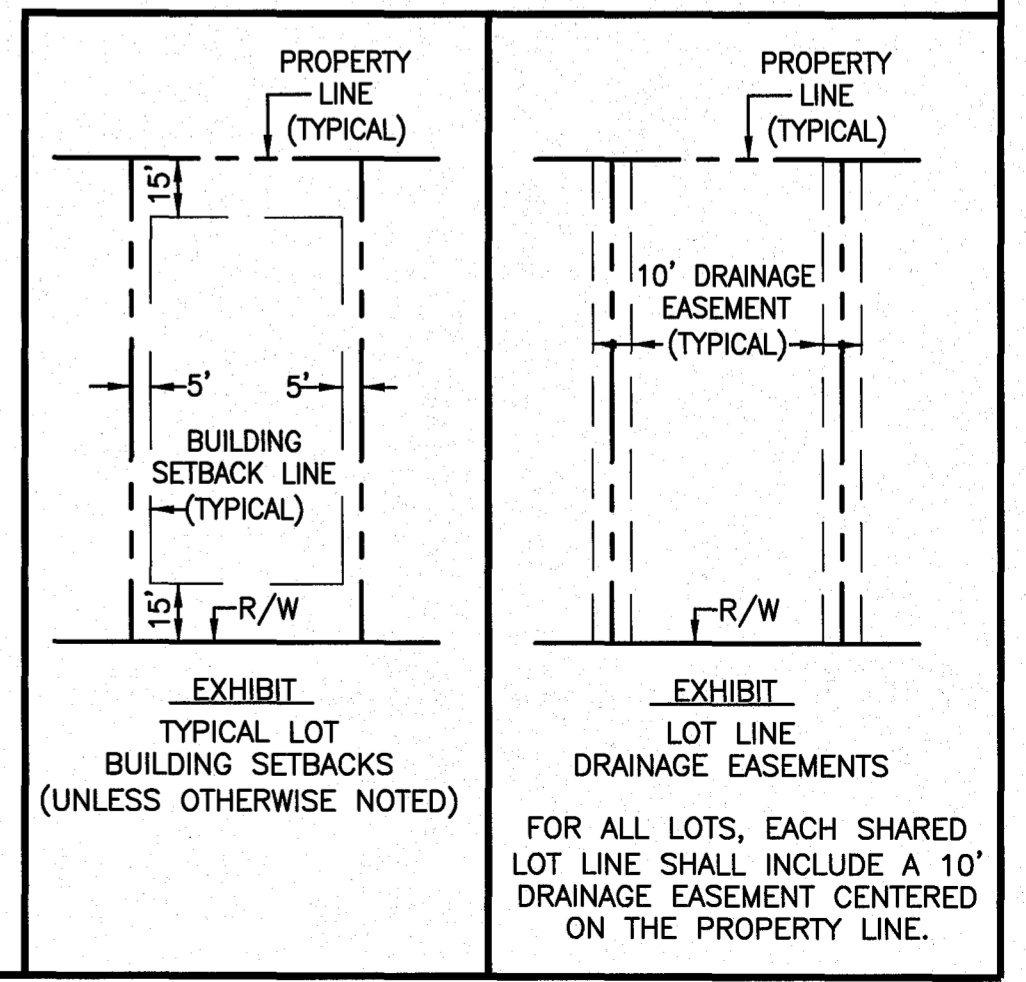
LandTech Resources, Inc.
Engineering & Surveying Consultants
205 Bullfants Blvd, Suite E, Williamsburg, Virginia 23188
Phone: (757) 565-1677 Fax: (757) 565-0782
web: landtechresources.com

SHEET 5 OF 7
JCC-S-20-0032



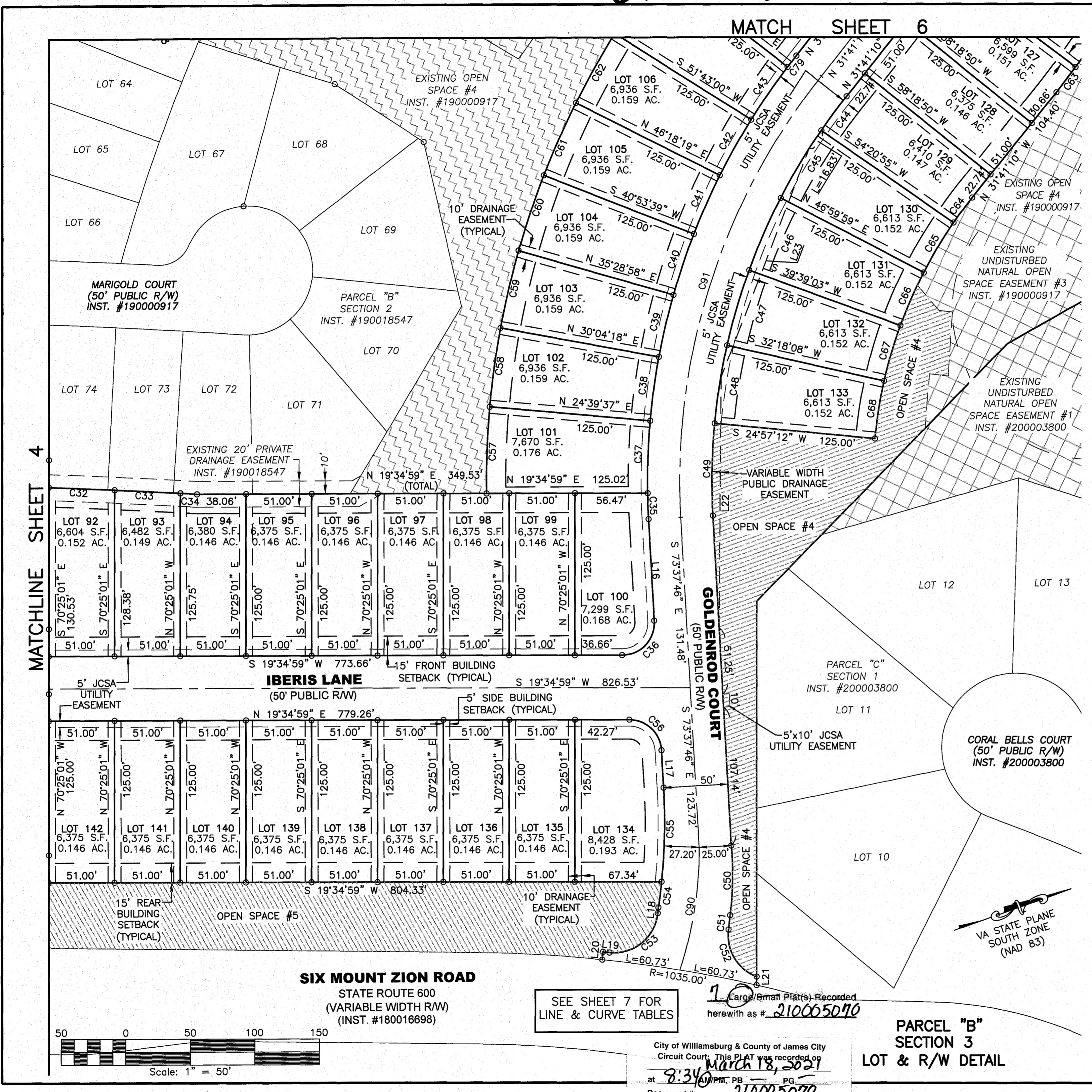
- OPEN SPACE #5
42,354 S.F. 0.972 AC. (SHEETS 4 & 5)
- OPEN SPACE #4
2,852 S.F. 0.065 AC. (SHEET 6)
23,339 S.F. 0.536 AC. (SHEET 5)
- EXISTING UNDISTURBED NATURAL OPEN SPACE EASEMENT
- EXISTING OPEN SPACE

NOTE:
THIS PLAT CREATES 0.601 ACRES OF OPEN SPACE #4 AND 0.972 ACRES OF OPEN SPACE #5. ADDITIONAL AREAS OF OPEN SPACE #5 FALL WITHIN AREA OF PROPOSED RIGHT-OF-WAY-ADJUSTMENT FOR SIX MOUNT ZION ROAD.

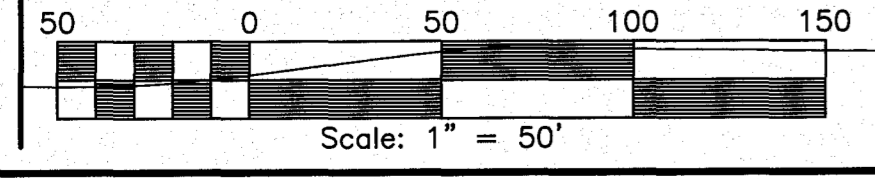


**PARCEL "B" SECTION 3
LOT & R/W DETAIL**

1 (Large/Small Plat(s) Recorded herewith as # **210005070**
City of Williamsburg & County of James City Circuit Court: This PLAT was recorded on **March 18, 2021** at **8:34** AM, PG. Document # **210005070**
MONA A. FOLEY, CLERK



MATCHLINE SHEET 4



SEE SHEET 7 FOR LINE & CURVE TABLES

SIX MOUNT ZION ROAD
STATE ROUTE 600
(VARIABLE WIDTH R/W)
(INST. #180016698)

MARIGOLD COURT
(50' PUBLIC R/W)
INST. #190000917

PARCEL "B" SECTION 2
INST. #190018547

PARCEL "C" SECTION 1
INST. #200003800

CORAL BELLS COURT
(50' PUBLIC R/W)
INST. #200003800

