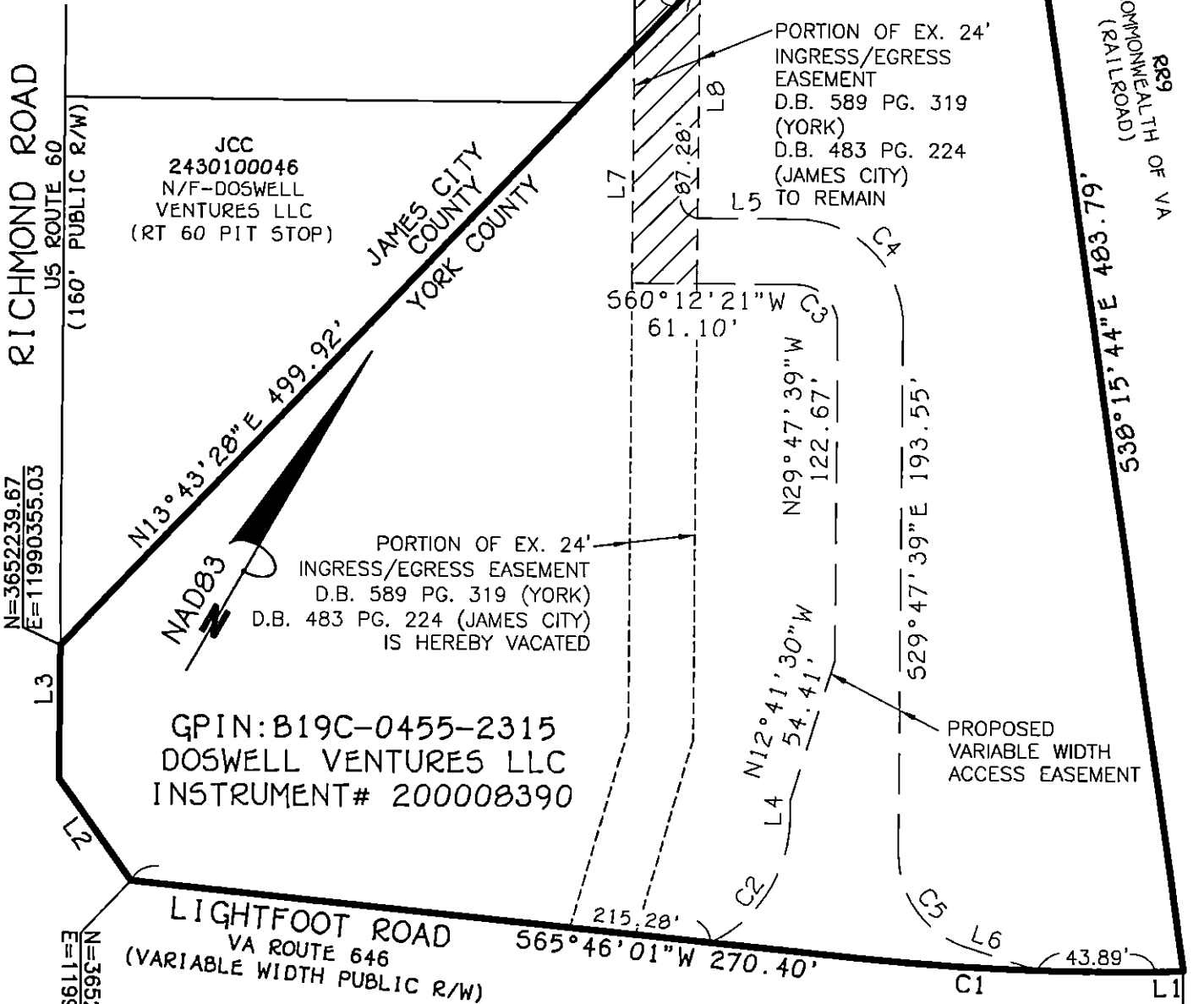
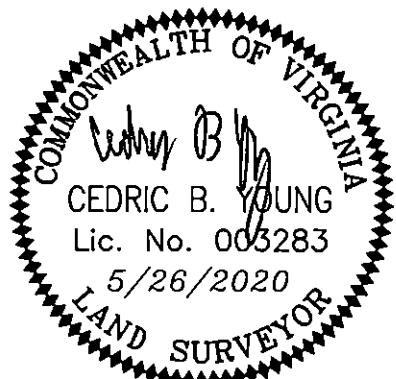


Line Table		
Line #	Length	Direction
L1	10.15'	S58°58'55"W
L2	45.67'	N65°45'04"W
L3	48.89'	N29°47'39"W
L4	6.19'	N29°47'39"W
L5	37.10'	N60°12'21"E
L6	27.63'	N77°56'31"E
L7	86.00'	N29°47'39"W
L8	111.28'	S29°47'39"E



Curve Table						
Curve #	Length	Radius	Delta	Tangent	Chord	Chord Bearing
C1	109.53'	924.93'	006°47'06"	54.83'	109.47'	N62°22'28"E
C2	57.38'	51.00'	064°27'58"	32.16'	54.40'	N02°26'20"E
C3	23.56'	15.00'	090°00'00"	15.00'	21.21'	N74°47'39"W
C4	61.26'	39.00'	090°00'00"	39.00'	55.15'	S74°47'39"E
C5	45.40'	36.00'	072°15'50"	26.28'	42.45'	S65°55'34"E

PLAT SHOWING  
 PROPOSED VARIABLE WIDTH  
 ACCESS EASEMENT  
 ACROSS GPIN:  
 B19C-0455-2315  
 LOCATED IN THE  
 BRUTON DISTRICT OF  
 YORK COUNTY, VIRGINIA  
 SCALE: 1"=60'  
 DATE: MAY 26, 2020



bay

THE BAY COMPANIES

CIVIL ENGINEERS

8500 BELL CREEK ROAD MECHANICSVILLE, VA 23116

PH:(804)569-7060 FILED:16015\_access easement.dwg