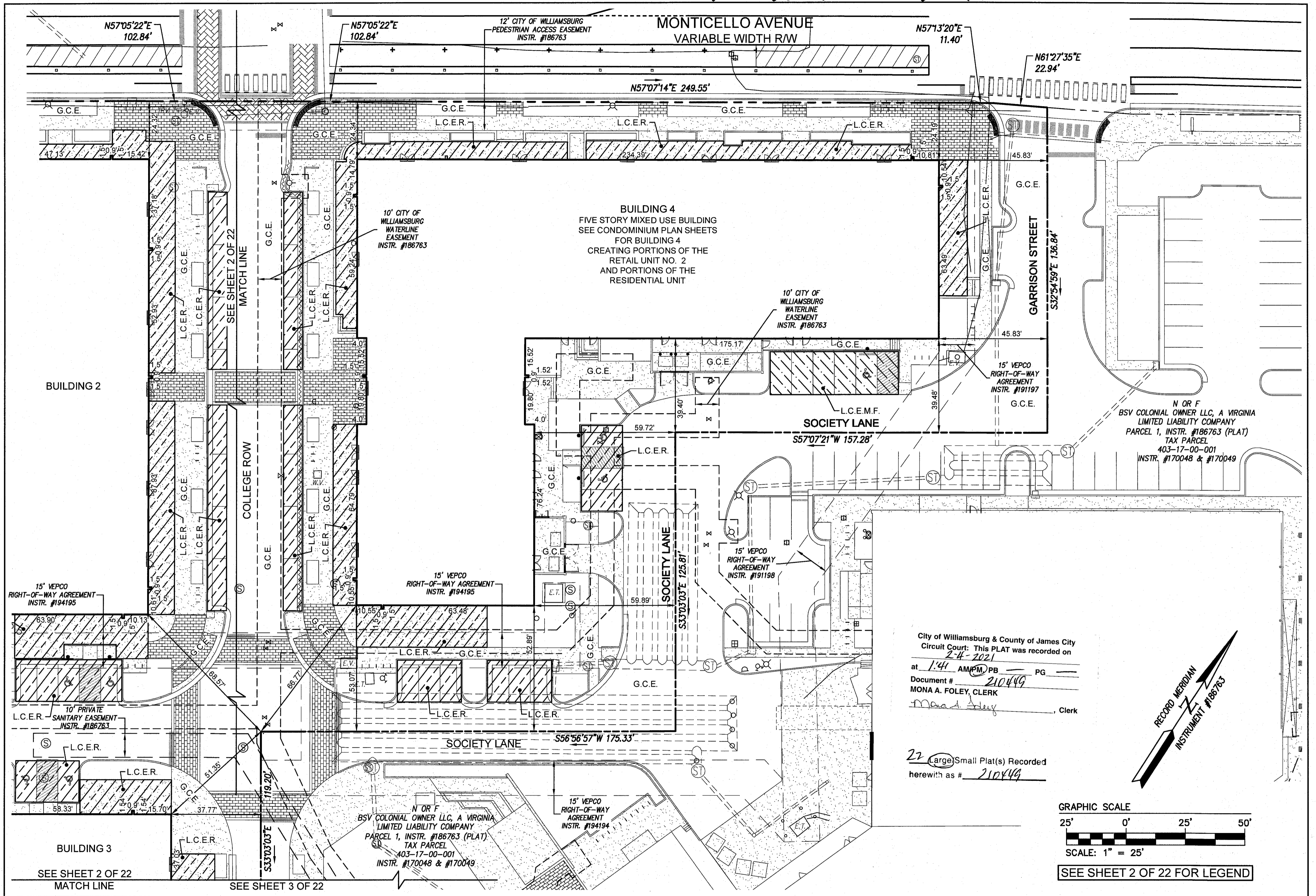


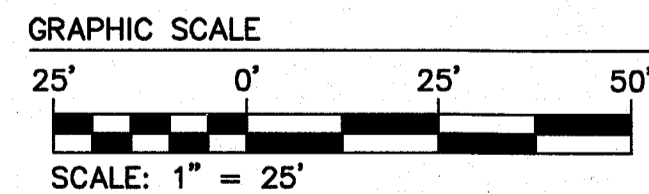
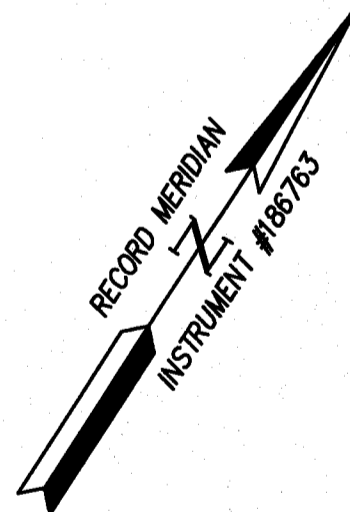
210002257

210449



City of Williamsburg & County of James City
 Circuit Court: This PLAT was recorded on
 2-4-2021
 at 1:41 AM/PM PB PG
 Document # 210449
 MONA A. FOLEY, CLERK
Mona A. Foley, Clerk

22 Large/Small Plat(s) Recorded
 herewith as # 210449



SEE SHEET 2 OF 22 FOR LEGEND

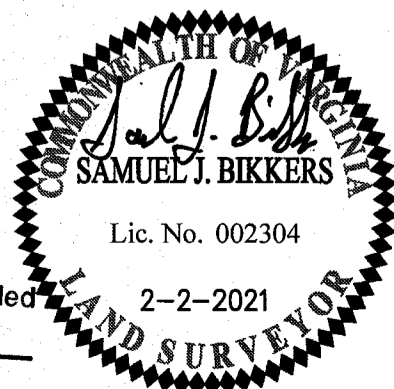
SURVEYOR'S CERTIFICATE

I, SAMUEL J. BIKKERS, A DULY LICENSED LAND SURVEYOR IN THE COMMONWEALTH OF VIRGINIA, DO HEREBY CERTIFY THAT THIS PLAT IS ACCURATE AND COMPLIES WITH SECTION 55.1-1920(A) OF THE VIRGINIA CONDOMINIUM ACT AS AMENDED, AND THAT ALL UNITS OR PORTIONS OF SUCH UNITS SHOWN HEREON ARE SUBSTANTIALLY COMPLETE.

Samuel J. Bickers
 SAMUEL J. BIKKERS, L.S. #002304

2-2-2021
 DATE

22 Large/Small Plat(s) Recorded
 herewith as # 210002257



City of Williamsburg & County of James City
 Circuit Court: This PLAT was recorded on
 2-4-2021
 at 1:55 AM/PM PB PG
 Document # 210002257
 MONA A. FOLEY, CLERK
Mona A. Foley, Clerk

EXHIBIT C-1
CONDOMINIUM PLAT SHOWING
SUBMITTED LAND, IMPROVEMENTS AND EXISTING EASEMENTS
MIDTOWN ROW COMMERCIAL CONDOMINIUM

CITY OF WILLIAMSBURG VIRGINIA

Project Contacts: SJB / CMA	
Project Number: W09042-12	
Scale: 1" = 25'	Date: 02-02-2021
Sheet Number	
4 OF 22	