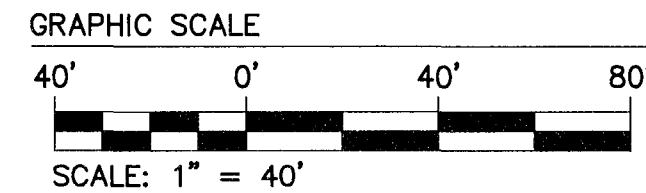
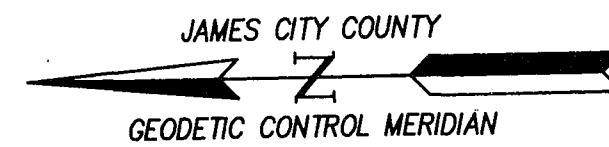
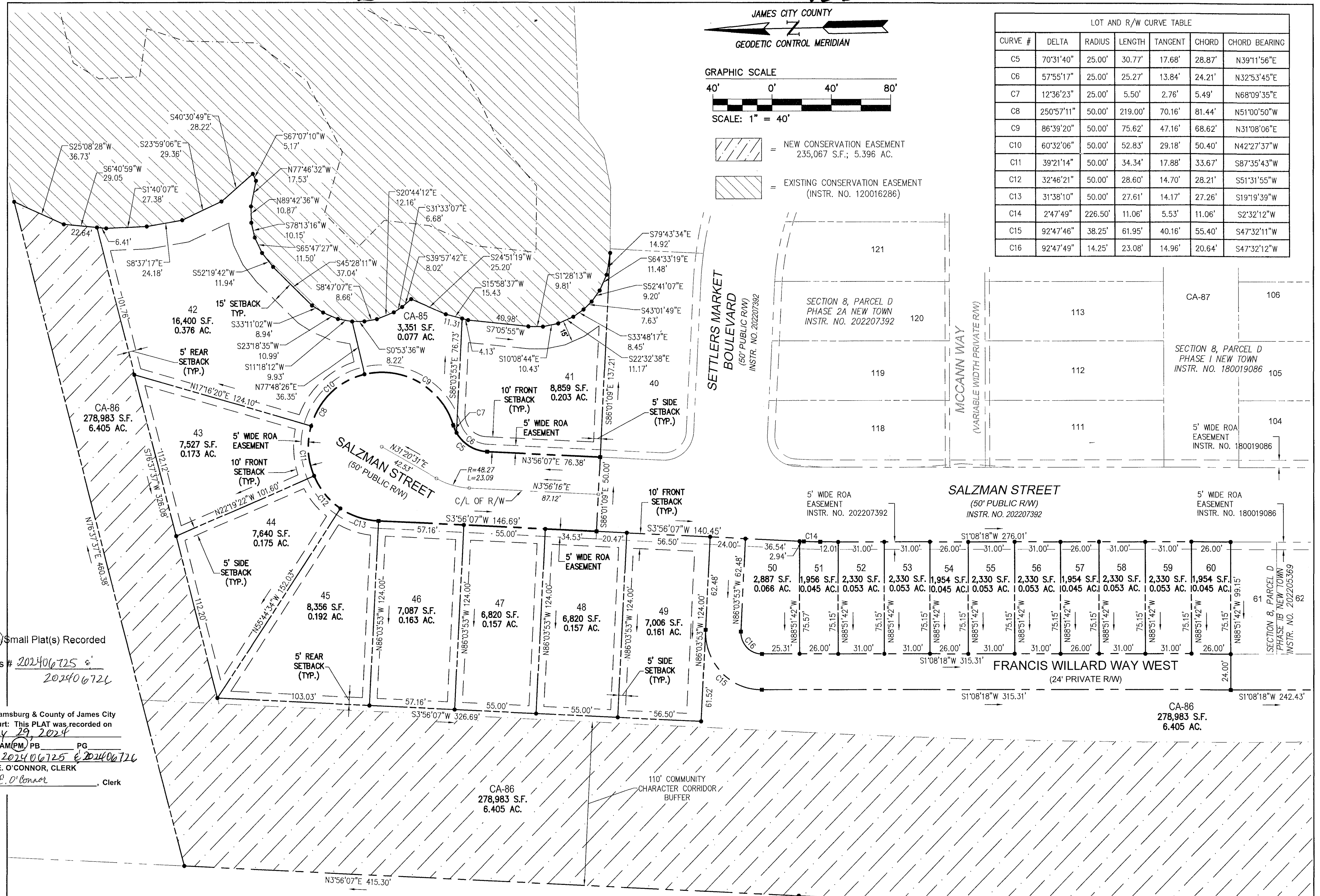


202406725

202406726

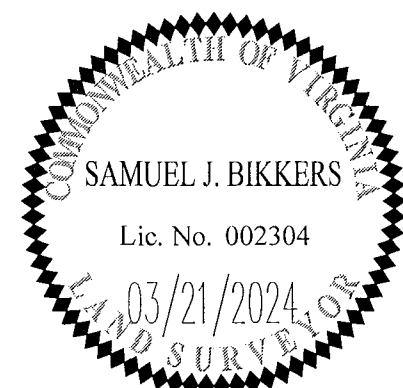


LOT AND R/W CURVE TABLE						
CURVE #	DELTA	RADIUS	LENGTH	TANGENT	CHORD	CHORD BEARING
C5	70°31'40"	25.00'	30.77'	17.68'	28.87'	N39°11'56"E
C6	57°55'17"	25.00'	25.27'	13.84'	24.21'	N32°53'45"E
C7	12°36'23"	25.00'	5.50'	2.76'	5.49'	N68°09'35"E
C8	250°57'11"	50.00'	219.00'	70.16'	81.44'	N51°00'50"W
C9	86°39'20"	50.00'	75.62'	47.16'	68.62'	N31°08'06"E
C10	60°32'06"	50.00'	52.83'	29.18'	50.40'	N42°27'37"W
C11	39°21'14"	50.00'	34.34'	17.88'	33.67'	S87°35'43"W
C12	32°46'21"	50.00'	28.60'	14.70'	28.21'	S51°31'55"W
C13	31°38'10"	50.00'	27.61'	14.17'	27.26'	S19°19'39"W
C14	2°47'49"	226.50'	11.06'	5.53'	11.06'	S2°32'12"W
C15	92°47'46"	38.25'	61.95'	40.16'	55.40'	S47°32'11"W
C16	92°47'49"	14.25'	23.08'	14.96'	20.64'	S47°32'12"W



3 Large/Small Plat(s) Recorded
herewith as # 202406725 &
202406726

City of Williamsburg & County of James City
Circuit Court: This PLAT was recorded on
May 29, 2024
at 2:15 PM, AM/PM, PG
Document # 202406725 & 202406726
ELIZABETH E. O'CONNOR, CLERK
Elizabeth E. O'Connor, Clerk



AES
CONSULTING ENGINEERS
Hampton Roads | Central Virginia | Middle Peninsula
5248 Olde Towne Road, Suite 1
Williamsburg, Virginia 23188
Phone: (757) 253-0040
Fax: (757) 220-8994
www.aesva.com

JCC Case No. S-23-0045
PLAT OF SUBDIVISION
**SECTION 8, PARCEL D, PHASE 2B
NEW TOWN
LOTS 41-60**
OWNED BY ABVA DEVELOPMENT, LP
JAMESTOWN DISTRICT | JAMES CITY COUNTY | VIRGINIA

Project Contacts: SJB/JAG
Project Number: 6632-08-01
Scale: 1" = 40'
Date: 10/24/2023
Sheet Number
3 OF 3

Rev.	Date	Description	Revised By