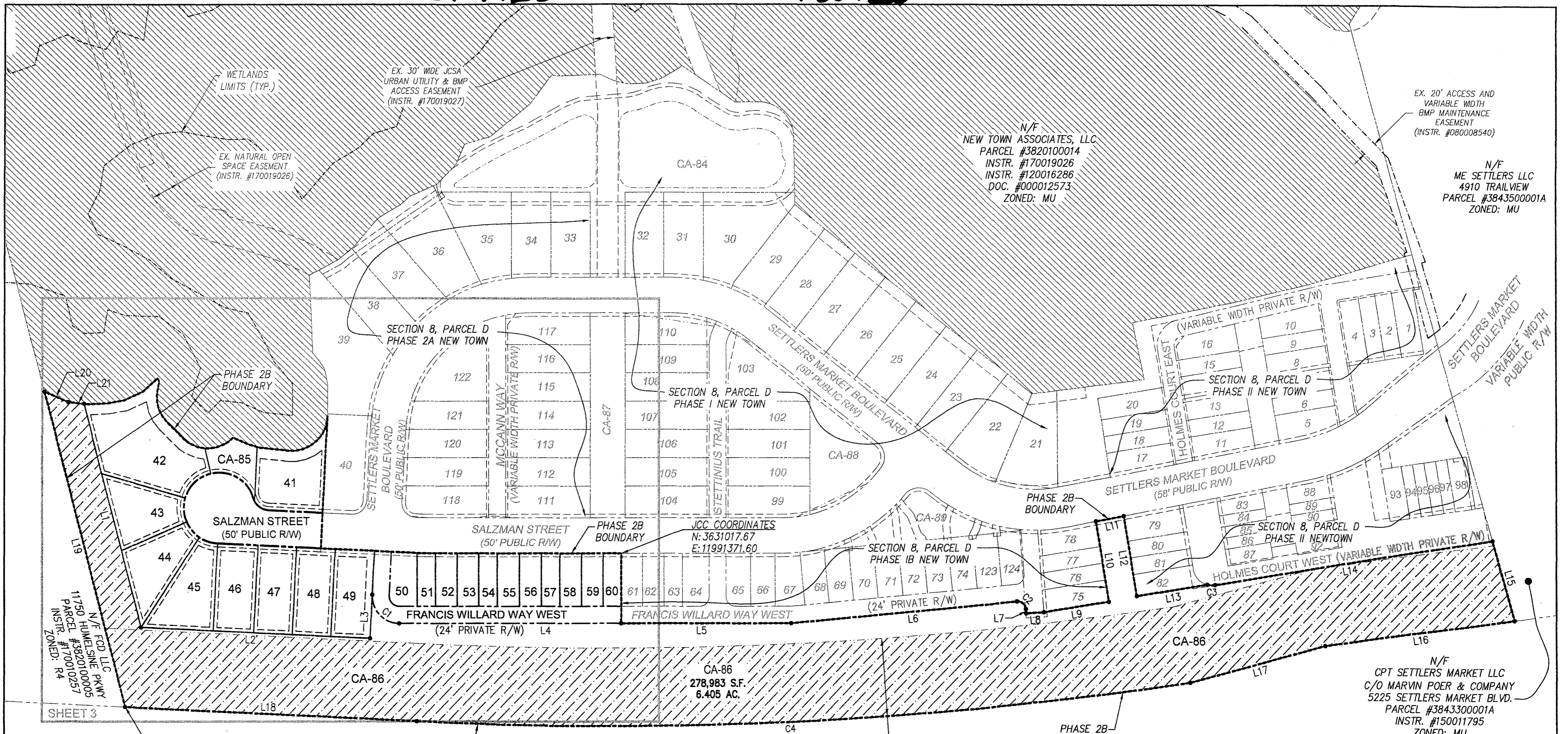


202406725

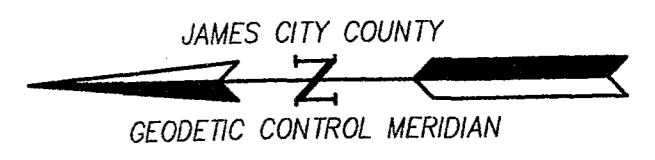
202406726



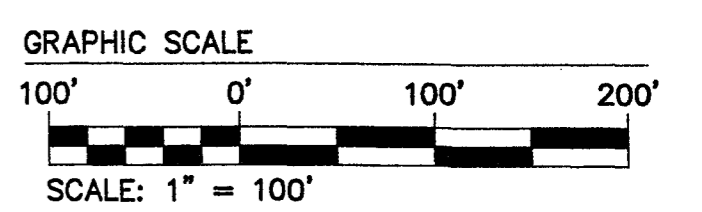
STATE ROUTE 199
 VARIABLE WIDTH PUBLIC R/W
 (LIMITED ACCESS)
 (PROJECT 0199-047-F03. RW-205-C503)
 (INSTRUMENT #010005794)

City of Williamsburg & County of James City
 Circuit Court: This PLAT was recorded on
 May 28, 2024
 at 10:22 AM (M) PB PG
 Document # 202406725 & 202406726
 ELIZABETH E. O'CONNOR, CLERK
 Elizabeth E. O'Connor, Clerk

= NEW CONSERVATION EASEMENT
 235,067 S.F.; 5.396 AC.
 = EXISTING CONSERVATION EASEMENT
 (INSTR. NO. 120016286)



3 Large/Small Plat(s) Recorded
 herewith as # 202406725 &
 202406726



CA-85 LINE TABLE

LINE	BEARING	LENGTH
L1	S76°37'37"W	112.12'
L2	S3°56'07"W	57.16'
L3	S86°03'53"E	61.52'
L4	S1°08'18"W	315.31'
L5	S1°08'18"W	242.43'
L6	S4°14'39"E	321.28'
L7	S86°52'52"W	6.14'
L8	S3°07'08"E	25.25'

CA-85 LINE TABLE

LINE	BEARING	LENGTH
L9	S8°00'18"E	93.08'
L10	N81°59'42"E	115.00'
L11	S9°51'20"E	40.50'
L12	S81°59'42"W	115.00'
L13	S8°00'18"E	100.99'
L14	S8°00'18"E	397.63'
L15	S75°50'02"W	117.37'
L16	N6°36'51"W	269.61'

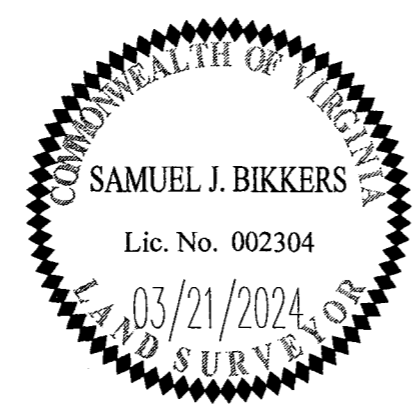
CA-85 LINE TABLE

LINE	BEARING	LENGTH
L17	N13°53'16"W	198.90'
L18	N3°56'07"E	415.30'
L19	N76°37'37"E	460.38'
L20	S25°08'28"W	36.73'
L21	S6°40'59"W	22.64'

CA-85 CURVE TABLE

CURVE #	DELTA	RADIUS	LENGTH	TANGENT	CHORD	CHORD BEARING
C1	92°47'55"	38.25'	61.95'	40.17'	55.40'	S47°32'12"W
C2	91°07'31"	11.75'	18.69'	11.98'	16.78'	S41°19'06"W
C3	24°04'01"	27.00'	11.34'	5.76'	11.26'	S4°01'43"W
C4	11°11'15"	5639.58'	1101.18'	552.34'	1099.43'	N1°39'31"W

Rev.	Date	Description	Revised By



AES
 CONSULTING ENGINEERS
 5248 Olde Towne Road, Suite 1
 Williamsburg, Virginia 23188
 Phone: (757) 253-0040
 Fax: (757) 220-8994
 www.aesva.com
 Hampton Roads | Central Virginia | Middle Peninsula

JCC Case No. S-23-0045
 PLAT OF SUBDIVISION
SECTION 8, PARCEL D, PHASE 2B
NEW TOWN
 LOTS 41-60
 OWNED BY ABVA DEVELOPMENT, LP
 JAMESTOWN DISTRICT | JAMES CITY COUNTY | VIRGINIA

Project Contacts: SJB/JAG
 Project Number: 6632-08-01
 Scale: Date: 10/24/2023
 Sheet Number
2 OF 3