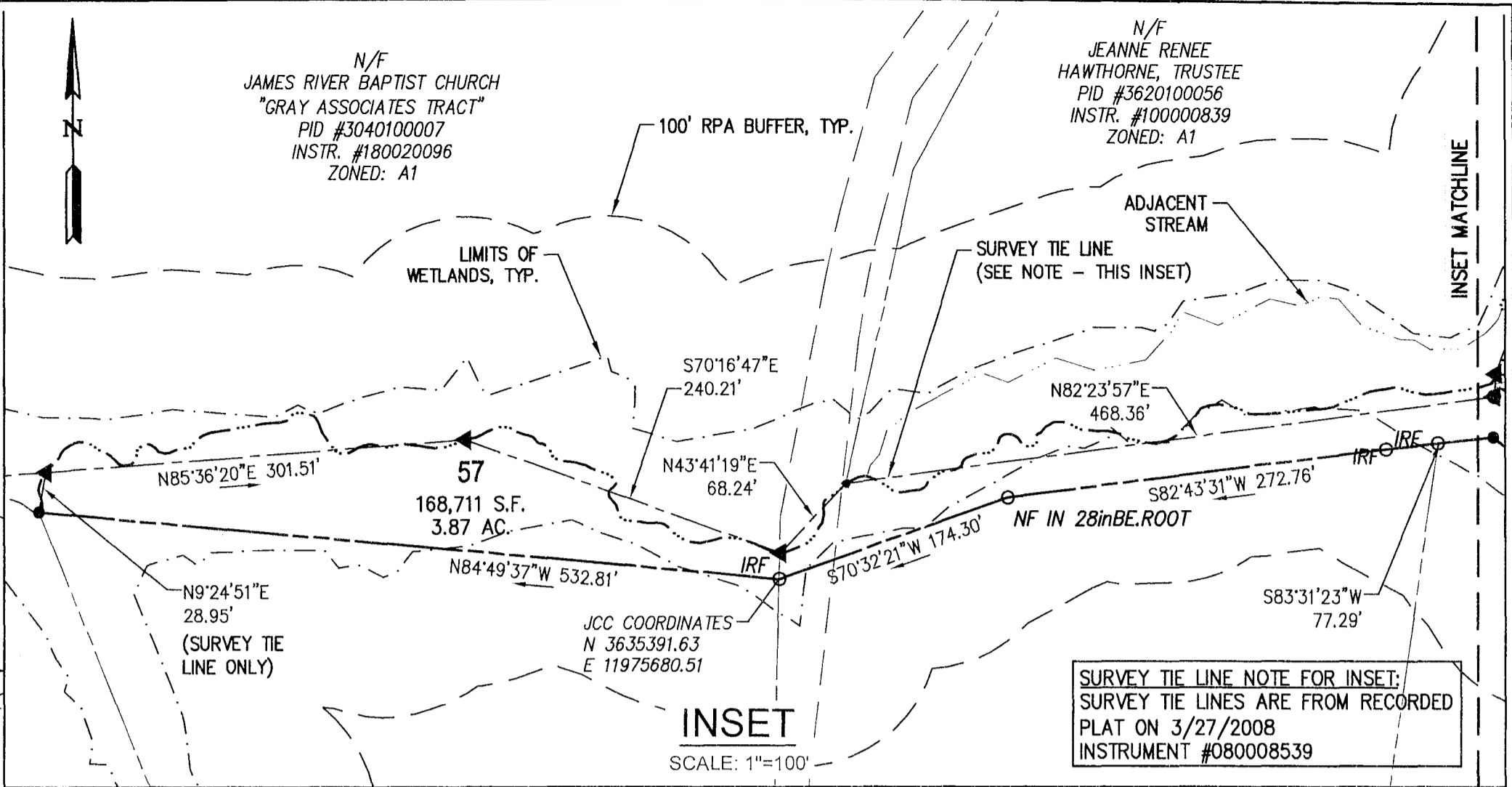
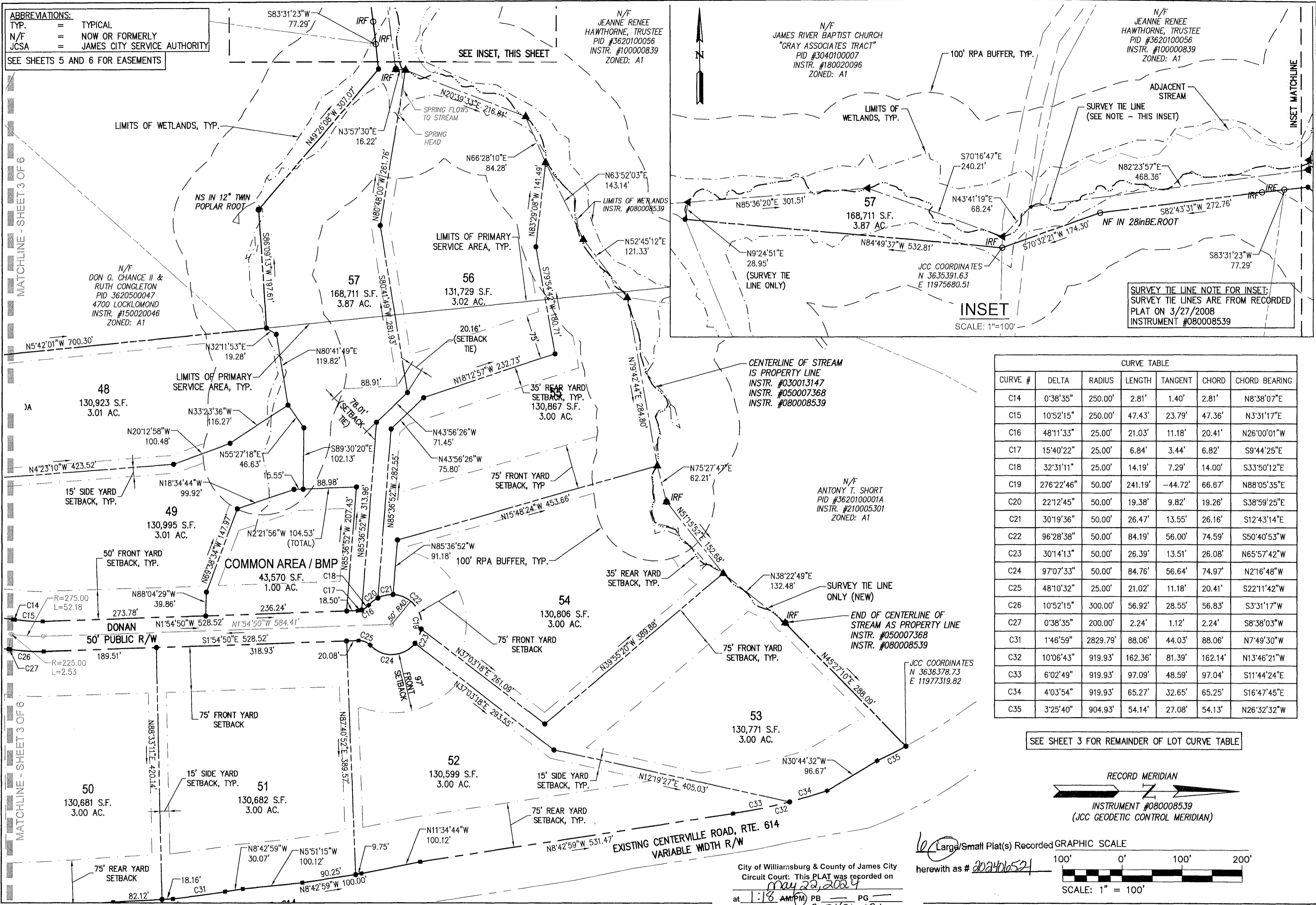


202406521

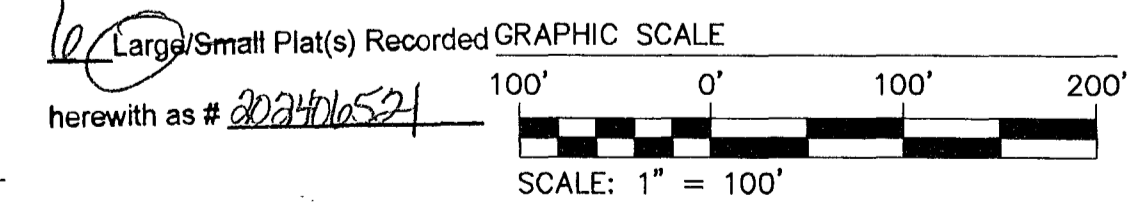
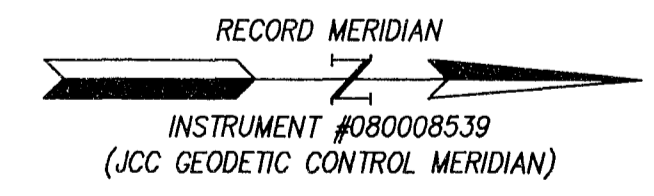
ABBREVIATIONS:
 TYP. = TYPICAL
 N/F = NOW OR FORMERLY
 JCSA = JAMES CITY SERVICE AUTHORITY
 SEE SHEETS 5 AND 6 FOR EASEMENTS



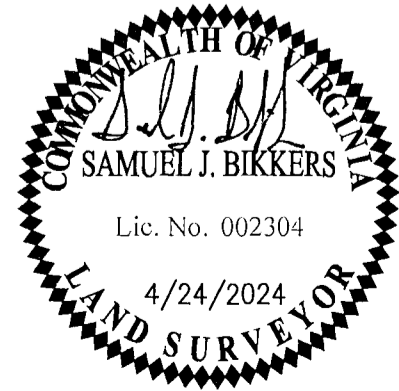
SURVEY TIE LINE NOTE FOR INSET:
 SURVEY TIE LINES ARE FROM RECORDED PLAT ON 3/27/2008 INSTRUMENT #080008539

CURVE TABLE						
CURVE #	DELTA	RADIUS	LENGTH	TANGENT	CHORD	CHORD BEARING
C14	0°38'35"	250.00'	2.81'	1.40'	2.81'	N8°38'07"E
C15	10°52'15"	250.00'	47.43'	23.79'	47.36'	N3°31'17"E
C16	48°11'33"	25.00'	21.03'	11.18'	20.41'	N26°00'01"W
C17	15°40'22"	25.00'	6.84'	3.44'	6.82'	S9°44'25"E
C18	32°31'11"	25.00'	14.19'	7.29'	14.00'	S33°50'12"E
C19	276°22'46"	50.00'	241.19'	-44.72'	66.67'	N88°05'35"E
C20	22°12'45"	50.00'	19.38'	9.82'	19.26'	S38°59'25"E
C21	30°19'36"	50.00'	26.47'	13.55'	26.16'	S12°43'14"E
C22	96°28'38"	50.00'	84.19'	56.00'	74.59'	S50°40'53"W
C23	30°14'13"	50.00'	26.39'	13.51'	26.08'	N65°57'42"W
C24	97°07'33"	50.00'	84.76'	56.64'	74.97'	N2°16'48"W
C25	48°10'32"	25.00'	21.02'	11.18'	20.41'	S22°11'42"W
C26	10°52'15"	300.00'	56.92'	28.55'	56.83'	S3°31'17"W
C27	0°38'35"	200.00'	2.24'	1.12'	2.24'	S8°38'03"W
C31	1°46'59"	2829.79'	88.06'	44.03'	88.06'	N7°49'30"W
C32	10°06'43"	919.93'	162.36'	81.39'	162.14'	N13°46'21"W
C33	6°02'49"	919.93'	97.09'	48.59'	97.04'	S11°44'24"E
C34	4°03'54"	919.93'	65.27'	32.65'	65.25'	S16°47'45"E
C35	3°25'40"	904.93'	54.14'	27.08'	54.13'	N26°32'32"W

SEE SHEET 3 FOR REMAINDER OF LOT CURVE TABLE



Rev.	Date	Description	Revised By
3	12/13/2023	REVISED PER CLIENT COORDINATION	GVC
2	06/20/2023	REVISED PER CLIENT COORDINATION	SJB
1	9/07/2022	REVISED PER COUNTY COMMENTS DATED 9/02/2022	JFS



City of Williamsburg & County of James City Circuit Court: This PLAT was recorded on May 22, 2024 at 1:18 AM/PM PE PG Document # 202406521 ELIZABETH E. O'CONNOR, CLERK Elizabeth E. O'Connor, Clerk

JCC S-22-0020
 PLAT OF SUBDIVISION
PARKE AT WESTPORT FORD'S COLONY
 FOR
 PARKE AT WESTPORT, LLC
 POWHATAN DISTRICT COUNTY OF JAMES CITY VIRGINIA

Project Contacts:	GVC
Project Number:	W10145-03
Scale:	1"=100'
Date:	07/25/2022
Sheet Number	4 OF 6