

202406521

ABBREVIATIONS:
 TYP. = TYPICAL
 N/F = NOW OR FORMERLY
 JC SA = JAMES CITY SERVICE AUTHORITY

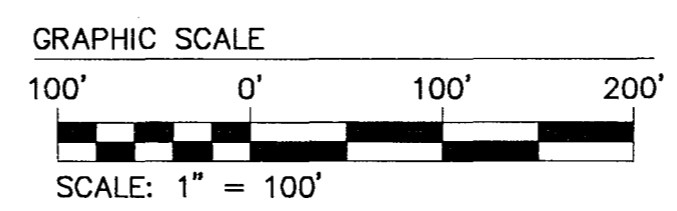
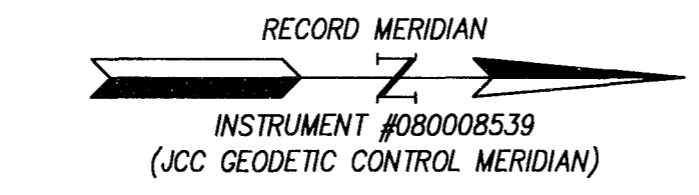
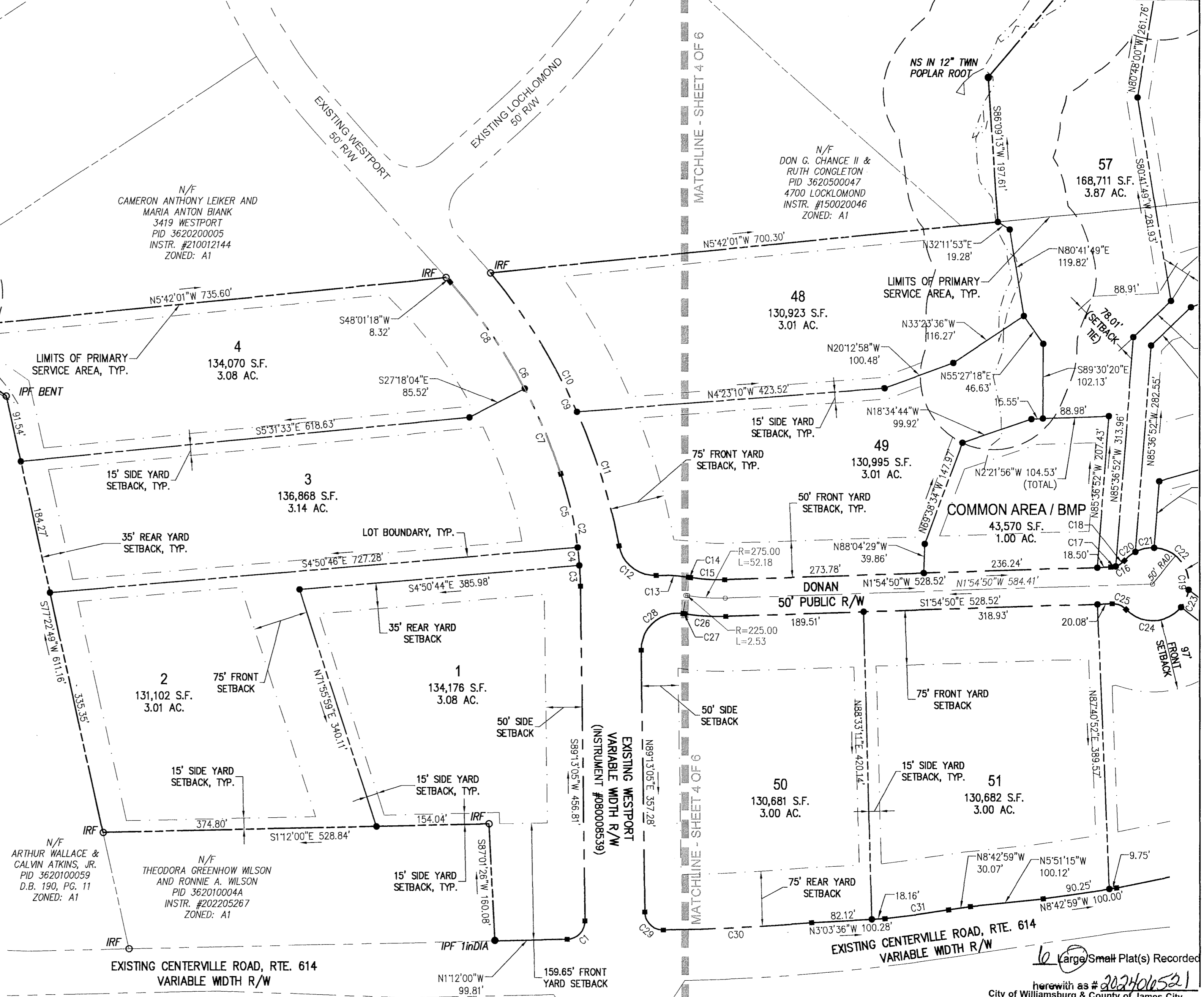
SURVEY TIE LINE NOTE:
 SURVEY TIE LINES ARE FROM RECORDED
 PLAT ON 3/27/2008
 INSTRUMENT #080008539 (EXCEPT AS NOTED)
 SEE SHEETS 5 AND 6 FOR EASEMENTS

N/F
 CONSTANCE M. BROWN,
 LIVING TRUST
 PID 3620100010
 D.B. 84, PG. 568 (PLAT)
 D.B. 754, PG. 438
 ZONED: A1

JCC COORDINATES
 N 36.33816.72
 E 119.76771.37

CURVE TABLE						
CURVE #	DELTA	RADIUS	LENGTH	TANGENT	CHORD	CHORD BEARING
C1	89°34'55"	25.00'	39.09'	24.82'	35.23'	N45°59'28"W
C2	18°23'16"	488.89'	156.90'	79.13'	156.23'	S80°01'27"W
C3	3°19'50"	488.89'	28.42'	14.21'	28.41'	N87°33'10"E
C4	2°55'51"	488.89'	25.01'	12.51'	25.01'	N84°25'19"E
C5	12°07'34"	488.89'	103.47'	51.93'	103.28'	N76°53'36"E
C6	23°48'00"	735.30'	305.43'	154.95'	303.24'	S59°55'29"W
C7	9°53'25"	735.30'	126.93'	63.62'	126.77'	S66°52'47"W
C8	13°54'35"	735.30'	178.51'	89.70'	178.07'	S54°58'47"W
C9	28°59'31"	825.00'	417.45'	213.30'	413.01'	N64°39'38"E
C10	15°37'03"	825.00'	224.88'	113.14'	224.18'	S57°58'25"W
C11	13°22'28"	825.00'	192.58'	96.73'	192.14'	S72°28'10"W
C12	80°56'25"	50.00'	70.63'	42.66'	64.91'	N38°41'12"E
C13	10°05'50"	250.00'	44.06'	22.09'	44.00'	N31°55'55"E
C28	99°05'45"	50.00'	86.48'	58.64'	76.09'	S41°14'03"E
C29	90°00'53"	25.00'	39.28'	25.01'	35.36'	N44°12'38"E
C30	4°07'05"	2842.00'	204.26'	102.18'	204.22'	N2°51'21"W

SEE SHEET 4 FOR REMAINDER OF LOT CURVE TABLE



6 Large/Small Plat(s) Recorded
 herewith as # 202406521
 City of Williamsburg & County of James City
 Circuit Court: This PLAT was recorded on
 May 22, 2024
 at 1:18 AM (M) PB PG
 Document # 202406521
 ELIZABETH E. O'CONNOR, CLERK
 Elizabeth E. O'Connor, Clerk

Rev.	Date	Description	Revised By
3	12/13/2023	REVISED PER CLIENT COORDINATION	GVC
2	06/20/2023	REVISED PER CLIENT COORDINATION	SJB
1	9/07/2022	REVISED PER COUNTY COMMENTS DATED 9/02/2022	JFS



AES
 CONSULTING ENGINEERS
 5248 Olde Towne Road, Suite 1
 Williamsburg, Virginia 23188
 Phone: (757) 253-0040
 Fax: (757) 220-8994
 www.aesva.com
 Hampton Roads | Central Virginia | Middle Peninsula

JCC S-22-0020
 PLAT OF SUBDIVISION
PARKE AT WESTPORT
FORD'S COLONY
 FOR
 PARKE AT WESTPORT, LLC
 POWHATAN DISTRICT COUNTY OF JAMES CITY VIRGINIA

Project Contacts:	GVC
Project Number:	W10145-03
Scale:	1"=100'
Date:	07/25/2022
Sheet Number	3 OF 6