

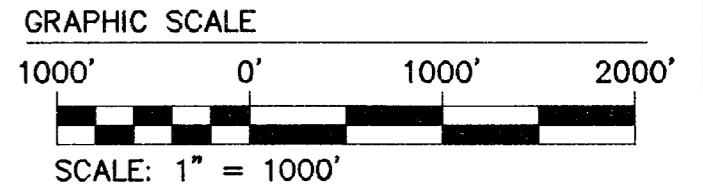
Large/Small Plat(s) Recorded
herewith as # 202406521

City of Williamsburg & County of James City
Circuit Court: This PLAT was recorded on
May 22, 2024
at 1:18 AM/PM PB PG
Document # 202406521
ELIZABETH E. O'CONNOR, CLERK
Elizabeth E. O'Connor, Clerk

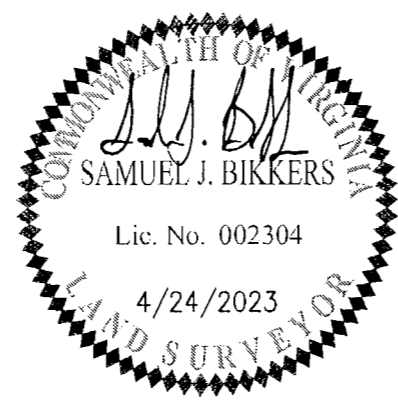


PARKE AT WESTPORT
FORD'S COLONY
(LOTS 1-4; 48-57)

VICINITY MAP



Rev.	Date	Description	Revised By
3	12/13/2023	REVISED PER CLIENT COORDINATION	GVC
2	06/20/2023	REVISED PER CLIENT COORDINATION	SJB
1	9/07/2022	REVISED PER COUNTY COMMENTS DATED 9/02/2022	JFS



AES
CONSULTING ENGINEERS
Hampton Roads | Central Virginia | Middle Peninsula
5248 Olde Towne Road, Suite 1
Williamsburg, Virginia 23188
Phone: (757) 253-0040
Fax: (757) 220-8994
www.aesva.com

JCC S-22-0020
PLAT OF SUBDIVISION
**PARKE AT WESTPORT
FORD'S COLONY**
FOR
PARKE AT WESTPORT, LLC
POWhatan District COUNTY OF JAMES CITY VIRGINIA

Project Contacts: GVC
Project Number: W10145-03
Scale: AS NOTED Date: 07/25/2022
Sheet Number
1 OF 6