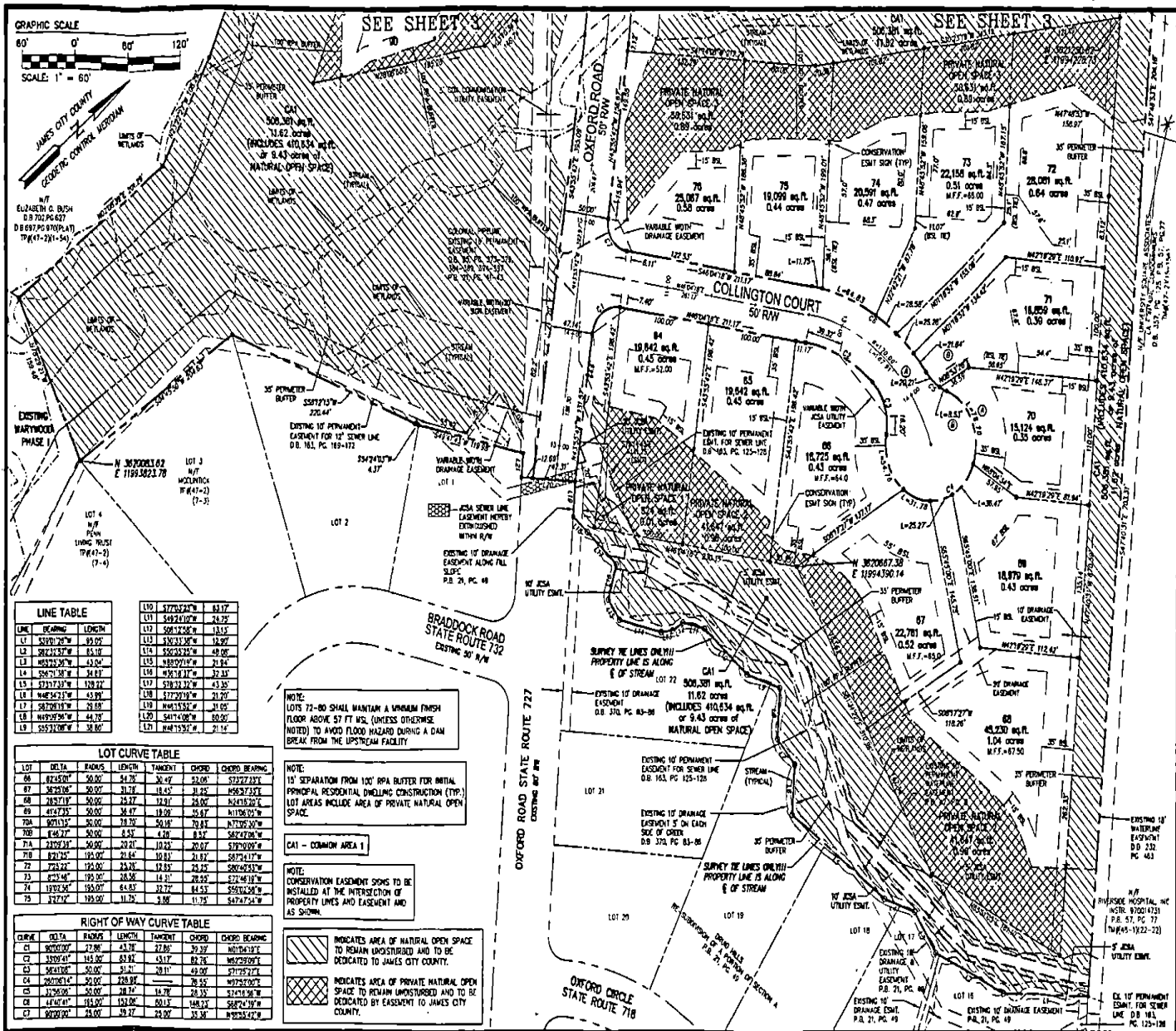


15008767



Page 5 of 5

LINE TABLE

LINE	BEARING	LENGTH
L1	S30°21'30"W	45.00'
L2	S82°43'30"W	83.10'
L3	S85°23'30"W	43.00'
L4	S84°21'30"W	34.87'
L5	S73°13'30"W	128.37'
L6	N46°54'30"W	43.99'
L7	S87°09'30"W	39.88'
L8	N49°59'30"W	44.70'
L9	S85°10'30"W	38.00'

LOT CURVE TABLE

LOT	DELTA	RADIUS	LENGTH	TANGENT	CHORD	CHORD BEARING
66	67°45'00"	50.00'	34.30'	36.47'	52.06'	S72°27'23"E
67	36°28'00"	50.00'	31.23'	18.45'	45.62'	S56°27'25"E
68	78°37'15"	50.00'	25.27'	12.81'	28.00'	N24°18'20"E
69	41°27'30"	50.00'	30.47'	18.39'	35.67'	N17°06'52"W
70A	90°11'15"	50.00'	29.59'	29.18'	42.70'	N72°09'30"W
70B	1°46'27"	50.00'	0.53'	4.26'	8.52'	S87°02'00"W
71A	210°21'30"	50.00'	23.81'	10.12'	20.07'	S70°00'00"W
71B	82°24'45"	100.00'	21.64'	10.82'	21.87'	S87°14'17"W
72	72°24'27"	125.00'	22.26'	11.82'	24.25'	S86°45'53"W
73	4°54'44"	125.00'	24.38'	11.81'	26.32'	S74°46'18"W
74	170°25'24"	125.00'	44.83'	12.72'	84.55'	S55°04'29"W
75	327°17'	125.00'	11.32'	3.90'	11.75'	S47°07'54"W

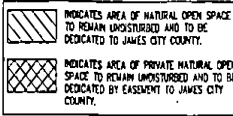
RIGHT OF WAY CURVE TABLE

CURVE	DELTA	RADIUS	LENGTH	TANGENT	CHORD	CHORD BEARING
C1	90°00'00"	27.86'	43.37'	27.86'	39.37'	N10°14'18"E
C2	33°09'47"	145.30'	83.37'	43.17'	82.76'	N62°59'07"E
C3	56°12'00"	50.00'	31.41'	15.71'	28.72'	N72°09'30"E
C4	200°05'14"	50.00'	228.93'	118.47'	117.92'	N72°09'30"E
C5	32°26'00"	50.00'	28.12'	14.76'	28.35'	S74°16'36"W
C6	44°40'45"	153.00'	121.00'	60.15'	148.13'	S87°14'17"W
C7	90°00'00"	28.00'	39.27'	28.00'	35.36'	N92°58'47"E

NOTE:
LOTS 72-80 SHALL MAINTAIN A MINIMUM FINISH FLOOR ABOVE 57 FT MSL (UNLESS OTHERWISE NOTED) TO AVOID FLOOD HAZARD DURING A DAM BREAK FROM THE UPSTREAM FACILITY.

NOTE:
15' SEPARATION FROM 100' RPA BUFFER FOR INITIAL PRINCIPAL RESIDENTIAL DWELLING CONSTRUCTION (TYP.) LOT AREAS INCLUDE AREA OF PRIVATE NATURAL OPEN SPACE.

NOTE:
CONSERVATION EASEMENT SIGNS TO BE INSTALLED AT THE INTERSECTION OF PROPERTY LINES AND EASEMENT AND AS SHOWN.



CONSULTING ENGINEERS
WILLIAMSBURG • RICHMOND • GLouceSTER

City of Williamsburg & County of James City
Circuit Court: This Plat was recorded on
May 15, 2015
3:31p AMPL PG. 10
Document# 16008767
BETSY B. WOODBRIDGE, CLERK
JPM

Large Sheet Plat
Recorded as 15008767

PLAT OF SUBDIVISION MARYWOOD PHASE II LOTS 64-90 PREPARED FOR CENTEX HOMES

JAMESTOWN DISTRICT JAMES CITY COUNTY VIRGINIA

Thomas C. Kelley
PROFESSOR
L.C. No. 1886
3/23/15
LAND SURVEYOR

NO.	DATE	REVISION / COMMENT / NOTE	REVISION BY	DATE
1	3/23/15	REVIEWED PLAT AND UPDATED NOTES	JAG	
2	4/3/15	REVIEWED PLAT AND UPDATED NOTES	JFS	
3	5/26/14	REVIEWED PLAT AND UPDATED NOTES	JFS	
4	4/3/09	REMOVED UTILITY EASEMENTS PER JCSA COMMENTS	JFS	
5	2/9/09	REMOVED PER COUNTY COMMENTS	JFS	

Designed JAG/MJR	Drawn JFS
Scale 1"=60'	Date 12/04/07
Project No. 9272	
Drawing No. 2 OF 3	

INSTRUMENT 202406495
RECORDED IN THE CLERK'S OFFICE OF
JAMES CITY CIRCUIT COURT ON
MAY 22, 2024 AT 08:48 AM
ELIZABETH E. O'CONNOR, CLERK
RECORDED BY: CEH