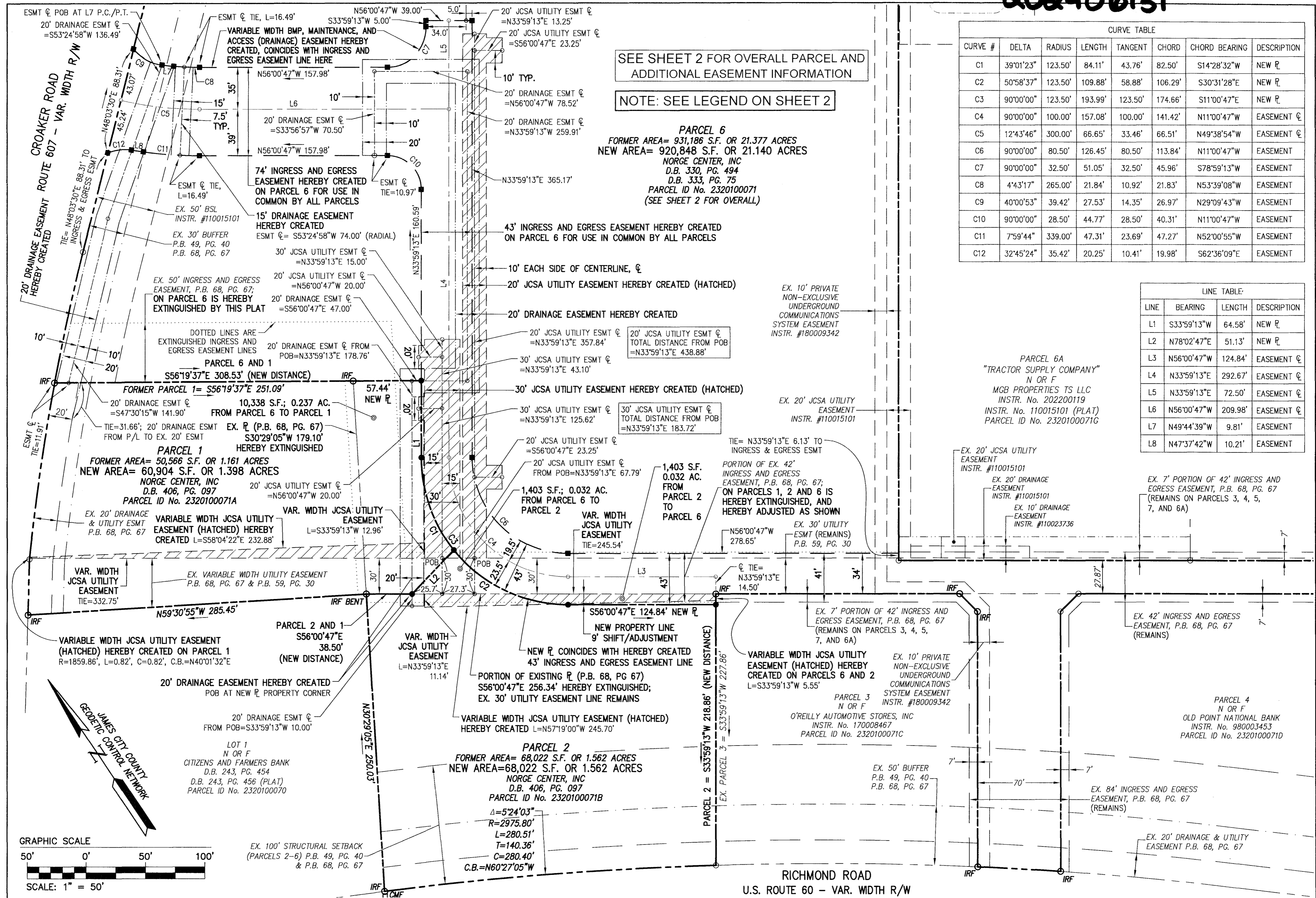


202406131



SEE SHEET 2 FOR OVERALL PARCEL AND ADDITIONAL EASEMENT INFORMATION  
 NOTE: SEE LEGEND ON SHEET 2

**PARCEL 6**  
 FORMER AREA= 931,186 S.F. OR 21.377 ACRES  
 NEW AREA= 920,848 S.F. OR 21.140 ACRES  
 NORGE CENTER, INC  
 D.B. 330, PG. 494  
 D.B. 333, PG. 75  
 PARCEL ID No. 2320100071  
 (SEE SHEET 2 FOR OVERALL)

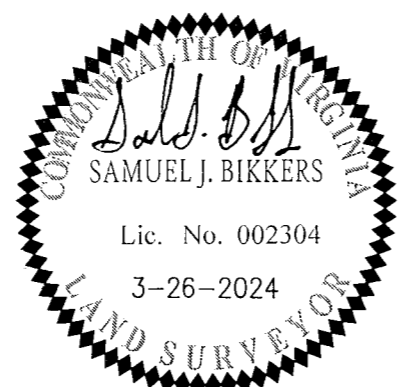
CURVE TABLE							
CURVE #	DELTA	RADIUS	LENGTH	TANGENT	CHORD	CHORD BEARING	DESCRIPTION
C1	39°01'23"	123.50'	84.11'	43.76'	82.50'	S14°28'32"W	NEW R.
C2	50°58'37"	123.50'	109.88'	58.88'	106.29'	S30°31'28"E	NEW R.
C3	90°00'00"	123.50'	193.99'	123.50'	174.66'	S11°00'47"E	NEW R.
C4	90°00'00"	100.00'	157.08'	100.00'	141.42'	N11°00'47"W	EASEMENT
C5	12°43'46"	300.00'	66.65'	33.46'	66.51'	N49°38'54"W	EASEMENT
C6	90°00'00"	80.50'	126.45'	80.50'	113.84'	N11°00'47"W	EASEMENT
C7	90°00'00"	32.50'	51.05'	32.50'	45.96'	S78°59'13"W	EASEMENT
C8	4°43'17"	265.00'	21.84'	10.92'	21.83'	N53°39'08"W	EASEMENT
C9	40°00'53"	39.42'	27.53'	14.35'	26.97'	N29°09'43"W	EASEMENT
C10	90°00'00"	28.50'	44.77'	28.50'	40.31'	N11°00'47"W	EASEMENT
C11	7°59'44"	339.00'	47.31'	23.69'	47.27'	N52°00'55"W	EASEMENT
C12	32°45'24"	35.42'	20.25'	10.41'	19.98'	S62°36'09"E	EASEMENT

LINE TABLE			
LINE	BEARING	LENGTH	DESCRIPTION
L1	S33°59'13"W	64.58'	NEW R.
L2	N78°02'47"E	51.13'	NEW R.
L3	N56°00'47"W	124.84'	EASEMENT
L4	N33°59'13"E	292.67'	EASEMENT
L5	N33°59'13"E	72.50'	EASEMENT
L6	N56°00'47"W	209.98'	EASEMENT
L7	N49°44'39"W	9.81'	EASEMENT
L8	N47°37'42"W	10.21'	EASEMENT

PARCEL 6A  
 "TRACTOR SUPPLY COMPANY"  
 N OR F  
 MGB PROPERTIES TS LLC  
 INSTR. No. 202200119  
 INSTR. No. 110015101 (PLAT)  
 PARCEL ID No. 2320100071G

City of Williamsburg & County of James City  
 Circuit Court: This PLAT was recorded on  
 May 14, 2024  
 at 1:14 AM/PM, PB - PG -  
 Document # 202406131  
 ELIZABETH E. O'CONNOR, CLERK  
 Elizabeth E. O'Connor, Clerk

4 Large Small Plat(s) Recorded  
 herewith as # 202406131



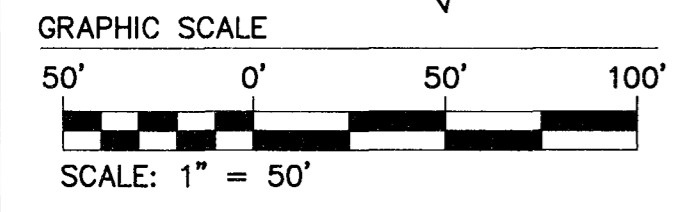
**AES**  
 CONSULTING ENGINEERS  
 5248 Olde Towne Road, Suite 1  
 Williamsburg, Virginia 23188  
 Phone: (757) 253-0040  
 www.aesva.com

REF: JCC CASE No. S-24-0001

PLAT OF BOUNDARY LINE ADJUSTMENT  
 AND INGRESS AND EGRESS EASEMENT  
 PARCEL 1, PARCEL 2, AND PARCEL 6  
 BEING PROPERTIES OWNED BY  
 NORGE CENTER, INC., A VIRGINIA CORPORATION

STONEHOUSE DISTRICT      COUNTY OF JAMES CITY      VIRGINIA

Project Contacts:	SJB / CMA
Project Number:	W06753-08S
Scale:	Date:
1" = 50'	01-04-2024
Sheet Number	3



Rev.	Date	Description	Revised By
1	3-26-2024	REVISED PER AGENCY COMMENTS, RCVD 2024-02-29	CMA