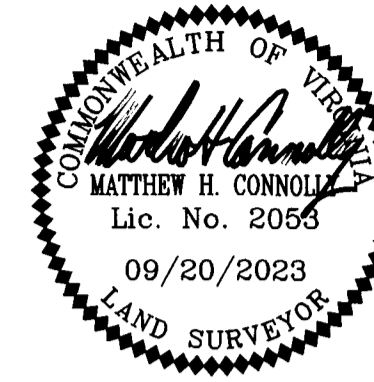


202401696

SUBDIVISION OF
STONEHOUSE
LAND BAY 5
PHASE 3

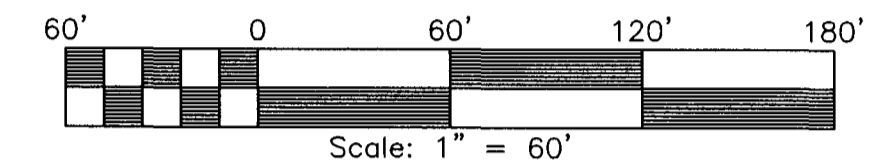
STONEHOUSE DISTRICT JAMES CITY COUNTY VIRGINIA
DATE: 9/20/2023 JOB # 20-224



LandTech
Resources, Inc.
Engineering & Surveying Consultants

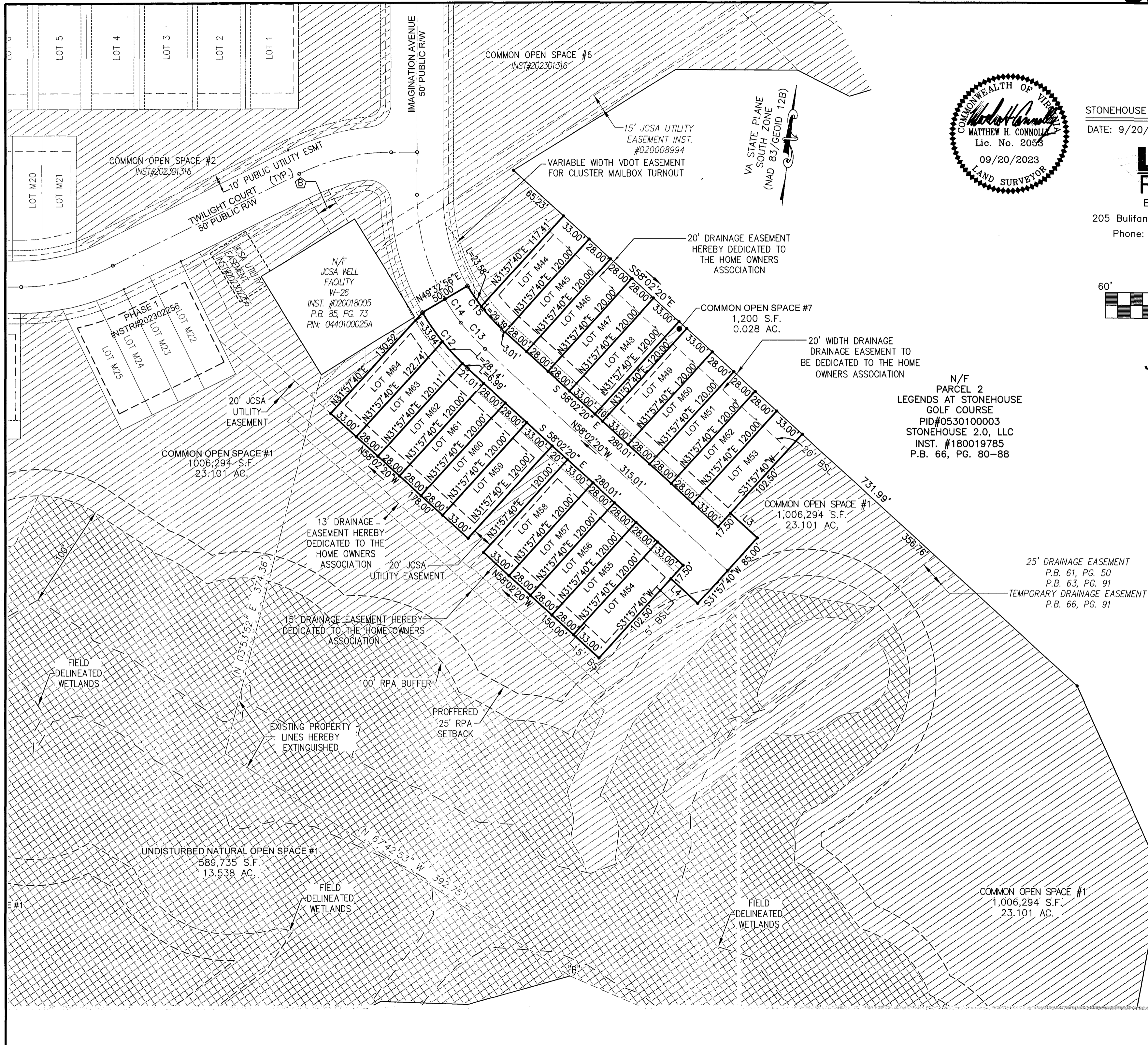
205 Bulifants Blvd., Suite E, Williamsburg, Virginia 23188
Phone: (757) 565-1677 Fax: (757) 565-0782
web: landtechresources.com

SHEET 4 OF 5



JCC-S-23-0026

N/F
PARCEL 2
LEGENDS AT STONEHOUSE
GOLF COURSE
PID#0530100003
STONEHOUSE 2.0, LLC
INST. #180019785
P.B. 66, PG. 80-88



25' DRAINAGE EASEMENT
P.B. 61, PG. 50
P.B. 63, PG. 91
TEMPORARY DRAINAGE EASEMENT
P.B. 66, PG. 91

5 Large/Small Plat(s) Recorded
herewith as # 202401696

City of Williamsburg & County of James City
Circuit Court: This PLAT was recorded on
February 1, 2024
at 9:24 AM P.M., PB — PG —
Document # 202401696
ELIZABETH E. O'CONNOR, CLERK
Elizabeth E. O'Connor, Clerk

LEGEND

	20' JCSA ACCESS EASEMENT
	UNDISTURBED NATURAL OPEN SPACE
	COMMON NATURAL OPEN SPACE
	IRF • IRON ROD FOUND
	• IRON ROD TO BE SET
SEE SHEET 5 FOR LINE TABLES, CURVE TABLES & LOT AREA TABLES.	