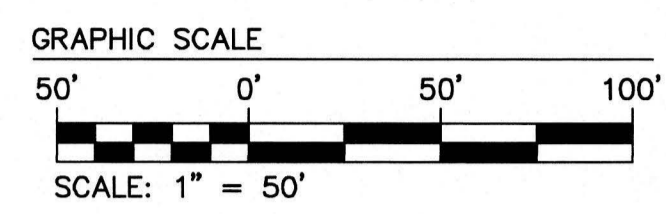
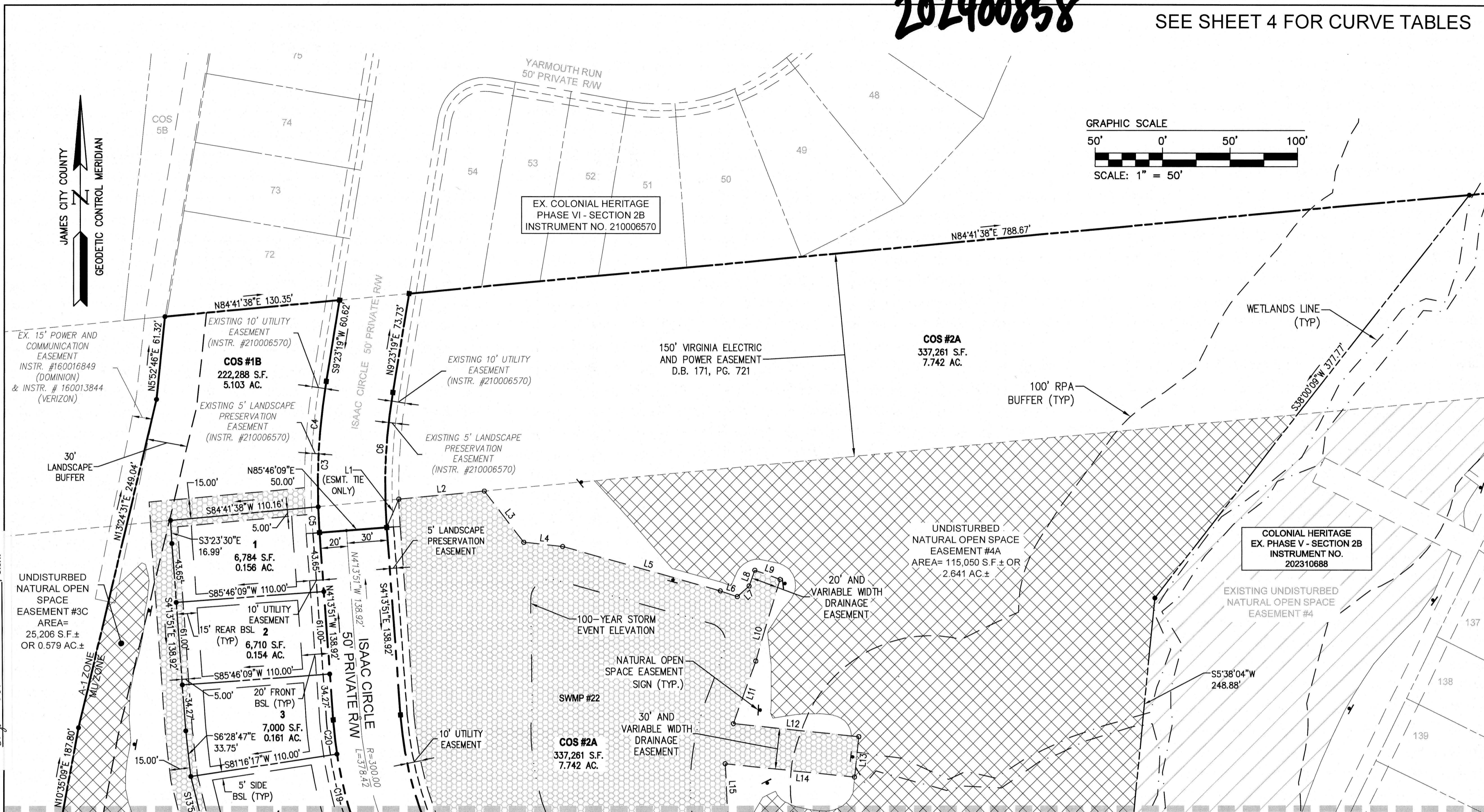


202400858

SEE SHEET 4 FOR CURVE TABLES



4 Large/Small Plat(s) Recorded herewith as # 202400858

City of Williamsburg & County of James City Circuit Court. This PLAT was recorded on January 18, 2024 at 2:23 AM (PM) PB Document # 202400858 ELIZABETH E. O'CONNOR, CLERK Elizabeth E. O'Connell, Clerk

SEE SHEET 4

SEE SHEET 4

SEE SHEET 4

| LINE | BEARING     | LENGTH  |
|------|-------------|---------|
| L1   | N23°14'55"E | 22.75'  |
| L2   | N84°41'38"E | 63.69'  |
| L3   | S37°39'14"E | 47.76'  |
| L4   | S83°50'58"E | 28.91'  |
| L5   | S74°15'07"E | 121.30' |
| L6   | S71°43'44"E | 13.40'  |

| LINE | BEARING     | LENGTH |
|------|-------------|--------|
| L7   | N48°50'03"E | 11.83' |
| L8   | N20°04'11"E | 12.34' |
| L9   | S69°55'49"E | 20.00' |
| L10  | S16°44'41"W | 62.75' |
| L11  | S19°54'37"W | 49.23' |
| L12  | S84°02'48"E | 93.20' |

| LINE | BEARING     | LENGTH  |
|------|-------------|---------|
| L13  | S5°57'12"W  | 30.00'  |
| L14  | N84°02'48"W | 96.29'  |
| L15  | S2°54'22"E  | 46.38'  |
| L16  | S20°46'08"E | 46.38'  |
| L17  | S76°30'12"E | 172.87' |
| L18  | S5°47'58"E  | 29.90'  |

| LINE | BEARING     | LENGTH |
|------|-------------|--------|
| L19  | S20°13'15"E | 18.70' |
| L20  | S23°15'55"E | 19.71' |
| L21  | S37°03'40"E | 23.82' |
| L22  | S51°49'38"E | 23.29' |
| L23  | S62°38'02"E | 18.93' |
| L24  | S74°26'10"E | 13.20' |

| LINE | BEARING     | LENGTH  |
|------|-------------|---------|
| L25  | S13°29'48"W | 26.57'  |
| L26  | N76°30'12"W | 122.92' |
| L27  | N13°29'48"E | 96.00'  |
| L28  | N76°30'12"W | 136.26' |
| L29  | S44°41'48"E | 27.54'  |
| L30  | S34°01'18"E | 19.65'  |

| LINE | BEARING     | LENGTH |
|------|-------------|--------|
| L31  | S2°20'34"E  | 19.65' |
| L32  | S13°29'48"W | 49.31' |
| L33  | S35°17'53"W | 10.77' |

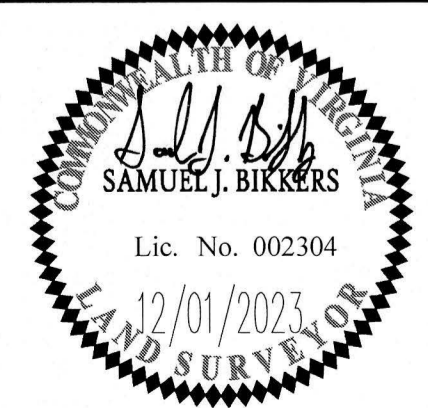
**LEGEND:**

- UNDISTURBED NATURAL OPEN SPACE EASEMENT AND CONSERVATION AREA
- EXISTING NATURAL OPEN SPACE EASEMENT AND CONSERVATION AREA
- VARIABLE WIDTH DRAINAGE EASEMENT

**UNDISTURBED NATURAL OPEN SPACE EASEMENT AREA TABULATION**

|              |                      |                   |
|--------------|----------------------|-------------------|
| #3B          | 121,547 S.F.±        | 2.790 AC.±        |
| #3C          | 25,206 S.F.±         | 0.579 AC.±        |
| #4A          | 115,050 S.F.±        | 2.641 AC.±        |
| <b>TOTAL</b> | <b>261,803 S.F.±</b> | <b>6.010 AC.±</b> |

| Rev. | Date     | Description  | Revised By |
|------|----------|--|------------|
| 1    | 12/01/23 | REVISED PER COUNTY COMMENTS DATED OCTOBER 25, 2023 | JFS        |



**AES**  
CONSULTING ENGINEERS  
5248 Olde Towne Road, Suite 1  
Williamsburg, Virginia 23188  
Phone: (757) 253-0040  
Fax: (757) 220-8994  
www.aesva.com  
Hampton Roads | Central Virginia | Middle Peninsula

PLAT OF SUBDIVISION  
LOTS 1-26, 145-146  
COS #1B AND COS #2A  
**COLONIAL HERITAGE  
PHASE V - SECTION 2C**  
OWNER / DEVELOPER: COLONIAL HERITAGE, LLC  
STONEHOUSE DISTRICT JAMES CITY COUNTY VIRGINIA

Project Contacts: SJB/JFS  
Project Number: 8881-52C  
Scale: 1" = 50' Date: 12/01/23  
Sheet Number  
**3 of 4**