


20232770

CERTIFICATION OF PLANS
 I, BRIAN LONG, A DULY LICENSED LAND SURVEYOR
 IN THE COMMONWEALTH OF VIRGINIA, DO HEREBY
 CERTIFY THAT THIS PLAN IS ACCURATE AND COMPLIES WITH
 SECTION 55.1-1920(B) OF THE VIRGINIA CONDOMINIUM ACT AS
 AMENDED, AND THAT ALL UNITS OR PORTIONS OF SUCH UNITS
 SHOWN HEREON ARE SUBSTANTIALLY COMPLETED.
 DATE: 9/5/23 NAME: BRIAN LONG
 LIC. NO. 2372
 SQUARE FOOTAGES ARE CALCULATED BY THE SUM OF HORIZONTAL
 INTERIOR AREAS MEASURED FROM THE BACKSIDE OF SHEETROCK.

ARCHITECT:

 8521 Leesburg Pike | Suite 700 |
 Vienna, VA 22182
 P: 571.830.1800 | F: 571.830.1801
 www.lessarddesign.com

SEAL & SIGNATURE:

 OWNER:
 CONSULTANTS:

COMMONWEALTH OF VIRGINIA
 BRIAN M LONG
 Lic. No. 2372
 9/9/23
 LAND SURVEYOR

PROJECT NAME:
 HHHunt
 VILLAGE GREEN NORTH AT QUARTERPATH, A CONDOMINIUM
 WILLIAMSBURG, VA
 SHEET TITLE:
 CONDO DOCUMENTATION - BUILDING 74
 KENT #16A / WINCHESTER #16B FLOOR PLANS
 ISSUE / REVISION:

No.	DESCRIPTION	DATE
1	CONDO DOCUMENTS	03.22.23

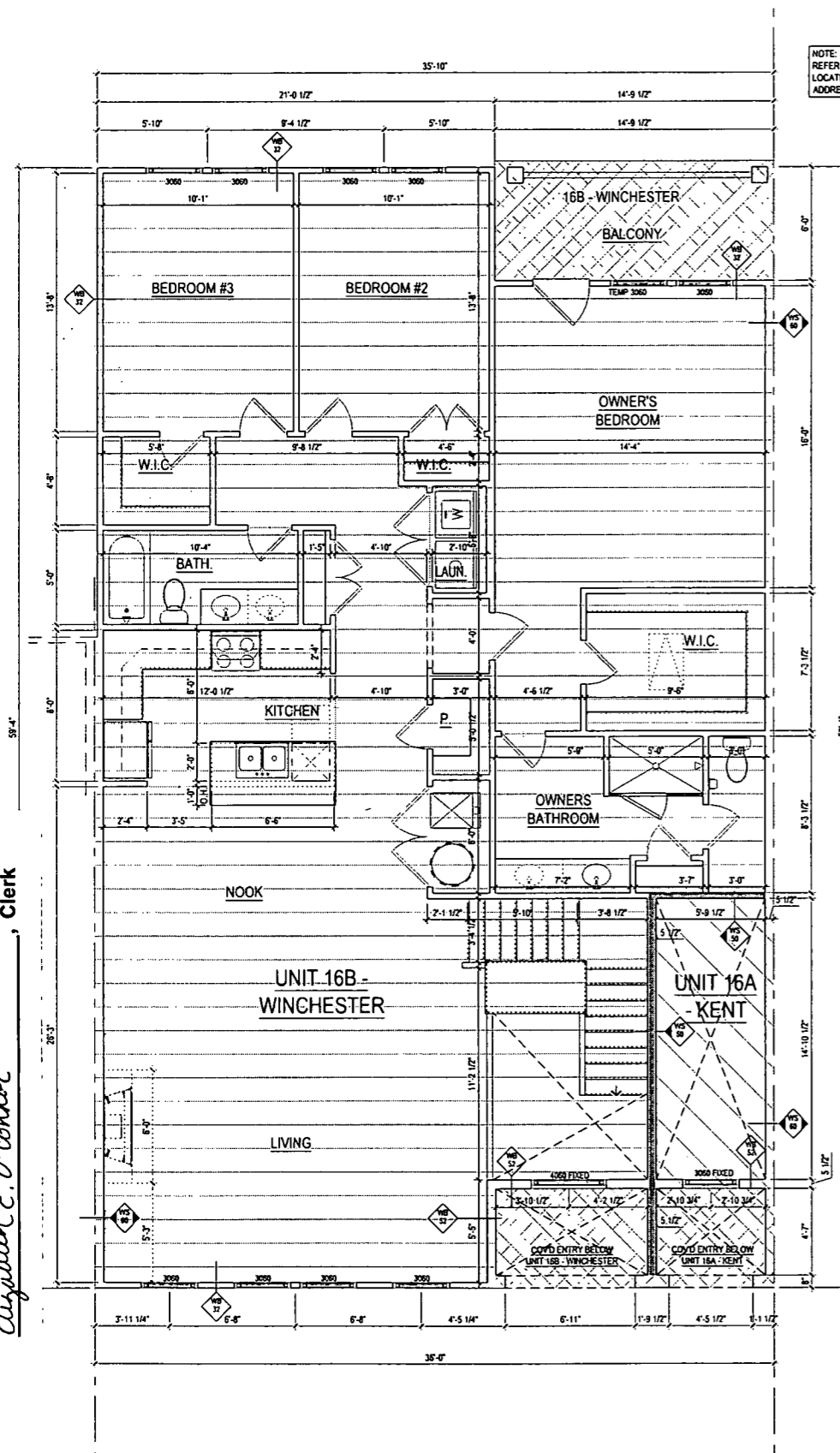
 DRAWN BY:
 CHECKED BY:
 PLOT DATE:
 FILE NAME:

LEGEND

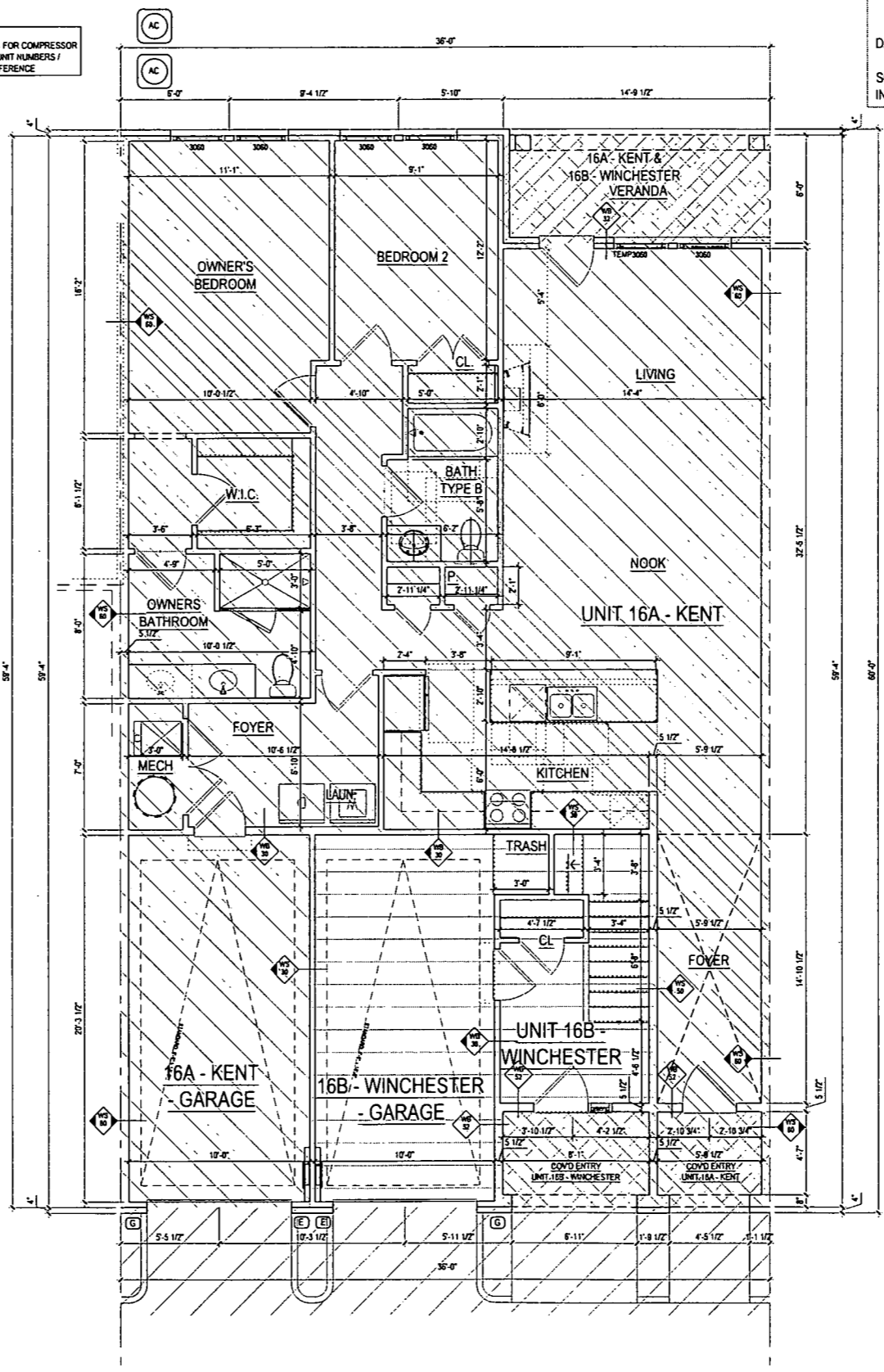
- UNIT 14A LINCOLN
- UNIT 14B YORK
- UNIT 15A KENT
- UNIT 15B WINCHESTER
- UNIT 16A KENT
- UNIT 16B WINCHESTER
- UNIT 17A LINCOLN
- UNIT 17B YORK
- COMMON ELEMENTS
- LIMITED COMMON ELEMENTS

NOTE: THE EXTERIOR OF THE BUILDING SHALL BE CONSIDERED A COMMON ELEMENT EXCEPT FOR PORCHES AND BALCONIES THAT ARE OTHERWISE NOTED AS LIMITED COMMON ELEMENTS.

NOTE:
 REFER TO A-1 FOR COMPRESSOR
 LOCATIONS, UNIT NUMBERS /
 ADDRESS REFERENCE



2 SECOND FLOOR PLAN @ ALL ELEV.
 SCALE: 1/8" = 1'-0"
 WINCHESTER AREA: 1,336 SQ. FT.



1 GROUND FLOOR PLAN @ ALL ELEV.
 SCALE: 1/8" = 1'-0"
 KENT AREA: 1,409 SQ. FT.

Large/Small Plat(s) Recorded
 herewith as # 20232770

City of Williamsburg & County of James City
 Circuit Court: This PLAT was recorded on
 at 3:14 AM on SEP 14 2023 PG. 1
 Document # 20232770
 ELIZABETH E. O'CONNOR, CLERK
 Elizabeth E. O'Conner, Clerk

SHEET LESSARD DESIGN INC. EXPRESSLY RESERVES ITS CONDOMINIUM COPYRIGHT AND OTHER PROPERTY RIGHTS IN THESE PLANS. THESE PLANS ARE NOT TO BE REPRODUCED, CHANGED OR COPIED IN ANY FORM OR MANNER WHATSOEVER, WITHOUT FIRST OBTAINING THE EXPRESS WRITTEN PERMISSION AND CONSENT OF LESSARD DESIGN INC.