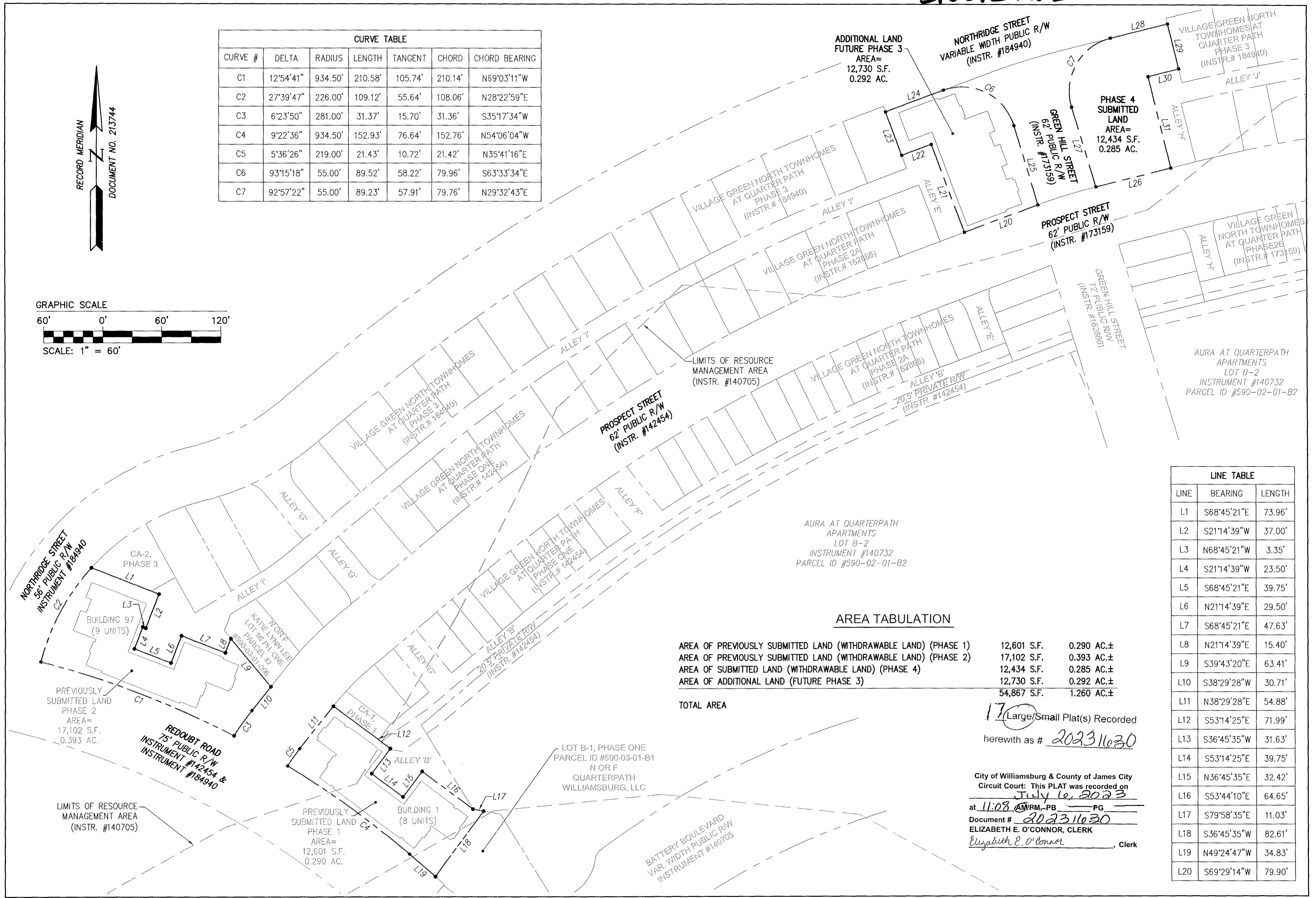
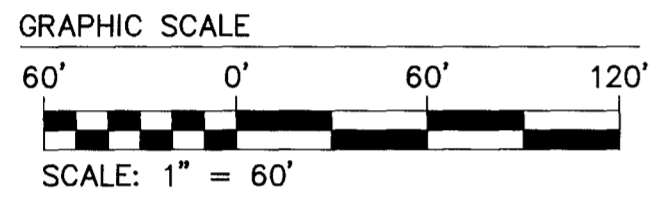
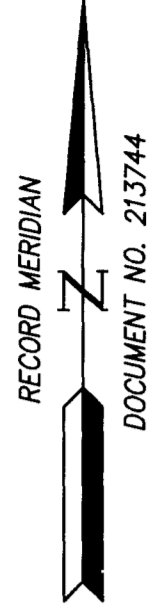


20231630

CURVE TABLE						
CURVE #	DELTA	RADIUS	LENGTH	TANGENT	CHORD	CHORD BEARING
C1	12°54'41"	934.50'	210.58'	105.74'	210.14'	N69°03'11"W
C2	27°39'47"	226.00'	109.12'	55.64'	108.06'	N28°22'59"E
C3	6°23'50"	281.00'	31.37'	15.70'	31.36'	S35°17'34"W
C4	9°22'36"	934.50'	152.93'	76.64'	152.76'	N54°06'04"W
C5	5°36'26"	219.00'	21.43'	10.72'	21.42'	N35°41'16"E
C6	93°15'18"	55.00'	89.52'	58.22'	79.96'	S63°33'34"E
C7	92°57'22"	55.00'	89.23'	57.91'	79.76'	N29°32'43"E



LINE TABLE		
LINE	BEARING	LENGTH
L1	S68°45'21"E	73.96'
L2	S21°14'39"W	37.00'
L3	N68°45'21"W	3.35'
L4	S21°14'39"W	23.50'
L5	S68°45'21"E	39.75'
L6	N21°14'39"E	29.50'
L7	S68°45'21"E	47.63'
L8	N21°14'39"E	15.40'
L9	S39°43'20"E	63.41'
L10	S38°29'28"W	30.71'
L11	N38°29'28"E	54.88'
L12	S53°14'25"E	71.99'
L13	S36°45'35"W	31.63'
L14	S53°14'25"E	39.75'
L15	N36°45'35"E	32.42'
L16	S53°44'10"E	64.65'
L17	S79°58'35"E	11.03'
L18	S36°45'35"W	82.61'
L19	N49°24'47"W	34.83'
L20	S69°29'14"W	79.90'

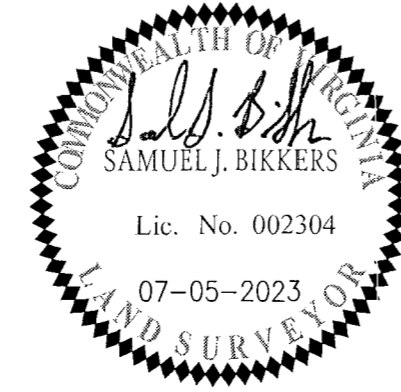
AREA TABULATION

AREA OF PREVIOUSLY SUBMITTED LAND (WITHDRAWABLE LAND) (PHASE 1)	12,601 S.F.	0.290 AC.±
AREA OF PREVIOUSLY SUBMITTED LAND (WITHDRAWABLE LAND) (PHASE 2)	17,102 S.F.	0.393 AC.±
AREA OF SUBMITTED LAND (WITHDRAWABLE LAND) (PHASE 4)	12,434 S.F.	0.285 AC.±
AREA OF ADDITIONAL LAND (FUTURE PHASE 3)	12,730 S.F.	0.292 AC.±
TOTAL AREA	54,867 S.F.	1.260 AC.±

17 Large/Small Plat(s) Recorded
herewith as # 20231630

City of Williamsburg & County of James City
Circuit Court: This PLAT was recorded on
July 16, 2023
at 11:08 AM IRM-PB PG
Document # 20231630
ELIZABETH E. O'CONNOR, CLERK
Elizabeth E. O'Connor, Clerk

SURVEYOR'S CERTIFICATE
I, SAMUEL J. BIKKERS, A DULY LICENSED LAND SURVEYOR IN THE COMMONWEALTH OF VIRGINIA, DO HEREBY CERTIFY THAT THIS PLAT IS ACCURATE AND COMPLIES WITH SECTION 55.1-1920(A) OF THE VIRGINIA CONDOMINIUM ACT AS AMENDED, AND THAT ALL UNITS OR PORTIONS OF SUCH UNITS SHOWN HEREON ARE SUBSTANTIALLY COMPLETE.
Samuel J. Bickers
SAMUEL J. BIKKERS, L.S. #002304
DATE: 7/05/2023



AES
CONSULTING ENGINEERS
5248 Olde Towne Road, Suite 1
Williamsburg, Virginia 23188
Phone: (757) 253-0040
Fax: (757) 220-8994
www.aesva.com
Hampton Roads | Central Virginia | Middle Peninsula

EXHIBIT
CONDOMINIUM PLAT SHOWING PHASE 4
SUBMITTED LAND AND EXISTING EASEMENTS
**VILLAGE GREEN NORTH AT
QUARTERPATH CONDOMINIUM**
CITY OF WILLIAMSBURG VIRGINIA

Project Contacts: GVC / SUB
Project Number: W10219-12
Scale: 1" = 60' Date: 02-24-2023
Sheet Number
3 OF 3