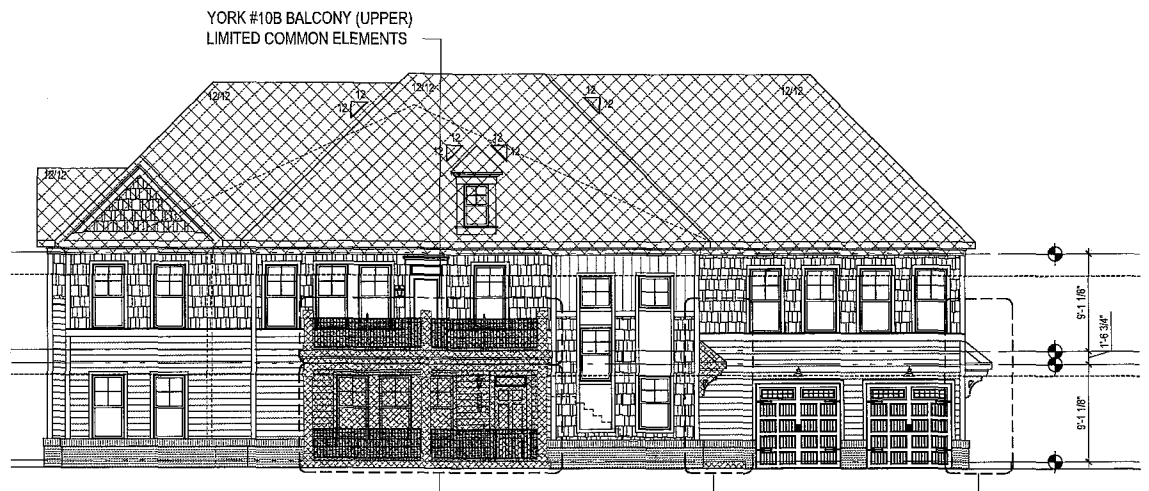
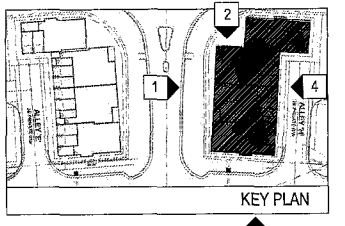


#20231630

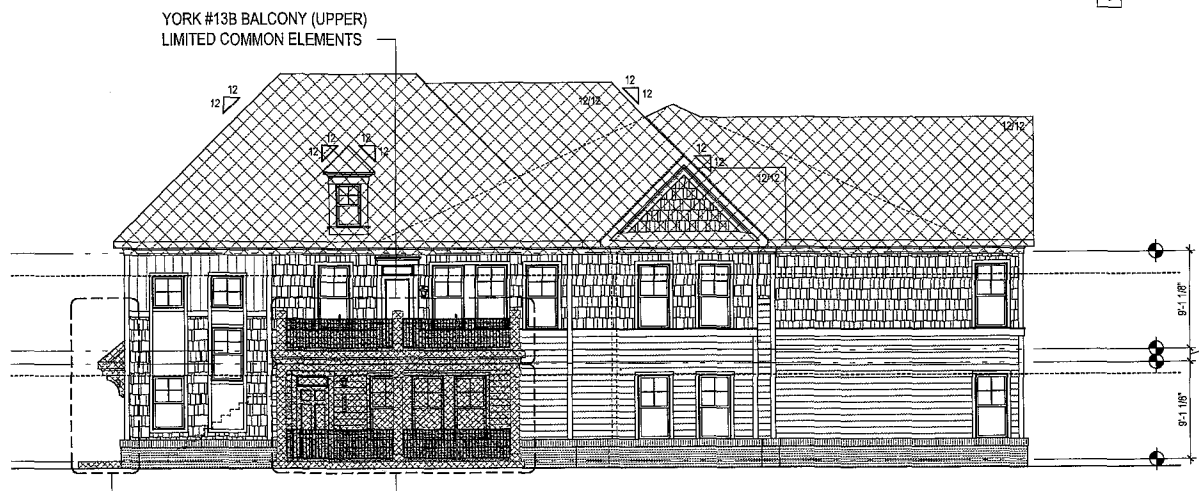


4
A-3
REAR ELEVATION
SCALE: 1/8" = 1'-0"

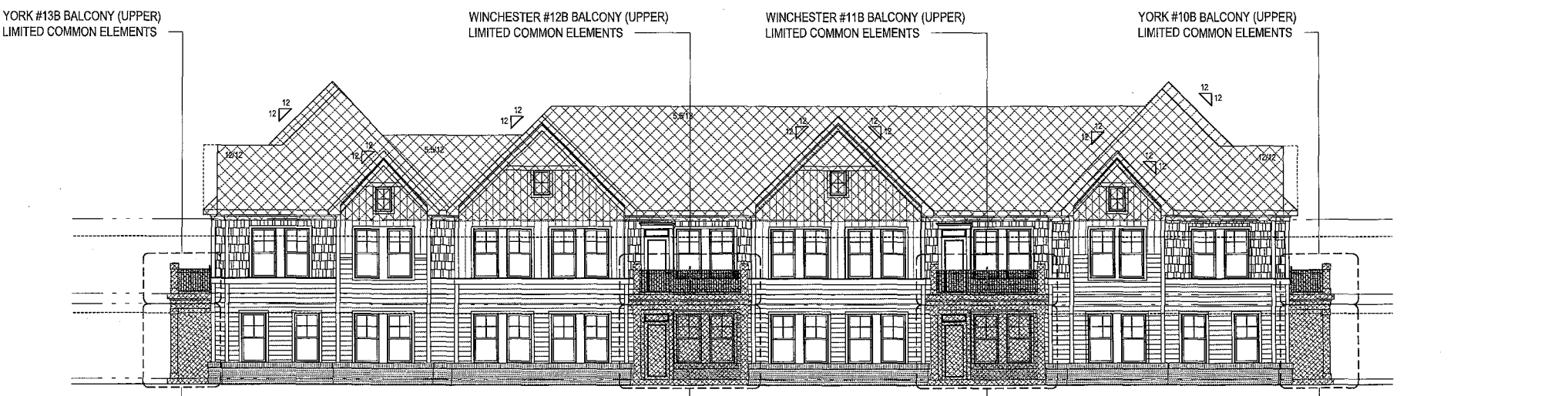
CERTIFICATION OF PLANS
 I, Bramley, A DULY LICENSED ENGINEER ARCHITECT, IN THE COMMONWEALTH OF VIRGINIA, DO HEREBY CERTIFY THAT THIS PLAN IS ACCURATE AND COMPLIES WITH SECTION 55.1-1920(B) OF THE VIRGINIA CONDOMINIUM ACT AS AMENDED, AND THAT ALL UNITS OR PORTIONS OF SUCH UNITS SHOWN HEREON ARE SUBSTANTIALLY COMPLETED.
 DATE: 4-6-23 NAME: Bramley
 LIC. NO. 2777
 SQUARE FOOTAGES ARE CALCULATED BY THE SUM OF HORIZONTAL INTERIOR AREAS MEASURED FROM THE BACKSIDE OF SHEETROCK.



3
A-3
RIGHT SIDE ELEVATION
SCALE: 1/8" = 1'-0"



2
A-3
LEFT SIDE ELEVATION
SCALE: 1/8" = 1'-0"



1
A-3
FRONT ELEVATION
SCALE: 1/8" = 1'-0"

LEGEND

- [Cross-hatch] UNIT 10A LINCOLN
- [Grid] UNIT 10B YORK
- [Diagonal lines] UNIT 11A KENT
- [Horizontal lines] UNIT 11B WINCHESTER
- [Vertical lines] UNIT 12A KENT
- [Stippled] UNIT 12B WINCHESTER
- [Vertical lines] UNIT 13A LINCOLN
- [Diagonal lines] UNIT 13B YORK
- [Cross-hatch] COMMON ELEMENTS
- [Solid black] LIMITED COMMON ELEMENTS

NOTE: THE EXTERIOR OF THE BUILDING SHALL BE CONSIDERED A COMMON ELEMENT EXCEPT FOR PORCHES AND BALCONIES THAT ARE OTHERWISE NOTED AS LIMITED COMMON ELEMENTS.

ARCHITECT:

 8521 Leesburg Pike | Suite 700 | Vienna, VA 22182
 P: 571.830.1800 | F: 571.830.1801
 www.lessarddesign.com

SEAL & SIGNATURE:

OWNER:

 HHHUNT
 11777 HUNTERS RIDGE
 WILMINGTON, VA 23406
 (804) 785-8800

CONSULTANTS:

PROJECT NAME:
 HHHunt
 VILLAGE GREEN NORTH AT QUARTERPATH, A CONDOMINIUM
 WILLIAMSBURG, VA

SHEET TITLE:
 CONDO DOCUMENTATION - BUILDING 71
 ELEVATION

ISSUE / REVISION:	DATE
No. DESCRIPTION	
1 CONDO DOCUMENTS	05.22.23

PROJECT No: HUN033A
 DRAWN BY: LD
 CHECKED BY:
 PLOT DATE: Mar. 22, 2023
 FILE NAME: HUN-033A_A3_071.dwg

A-3

City of Williamsburg & County of James City
 Circuit Court: This PLAT was recorded on
July 6, 2023
 at 11:08 AM PG
 Document # 20231630
 ELIZABETH E. O'CONNOR, CLERK
 Elizabeth E. O'Connor Clerk

17 Large/Small Plat(s) Recorded
 herewith as # 20231630

© 2023 LESSARD DESIGN, INC. ALL RIGHTS RESERVED. THESE PLANS ARE NOT TO BE REPRODUCED, CHANGED OR COPIED IN ANY FORM OR MANNER WHATSOEVER, NOR ARE THEY TO BE ASSIGNED TO ANY THIRD PARTY, WITHOUT FIRST OBTAINING THE WRITTEN PERMISSION AND CONSENT OF LESSARD DESIGN, INC.