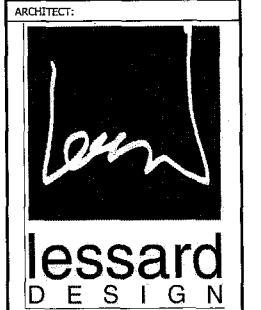


17 Large/Small Plat(s) Recorded  
 herewith as # 20231630

City of Williamsburg & County of James City  
 Circuit Court: This PLAT was recorded on  
 July 6, 2023  
 at 11:08 AM/PM, PB PG  
 Document # 20231630  
 ELIZABETH E. O'CONNOR, CLERK  
 Elizabeth E. O'Connor, Clerk

# 20231630

CERTIFICATION OF PLANS  
 I, Brian Lane, A DULY LICENSED SURVEYOR ARCHITECT, IN THE COMMONWEALTH OF VIRGINIA, DO HEREBY CERTIFY THAT THIS PLAN IS ACCURATE AND COMPLIES WITH SECTION 55.1-1920(B) OF THE VIRGINIA CONDOMINIUM ACT AS AMENDED, AND THAT ALL UNITS OR PORTIONS OF SUCH UNITS SHOWN HEREON ARE SUBSTANTIALLY COMPLETED.  
 DATE: 4-6-23 NAME: Brian Lane LIC. NO. 2377  
 SQUARE FOOTAGES ARE CALCULATED BY THE SUM OF HORIZONTAL INTERIOR AREAS MEASURED FROM THE BACKSIDE OF SHEETROCK.



8521 Lessard Pike | Suite 700 |  
 Vienna, VA 22182  
 P: 571.830.1800 | F: 571.830.1801  
 www.lessarddesign.com

SEAL & SIGNATURE:



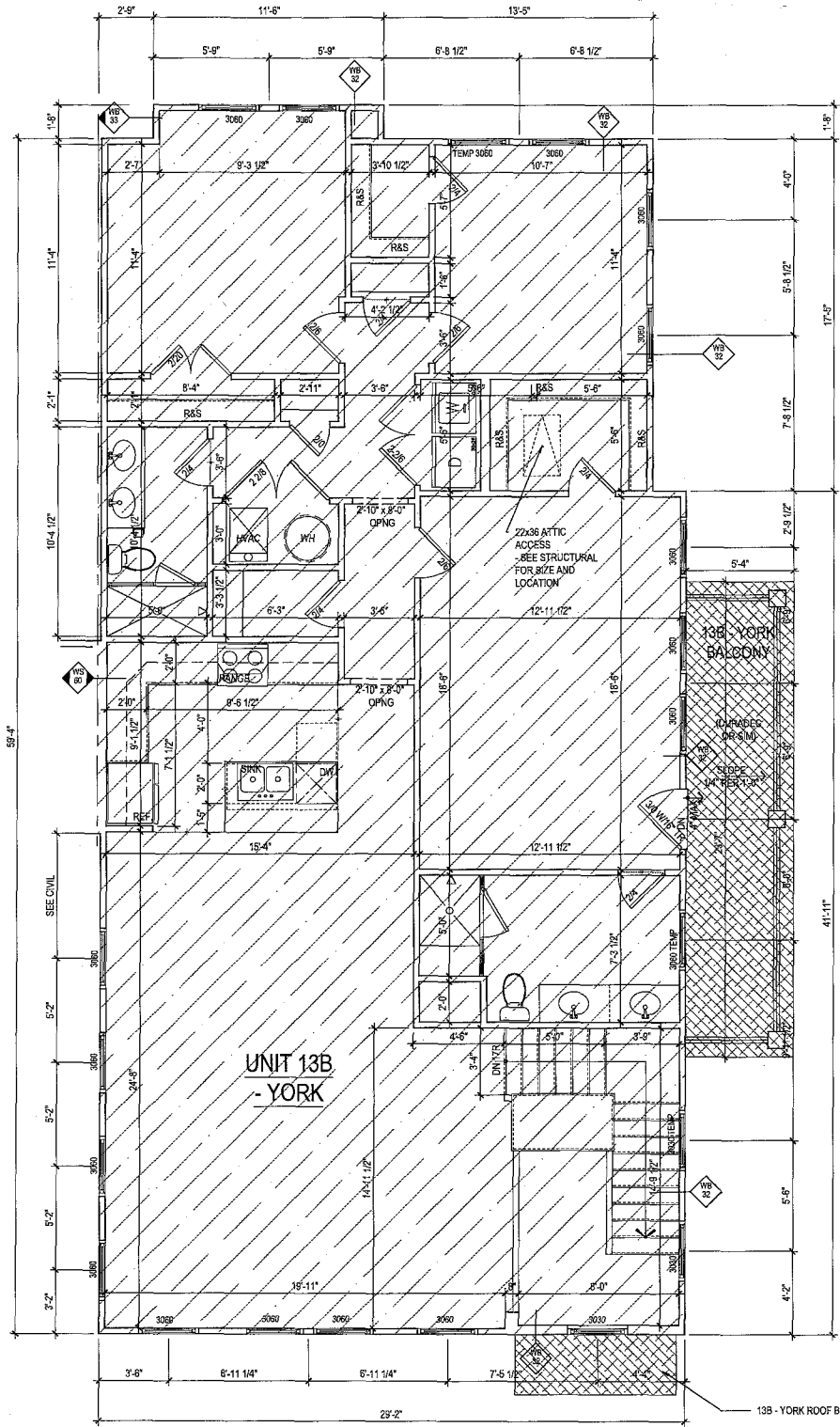
CONSULTANTS:

PROJECT NAME:  
 VILLAGE GREEN NORTH AT QUARTERPATH, A CONDOMINIUM  
 WILLIAMSBURG, VA

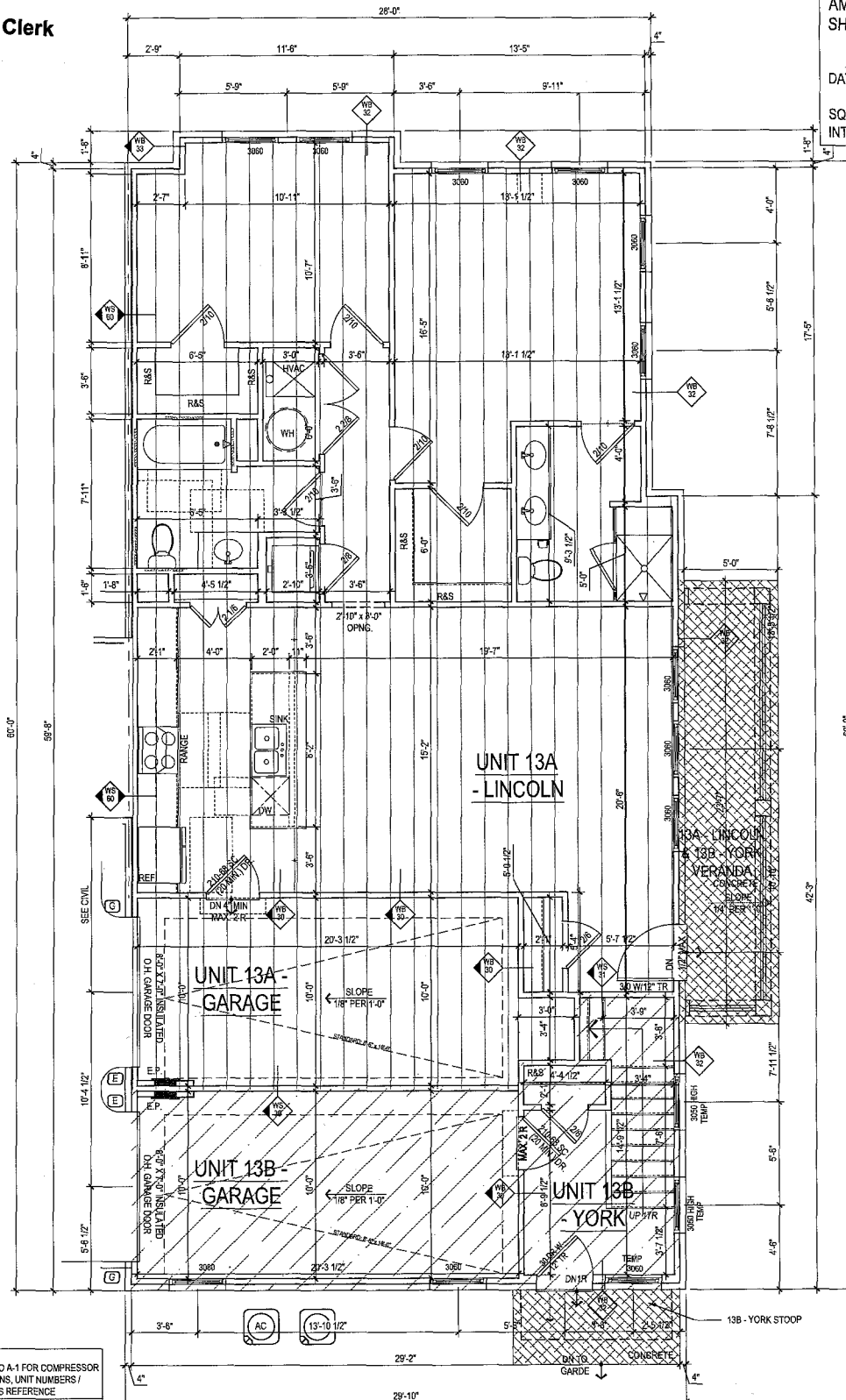
BHEET TITLE:  
 CONDO DOCUMENTATION - BUILDING 71  
 LINCOLN #13A / YORK #13B FLOOR PLANS

ISSUE / REVISION:		DATE
NO.	DESCRIPTION	03.22.23
CONDO DOCUMENTS		
PROJECT No.:		MUNDOM
DRAWN BY:		LD
CHECKED BY:		
PLOT DATE:		Mar. 22, 2023
FILE NAME:		HLN D04_A2c_07.dwg

A-2c



2 SECOND FLOOR PLAN @ ALL ELEV.  
 SCALE: 1/8" = 1'-0" WINCHESTER AREA: 1,936 SQ. FT.



1 GROUND FLOOR PLAN @ ALL ELEV.  
 SCALE: 1/8" = 1'-0" KENT AREA: 1,409 SQ. FT.

LEGEND

- UNIT 10A LINCOLN
- UNIT 10B YORK
- UNIT 11A KENT
- UNIT 11B WINCHESTER
- UNIT 12A KENT
- UNIT 12B WINCHESTER
- UNIT 13A LINCOLN
- UNIT 13B YORK
- COMMON ELEMENTS
- LIMITED COMMON ELEMENTS

NOTE: THE EXTERIOR OF THE BUILDING SHALL BE CONSIDERED A COMMON ELEMENT EXCEPT FOR PORCHES AND BALCONIES THAT ARE OTHERWISE NOTED AS LIMITED COMMON ELEMENTS.