

**BOUNDARY LINE EXTINGUISHMENT
& SUBDIVISION PLAT
OF
LOTS 1-3
CREATING
LOT 1 & LOT 1A
HITCHENS SUBDIVISION**

CITY OF WILLIAMSBURG, VIRGINIA

DATE: 3/15/2023 SCALE: 1"=20' JOB # 22-382



LandTech
Resources, Inc.

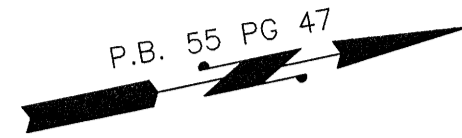
Engineering & Surveying Consultants

205 Bulifants Blvd., Suite E, Williamsburg, Virginia 23188

Phone: (757) 565-1677 Fax: (757) 565-0782

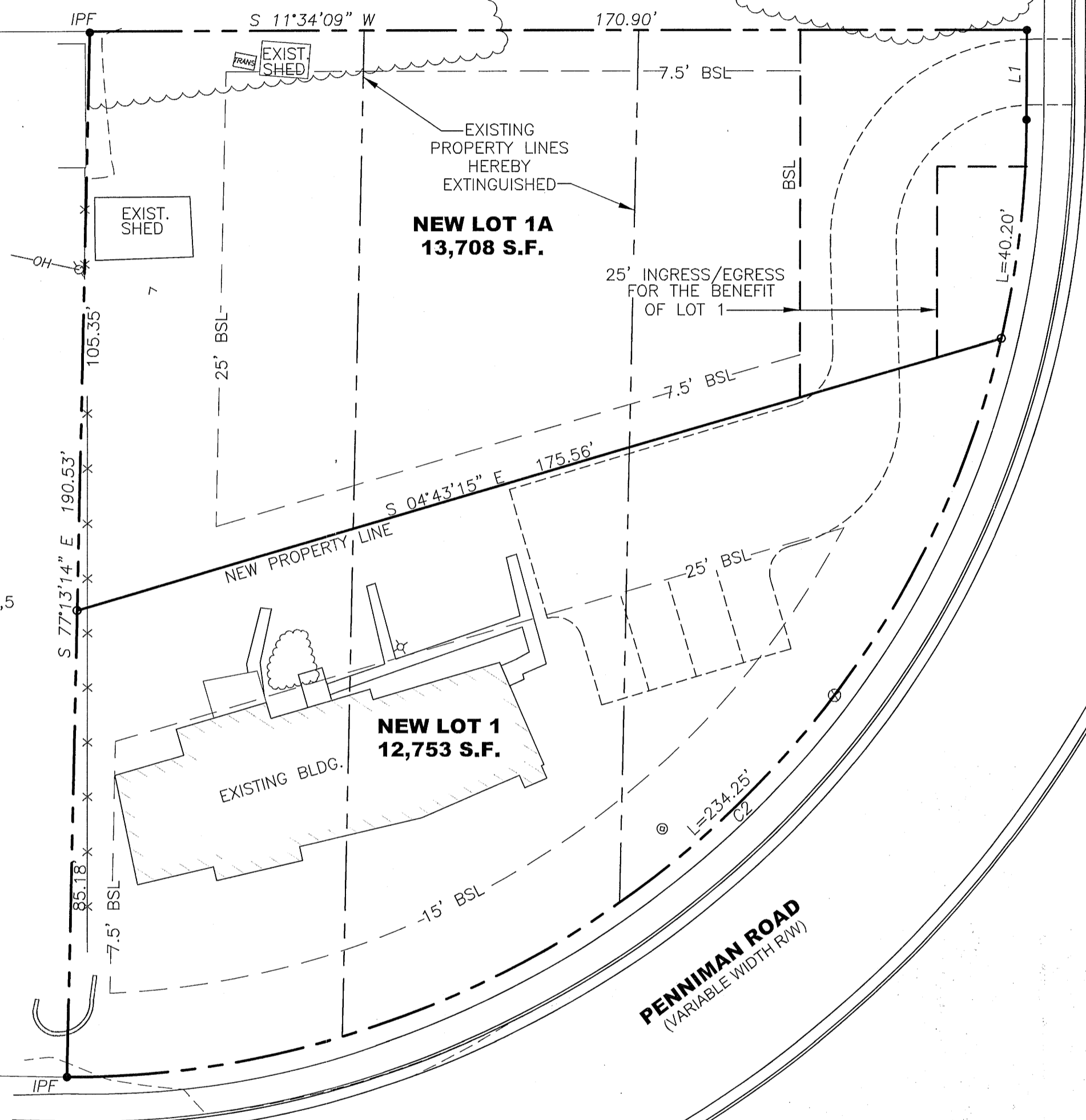
web: landtechresources.com

SHEET 2 OF 2



N/F
BLUEGREEN VACATIONS
UNLIMITED, INC.
PID#468-04-01-015

N/F
ROGER R. ROGERS &
KYRA A. COOK
PID#469-02-00-004,5



PENNINGAN ROAD
(VARIABLE WIDTH R/W)

LINE	BEARING	DISTANCE			
L1	S 78°13'41" E	16.41'			
CURVE	ARC LENGTH	RADIUS	DELTA ANGLE	CHORD BEARING	CHORD LENGTH
C2	274.45'	173.99'	90°22'42"	N 33°19'47" W	246.87'

- LEGEND**
- ⊙ SEWER CLEAN OUT
 - ⊗ WATER VALVE BOX
 - TELEPHONE PEDESTAL
 - ⊕ UTILITY POLE
 - OH- OVERHEAD UTILITY
 - TRANS TRANSFORMER
 - ⊗ LIGHT POLE
 - IPF = IRON PIPE FOUND

City of Williamsburg & County of James City

Circuit Court: This PLAT was recorded on

at 3:01 AM PM PB PG

Document # 20231255

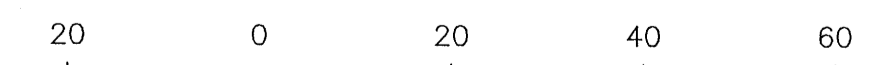
MONA A. FOLEY, CLERK

Mona A. Foley, Clerk

2 Large/Small Plat(s) Recorded

herewith as # 20231255

GRAPHIC SCALE



Scale: 1" = 20'