

202312239

SUBDIVISION PLAT
OF
PARCEL ID #0640100001A
LA GRANGE TRACT
(INSTR#202302699)

STONEHOUSE DISTRICT JAMES CITY COUNTY VIRGINIA

DATE: 8/10/2023

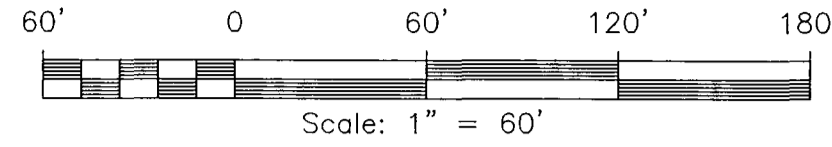
JOB # 23-162

SHEET 5 OF 6

JCC-S-23-0025

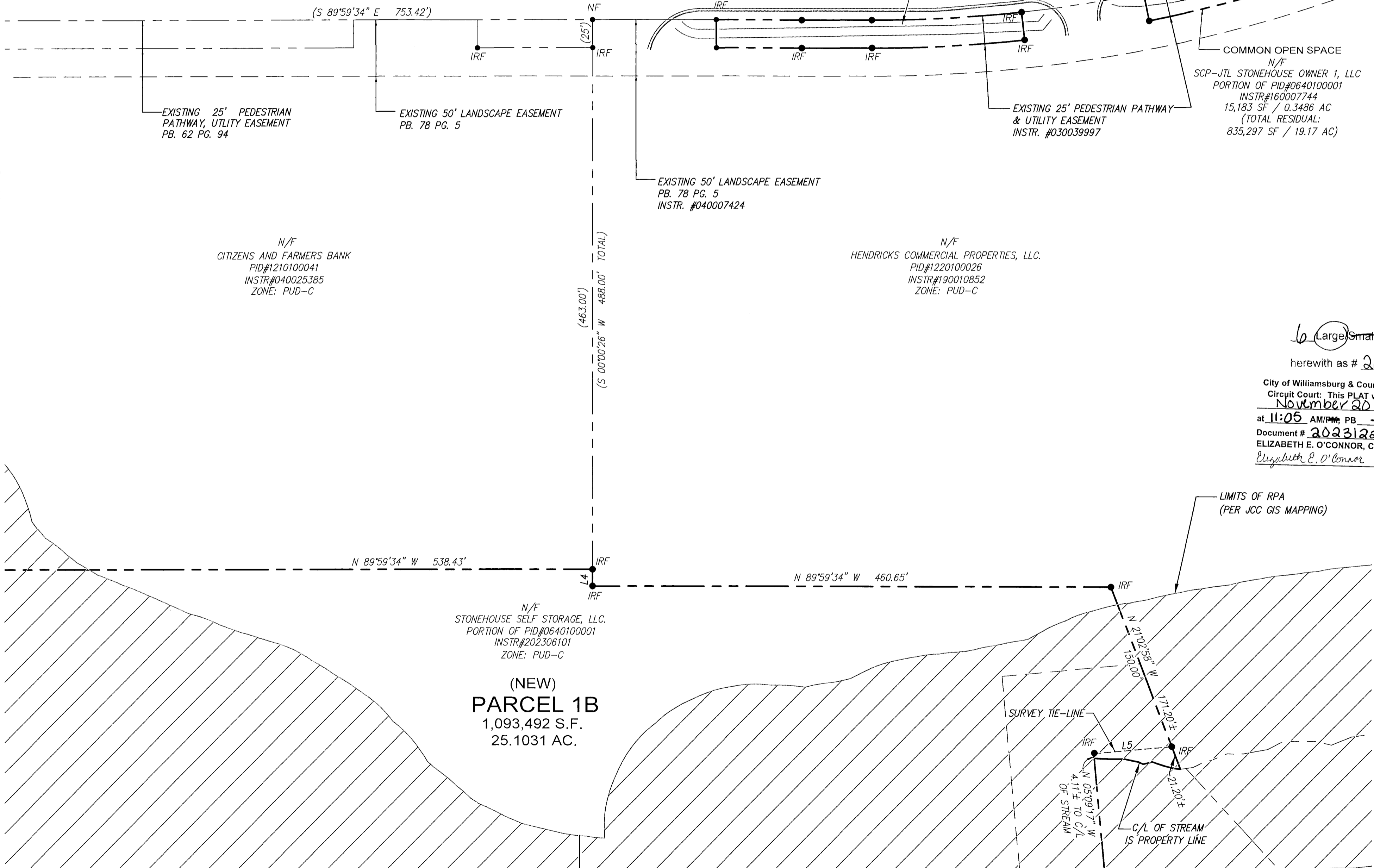


205E Bulifants Blvd., Williamsburg, VA 23188
Ph: (757) 565-1677 Fax: (757) 565-0782
web: landtechresources.com



VIRGINIA COORDINATE SYSTEM
1983 (SOUTH ZONE)

LA GRANGE PARKWAY (100' R/W)
(P.B. 62 PG. 94-96, INSTR.#030010861)



MATCHLINE - SEE SHEET 3

MATCHLINE - SEE SHEET 4

MATCHLINE - SEE SHEET 6

6 Large Small Plat(s) Recorded
herewith as # 202312239

City of Williamsburg & County of James City
Circuit Court: This PLAT was recorded on
November 20, 2023
at 11:05 AM/PM PB PG
Document # 202312239
ELIZABETH E. O'CONNOR, CLERK
Elizabeth E. O'Connor, Clerk