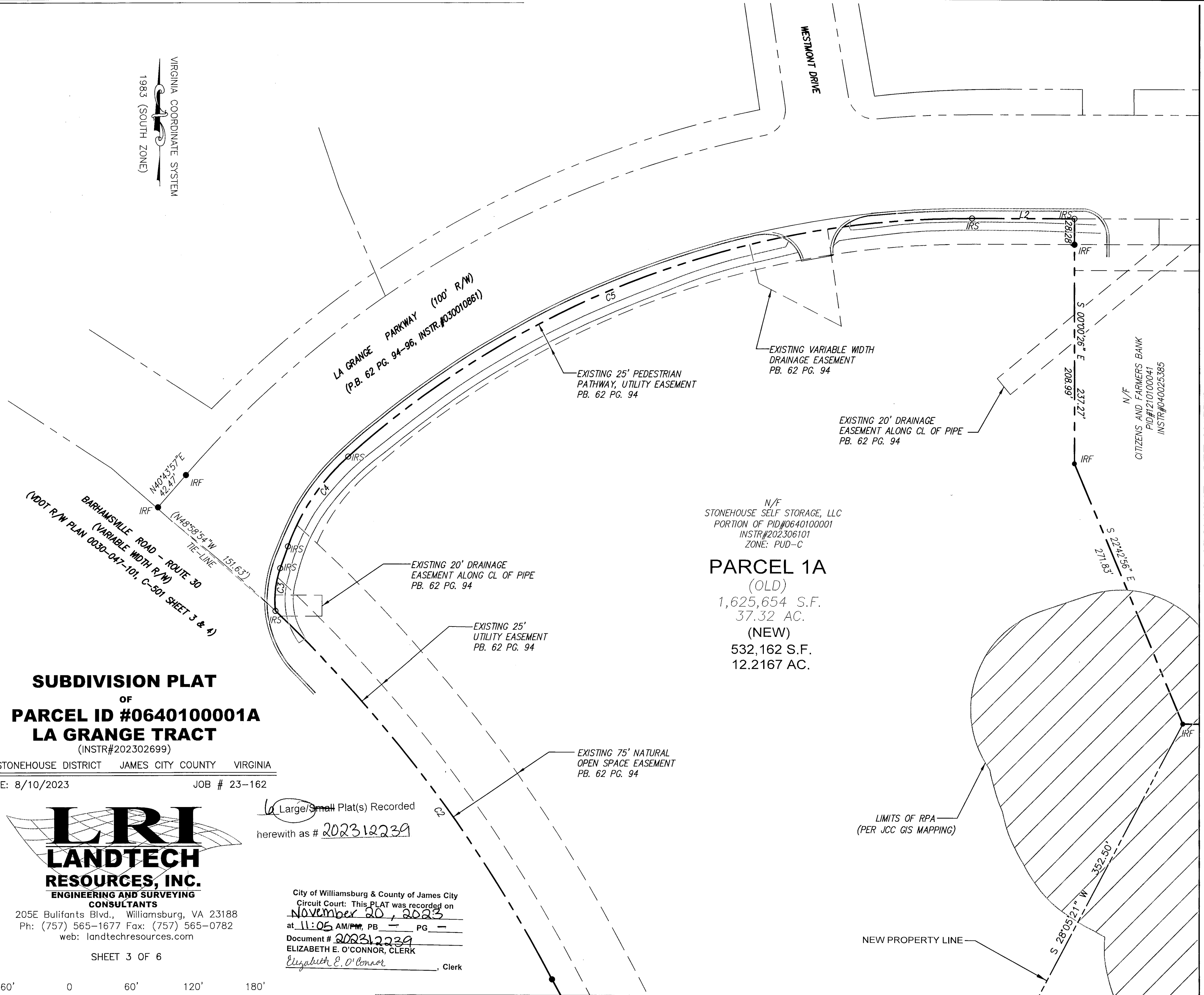


202312239

VIRGINIA COORDINATE SYSTEM
1983 (SOUTH ZONE)



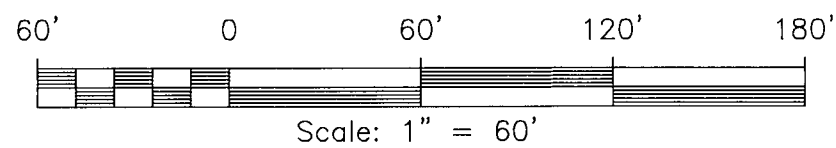
SUBDIVISION PLAT
OF
PARCEL ID #0640100001A
LA GRANGE TRACT
(INSTR#202302699)

STONEHOUSE DISTRICT JAMES CITY COUNTY VIRGINIA
DATE: 8/10/2023 JOB # 23-162

LRI
LANDTECH
RESOURCES, INC.
ENGINEERING AND SURVEYING
CONSULTANTS

205E Bulifants Blvd., Williamsburg, VA 23188
Ph: (757) 565-1677 Fax: (757) 565-0782
web: landtechresources.com

SHEET 3 OF 6



Large/Small Plat(s) Recorded
herewith as # 202312239

City of Williamsburg & County of James City
Circuit Court: This PLAT was recorded on
November 20, 2023
at 11:05 AM/PM, PB PG
Document # 202312239
ELIZABETH E. O'CONNOR, CLERK
Elizabeth E. O'Connor, Clerk

N/F
STONEHOUSE SELF STORAGE, LLC
PORTION OF PID#0640100001
INSTR#202306101
ZONE: PUD-C
PARCEL 1A
(OLD)
1,625,654 S.F.
37.32 AC.
(NEW)
532,162 S.F.
12.2167 AC.

MATCHLINE - SEE SHEET 5

LIMITS OF RPA
(PER JCC GIS MAPPING)

NEW PROPERTY LINE

MATCHLINE - SEE SHEET 4

JCC-S-23-0025