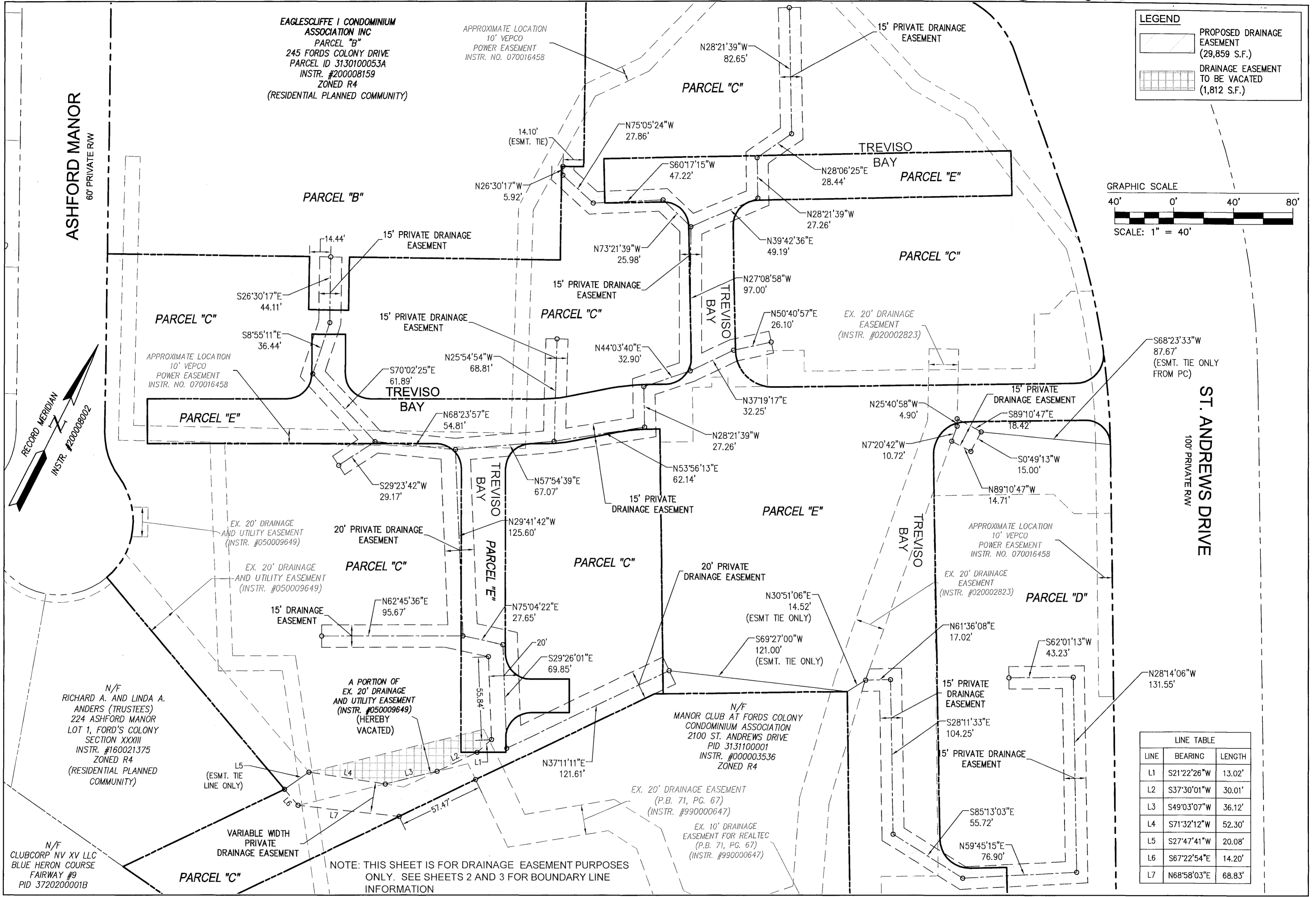
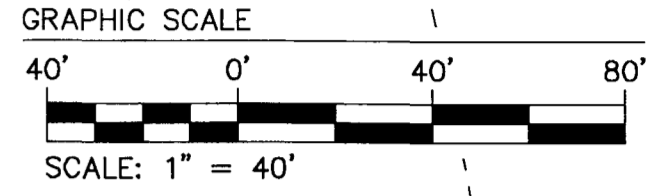


202310816



LEGEND

	PROPOSED DRAINAGE EASEMENT (29,859 S.F.)
	DRAINAGE EASEMENT TO BE VACATED (1,812 S.F.)



LINE TABLE

LINE	BEARING	LENGTH
L1	S21°22'26"W	13.02'
L2	S37°30'01"W	30.01'
L3	S49°03'07"W	36.12'
L4	S71°32'12"W	52.30'
L5	S27°47'41"W	20.08'
L6	S67°22'54"E	14.20'
L7	N68°58'03"E	68.83'

NOTE: THIS SHEET IS FOR DRAINAGE EASEMENT PURPOSES ONLY. SEE SHEETS 2 AND 3 FOR BOUNDARY LINE INFORMATION

City of Williamsburg & County of James City
 Circuit Court: This PLAT was recorded on
October 17, 2023
 at 2:04 AM/PM, PB — PG —
 Document # 202310816
 ELIZABETH E. O'CONNOR, CLERK
Elizabeth E. O'Connor, Clerk

5 Large/Small Plat(s) Recorded
 herewith as # 202310816

Rev.	Date	Description	Revised by



AES
 CONSULTING ENGINEERS
 5248 Old Towne Road, Suite 1
 Williamsburg, Virginia 23188
 Phone: (757) 253-0040
 www.aesva.com

Hampton Roads | Central Virginia | Middle Peninsula

PLAT OF SUBDIVISION AND LOT LINE EXTINGUISHMENT
 1051 SAINT ANDREWS DRIVE,
 1000 EAGLESCLIFFE DRIVE AND
 1101A EAGLESCLIFFE DRIVE
 FORD'S COLONY @ WILLIAMSBURG

DOMINION DISTRICT | JAMES CITY COUNTY | VIRGINIA

Project Contacts: SJB/JFS
 Project Number: W5652-33E
 Scale: 1"=40' Date: 6/14/2023
 Sheet Number
5 OF 5