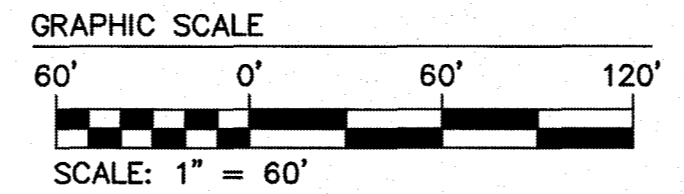


City of Williamsburg & County of James City
Circuit Court: This PLAT was recorded on
May 12, 2023
at 10:13 AM, PB PG
Document # 202304514
MONA A. FOLEY, CLERK

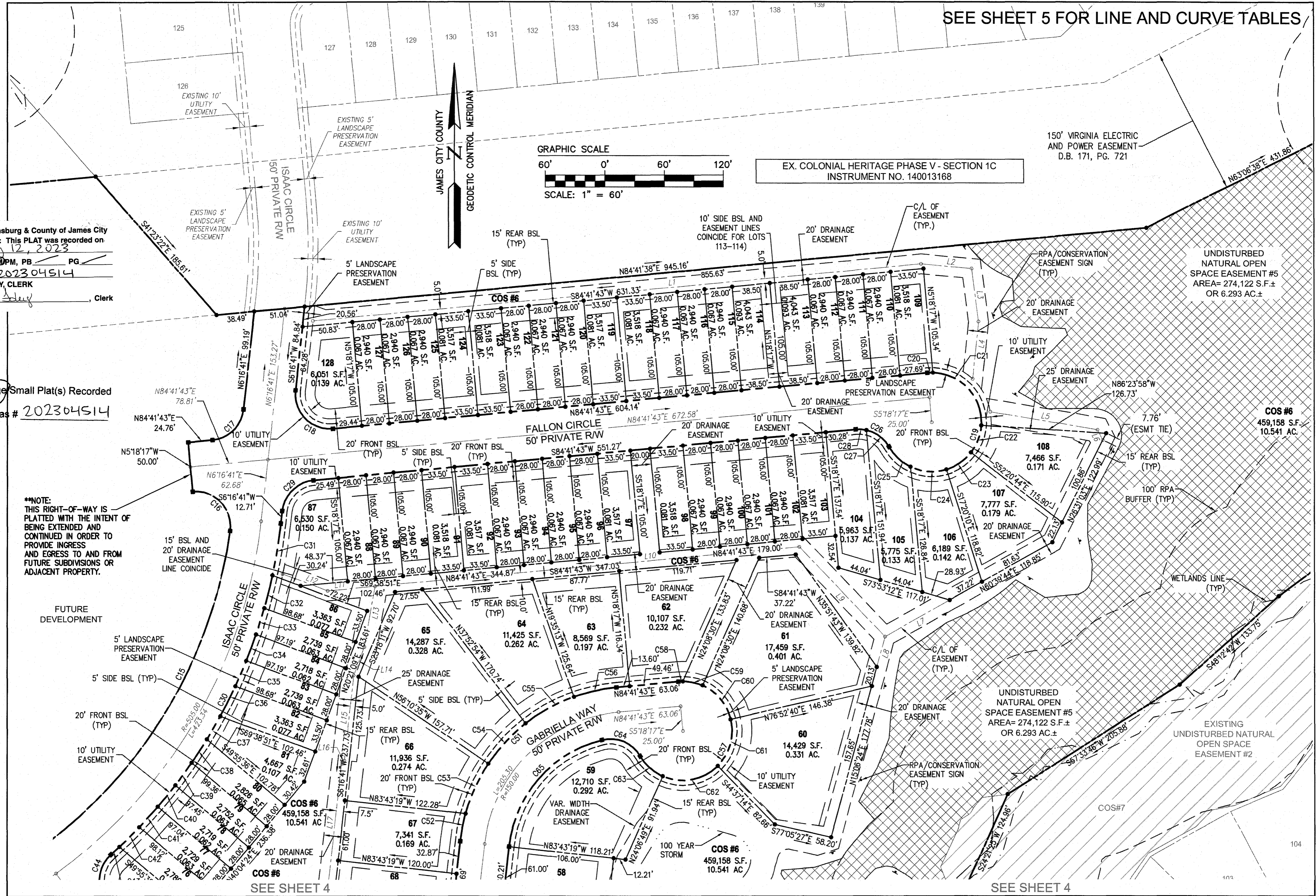


EX. COLONIAL HERITAGE PHASE V - SECTION 1C
INSTRUMENT NO. 140013168

150' VIRGINIA ELECTRIC
AND POWER EASEMENT
D.B. 171, PG. 721

5 Large Small Plat(s) Recorded
herewith as # 202304514

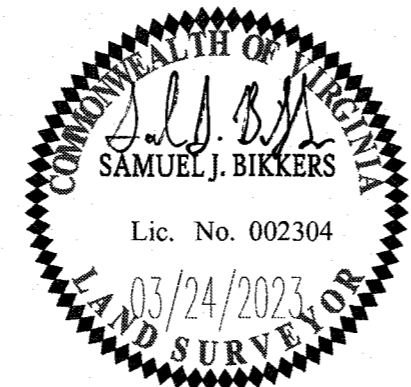
**NOTE:
THIS RIGHT-OF-WAY IS
PLATTED WITH THE INTENT OF
BEING EXTENDED AND
CONTINUED IN ORDER TO
PROVIDE INGRESS
AND EGRESS TO AND FROM
FUTURE SUBDIVISIONS OR
ADJACENT PROPERTY.



SEE SHEET 4

SEE SHEET 4

Rev.	Date	Description	Revised By
1	3/24/23	REVISED PER COUNTY COMMENTS DATED MARCH 21, 2023	JFS



5248 Olde Towne Road, Suite 1
Williamsburg, Virginia 23188
Phone: (757) 253-0040
Fax: (757) 220-8994
www.aesva.com

Hampton Roads | Central Virginia | Middle Peninsula

JCC CASE NO. 9-23-0003

PLAT OF SUBDIVISION
LOTS 43-128 & COS #1, #5 AND #6
**COLONIAL HERITAGE
PHASE V - SECTION 2A**
OWNER / DEVELOPER: COLONIAL HERITAGE, LLC

STONEHOUSE DISTRICT JAMES CITY COUNTY VIRGINIA

Project Contacts: SJB/JFS	
Project Number: 8881-52C	
Scale: 1" = 60'	Date: 01/27/23
Sheet Number	
3 of 5	