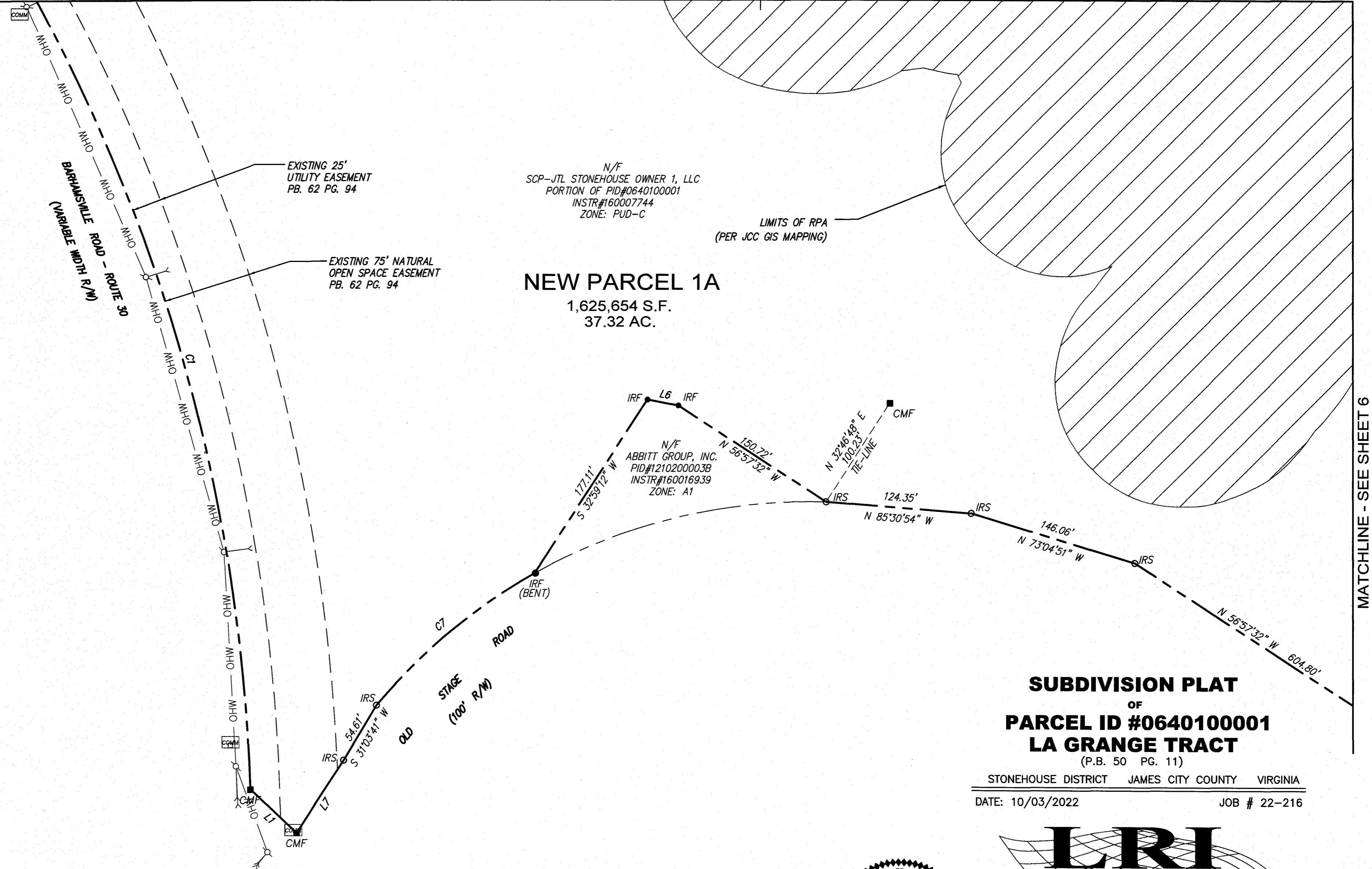


MATCHLINE - SEE SHEET 3

MATCHLINE - SEE SHEET 5

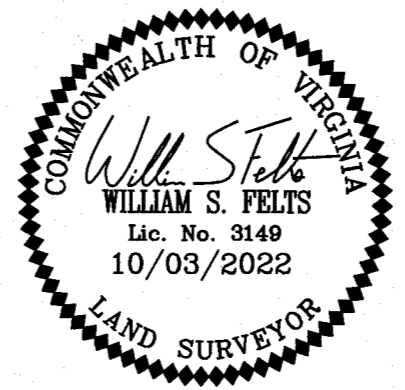
VIRGINIA COORDINATE SYSTEM
1983 (SOUTH ZONE)



SUBDIVISION PLAT
OF
PARCEL ID #0640100001
LA GRANGE TRACT
(P.B. 50 PG. 11)

STONEHOUSE DISTRICT JAMES CITY COUNTY VIRGINIA
DATE: 10/03/2022 JOB # 22-216

LRI LANDTECH RESOURCES, INC.
ENGINEERING AND SURVEYING CONSULTANTS
205E Bulifants Blvd., Williamsburg, VA 23188
Ph: (757) 565-1677 Fax: (757) 565-0782
web: landtechresources.com



9 Large/Small Plat(s) Recorded
herewith as # 202302699
City of Williamsburg & County of James City
Circuit Court: This PLAT was recorded on
MARCH 23RD, 2023
at 8:46 AM/PM, PB PG
Document # 202302699
MONA A. FOLEY, CLERK
Mona A. Foley, Clerk

