

202302256

PLAT OF CORRECTION
SUBDIVISION OF
STONEHOUSE
LAND BAY 5
PHASE 1

LOTS 1 THROUGH 15, 76 THROUGH 92
& M1 THROUGH M43

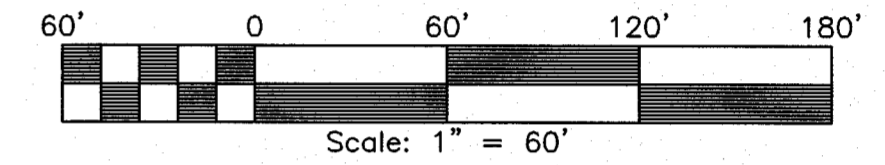
STONEHOUSE DISTRICT JAMES CITY COUNTY VIRGINIA
DATE: 02/13/2023 JOB # 20-224



LandTech
Resources, Inc.
Engineering & Surveying Consultants
205 Bulifants Blvd., Suite E, Williamsburg, Virginia 23188
Phone: (757) 565-1677 Fax: (757) 565-0782
web: landtechresources.com

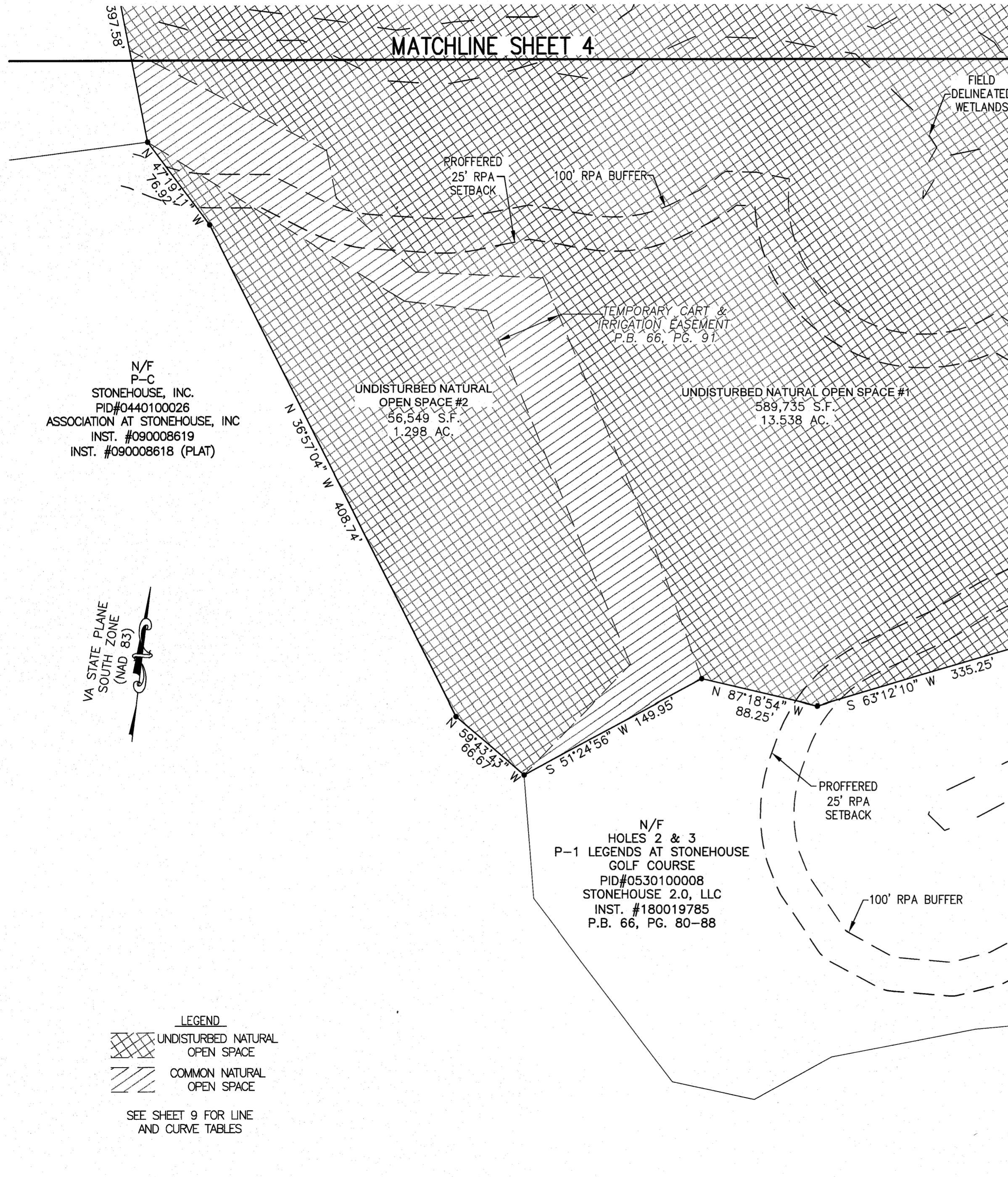
SHEET 6 OF 9

JCC-S-22-0005



9 Large/Small Plat(s) Recorded
herewith as # 202302256

City of Williamsburg & County of James City
Circuit Court: This PLAT was recorded on
March 9, 2023
at 8:51 AM PM, PG
Document # 202302256
MONA A. FOLEY, CLERK
Mona A. Foley, Clerk



LEGEND
[Cross-hatched box] UNDISTURBED NATURAL OPEN SPACE
[Diagonal hatched box] COMMON NATURAL OPEN SPACE
SEE SHEET 9 FOR LINE AND CURVE TABLES