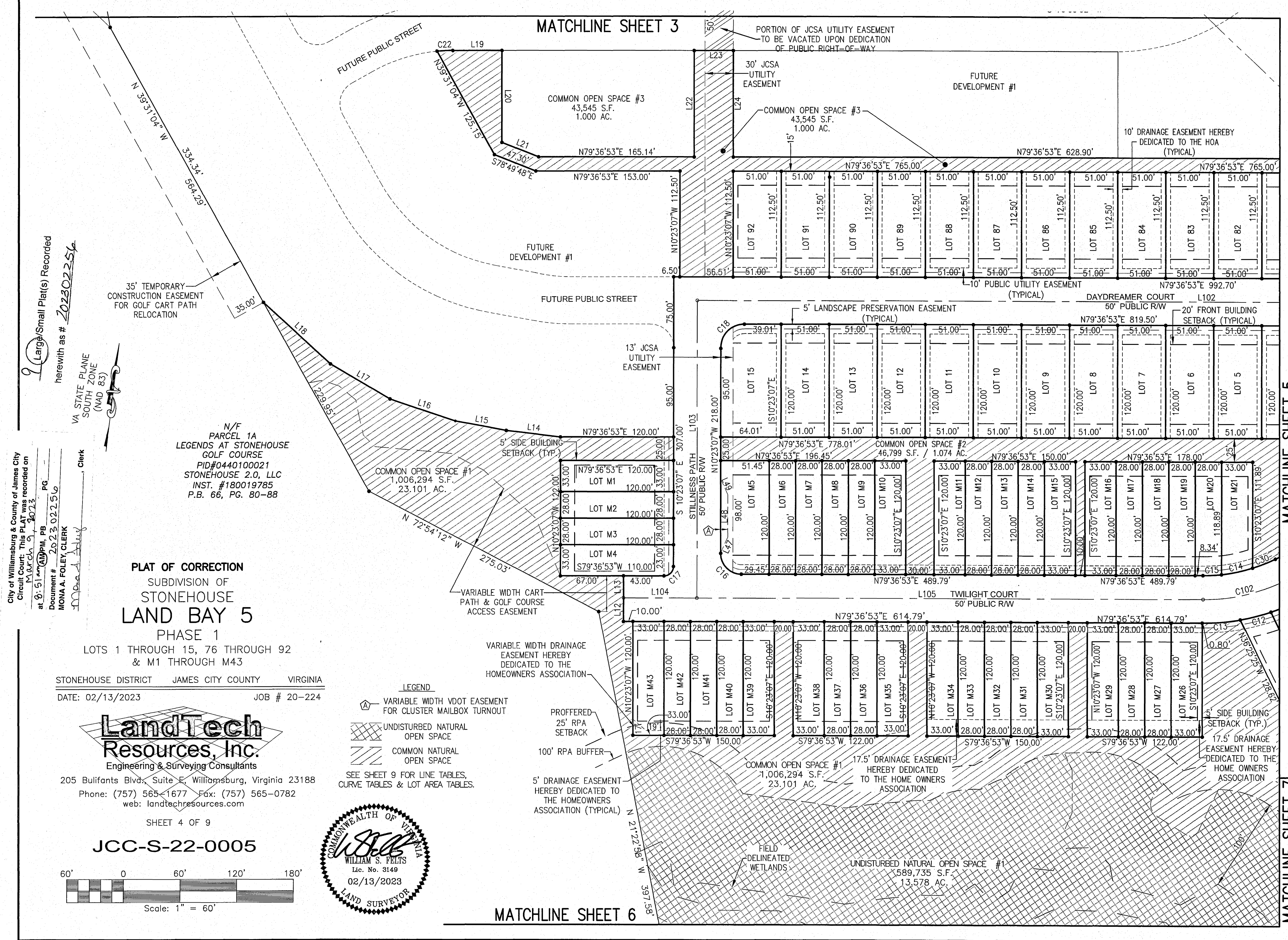


202302256

MATCHLINE SHEET 3

MATCHLINE SHEET 5

MATCHLINE SHEET 7



**PLAT OF CORRECTION**  
 SUBDIVISION OF  
**STONEHOUSE**  
**LAND BAY 5**  
 PHASE 1

LOTS 1 THROUGH 15, 76 THROUGH 92  
 & M1 THROUGH M43

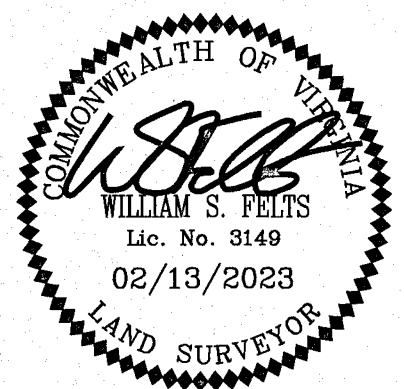
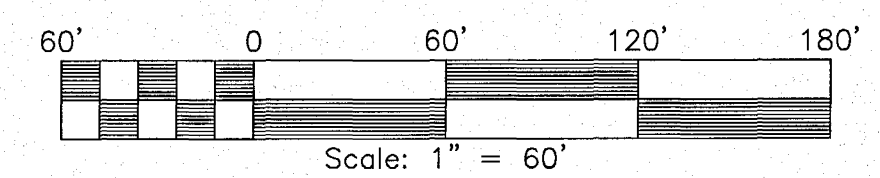
STONEHOUSE DISTRICT JAMES CITY COUNTY VIRGINIA  
 DATE: 02/13/2023 JOB # 20-224



205 Bulifants Blvd., Suite E, Williamsburg, Virginia 23188  
 Phone: (757) 565-1677 Fax: (757) 565-0782  
 web: landtechresources.com

SHEET 4 OF 9

**JCC-S-22-0005**



MATCHLINE SHEET 6

City of Williamsburg & County of James City  
 Circuit Court: This PLAT was recorded on  
 March 9, 2023  
 at 9:51 AM, PB PG  
 Document # 2023-02256  
 MONA A. FOLEY, CLERK

Large Small Plat(s) Recorded  
 herewith as # 202302256



35' TEMPORARY  
 CONSTRUCTION EASEMENT  
 FOR GOLF CART PATH  
 RELOCATION

N/F  
 PARCEL 1A  
 LEGENDS AT STONEHOUSE  
 GOLF COURSE  
 PID#0440100021  
 STONEHOUSE 2.0, LLC  
 INST. #180019785  
 P.B. 66, PG. 80-88

- LEGEND**
- VARIABLE WIDTH VDOT EASEMENT FOR CLUSTER MAILBOX TURNOUT
  - UNDISTURBED NATURAL OPEN SPACE
  - COMMON NATURAL OPEN SPACE

- PROFFERED 25' RPA SETBACK
- 100' RPA BUFFER
- 5' DRAINAGE EASEMENT HEREBY DEDICATED TO THE HOMEOWNERS ASSOCIATION (TYPICAL)
- VARIABLE WIDTH DRAINAGE EASEMENT HEREBY DEDICATED TO THE HOMEOWNERS ASSOCIATION

SEE SHEET 9 FOR LINE TABLES, CURVE TABLES & LOT AREA TABLES.