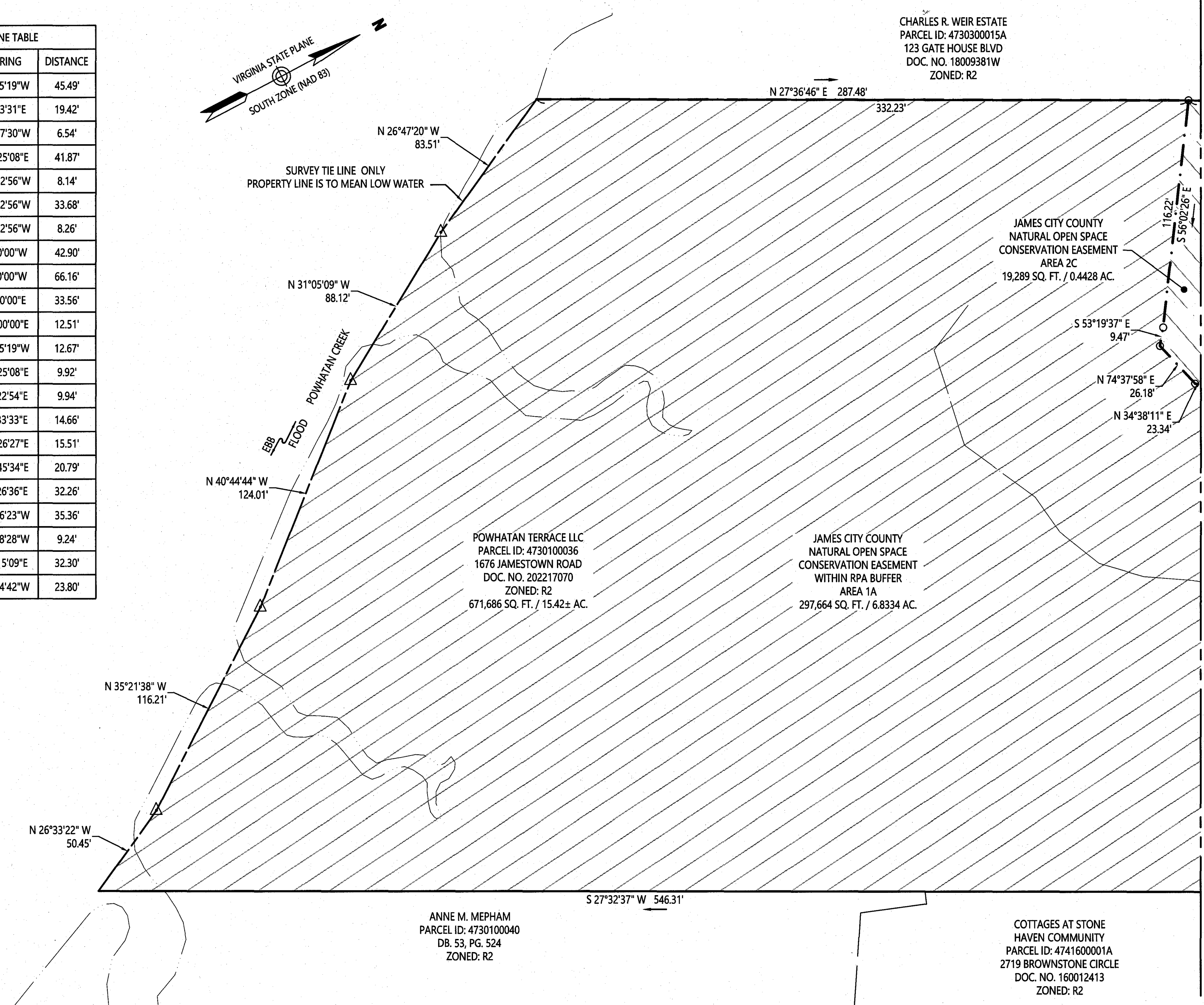


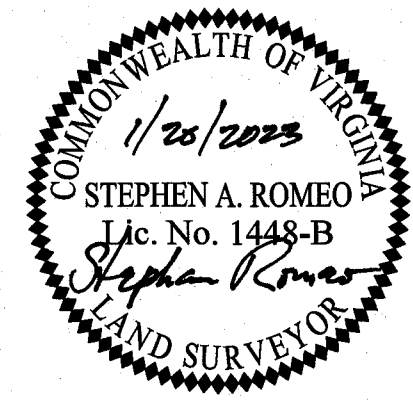
202302104

LINE	BEARING	DISTANCE
L1	S13°25'19"W	45.49'
L2	N0°23'31"E	19.42'
L3	N28°47'30"W	6.54'
L4	N12°25'08"E	41.87'
L5	N62°22'56"W	8.14'
L6	N62°22'56"W	33.68'
L7	N62°22'56"W	8.26'
L8	S5°00'00"W	42.90'
L9	S5°00'00"W	66.16'
L10	N5°00'00"E	33.56'
L11	N36°00'00"E	12.51'
L12	S13°25'19"W	12.67'
L13	N12°25'08"E	9.92'
L14	S62°22'54"E	9.94'
L15	S77°33'33"E	14.66'
L16	N12°26'27"E	15.51'
L17	N65°45'34"E	20.79'
L18	S60°26'36"E	32.26'
L19	S59°06'23"W	35.36'
L20	S24°48'28"W	9.24'
L21	S10°15'09"E	32.30'
L22	S32°34'42"W	23.80'



City of Williamsburg & County of James City
 Circuit Court: This PLAT was recorded on
 March 7, 2023
 at 2:43 AM/PM PB PG
 Document # 202302104
 MONA A. FOLEY, CLERK
 Maria A. Foley, Clerk

4 Large/Small Plat(s) Recorded
 herewith as # 202302104



**Natural Open Space Easement
 Being The Property Of
 Powhatan Terrace LLC
 Parcel 4730100036**

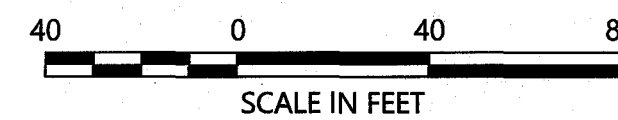
James City County, Virginia

DATE: 1/20/2023	SHEET 2 OF 4	SCALE: 1"=40'
PROJECT NO: 34445.01	DRAWN BY: CRO	CHECKED BY: SAR

NUMBER	RADIUS	LENGTH	DELTA	TANGENT	CHORD BEARING	CHORD
C1	100.00'	79.44'	45°30'47"	41.95'	N13°18'13"W	77.36'
C2	100.00'	18.39'	10°32'14"	9.22'	N8°56'11"W	18.36'
C3	100.00'	6.87'	3°56'14"	3.44'	N78°11'07"E	6.87'
C4	100.00'	177.03'	101°25'51"	122.24'	S49°07'50"E	154.80'
C5	100.00'	4.06'	2°19'27"	2.03'	S64°23'21"E	4.06'
C6	100.00'	43.51'	24°55'46"	22.10'	N51°04'10"E	43.17'
C7	219.00'	5.55'	1°27'04"	2.77'	S64°03'42"E	5.55'
C8	10.43'	13.34'	73°18'48"	7.76'	S0°24'49"W	12.45'
C9	56.89'	36.25'	36°30'23"	18.76'	S18°49'01"W	35.64'

NUMBER	RADIUS	LENGTH	DELTA	TANGENT	CHORD BEARING	CHORD
C10	88.62'	46.37'	29°58'49"	23.73'	S0°02'23"E	45.85'
C11	58.10'	46.04'	45°23'59"	24.30'	S76°26'57"E	44.84'
C12	10.53'	20.96'	114°03'00"	16.23'	S30°32'26"E	17.67'
C13	54.10'	68.71'	72°45'56"	39.86'	S9°53'54"E	64.19'
C14	58.58'	58.56'	57°16'36"	31.99'	N70°05'24"E	56.15'
C15	158.58'	44.86'	16°12'24"	22.58'	N42°18'32"E	44.71'
C16	77.93'	56.44'	41°30'05"	29.52'	N22°30'21"E	55.22'
C17	12.87'	15.57'	69°18'09"	8.89'	N59°10'23"E	14.63'
C18	19.55'	20.42'	59°51'27"	11.25'	N0°40'49"W	19.50'

NUMBER	RADIUS	LENGTH	DELTA	TANGENT	CHORD BEARING	CHORD
C19	36.43'	24.83'	39°03'19"	12.92'	N44°07'49"E	24.35'
C20	19.44'	9.48'	27°55'36"	4.83'	N44°10'56"E	9.38'
C21	50.00'	23.91'	27°24'03"	12.19'	S37°16'08"E	23.68'
C22	34.76'	15.51'	25°34'14"	7.89'	S20°06'05"W	15.38'
C23	37.54'	15.56'	23°45'26"	7.90'	S24°58'05"W	15.45'
C24	53.17'	29.62'	31°54'59"	15.20'	S53°01'15"W	29.24'
C25	87.00'	46.51'	30°37'37"	23.82'	S21°44'57"W	45.96'



vhb Transportation Land Development Environmental Services
 351 McLaws Circle, Suite 3
 Williamsburg, Virginia 23185
 757 220 0500
 FAX 757 903 2794