

202301316

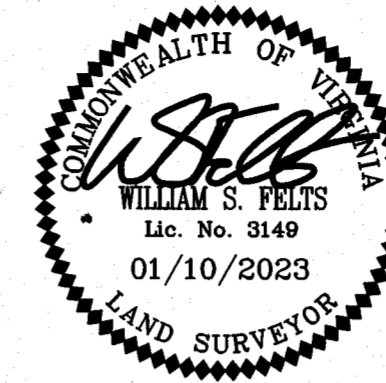
SUBDIVISION OF
STONEHOUSE
LAND BAY 5
PHASE 1

LOTS 1 THROUGH 15, 76 THROUGH 92
& M1 THROUGH M43

STONEHOUSE DISTRICT, JAMES CITY COUNTY VIRGINIA

DATE: 01/10/2023

JOB # 20-224



LandTech
Resources, Inc.

Engineering & Surveying Consultants

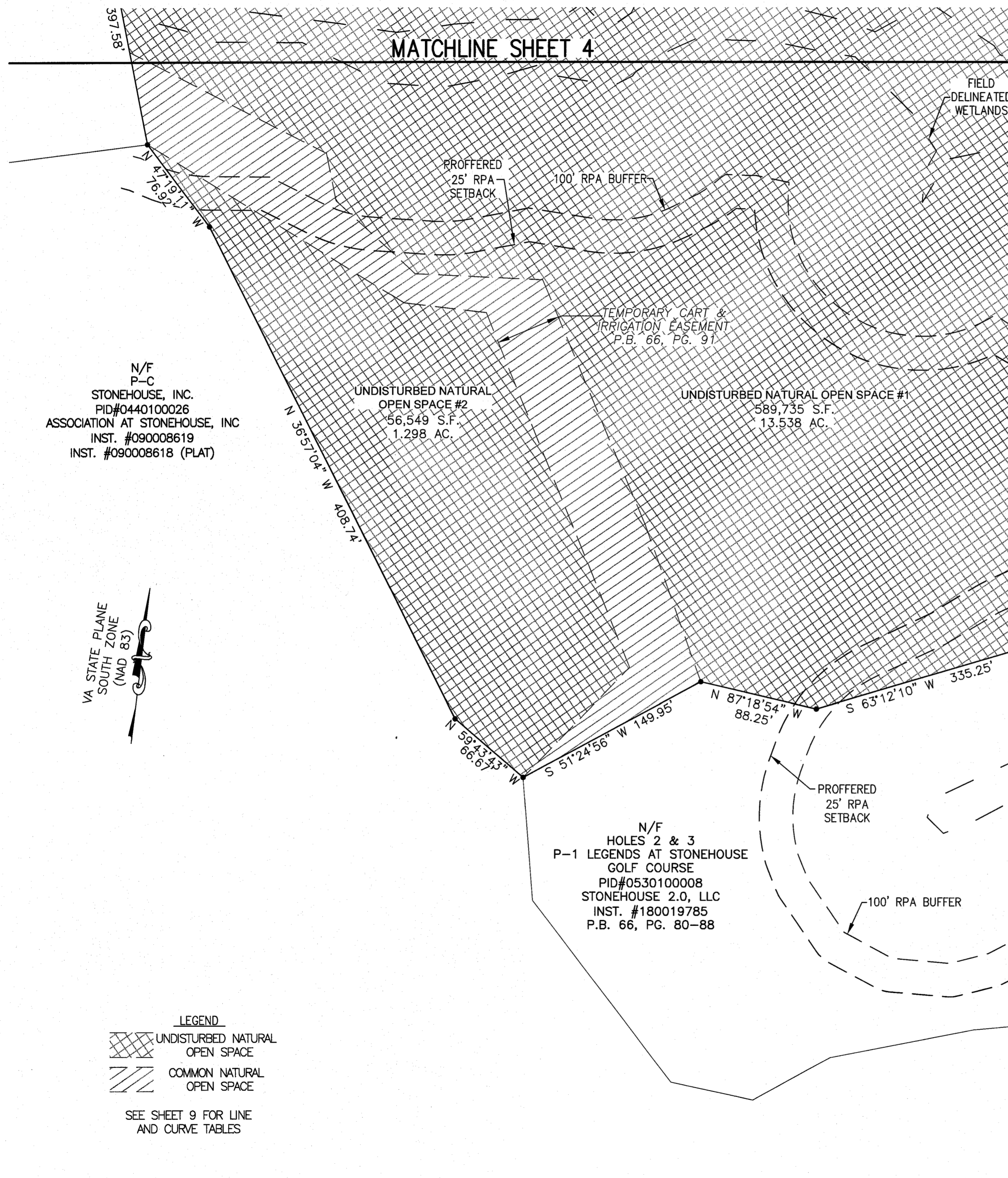
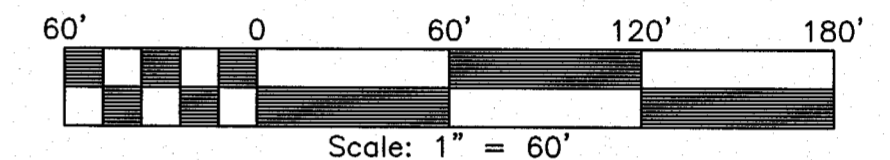
205 Bulifants Blvd., Suite E, Williamsburg, Virginia 23188

Phone: (757) 565-1677 Fax: (757) 565-0782

web: landtechresources.com

SHEET 6 OF 9

JCC-S-22-0005



N/F
P-C
STONEHOUSE, INC.
PID#0440100026
ASSOCIATION AT STONEHOUSE, INC
INST. #090008619
INST. #090008618 (PLAT)



LEGEND
[Cross-hatched box] UNDISTURBED NATURAL OPEN SPACE
[Diagonal hatched box] COMMON NATURAL OPEN SPACE

SEE SHEET 9 FOR LINE AND CURVE TABLES

9 Large/Small Plat(s) Recorded
herewith as # 202301316

City of Williamsburg & County of James City
Circuit Court: This PLAT was recorded on
Feb. 6, 2023
at 8:57 AM, PB _____ PG _____
Document # 202301316
MONA A. FOLEY, CLERK
Mona A. Foley, Clerk