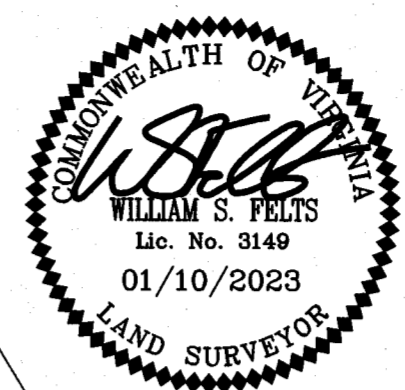


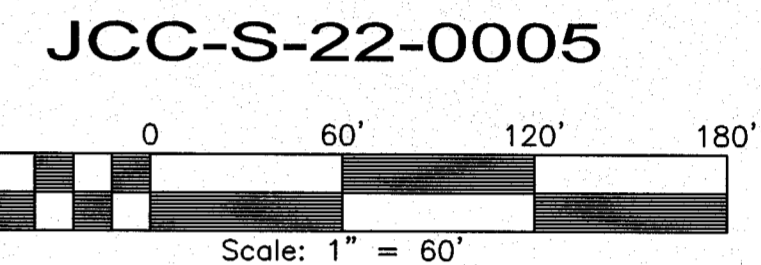
SUBDIVISION OF  
STONEHOUSE  
LAND BAY 5  
PHASE 1

LOTS 1 THROUGH 15, 76 THROUGH 92  
& M1 THROUGH M43  
STONEHOUSE DISTRICT JAMES CITY COUNTY VIRGINIA  
DATE: 01/10/2023 JOB # 20-224

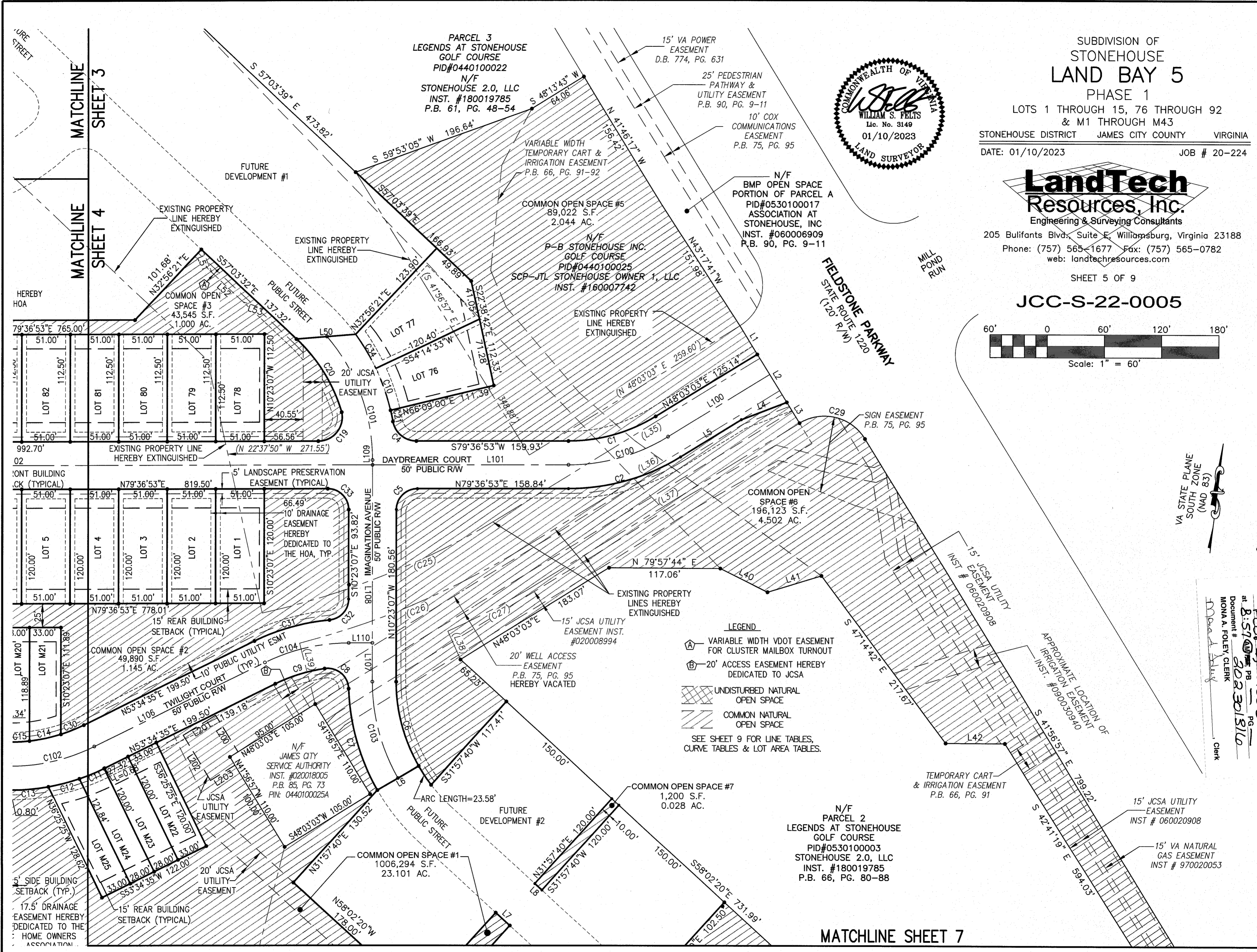


**LandTech**  
Resources, Inc.

Engineering & Surveying Consultants  
205 Bulfants Blvd., Suite E, Williamsburg, Virginia 23188  
Phone: (757) 565-1677 Fax: (757) 565-0782  
web: landtechresources.com



SHEET 5 OF 9  
JCC-S-22-0005



- LEGEND**
- (A) VARIABLE WIDTH VDOT EASEMENT FOR CLUSTER MAILBOX TURNOUT
  - (B) 20' ACCESS EASEMENT HEREBY DEDICATED TO JCSA
  - UNDISTURBED NATURAL OPEN SPACE
  - COMMON NATURAL OPEN SPACE
- SEE SHEET 9 FOR LINE TABLES, CURVE TABLES & LOT AREA TABLES.

herewith as # 202301316  
Larger/Small Plats Recorded

City of Williamsburg & County of James City  
Circuit Court: This PLAT was recorded on  
Feb 06, 2023  
at 8:57 AM, PG. 8023  
Document # 202301316  
MONA A. FOLEY, CLERK  
Clerk