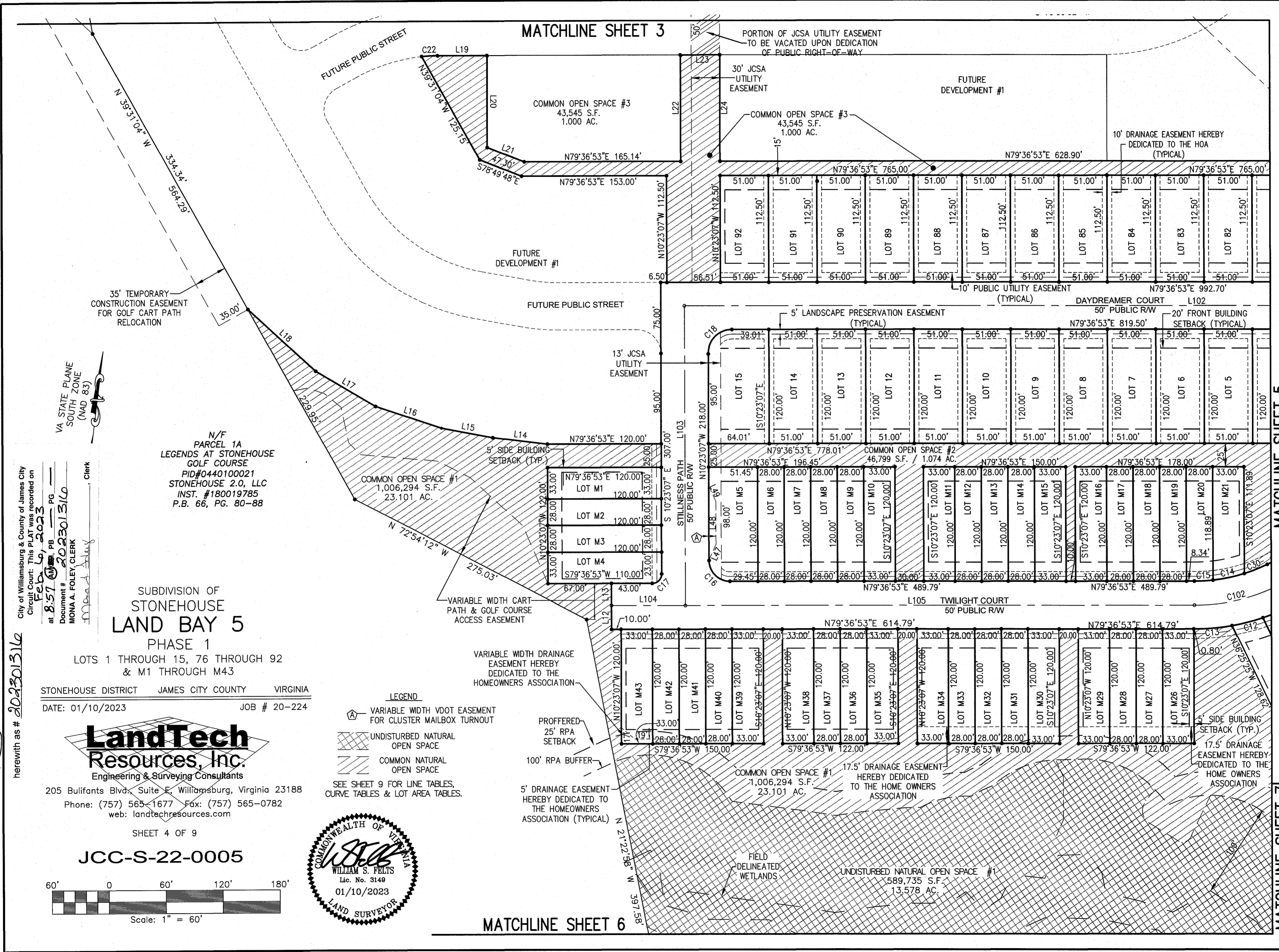


MATCHLINE SHEET 3

MATCHLINE SHEET 5

MATCHLINE SHEET 7



City of Williamsburg & County of James City
 Circuit Court: This PLAT was recorded on
Feb 10, 2023
 at 8:57 AM, PB PG
 Document # **202301316**
 MONA A. FOLEY, CLERK

N/F
 PARCEL 1A
 LEGENDS AT STONEHOUSE
 GOLF COURSE
 PID#0440100021
 STONEHOUSE 2.0, LLC
 INST. #180019785
 P.B. 66, PG. 80-88

SUBDIVISION OF
**STONEHOUSE
 LAND BAY 5**
 PHASE 1

LOTS 1 THROUGH 15, 76 THROUGH 92
 & M1 THROUGH M43

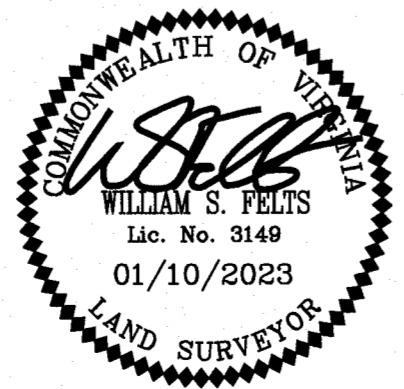
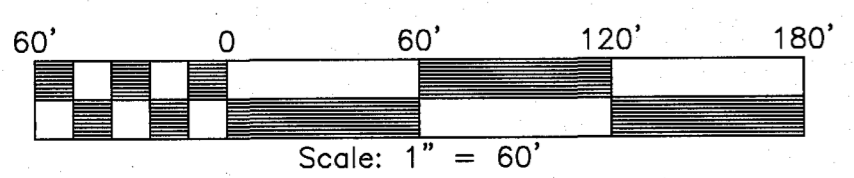
STONEHOUSE DISTRICT JAMES CITY COUNTY VIRGINIA
 DATE: 01/10/2023 JOB # 20-224

LandTech
Resources, Inc.
 Engineering & Surveying Consultants

205 Bulifants Blvd., Suite E, Williamsburg, Virginia 23188
 Phone: (757) 565-1677 Fax: (757) 565-0782
 web: landtechresources.com

SHEET 4 OF 9

JCC-S-22-0005



MATCHLINE SHEET 6

- LEGEND**
- VARIABLE WIDTH VDOT EASEMENT FOR CLUSTER MAILBOX TURNOUT
 - UNDISTURBED NATURAL OPEN SPACE
 - COMMON NATURAL OPEN SPACE

- PROFFERED 25' RPA SETBACK
- 100' RPA BUFFER
- 5' DRAINAGE EASEMENT HEREBY DEDICATED TO THE HOMEOWNERS ASSOCIATION (TYPICAL)
- VARIABLE WIDTH DRAINAGE EASEMENT HEREBY DEDICATED TO THE HOMEOWNERS ASSOCIATION

SEE SHEET 9 FOR LINE TABLES, CURVE TABLES & LOT AREA TABLES.