

202301316

SUBDIVISION OF
STONEHOUSE
LAND BAY 5

PHASE 1
LOTS 1 THROUGH 15, 76 THROUGH 92
& M1 THROUGH M43

STONEHOUSE DISTRICT JAMES CITY COUNTY VIRGINIA
DATE: 01/10/2023 JOB # 20-224

LandTech
Resources, Inc.

Engineering & Surveying Consultants
205 Bulifants Blvd., Suite E, Williamsburg, Virginia 23188
Phone: (757) 565-1677 Fax: (757) 565-0782
web: landtechresources.com



LEGEND
[Cross-hatched pattern] UNDISTURBED NATURAL OPEN SPACE
[Diagonal line pattern] COMMON NATURAL OPEN SPACE
SEE SHEET 9 FOR LINE AND CURVE TABLES

9 Large/Small Plat(s) Recorded
herewith as # 202301316

City of Williamsburg & County of James City
Circuit Court: This PLAT was recorded on
Feb. 6, 2023
at 8:57 AM PM PB PG
Document # 202301316
MONA A. FOLEY, CLERK
Mona Foley, Clerk

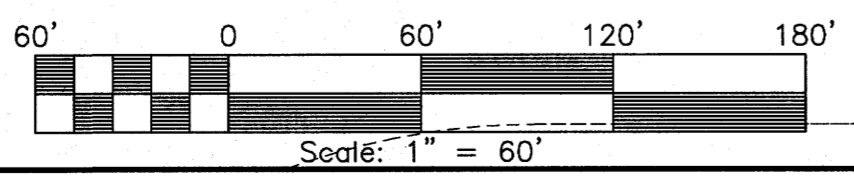
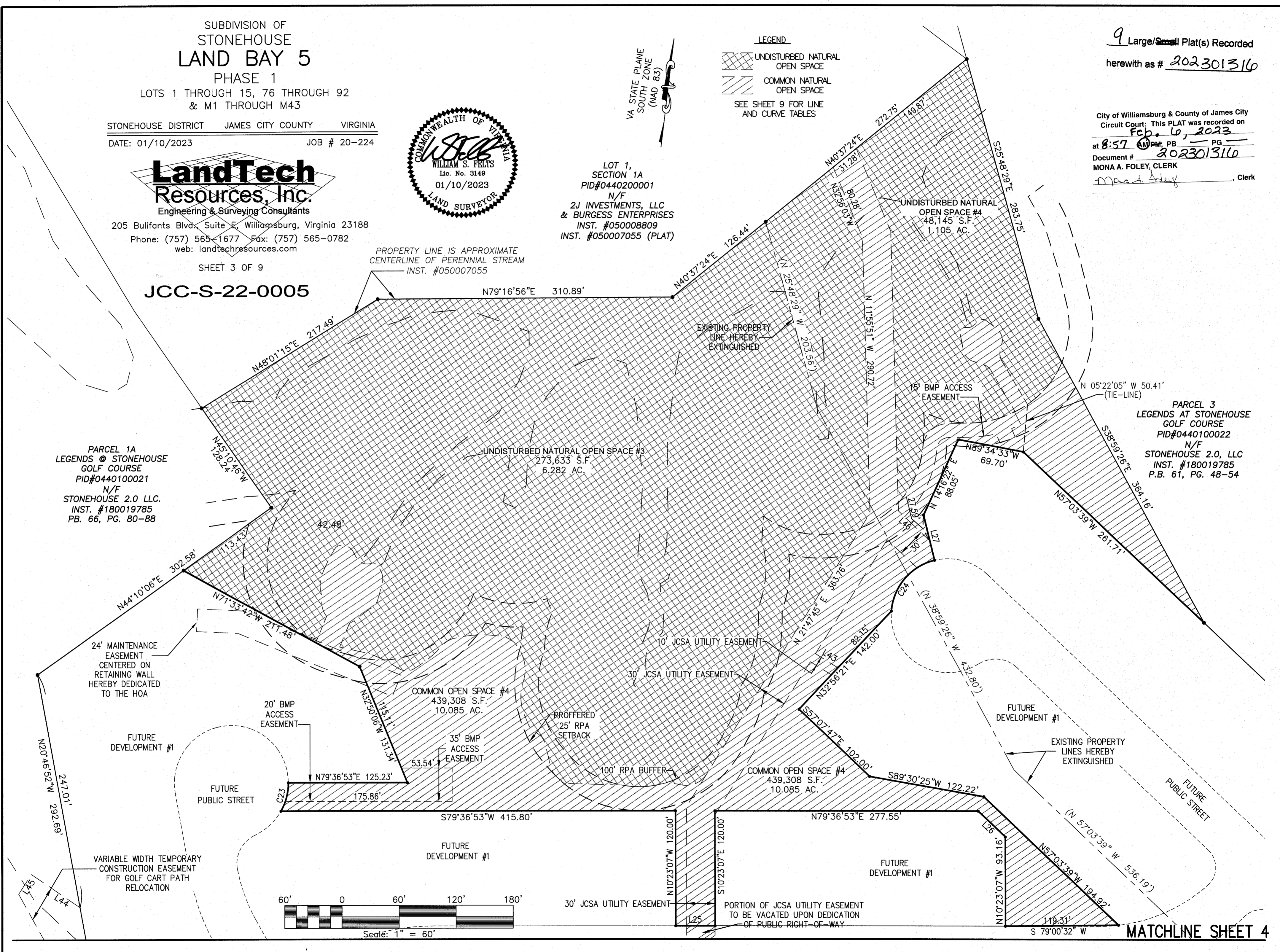
LOT 1,
SECTION 1A
PID#0440200001
N/F
2J INVESTMENTS, LLC
& BURGESS ENTERPRISES
INST. #050008809
INST. #050007055 (PLAT)

SHEET 3 OF 9
JCC-S-22-0005

PROPERTY LINE IS APPROXIMATE
CENTERLINE OF PERENNIAL STREAM
INST. #050007055

PARCEL 1A
LEGENDS @ STONEHOUSE
GOLF COURSE
PID#0440100021
N/F
STONEHOUSE 2.0 LLC.
INST. #180019785
PB. 66, PG. 80-88

PARCEL 3
LEGENDS AT STONEHOUSE
GOLF COURSE
PID#0440100022
N/F
STONEHOUSE 2.0, LLC
INST. #180019785
P.B. 61, PG. 48-54



MATCHLINE SHEET 4