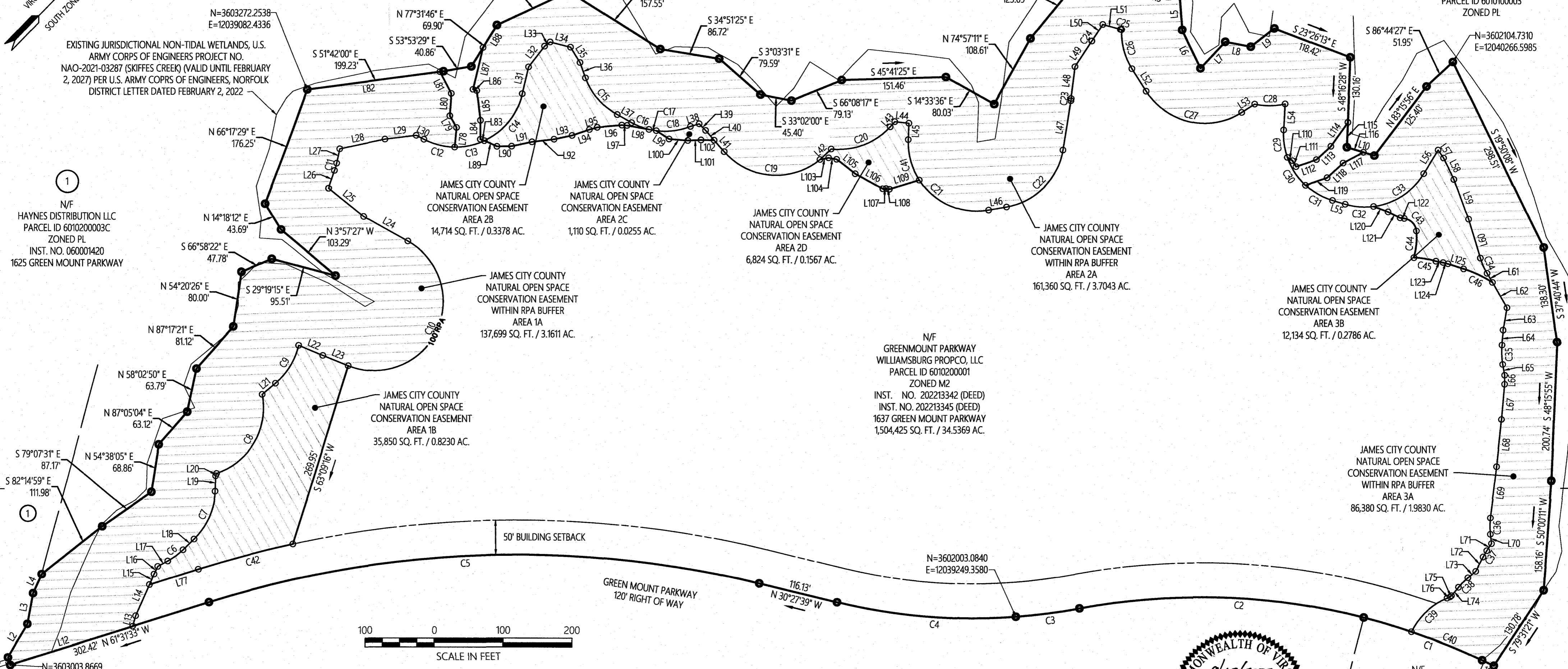
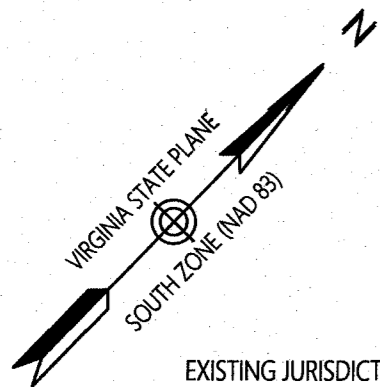


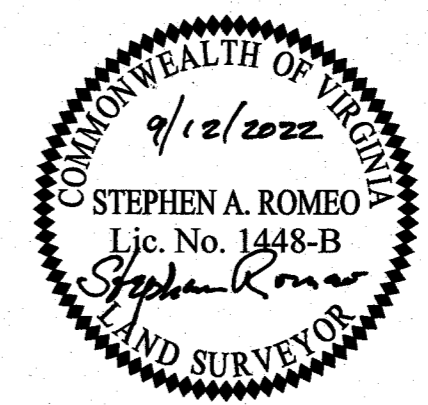
202301181

City of Williamsburg & County of James City
 Circuit Court: This PLAT was recorded on
 at 8:51 AM PM, PB PG
 Document # 202301181
 MONA A. FOLEY, CLERK
 Clerk

4 Large/Small Plat(s) Recorded
 herewith as # 202301181



LINE	BEARING	DISTANCE	LINE	BEARING	DISTANCE	LINE	BEARING	DISTANCE	LINE	BEARING	DISTANCE	LINE	BEARING	DISTANCE	LINE	BEARING	DISTANCE	LINE	BEARING	DISTANCE			
L1	N28°28'27"E	11.65'	L17	S72°20'34"E	16.52'	L33	S80°29'02"E	9.96'	L49	N79°10'04"E	43.98'	L65	S35°38'51"W	15.93'	L81	S18°30'45"W	35.39'	L97	S41°21'16"E	7.79'	L113	S87°08'58"E	28.35'
L2	N76°27'30"E	55.66'	L18	S88°05'46"E	22.24'	L34	S30°24'29"E	30.64'	L50	N78°58'38"E	28.07'	L66	S46°08'15"W	13.30'	L82	S51°42'00"E	194.08'	L98	S33°48'40"E	32.14'	L114	N81°37'49"E	42.35'
L3	N56°20'21"E	45.28'	L19	N47°22'28"E	22.06'	L35	S13°50'34"W	26.16'	L51	S29°20'41"E	26.78'	L67	S50°53'47"W	50.73'	L83	S22°47'11"E	6.14'	L99	N11°10'38"W	22.02'	L115	S48°16'28"W	35.87'
L4	N70°51'31"E	30.44'	L20	N65°12'58"E	3.57'	L36	S26°03'10"W	23.54'	L52	S13°37'01"W	38.51'	L68	S51°56'28"W	68.89'	L84	S46°16'05"W	27.40'	L100	N39°29'35"W	27.39'	L116	S27°26'41"E	24.94'
L5	S40°58'33"W	49.11'	L21	S84°08'52"E	25.10'	L37	S15°11'32"E	23.72'	L53	S76°31'42"E	22.60'	L69	S52°45'23"W	74.37'	L85	S39°21'05"W	43.15'	L101	N46°45'37"W	19.13'	L117	N72°35'45"W	33.29'
L6	S20°01'25"W	61.97'	L22	S21°45'37"E	37.94'	L38	S60°30'11"E	13.14'	L54	S49°30'53"W	37.54'	L70	S39°09'27"W	13.61'	L86	S23°53'15"E	5.69'	L102	N42°49'50"W	19.07'	L118	N86°57'54"W	31.17'
L7	N88°53'01"E	52.52'	L23	S21°59'36"E	39.94'	L39	S1°39'35"W	13.34'	L55	S27°33'30"E	19.25'	L71	S79°44'38"W	12.21'	L87	S59°12'59"W	62.07'	L103	S55°40'43"E	12.72'	L119	N62°48'06"W	33.10'
L8	S33°11'01"E	37.74'	L24	N14°51'21"W	73.30'	L40	S4°50'53"W	18.87'	L56	N77°05'24"E	39.76'	L72	S73°45'32"W	23.59'	L88	S77°31'46"W	37.79'	L104	S33°39'25"E	11.84'	L120	S23°34'55"E	22.37'
L9	S82°09'46"E	42.80'	L25	N5°38'43"W	65.06'	L41	S4°50'53"W	22.31'	L57	S11°14'15"W	13.89'	L73	N83°22'58"W	14.80'	L89	S19°56'46"E	20.18'	L105	S6°08'35"E	34.72'	L121	S17°51'05"E	19.31'
L10	S27°26'41"E	41.70'	L26	N64°37'03"E	27.34'	L42	S87°48'28"E	22.26'	L58	S19°41'09"W	34.73'	L74	S85°34'51"W	15.75'	L90	S45°02'33"E	21.35'	L106	S15°30'22"E	45.26'	L122	S37°16'56"E	6.09'
L11	N18°54'55"W	18.76'	L27	N57°47'51"E	21.22'	L43	N88°23'47"E	9.95'	L59	S25°50'12"W	60.96'	L75	N84°11'40"W	2.75'	L91	S55°56'24"E	22.84'	L107	S47°21'46"E	4.89'	L123	S33°50'26"E	10.66'
L12	S61°31'33"E	186.38'	L28	S55°59'28"E	66.87'	L44	S37°53'38"E	20.51'	L60	S28°59'32"W	58.62'	L76	N66°35'53"W	4.90'	L92	S51°05'40"E	32.29'	L108	S31°01'14"E	4.51'	L124	S28°52'32"E	7.33'
L13	N61°32'53"E	15.50'	L29	S51°02'28"E	45.65'	L45	S48°05'21"W	23.58'	L61	S14°58'15"W	15.38'	L77	N61°31'33"W	74.85'	L93	S55°40'52"E	26.72'	L109	S60°52'50"E	45.83'	L125	S26°07'07"E	24.06'
L14	N69°57'25"E	49.40'	L30	S16°42'49"E	12.56'	L46	S53°54'07"E	26.42'	L62	S15°53'23"W	42.34'	L78	S51°23'11"W	28.43'	L94	S63°08'26"E	26.62'	L110	S11°42'42"E	8.84'			
L15	N69°57'25"E	16.77'	L31	N59°14'26"E	39.86'	L47	N55°05'46"E	72.17'	L63	S55°24'59"W	32.72'	L79	S15°50'44"W	19.25'	L95	S59°42'13"E	11.73'	L111	S15°22'35"W	10.24'			
L16	N72°25'00"E	12.55'	L32	N83°15'52"E	37.81'	L48	N53°16'01"E	46.34'	L64	S51°40'10"W	21.84'	L80	S50°06'46"W	32.69'	L96	S48°46'08"E	35.88'	L112	S62°48'06"E	31.41'			



**Open Space Easement
 Being The Property Of
 Greenmount Parkway
 Williamsburg Propco, LLC
 Parcels 6010200001
 James City County, Virginia**

DATE: 9/12/2022	SHEET 3 OF 3	SCALE: 1"=100'
PROJECT NO: 34783.00	DRAWN BY: CRO	CHECKED BY: SAR

Transportation
Land Development
Environmental Services

351 McLaws Circle, Suite 3
Williamsburg, Virginia 23185
757 220 0500 • FAX 757 903 2794