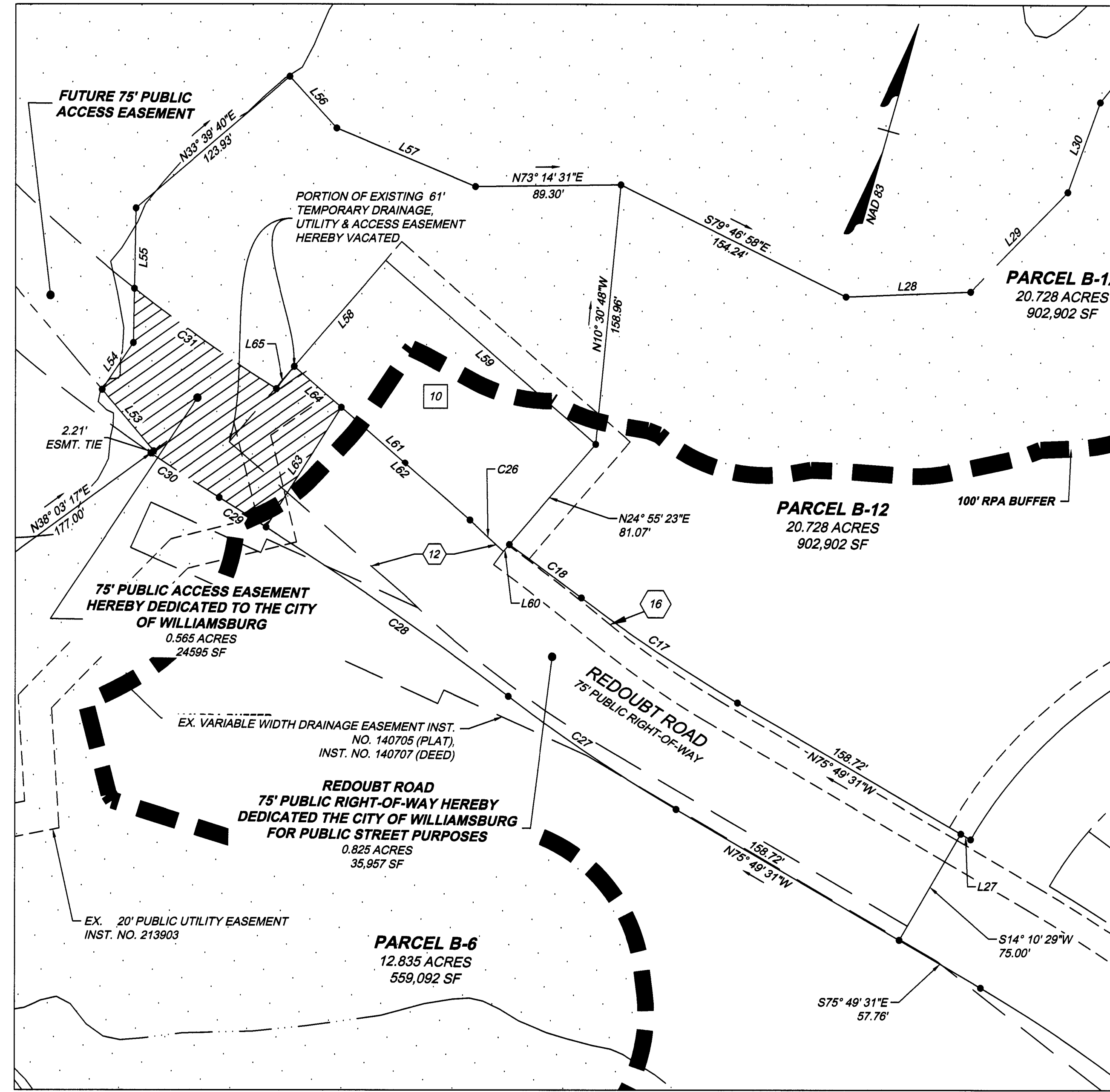


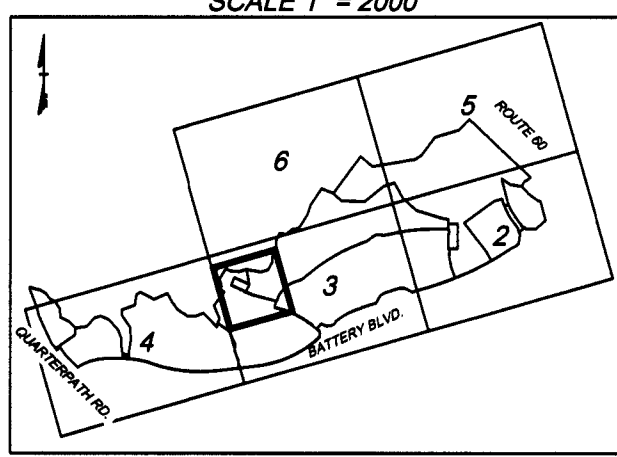
20223716

INSET "A"  
SCALE 1" = 50'



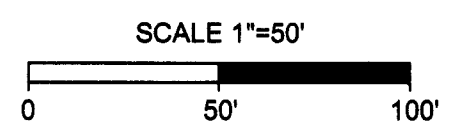
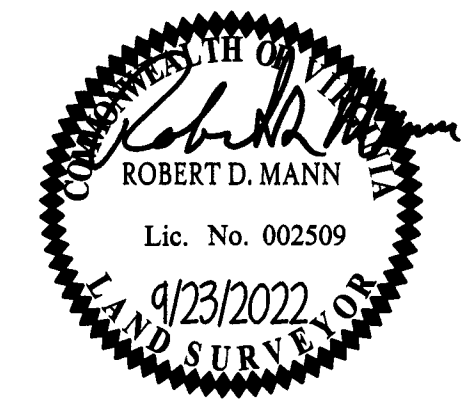
Y:\909\42335-909-Quarterpath Overall\DWG\Sheet\Plat\42335V\_909-PLSUBD-02.dwg | Plotted on 11/7/2022 9:21 AM | by Johnathon Supnet

SHEET INDEX KEY  
SCALE 1" = 2000'



80 Large Small Plat(s) Recorded  
herewith as # 20223716

City of Williamsburg & County of James City  
Circuit Court: This PLAT was recorded on  
December 14, 2022  
at 2:28 AM PM PB PG  
Document # 20223716  
MONA A. FOLEY, CLERK  
*Mona A. Foley*, Clerk



SUBDIVISION  
OF  
**RESIDUAL PARCEL B**  
**QUARTERPATH AT WILLIAMSBURG**  
**SECTION 1**  
CREATING PARCELS B-6, B-7, B-8, B-9, B-10, B-11, & B-12

City of Williamsburg	Virginia
DATE: Aug. 29, 2022	SCALE: 1" = 50'
SHEET 7 OF 8	J.N.: 42335
DRAWN BY: C. McKibbin	CHECK BY: R. Mann
Revised: 9/23/2022	

YOUR VISION ACHIEVED THROUGH OURS.  
Site Development | Residential | Infrastructure | Technology

**TIMMONS GROUP**

THIS DRAWING PREPARED BY THE  
MEMPHIS AREA REGISTERED PROFESSIONAL ENGINEER  
11837 Rock Landing Drive, Suite 306 | Memphis, TN, 38125  
TEL: 901.742.3441 | www.timmons.com