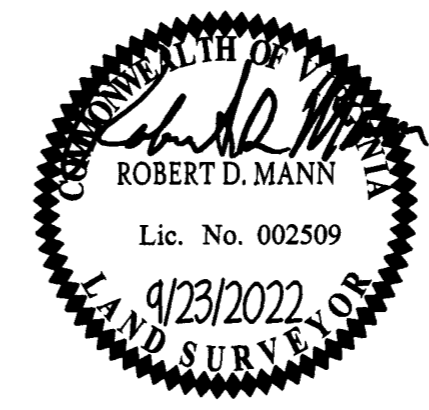
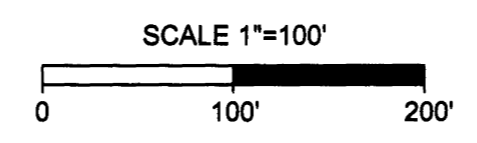
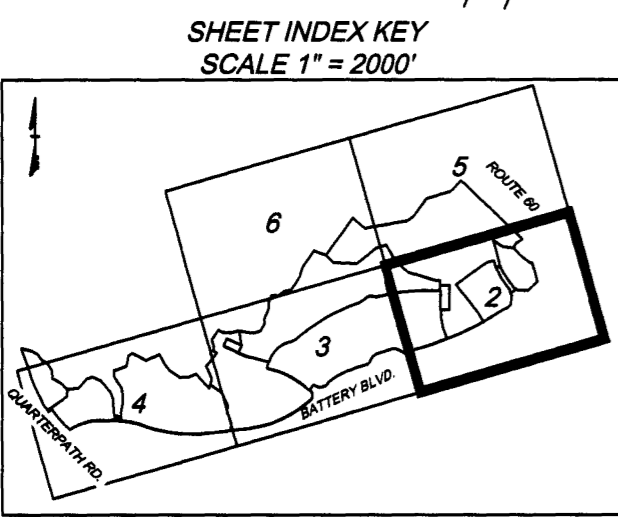
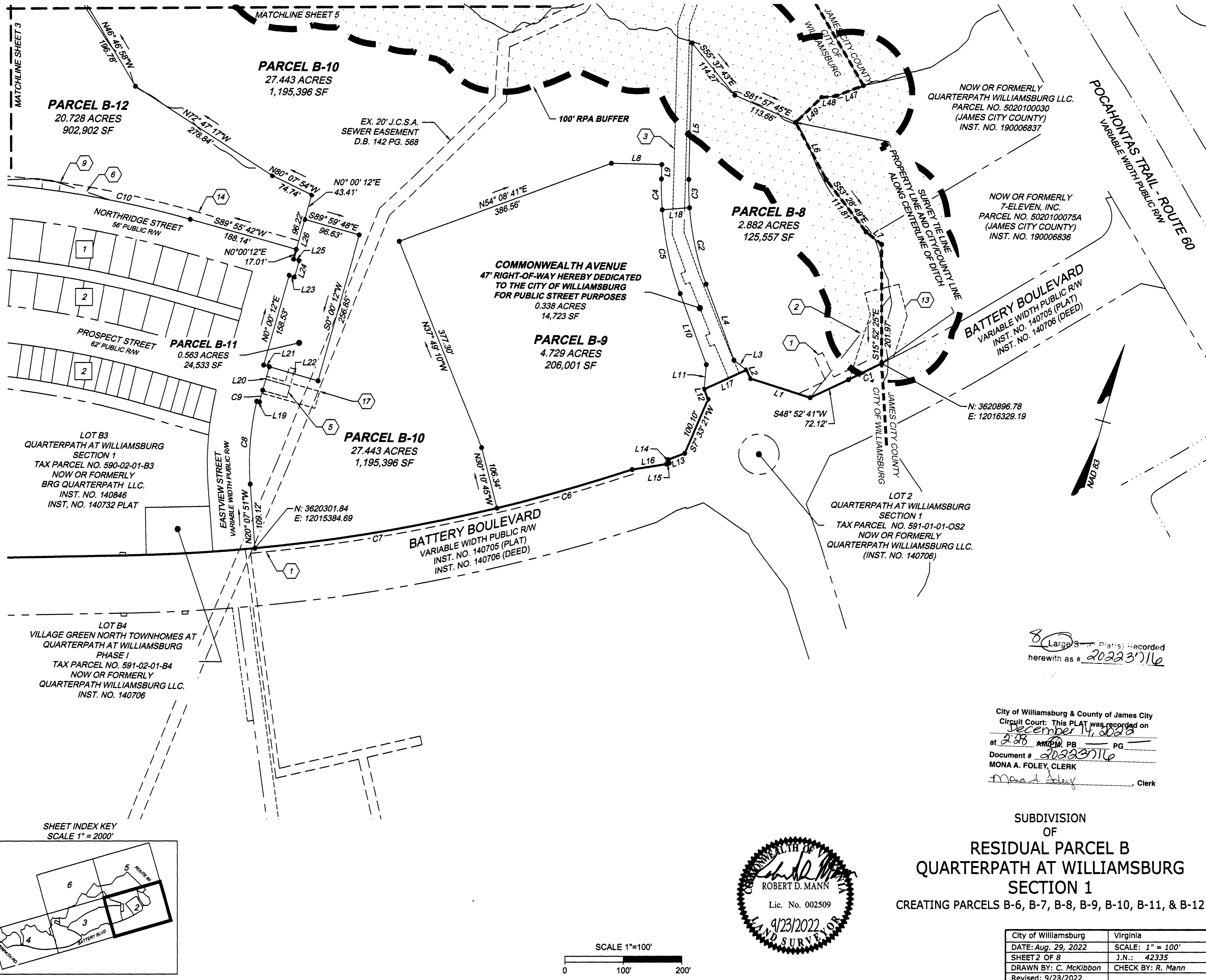


20223716

Y:\1909\42335-909-Quarterpath\000-Quarterpath_Overall\DWG\Sheet\Plat\42335V_909-PLSUBD-02.dwg | Plotted on 11/17/2022 9:20 AM | by Johnathon Supnet



City of Williamsburg & County of James City
 Circuit Court: This PLAT was recorded on
 December 14, 2022
 at 2:08 AM PM PG
 Document # 20223716
 MONA A. FOLEY, CLERK
 Clerk

SUBDIVISION
 OF
 RESIDUAL PARCEL B
 QUARTERPATH AT WILLIAMSBURG
 SECTION 1
 CREATING PARCELS B-6, B-7, B-8, B-9, B-10, B-11, & B-12

City of Williamsburg	Virginia
DATE: Aug. 29, 2022	SCALE: 1" = 100'
SHEET 2 OF 8	J.N.: 42335
DRAWN BY: C. McKibbin	CHECK BY: R. Mann
Revised: 9/23/2022	

YOUR VISION ACHIEVED THROUGH OURS.

Site Development Residential Infrastructure Technology

THIS DRAWING PREPARED AT THE
 OFFICE OF
 11832 Road Landing Drive, Suite 300 | Newport News, VA 23606
 TEL: 757.792.3001 | WWW.TIMMONSGROUP.COM

TIMMONS GROUP