

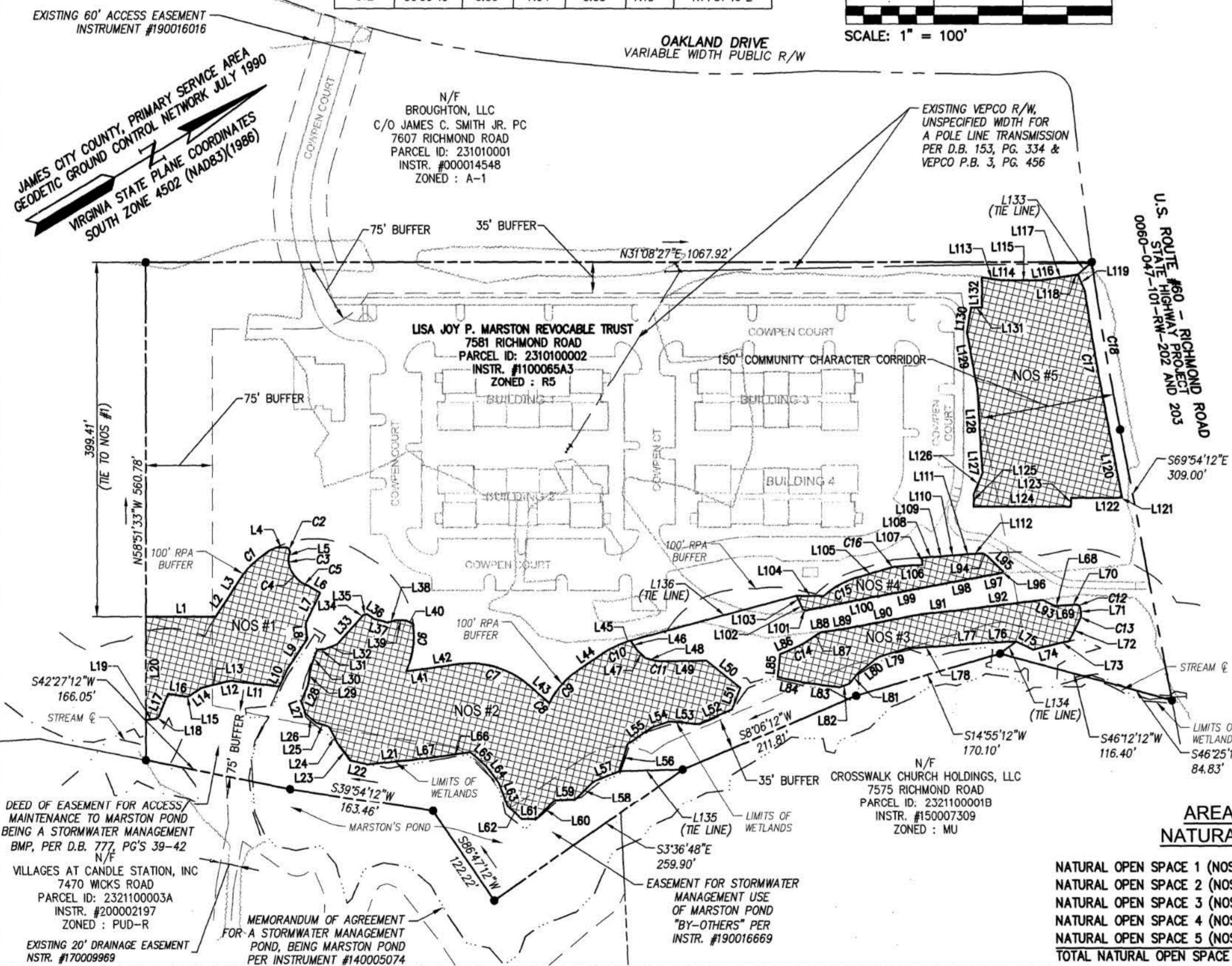
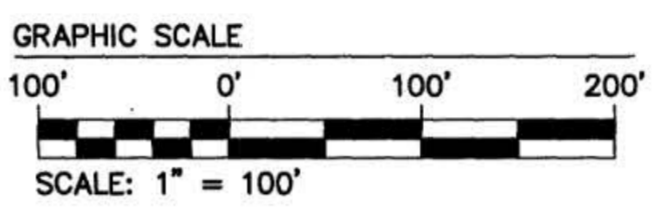
202215791

- NOTES:
- PROPERTY AS SHOWN IS A PORTION OF PARCEL ID #2310100002.
 - PROPERTY ADDRESS IS #7581 RICHMOND ROAD, WILLIAMSBURG, VA 23188.
 - IMPROVEMENTS AND BUFFERS SHOWN ARE PER JCC SITE PLAN SP-21-0110 DATED 10/02/2021

CURVE TABLE						
CURVE #	DELTA	RADIUS	LENGTH	TANGENT	CHORD	CHORD BEARING
C1	32°35'11"	100.00'	56.87'	29.23'	56.11'	N10°28'33"W
C2	109°09'33"	5.00'	9.53'	7.03'	8.15'	N86°44'06"E
C3	28°47'13"	23.71'	11.91'	6.09'	11.79'	S64°14'57"E
C4	28°25'46"	44.65'	22.16'	11.31'	21.93'	N83°50'56"E
C5	12°07'15"	42.07'	8.90'	4.47'	8.88'	N56°03'35"E
C6	31°12'36"	100.00'	54.47'	27.93'	53.80'	S50°32'52"E
C7	49°24'38"	100.00'	86.24'	46.01'	83.59'	N47°33'05"E
C8	4°18'54"	100.00'	7.53'	3.77'	7.53'	N74°24'51"E
C9	28°52'07"	100.00'	50.39'	25.74'	49.85'	N17°27'11"W
C10	16°01'30"	100.00'	27.97'	14.08'	27.88'	N4°59'37"E
C11	12°07'14"	39.19'	8.29'	4.16'	8.27'	N36°44'05"E
C12	90°56'49"	5.00'	7.94'	5.08'	7.13'	N71°31'46"E

CURVE TABLE						
CURVE #	DELTA	RADIUS	LENGTH	TANGENT	CHORD	CHORD BEARING
C13	32°44'19"	10.00'	5.71'	2.94'	5.64'	S46°37'40"E
C14	12°54'38"	56.00'	12.62'	6.34'	12.59'	N4°22'55"E
C15	25°50'05"	92.25'	41.60'	21.16'	41.24'	N1°45'07"E
C16	12°49'09"	92.25'	20.64'	10.36'	20.60'	N21°04'44"E
C17	2°21'55"	3934.23'	162.42'	81.22'	162.40'	S68°43'14"E

LINE TABLE			LINE TABLE			LINE TABLE			LINE TABLE		
LINE	BEARING	LENGTH	LINE	BEARING	LENGTH	LINE	BEARING	LENGTH	LINE	BEARING	LENGTH
L1	N31°08'27"E	78.84'	L41	N23°55'53"E	26.53'	L81	S19°45'44"E	16.94'	L121	S19°53'27"W	2.28'
L2	N24°58'23"W	30.07'	L42	N22°50'46"E	31.89'	L82	S11°59'46"W	12.37'	L122	S31°08'27"W	55.30'
L3	N26°46'09"W	18.03'	L43	N72°15'24"E	23.13'	L83	S39°05'48"W	39.33'	L123	S58°51'33"E	10.00'
L4	N32°09'19"E	10.70'	L44	N3°01'07"W	34.05'	L84	S43°07'49"W	30.19'	L124	S31°08'27"W	109.29'
L5	S38°41'08"E	3.60'	L45	N13°00'22"E	6.28'	L85	N53°07'33"W	25.98'	L125	N58°51'33"W	14.06'
L6	N61°08'38"E	15.49'	L46	N85°41'01"E	12.11'	L86	N7°52'14"E	17.08'	L126	N36°04'04"W	26.16'
L7	S33°05'11"E	37.63'	L47	N75°56'20"E	14.16'	L87	N2°04'24"W	22.40'	L127	N63°23'58"W	23.10'
L8	S63°41'08"E	17.90'	L48	N43°38'26"E	11.65'	L88	N24°22'50"E	14.41'	L128	N62°04'17"W	69.67'
L9	S25°11'43"E	41.06'	L49	N30°13'03"E	50.13'	L89	N22°35'32"E	14.79'	L129	N68°56'37"W	68.23'
L10	S34°38'03"E	20.77'	L50	N70°07'31"E	49.06'	L90	N20°35'10"E	86.85'	L130	N49°27'27"W	27.71'
L11	S37°21'23"W	54.77'	L51	S36°47'52"E	25.86'	L91	N25°30'20"E	38.65'	L131	N31°08'27"E	12.25'
L12	S23°41'09"W	5.79'	L52	S7°37'43"W	41.10'	L92	N24°11'09"E	98.78'	L132	N58°51'33"W	33.71'
L13	S16°49'04"W	29.58'	L53	S36°16'06"W	33.10'	L93	N56°31'22"E	15.19'	L133	S10°48'39"E	20.81'
L14	S2°31'56"E	16.22'	L54	S13°00'22"W	20.43'	L94	N61°12'10"E	5.73'	L134	N5°37'32"W	22.85'
L15	S23°55'32"W	2.97'	L55	S3°01'07"E	34.05'	L95	N73°57'53"E	24.87'	L135	S29°28'18"W	72.23'
L16	S39°19'21"W	20.97'	L56	S41°35'51"E	32.48'	L96	S22°21'20"E	2.16'	L136	S16°11'33"W	194.13'
L17	S36°19'36"E	27.13'	L57	S9°55'00"W	30.25'	L97	S20°31'35"W	21.67'			
L18	S17°31'57"E	3.65'	L58	S12°12'27"E	30.63'	L98	S20°32'34"W	52.46'			
L19	S25°25'07"W	12.13'	L59	S29°58'01"W	21.49'	L99	S20°33'21"W	74.59'			
L20	N58°51'33"W	115.82'	L60	S12°51'16"E	32.09'	L100	S20°08'49"W	76.34'			
L21	S25°30'18"W	50.67'	L61	S33°07'43"W	15.28'	L101	S40°16'22"W	4.28'			
L22	S44°27'59"W	19.06'	L62	S72°48'03"W	21.53'	L102	N81°18'13"W	7.94'			
L23	S82°52'56"W	24.49'	L63	N78°36'20"W	28.04'	L103	N84°56'47"W	9.02'			
L24	N85°43'26"W	21.15'	L64	S84°05'22"W	24.65'	L104	N31°08'27"E	30.61'			
L25	S49°01'36"W	15.60'	L65	S72°15'24"W	23.13'	L105	N14°40'09"E	33.30'			
L26	S70°12'56"W	15.15'	L66	S22°50'46"W	32.83'	L106	N27°29'19"E	23.74'			
L27	N78°24'55"W	15.33'	L67	S23°55'53"W	33.34'	L107	N62°51'59"W	7.75'			
L28	N35°08'47"W	19.32'	L68	N32°59'49"E	3.56'	L108	N27°29'19"E	19.82'			
L29	N50°39'14"W	21.21'	L69	N26°30'09"E	14.57'	L109	N26°42'20"E	4.22'			
L30	N38°30'34"W	20.46'	L70	N26°03'22"E	5.20'	L110	N26°42'20"E	22.11'			
L31	N26°11'42"E	9.16'	L71	S62°59'49"E	6.74'	L111	N26°42'20"E	12.02'			
L32	N10°01'47"E	14.46'	L72	S31°44'11"E	26.92'	L112	N28°11'14"E	10.50'			
L33	N16°40'02"W	41.69'	L73	S19°20'12"W	14.62'	L113	N39°14'29"E	21.76'			
L34	N16°40'02"W	2.23'	L74	S17°05'54"W	26.77'	L114	N33°15'54"E	5.10'			
L35	N15°30'27"E	4.67'	L75	S57°00'49"W	21.02'	L115	N30°58'17"E	40.45'			
L36	N64°54'01"E	9.91'	L76	S28°25'54"W	40.90'	L116	N22°03'28"E	4.94'			
L37	N45°39'30"E	14.90'	L77	S26°42'20"W	39.04'	L117	N21°58'43"E	32.20'			
L38	N17°27'09"E	9.77'	L78	S27°29'19"W	44.20'	L118	N19°01'07"E	4.09'			
L39	N31°06'21"E	11.74'	L79	S14°40'09"W	33.30'	L119	S81°24'53"E	19.92'			
L40	N56°40'12"E	8.92'	L80	S6°11'17"E	28.51'	L120	S69°54'12"E	75.15'			



**AREA TABULATION
NATURAL OPEN SPACE**

NATURAL OPEN SPACE 1 (NOS #1)	19,622 S.F.	0.450 AC.±
NATURAL OPEN SPACE 2 (NOS #2)	54,965 S.F.	1.262 AC.±
NATURAL OPEN SPACE 3 (NOS #3)	14,707 S.F.	0.338 AC.±
NATURAL OPEN SPACE 4 (NOS #4)	5,596 S.F.	0.128 AC.±
NATURAL OPEN SPACE 5 (NOS #5)	35,803 S.F.	0.822 AC.±
TOTAL NATURAL OPEN SPACE	130,693 S.F.	3.000 AC.±

LEGEND:
 CONSERVATION AREA AND NATURAL OPEN SPACE EASEMENT TO BE CONVEYED TO JAMES CITY COUNTY (3.00 ACRES±)

STATE OF VIRGINIA
 CITY OF WILLIAMSBURG & COUNTY OF JAMES CITY CIRCUIT COURT.
 THIS 3rd DAY OF November 2022
 THE PLAT SHOWN HEREON WAS PRESENTED AND ADMITTED TO THE RECORD AS THE LAW DIRECTS. @ 9:40 AM/PM
 INSTRUMENT # 202215791
 TESTE: **MONA A. FOLEY, CLERK**
 MONA A. FOLEY, CLERK

Rev.	Date	Description	Revised By



AES
 CONSULTING ENGINEERS
 5248 Olde Towne Road, Suite 1
 Williamsburg, Virginia 23188
 Phone: (757) 253-0040
 Fax: (757) 220-8994
 www.aesva.com

MAP SHOWING NATURAL OPEN SPACE EASEMENT AND CONSERVATION AREA BEING 3.00 ACRES±
 A PORTION OF TAX PARCEL ID 2310100002 OWNED BY THE LISA JOY P. MARSTON REVOCABLE TRUST TO BE CONVEYED TO JAMES CITY COUNTY
 STONEHOUSE DISTRICT JAMES CITY COUNTY VIRGINIA

Project Contacts: SJB/JFS
 Project Number: W10503-02
 Scale: 1"=100'
 Date: 07/12/22
 Sheet Number
1 of 1

S:\ORD\W\10503-02 - Calland From Acctmms\Survey\Plats\W10503-02 Natural Open Space.dwg, 10/27/2022, 11:27 PM, Ben Bickers