

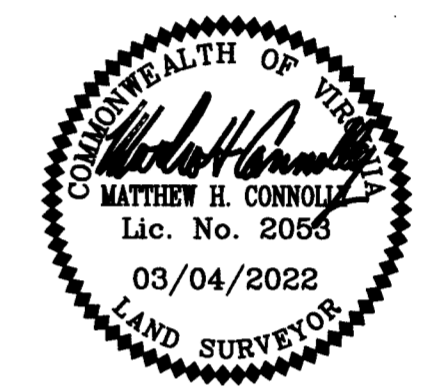
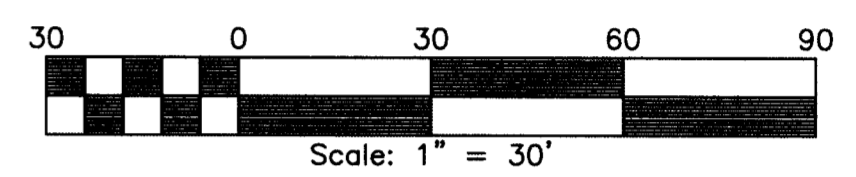
202213646

SUBDIVISION OF
PARCEL ONE
LOUISE G. WALTRIP SUBDIVISION
(PIN: 4830100038)

JAMES CITY COUNTY ROBERTS DISTRICT VIRGINIA
DATE: 03/04/2022 SCALE: 1"=30' JOB # 19-003

LandTech Resources, Inc.
Engineering & Surveying Consultants
205 Bulifants Blvd., Suite E, Williamsburg, Virginia 23188
Phone: (757) 565-1677 Fax: (757) 565-0782
web: landtechresources.com

SHEET 2 OF 2
JCC-S-20-0024



N/F
BITTENDER, GAIL M.
& CLARK, FRANK R.
INST. #030026031
ZONED: R8
PIN #4830100039

- LEGEND**
- UTILITY POLE
 - OH- OVERHEAD UTILITY
 - BSL=BUILDING SETBACK LINE
 - RPA=RESOURCE PROTECTION AREA
 - IRF = IRON ROD FOUND
 - IRS = IRON ROD TO BE SET

NOTE: RECORD PLAT DOES NOT MATHEMATICALLY CLOSE. PROPERTY LINES SHOWN HERON ARE BASED ON RECORD PLATS AND PROPERTY CORNER MARKERS FOUND.

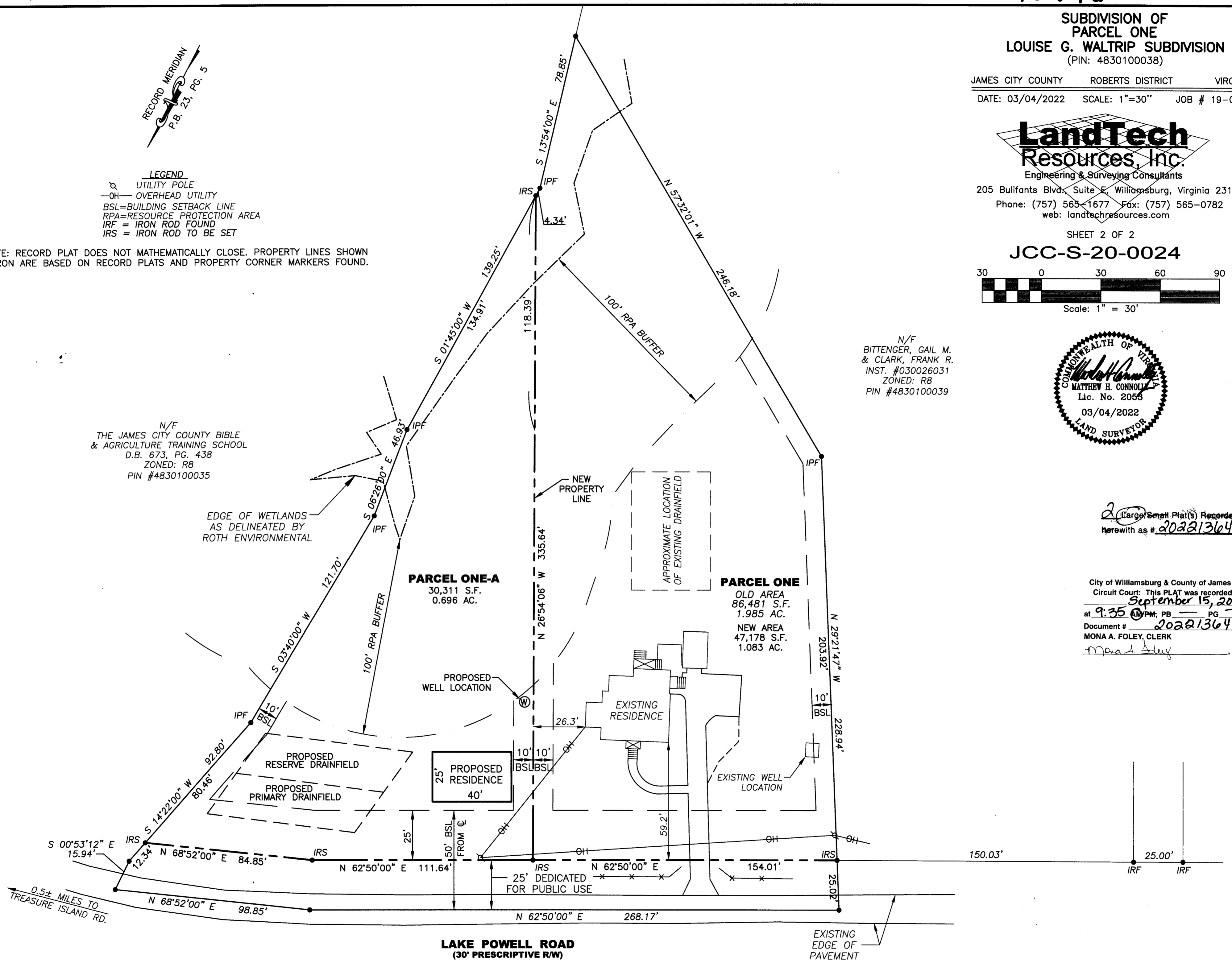
N/F
THE JAMES CITY COUNTY BIBLE
& AGRICULTURE TRAINING SCHOOL
D.B. 673, PG. 438
ZONED: R8
PIN #4830100035

EDGE OF WETLANDS
AS DELINEATED BY
ROTH ENVIRONMENTAL

PARCEL ONE-A
30,311 S.F.
0.696 AC.

PARCEL ONE
OLD AREA
86,481 S.F.
1.985 AC.
NEW AREA
47,178 S.F.
1.083 AC.

City of Williamsburg & County of James City
Circuit Court: This PLAT was recorded on
September 15, 2022
at 9:35 AM/PM, PB PG
Document # 202213646
MONA A. FOLEY, CLERK
Mona A. Foley, Clerk



0.5± MILES TO
TREASURE ISLAND RD.