

202213646

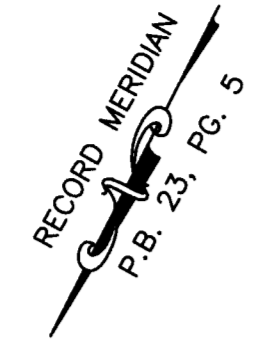
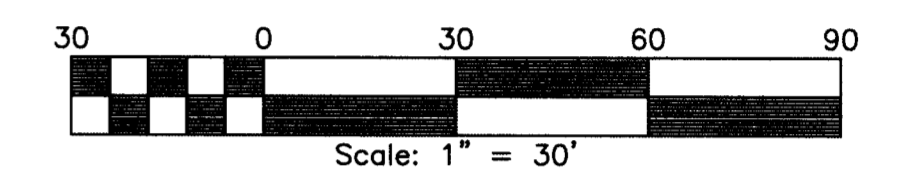
SUBDIVISION OF  
PARCEL ONE  
LOUISE G. WALTRIP SUBDIVISION  
(PIN: 4830100038)

JAMES CITY COUNTY ROBERTS DISTRICT VIRGINIA  
DATE: 03/04/2022 SCALE: 1"=30' JOB # 19-003



Engineering & Surveying Consultants  
205 Bulifants Blvd., Suite E, Williamsburg, Virginia 23188  
Phone: (757) 565-1677 Fax: (757) 565-0782  
web: landtechresources.com

SHEET 2 OF 2  
JCC-S-20-0024

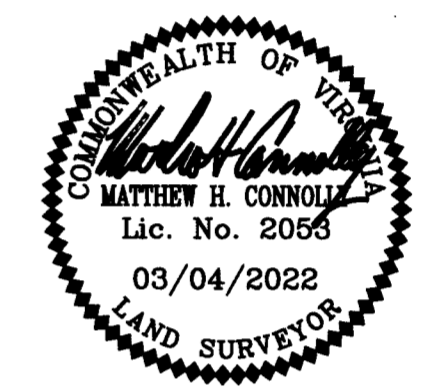


- LEGEND**
- ⊙ UTILITY POLE
  - OH— OVERHEAD UTILITY
  - BSL=BUILDING SETBACK LINE
  - RPA=RESOURCE PROTECTION AREA
  - IRF = IRON ROD FOUND
  - IRS = IRON ROD TO BE SET

NOTE: RECORD PLAT DOES NOT MATHEMATICALLY CLOSE. PROPERTY LINES SHOWN HERON ARE BASED ON RECORD PLATS AND PROPERTY CORNER MARKERS FOUND.

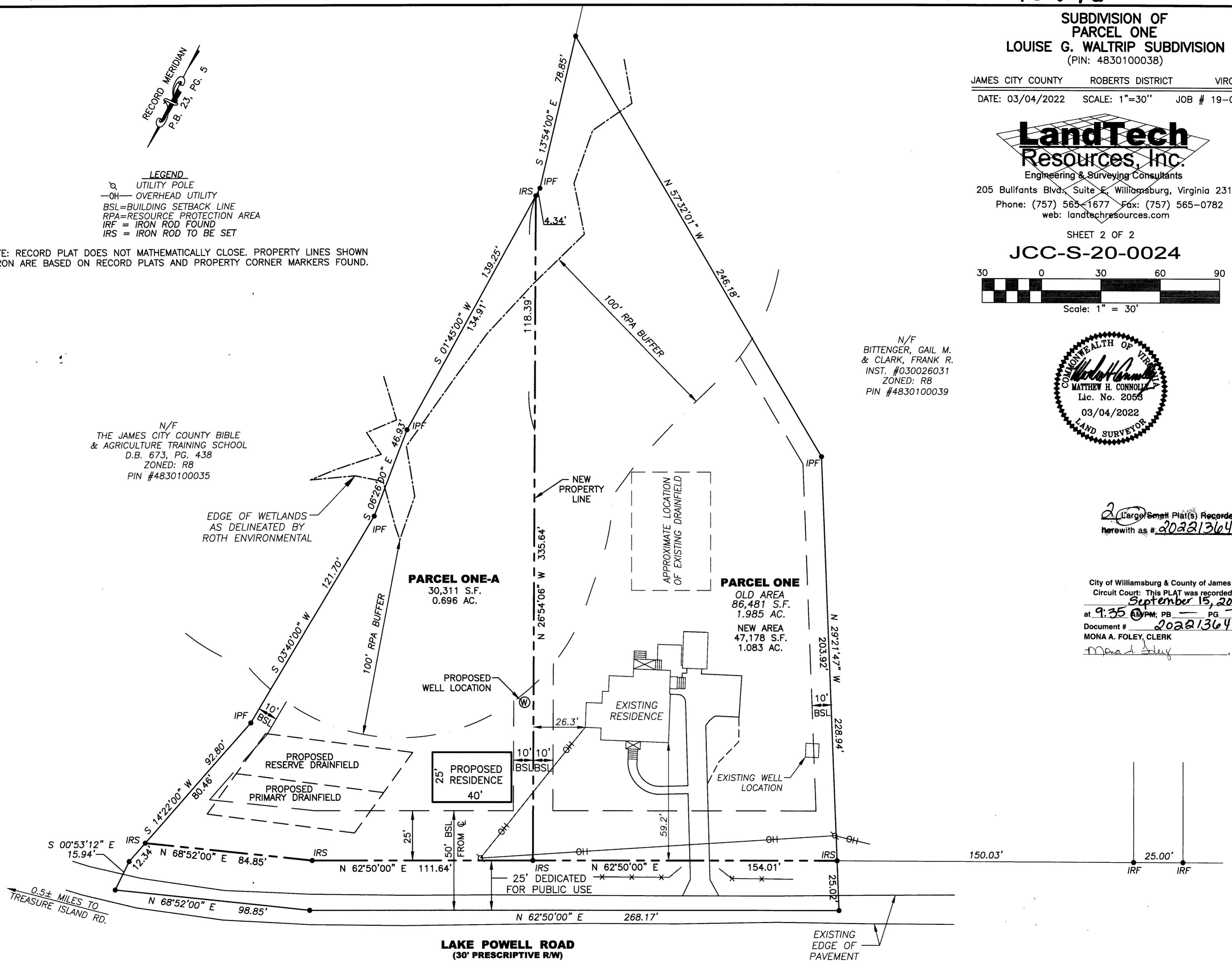
N/F  
THE JAMES CITY COUNTY BIBLE  
& AGRICULTURE TRAINING SCHOOL  
D.B. 673, PG. 438  
ZONED: R8  
PIN #4830100035

N/F  
BITTENDER, GAIL M.  
& CLARK, FRANK R.  
INST. #030026031  
ZONED: R8  
PIN #4830100039



20 Large/Small Plat(s) Recorded  
herewith as # 202213646

City of Williamsburg & County of James City  
Circuit Court: This PLAT was recorded on  
September 15, 2022  
at 9:35 AM/PM, PB — PG —  
Document # 202213646  
MONA A. FOLEY, CLERK  
*Mona A. Foley*, Clerk



0.5± MILES TO  
TREASURE ISLAND RD.

LAKE POWELL ROAD  
(30' PRESCRIPTIVE R/W)

EXISTING  
EDGE OF  
PAVEMENT