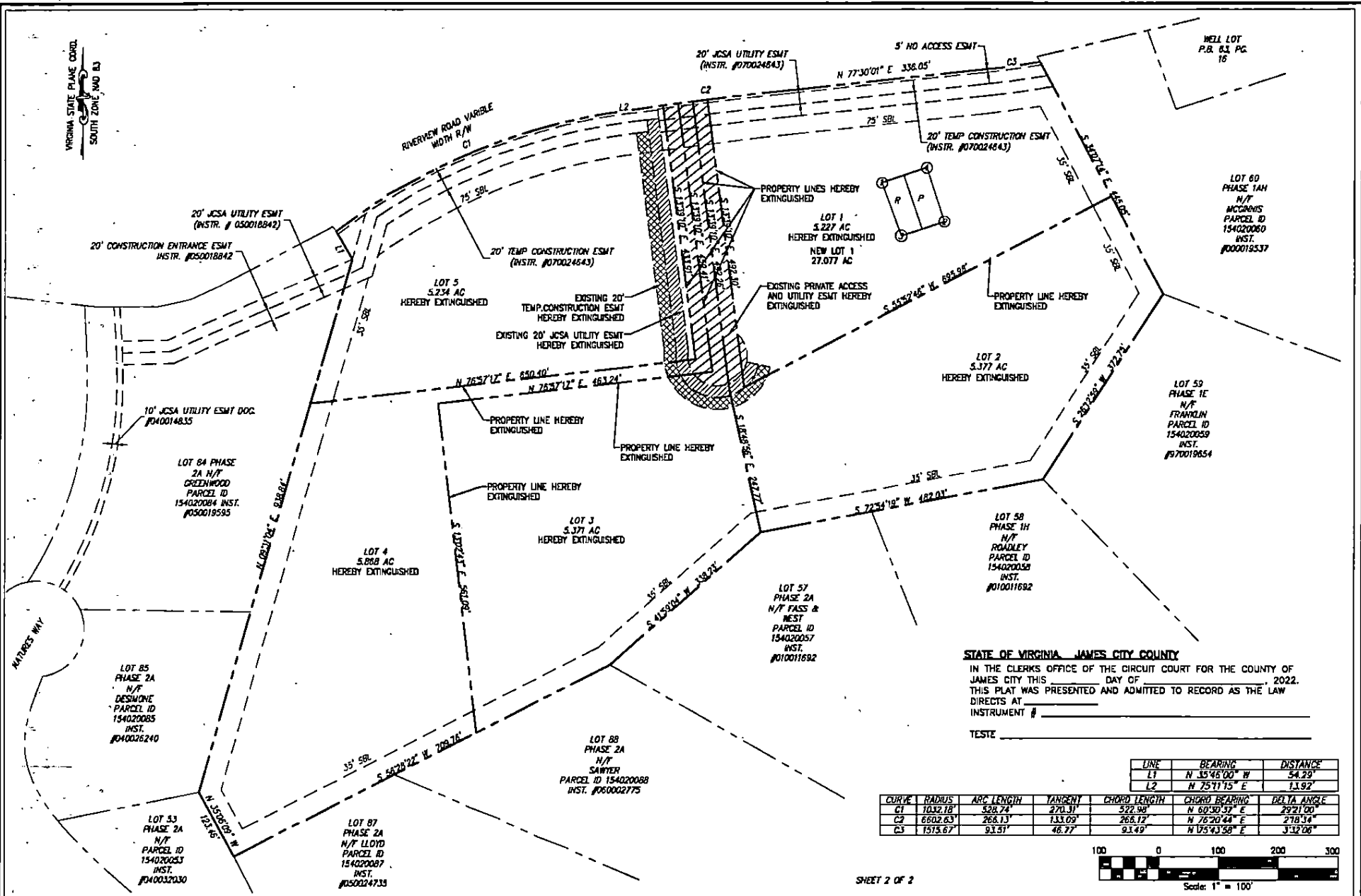
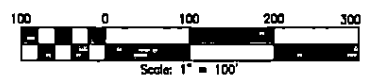


PAGE 4 OF 4



STATE OF VIRGINIA - JAMES CITY COUNTY
 IN THE CLERKS OFFICE OF THE CIRCUIT COURT FOR THE COUNTY OF JAMES CITY THIS _____ DAY OF _____, 2022,
 THIS PLAT WAS PRESENTED AND ADMITTED TO RECORD AS THE LAW DIRECTS AT INSTRUMENT # _____
 TESTE _____

CURVE	RADIUS	ARC LENGTH	TANGENT	CHORD LENGTH	CHORD BEARING	DELTA ANGLE
C1	1032.18'	528.74'	270.31'	522.98'	N 60°30'57" E	2921.00"
C2	6602.63'	268.13'	133.09'	268.12'	N 76°20'44" E	278.34"
C3	1515.67'	93.51'	46.77'	93.49'	N 05°43'58" E	332.06"



SHEET 2 OF 2



DATE: 04/12/22
 DRAWN BY: CJ
 PROJECT No. 22-108
 FILE NAME: 22-108.DWG
 REFERENCES:
 P.B. 63, PG. 16

BOUNDARY LINE EXTINGUISHMENT PLAT
 LOTS 1-5 BLACKHORN SUBDIVISION
 INSTR. #070024643
 JAMES CITY COUNTY STONEHOUSE DISTRICT VIRGINIA

NO.	DATE	REVISION / COMMENT / NOTE

LRI
LANDTECH
RESOURCES, INC.
 305 Burdette Blvd., Suite E, Williamsburg, VA 23188
 P.O. Box 1477, Fax (757) 545-0763
 www.landtechresources.com