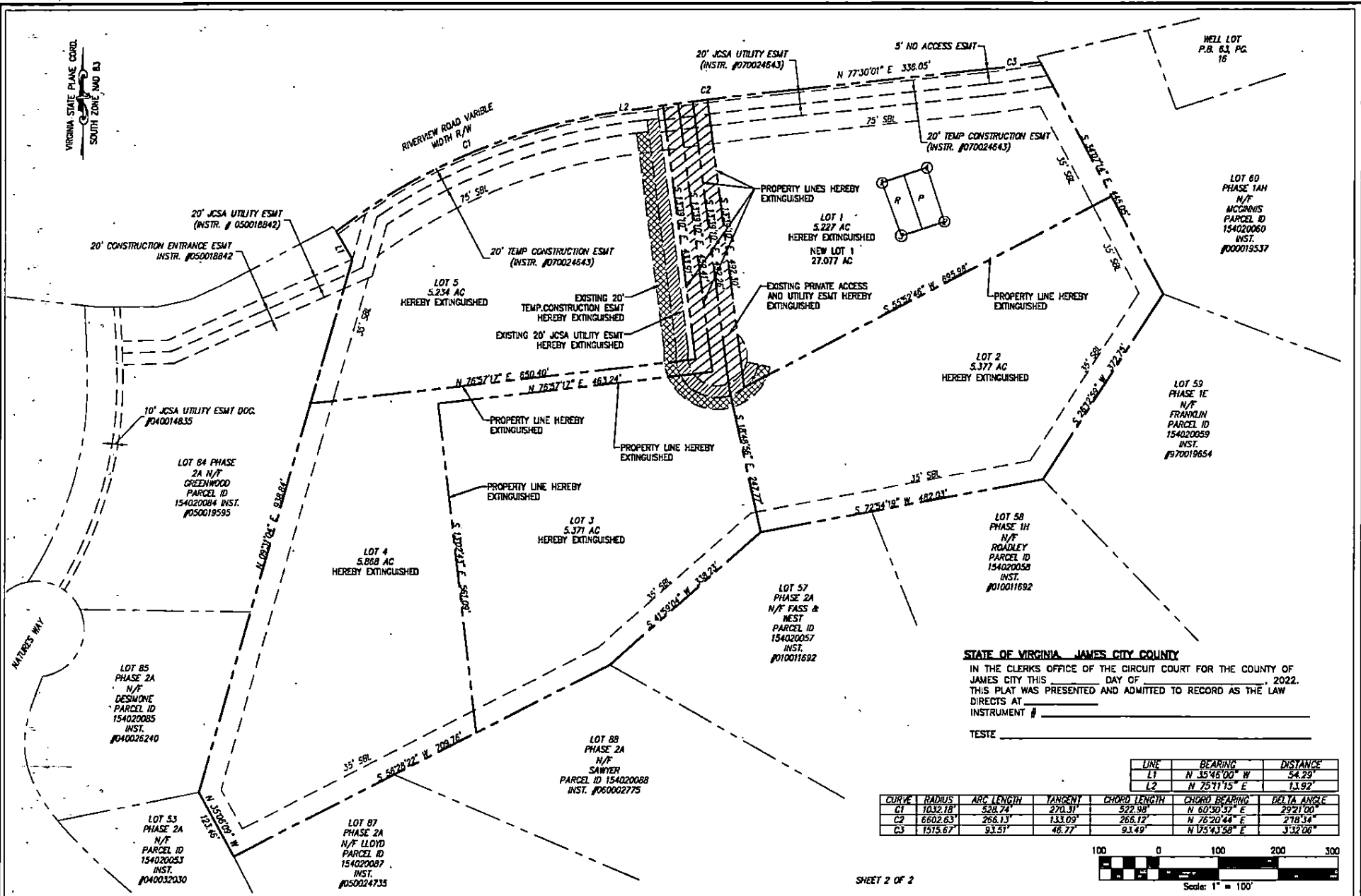


PAGE 4 OF 4

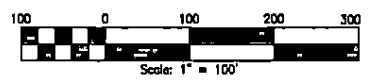


STATE OF VIRGINIA, JAMES CITY COUNTY  
 IN THE CLERKS OFFICE OF THE CIRCUIT COURT FOR THE COUNTY OF JAMES CITY THIS \_\_\_\_\_ DAY OF \_\_\_\_\_, 2022,  
 THIS PLAT WAS PRESENTED AND ADMITTED TO RECORD AS THE LAW DIRECTS AT INSTRUMENT # \_\_\_\_\_  
 TESTE \_\_\_\_\_

LINE	BEARING	DISTANCE
L1	N 35°46'00" W	54.29'
L2	N 75°11'15" E	11.92'

CURVE	RADIUS	ARC LENGTH	TANGENT	CHORD LENGTH	CHORD BEARING	DELTA ANGLE
C1	1032.18'	528.74'	270.31'	522.98'	N 60°30'57" E	2921.00"
C2	6602.63'	266.13'	133.09'	266.12'	N 76°20'44" E	278.34"
C3	1515.67'	91.51'	46.77'	91.49'	N 05°43'58" E	332.06"



SHEET 2 OF 2



DATE: 04/12/22  
 DRAWN BY: OJ  
 PROJECT No. 22-108  
 FILE NAME: 22-108.DWG  
 REFERENCES:  
 P.B. 63, PG. 16

BOUNDARY LINE EXTINGUISHMENT PLAT  
 LOTS 1-5 BLACKHORN SUBDIVISION  
 INSTR. #070024643  
 JAMES CITY COUNTY      STONEHOUSE DISTRICT      VIRGINIA

NO.	DATE	REVISION / COMMENT / NOTE

**LRI**  
**LANDTECH**  
**RESOURCES, INC.**  
 205 Buffalo Blvd., Suite E, Williamsburg, VA 23188  
 Ph: (703) 843-1477 Fax: (703) 843-0782  
 www.landtechresources.com