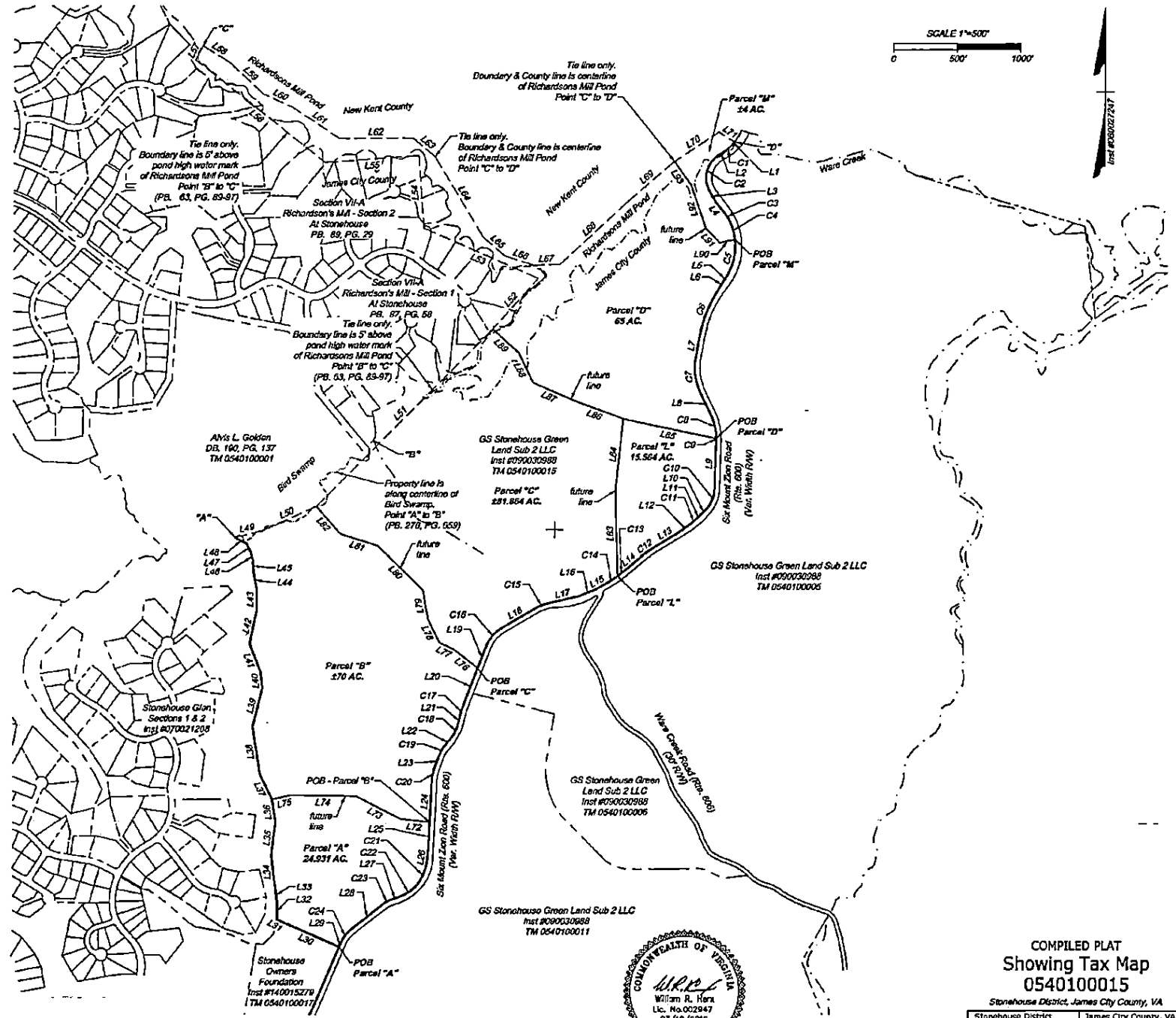
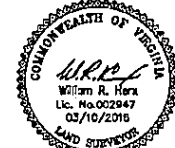


Page 12 of 13

Y:\001\34549-E01-Stonehouse\DWG\34549-Stonehouse-Tract_3-Compiled_Plat.dwg | Plotted on 3/17/2016 3:13 PM | by Randy Herx



- General Notes:**
1. Property line information was compiled.
 2. Easements, if any, are not shown.
 3. This is not a subdivision plat and is not intended to be used for any land divisions.



COMPILED PLAT
Showing Tax Map
0540100015
Stonehouse District, James City County, VA

Stonehouse District	James City County, VA
DATE: March 10, 2016	SCALE: 1" = 500'
SHEET 1 OF 2	J.N. 34549
DRAWN BY: W.R. Herx	CHECK BY: W.R. Herx

TIMMONS GROUP

Site Development | Residential | Infrastructure | Technology

OUR SERVICES INCLUDE THE FOLLOWING: CONSULTING ENGINEERING, SURVEYING, AND LAND ACQUISITION. CONTACT US AT 800.225.1111 OR WWW.TIMMONSGROUP.COM