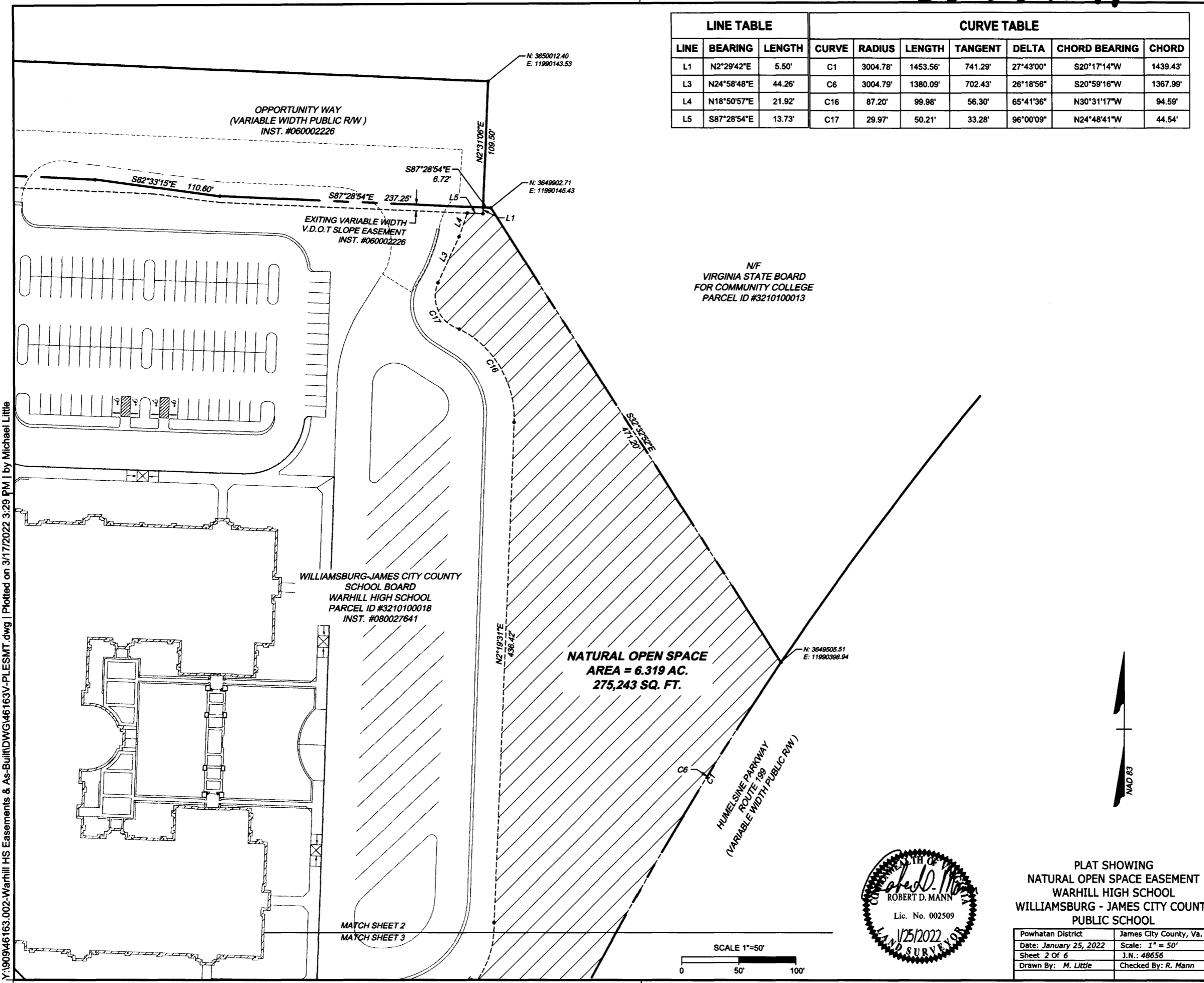


202204299

LINE TABLE			CURVE TABLE						
LINE	BEARING	LENGTH	CURVE	RADIUS	LENGTH	TANGENT	DELTA	CHORD BEARING	CHORD
L1	N2°29'42"E	5.50'	C1	3004.78'	1453.56'	741.29'	27°43'00"	S20°17'14"W	1439.43'
L3	N24°58'48"E	44.26'	C6	3004.79'	1380.09'	702.43'	26°18'56"	S20°59'16"W	1367.99'
L4	N18°50'57"E	21.92'	C16	87.20'	99.98'	56.30'	65°41'36"	N30°31'17"W	94.59'
L5	S87°28'54"E	13.73'	C17	29.97'	50.21'	33.28'	96°00'09"	N24°48'41"W	44.54'



Y:\190946163-002-Warhill HS Easements & As-Built\DWG\46163V-PLESMT.dwg | Plotted on 3/17/2022 3:29 PM | by Michael Little

THE DRAWING PREPARED AT THE OFFICE OF TIMMONS GROUP, INC. IS A PROFESSIONAL ENGINEERING DESIGN. IT IS THE PROPERTY OF TIMMONS GROUP, INC. AND IS NOT TO BE REPRODUCED OR TRANSMITTED IN ANY FORM OR BY ANY MEANS, ELECTRONIC OR MECHANICAL, INCLUDING PHOTOCOPYING, RECORDING, OR BY ANY INFORMATION STORAGE AND RETRIEVAL SYSTEM, WITHOUT THE WRITTEN PERMISSION OF TIMMONS GROUP, INC. 11432 Rock Hill Road, Suite 200, Rock Hill, SC 29732-3001, www.timmons.com

TIMMONS GROUP

YOUR VISION ACHIEVED THROUGH OURS.

Sites Development | Residential | Infrastructure | Technology

City of Williamsburg & County of James City Circuit Court: This PLAT was recorded on

at 9:46 AM March 18, 2022 PG

Document # 202204299

MONA A. FOLEY, CLERK

Mona A. Foley, Clerk

6-Large Small Plat(s) Recorded herewith as # 202204299

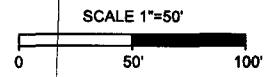
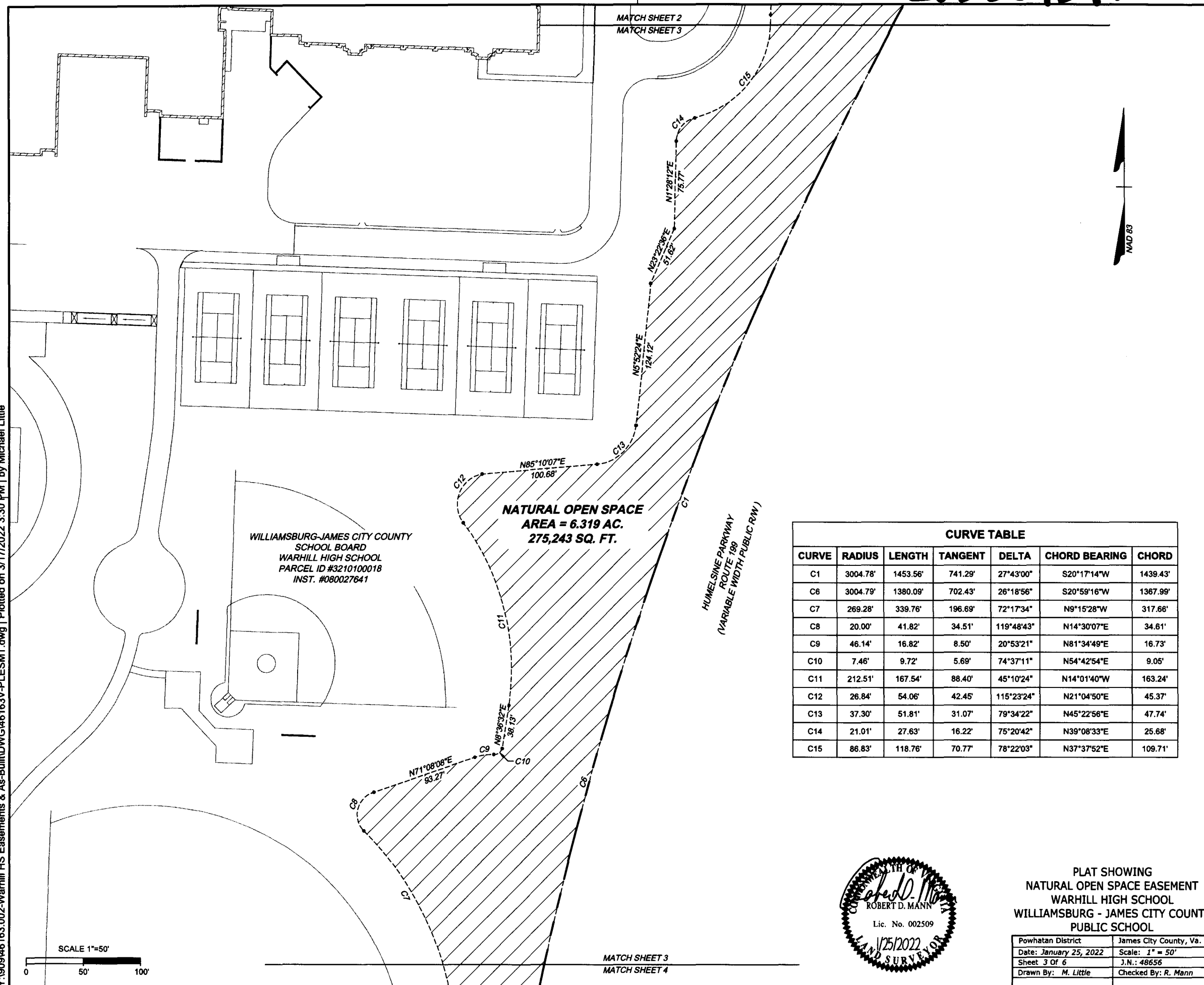


PLAT SHOWING
NATURAL OPEN SPACE EASEMENT
WARHILL HIGH SCHOOL
WILLIAMSBURG - JAMES CITY COUNTY
PUBLIC SCHOOL

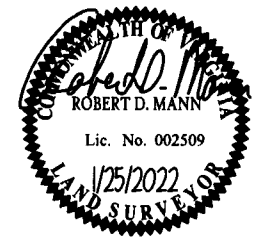
Powhatan District	James City County, Va.
Date: January 25, 2022	Scale: 1" = 50'
Sheet 2 Of 6	J.N.: 48656
Drawn By: M. Little	Checked By: R. Mann

202204299

Y:\190946163.002-Warhill HS Easements & As-Built\DWG\46163V-PLSMT.dwg | Plotted on 3/17/2022 3:30 PM | by Michael Little



CURVE TABLE						
CURVE	RADIUS	LENGTH	TANGENT	DELTA	CHORD BEARING	CHORD
C1	3004.78'	1453.56'	741.29'	27°43'00"	S20°17'14"W	1439.43'
C6	3004.79'	1380.09'	702.43'	26°18'56"	S20°59'16"W	1367.99'
C7	269.28'	339.76'	196.69'	72°17'34"	N9°15'28"W	317.66'
C8	20.00'	41.82'	34.51'	119°48'43"	N14°30'07"E	34.61'
C9	46.14'	16.82'	8.50'	20°53'21"	N81°34'49"E	16.73'
C10	7.46'	9.72'	5.69'	74°37'11"	N54°42'54"E	9.05'
C11	212.51'	167.54'	88.40'	45°10'24"	N14°01'40"W	163.24'
C12	26.84'	54.06'	42.45'	115°23'24"	N21°04'50"E	45.37'
C13	37.30'	51.81'	31.07'	79°34'22"	N45°22'56"E	47.74'
C14	21.01'	27.63'	16.22'	75°20'42"	N39°08'33"E	25.68'
C15	86.83'	118.76'	70.77'	78°22'03"	N37°37'52"E	109.71'



PLAT SHOWING
NATURAL OPEN SPACE EASEMENT
WARHILL HIGH SCHOOL
WILLIAMSBURG - JAMES CITY COUNTY
PUBLIC SCHOOL

Powhatan District	James City County, Va.
Date: January 25, 2022	Scale: 1" = 50'
Sheet 3 Of 6	J.N.: 48656
Drawn By: M. Little	Checked By: R. Mann

TIMMONS GROUP

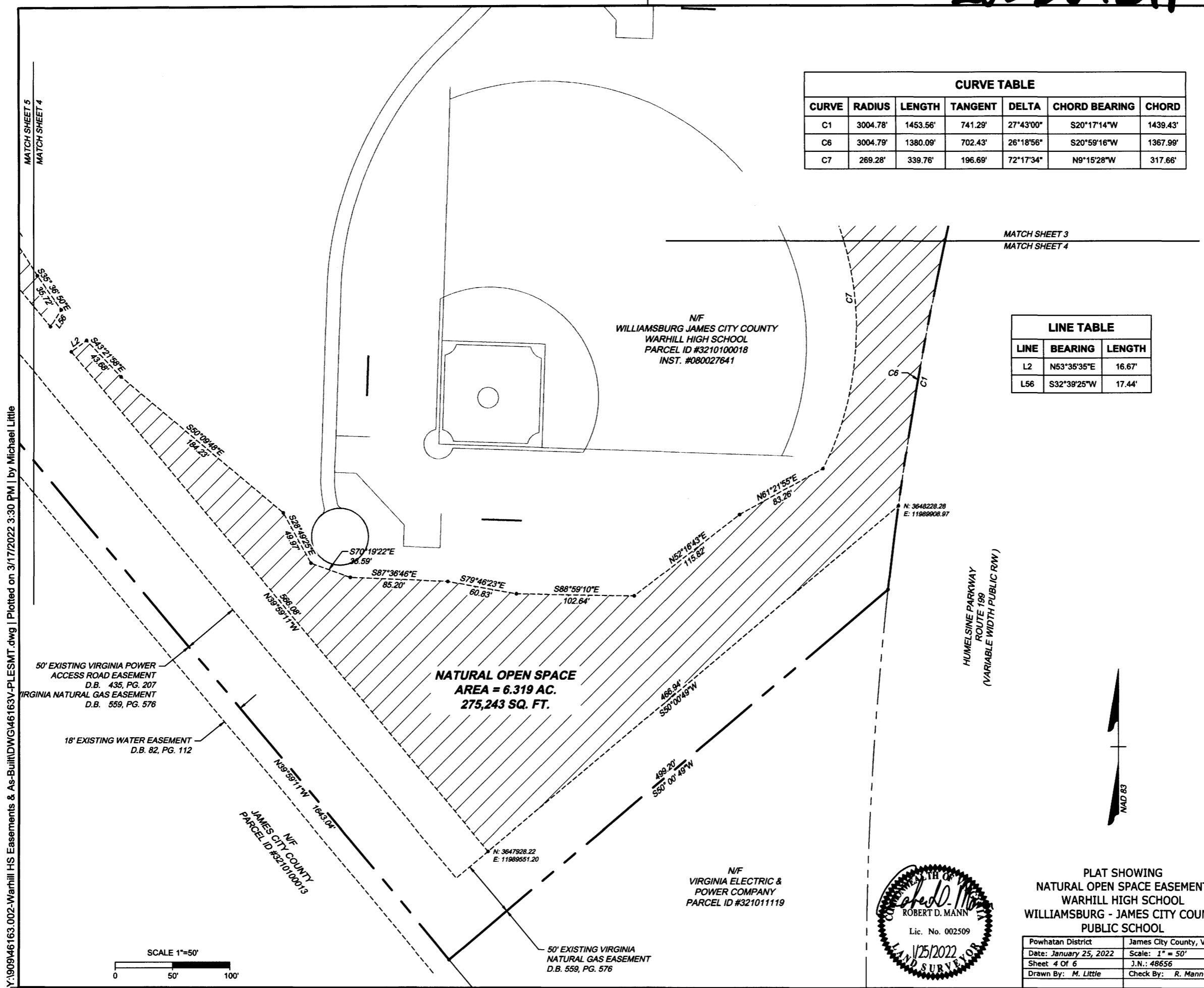
YOUR VISION ACHIEVED THROUGH OURS.
11832 Rock Landing Drive, Suite 200 | Newport News, VA 23606
TEL: 757-762-2611 | www.timmons.com

Sites Development | Residential | Infrastructure | Technology

City of Williamsburg & County of James City
Circuit Court: This PLAT was recorded on
at March 18, 2022 PG
9:46 AM/PM, PB
Document # 202204299
MONA A. FOLEY, CLERK
Mona A. Foley, Clerk

Large Small Plat(s) Recorded
herewith as # 202204299

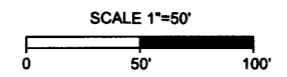
202204299



CURVE TABLE						
CURVE	RADIUS	LENGTH	TANGENT	DELTA	CHORD BEARING	CHORD
C1	3004.78'	1453.56'	741.29'	27°43'00"	S20°17'14"W	1439.43'
C6	3004.79'	1380.09'	702.43'	26°18'56"	S20°59'16"W	1367.99'
C7	269.28'	339.76'	196.69'	72°17'34"	N9°15'28"W	317.66'

LINE TABLE		
LINE	BEARING	LENGTH
L2	N53°35'35"E	16.67'
L56	S32°39'25"W	17.44'

Y:190946163.002-Warhill HS Easements & As-Built DWG46163V-PLESMT.dwg | Plotted on 3/17/2022 3:30 PM | by Michael Little



PLAT SHOWING
 NATURAL OPEN SPACE EASEMENT
 WARHILL HIGH SCHOOL
 WILLIAMSBURG - JAMES CITY COUNTY
 PUBLIC SCHOOL

Powhatan District	James City County, Va.
Date: January 25, 2022	Scale: 1" = 50'
Sheet 4 Of 6	J.N.: 48656
Drawn By: M. Little	Check By: R. Mann

TIMMONS GROUP

YOUR VISION ACHIEVED THROUGH OURS.
 Site Development Residential Infrastructure Technology

THIS DRAWING PREPARED AT THE
 HARRISON BLAIR PETERSON & ASSOCIATES, INC., VA 23066
 11432 Rock Hill, VA 23120 TEL: 757-782-3041 www.hblp.com

City of Williamsburg & County of James City
 Circuit Court: This PLAT was recorded on

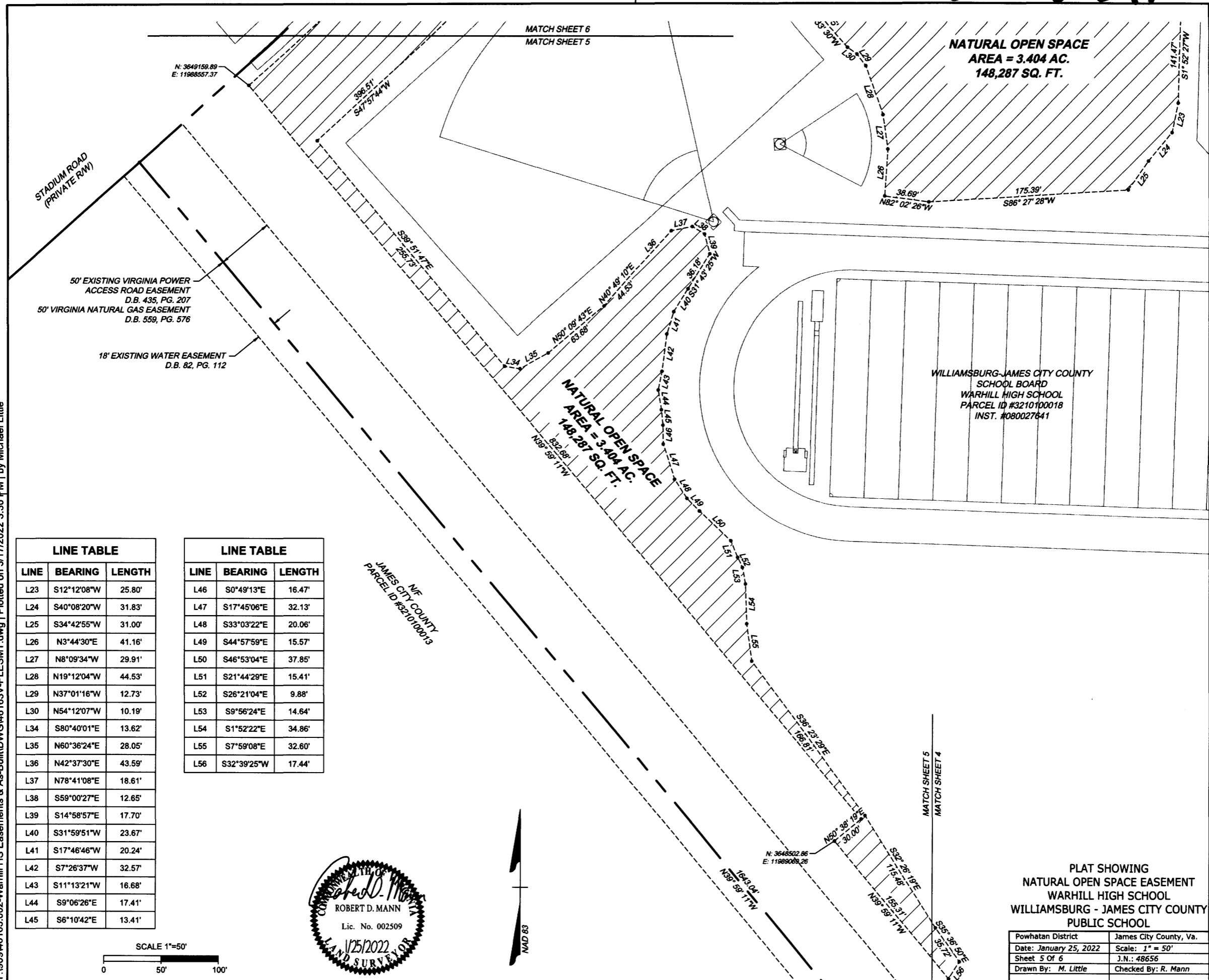
at 9:46 AM March 16, 2022 PG
 Document # 202204299
 MONA A. FOLEY, CLERK

Large (Small Plat(s) Recorded
 202204299

[Signature], Clerk

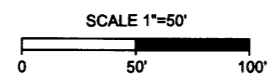
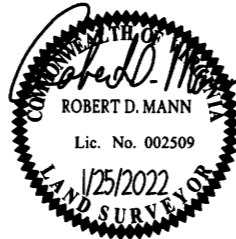
202204299

Y:\190946163.002-Warhill HS Easements & As-Built\DWG\46163V-PLESMT.dwg | Plotted on 3/17/2022 3:30 PM | by Michael Little



LINE TABLE		
LINE	BEARING	LENGTH
L23	S12°12'08"W	25.80'
L24	S40°08'20"W	31.83'
L25	S34°42'55"W	31.00'
L26	N3°44'30"E	41.16'
L27	N8°09'34"W	29.91'
L28	N19°12'04"W	44.53'
L29	N37°01'16"W	12.73'
L30	N54°12'07"W	10.19'
L34	S80°40'01"E	13.62'
L35	N60°36'24"E	28.05'
L36	N42°37'30"E	43.59'
L37	N78°41'08"E	18.61'
L38	S59°00'27"E	12.65'
L39	S14°58'57"E	17.70'
L40	S31°59'51"W	23.67'
L41	S17°46'46"W	20.24'
L42	S7°26'37"W	32.57'
L43	S11°13'21"W	16.68'
L44	S9°06'26"E	17.41'
L45	S6°10'42"E	13.41'

LINE TABLE		
LINE	BEARING	LENGTH
L46	S0°49'13"E	16.47'
L47	S17°45'06"E	32.13'
L48	S33°03'22"E	20.06'
L49	S44°57'59"E	15.57'
L50	S46°53'04"E	37.85'
L51	S21°44'29"E	15.41'
L52	S26°21'04"E	9.88'
L53	S9°56'24"E	14.64'
L54	S1°52'22"E	34.86'
L55	S7°59'08"E	32.60'
L56	S32°39'25"W	17.44'



PLAT SHOWING
 NATURAL OPEN SPACE EASEMENT
 WARHILL HIGH SCHOOL
 WILLIAMSBURG - JAMES CITY COUNTY
 PUBLIC SCHOOL

Powhatan District	James City County, Va.
Date: January 25, 2022	Scale: 1" = 50'
Sheet 5 Of 6	J.N.: 48656
Drawn By: M. Little	Checked By: R. Mann

TIMMONS GROUP

YOUR VISION ACHIEVED THROUGH OURS.
 Site Development Residential Infrastructure Technology

City of Williamsburg & County of James City
 Circuit Court: This PLAT was recorded on
 at March 18, 2022 PG
 9:46 AM, PB
 Document # 202204299
 MONA A. FOLEY, CLERK
Mona A. Foley, Clerk

Large Small Plat(s) Recorded
 herew. as # 202204299

202204299

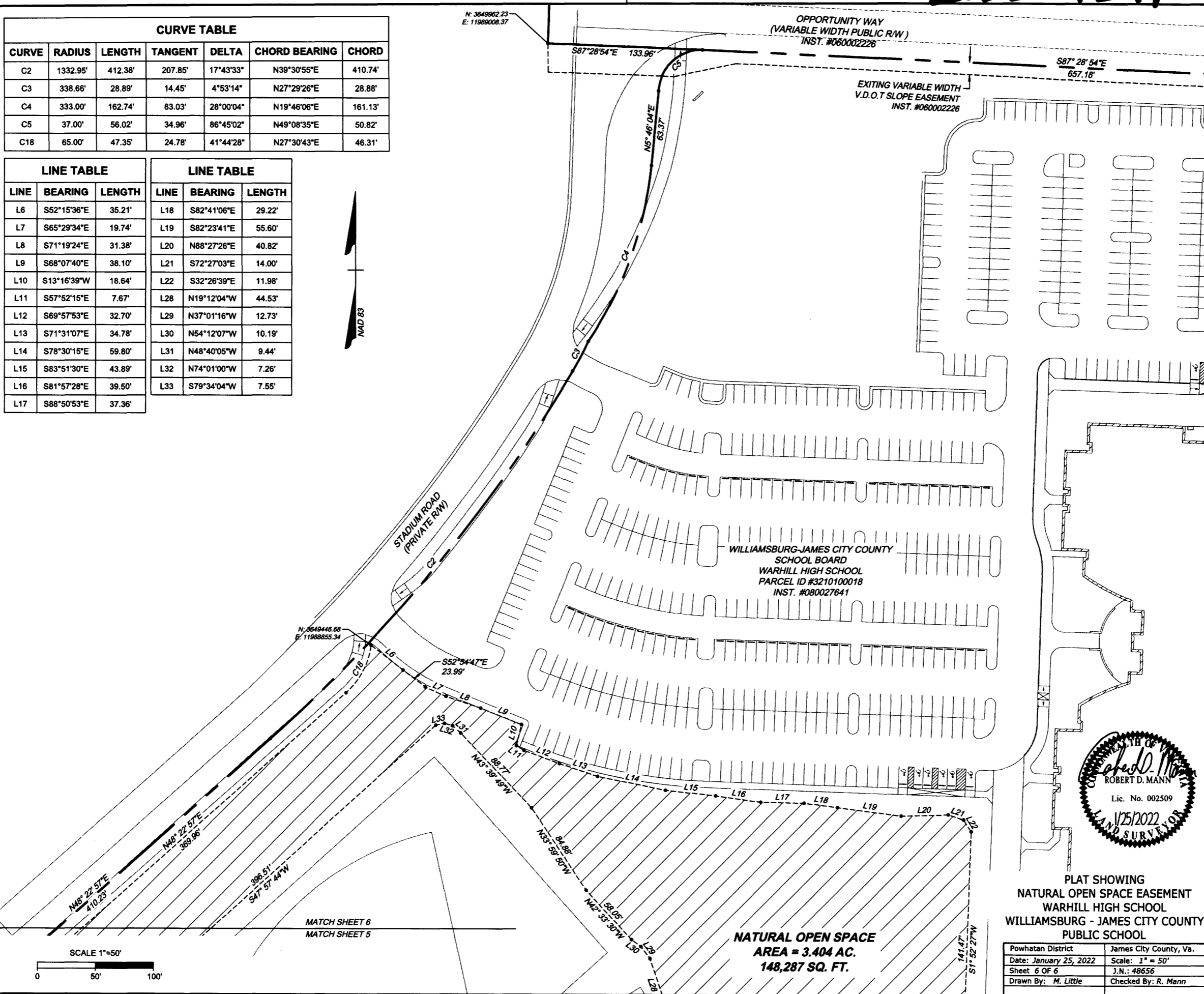
CURVE TABLE						
CURVE	RADIUS	LENGTH	TANGENT	DELTA	CHORD BEARING	CHORD
C2	1332.95'	412.38'	207.85'	17°43'33"	N39°30'55"E	410.74'
C3	338.66'	28.89'	14.45'	4°53'14"	N27°29'26"E	28.88'
C4	333.00'	162.74'	83.03'	28°00'04"	N19°46'06"E	161.13'
C5	37.00'	56.02'	34.96'	86°45'02"	N49°08'35"E	50.82'
C18	65.00'	47.35'	24.78'	41°44'28"	N27°30'43"E	46.31'

LINE TABLE		
LINE	BEARING	LENGTH
L6	S52°15'36"E	35.21'
L7	S65°29'34"E	19.74'
L8	S71°19'24"E	31.38'
L9	S68°07'40"E	38.10'
L10	S13°16'39"W	18.64'
L11	S57°52'15"E	7.67'
L12	S69°57'53"E	32.70'
L13	S71°31'07"E	34.78'
L14	S78°30'15"E	59.80'
L15	S83°51'30"E	43.89'
L16	S81°57'28"E	39.50'
L17	S88°50'53"E	37.36'

LINE TABLE		
LINE	BEARING	LENGTH
L18	S82°41'06"E	29.22'
L19	S82°23'41"E	55.60'
L20	N88°27'26"E	40.82'
L21	S72°27'03"E	14.00'
L22	S32°26'39"E	11.98'
L28	N19°12'04"W	44.53'
L29	N37°01'16"W	12.73'
L30	N54°12'07"W	10.19'
L31	N48°40'05"W	9.44'
L32	N74°01'00"W	7.26'
L33	S79°34'04"W	7.55'



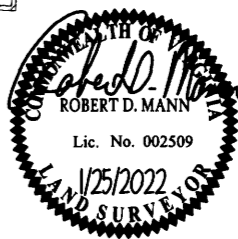
Y:\90946163.002-Warhill HS Easements & As-Built\DWG\46163V-PLESMT.dwg | Plotted on 3/17/2022 3:30 PM | by Michael Little



YOUR VISION ACHIEVED THROUGH OURS.

Site Development Residential Infrastructure Technology

TIMMONS GROUP



PLAT SHOWING
NATURAL OPEN SPACE EASEMENT
WARHILL HIGH SCHOOL
WILLIAMSBURG - JAMES CITY COUNTY
PUBLIC SCHOOL

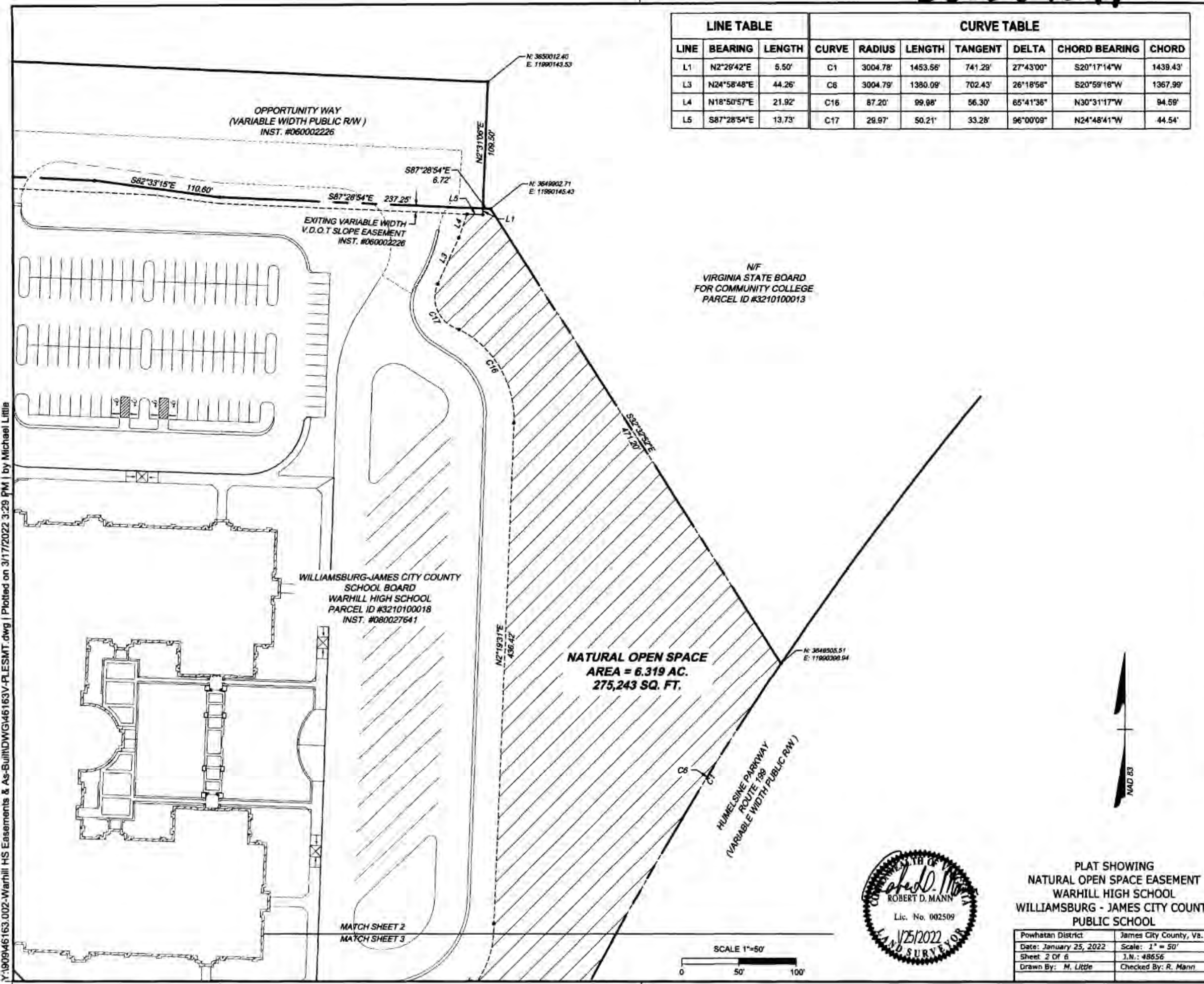
Powhatan District	James City County, Va.
Date: January 25, 2022	Scale: 1" = 50'
Sheet 6 OF 6	J.N.: 48656
Drawn By: M. Little	Checked By: R. Mann

Large/Small Plat(s) Recorded
herewith as # 202204299

City of Williamsburg & County of James City
Circuit Court: This PLAT was recorded on
March 15, 2022
at 9:40 AM/PM, PG
Document # 202204922
MONA A. FOLEY, CLERK
Mona A. Foley, Clerk

202204299

LINE TABLE			CURVE TABLE						
LINE	BEARING	LENGTH	CURVE	RADIUS	LENGTH	TANGENT	DELTA	CHORD BEARING	CHORD
L1	N2°28'42"E	5.50'	C1	3004.78'	1453.56'	741.29'	27°43'00"	S20°17'14"W	1439.43'
L3	N24°58'48"E	44.26'	C6	3004.79'	1380.09'	702.43'	26°18'58"	S20°59'16"W	1367.99'
L4	N18°50'57"E	21.92'	C16	87.20'	99.98'	56.30'	65°41'38"	N30°31'17"W	94.59'
L5	S87°28'54"E	13.73'	C17	29.97'	50.21'	33.28'	96°00'09"	N24°48'41"W	44.54'



Y:\1909\46163.002-Warhill HS Easements & As-Built\DWG\46163V-PLESMT.dwg | Plotted on 3/17/2022 3:29 PM | by Michael Little

YOUR VISION ACHIEVED THROUGH OUR:
 Site Development | Residential | Infrastructure | Technology

TIMMONS GROUP

City of Williamsburg & County of James City
 Circuit Court: This PLAT was recorded on
 at March 18, 2022
 at 9:46 AM PG
 Document # 202204299
 MONA A. FOLEY, CLERK
Mona A. Foley, Clerk

6-Large Small Plat(s) Recorded
 herewith as # 202204299

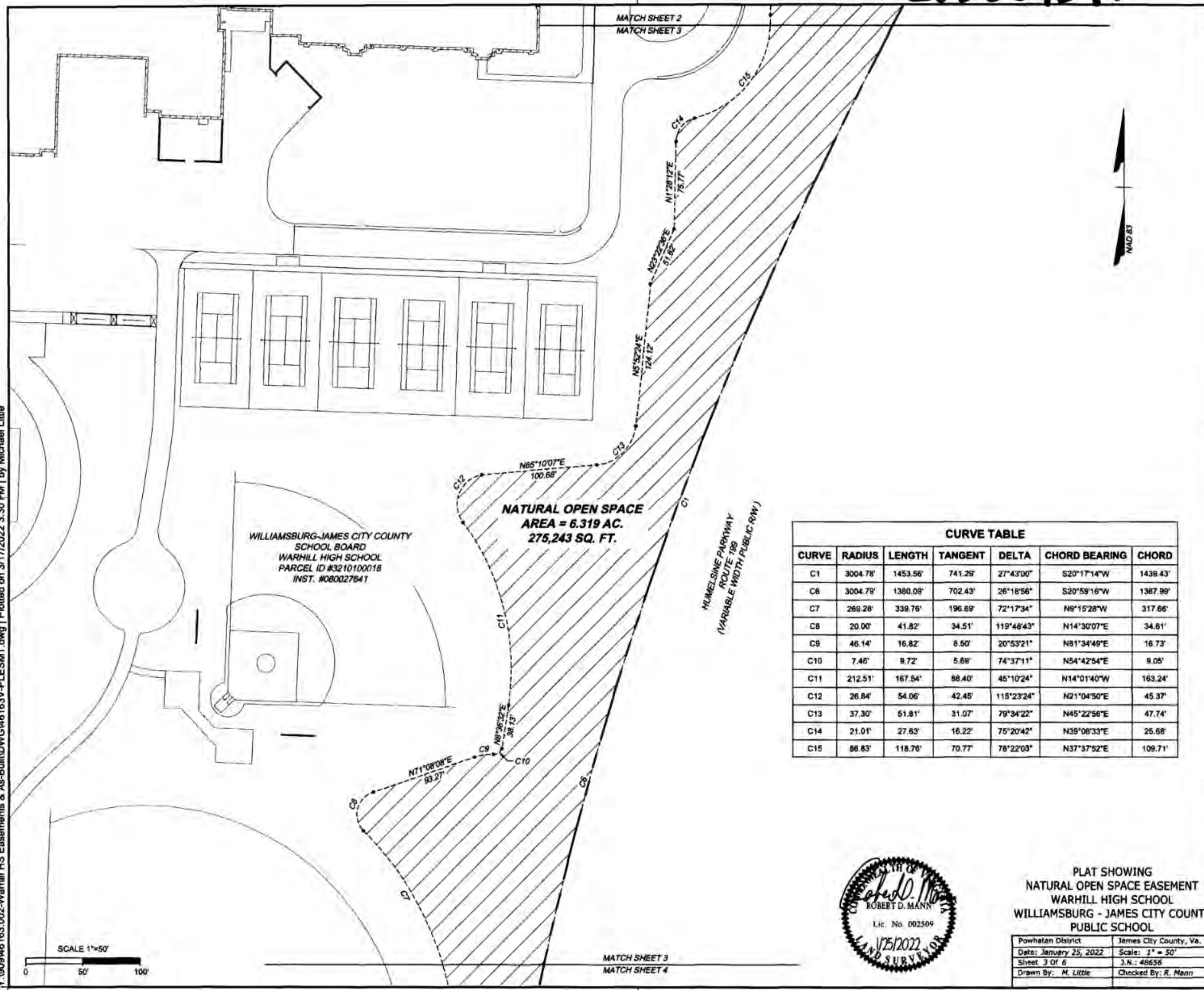


PLAT SHOWING
 NATURAL OPEN SPACE EASEMENT
 WARHILL HIGH SCHOOL
 WILLIAMSBURG - JAMES CITY COUNTY
 PUBLIC SCHOOL

Powhatan District	James City County, Va.
Date: January 25, 2022	Scale: 1" = 50'
Sheet 2 Of 6	J.N.: 4856
Drawn By: M. Little	Checked By: R. Mann

202204299

Y:\190946163.002-Warhill HS Easements & As-Built\DWG\46163V-PLESMT.dwg | Plotted on 3/17/2022 3:30 PM | by Michael Little



CURVE TABLE

CURVE	RADIUS	LENGTH	TANGENT	DELTA	CHORD BEARING	CHORD
C1	3004.78'	1453.56'	741.29'	27°43'00"	S20°17'14"W	1439.43'
C6	3004.79'	1380.09'	702.43'	26°18'56"	S20°59'16"W	1387.99'
C7	269.28'	339.76'	196.69'	72°17'34"	N9°15'28"W	317.66'
C8	20.00'	41.82'	34.51'	119°48'43"	N14°30'07"E	34.61'
C9	46.14'	16.82'	8.50'	20°53'21"	N81°34'49"E	16.73'
C10	7.46'	9.72'	5.68'	74°37'11"	N54°42'54"E	9.05'
C11	212.51'	167.54'	88.40'	45°10'24"	N14°01'40"W	163.24'
C12	26.84'	54.06'	42.45'	115°23'24"	N21°04'50"E	45.37'
C13	37.30'	51.81'	31.07'	79°34'22"	N45°22'56"E	47.74'
C14	21.01'	27.63'	16.22'	75°20'42"	N39°08'33"E	25.68'
C15	86.83'	118.76'	70.77'	78°22'03"	N37°37'52"E	109.71'



PLAT SHOWING
 NATURAL OPEN SPACE EASEMENT
 WARHILL HIGH SCHOOL
 WILLIAMSBURG - JAMES CITY COUNTY
 PUBLIC SCHOOL

Powhatan District	James City County, Va.
Date: January 25, 2022	Scale: 1" = 50'
Sheet 3 Of 6	J.N.: 48656
Drawn By: M. Little	Checked By: R. Mann

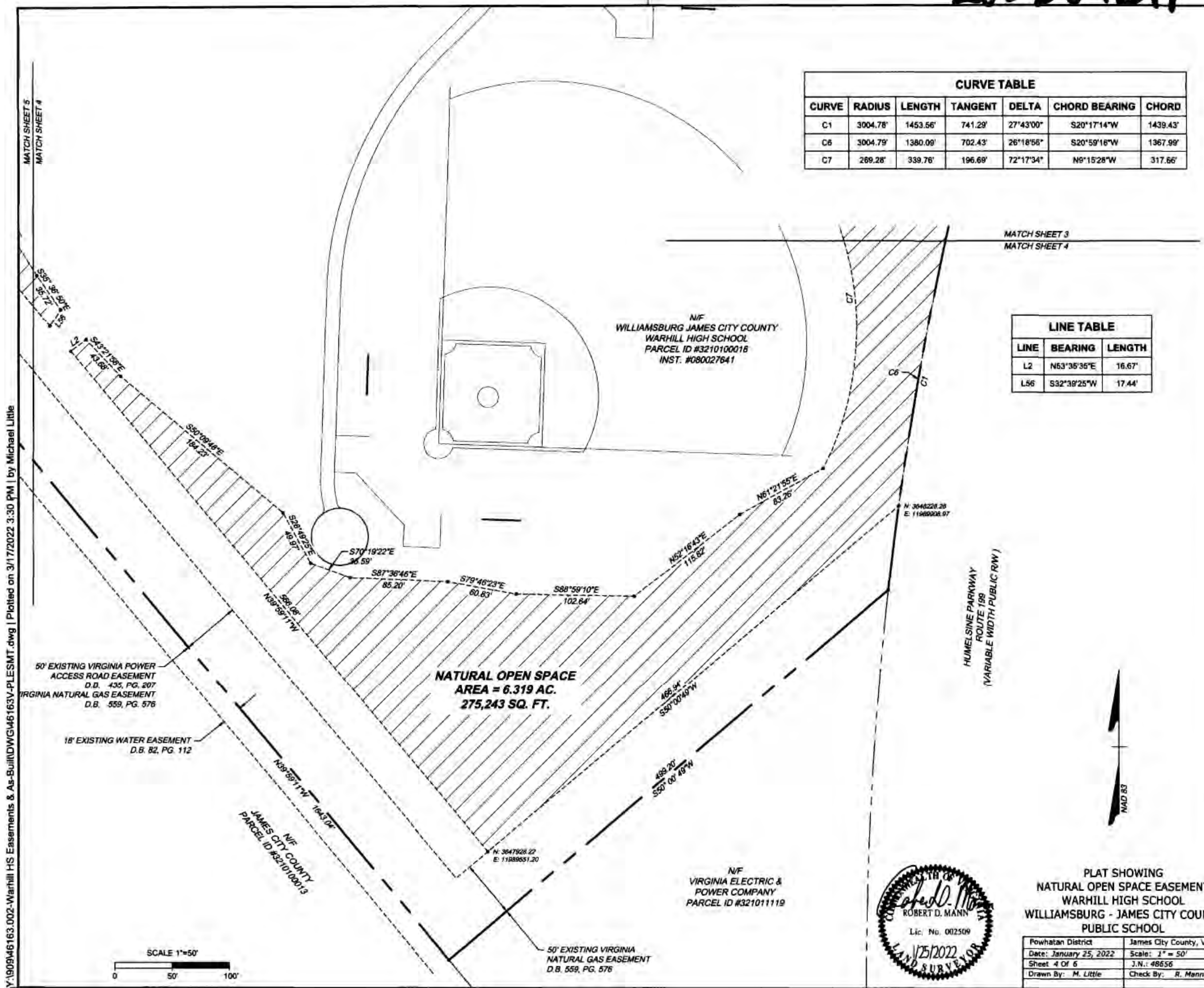
TIMMONS GROUP

YOUR VISION. AHEAD OF THROUGH CURVES
 Site Development | Residential | Infrastructure | Technology
 11813 Rock Landing Drive, Suite 100, Newport News, VA 23609
 TEL: 757-762-2011 FAX: 757-762-2012

City of Williamsburg & County of James City
 Circuit Court: This PLAT was recorded on
 at March 18, 2022 PG
 Document # 202204299
 MONA A. FOLEY, CLERK
Mona A. Foley, Clerk

Large Small Plat(s) Recorded
 hereafter as # 202204299

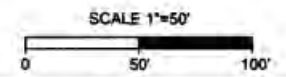
202204299



CURVE TABLE						
CURVE	RADIUS	LENGTH	TANGENT	DELTA	CHORD BEARING	CHORD
C1	3004.78'	1453.56'	741.29'	27°43'00"	S20°17'14"W	1439.43'
C6	3004.79'	1380.09'	702.43'	26°18'56"	S20°59'16"W	1367.99'
C7	289.28'	339.76'	196.69'	72°17'34"	N6°15'28"W	317.66'

LINE TABLE		
LINE	BEARING	LENGTH
L2	N53°35'35"E	16.67'
L56	S32°38'25"W	17.44'

Y:\1909M46163.002-Warhill HS Easements & As-Built\DWG\M46163V-PLESMT.dwg | Plotted on 3/17/2022 3:30 PM | by Michael Little



PLAT SHOWING
 NATURAL OPEN SPACE EASEMENT
 WARHILL HIGH SCHOOL
 WILLIAMSBURG - JAMES CITY COUNTY
 PUBLIC SCHOOL

Powhatan District	James City County, Va.
Date: January 25, 2022	Scale: 1" = 50'
Sheet 4 Of 6	J.N.: 48656
Drawn By: M. Little	Check By: R. Mann

TIMMONS GROUP

YOUR VISION ACHIEVED THROUGH OURS
 Site Development Residential Infrastructure Technology

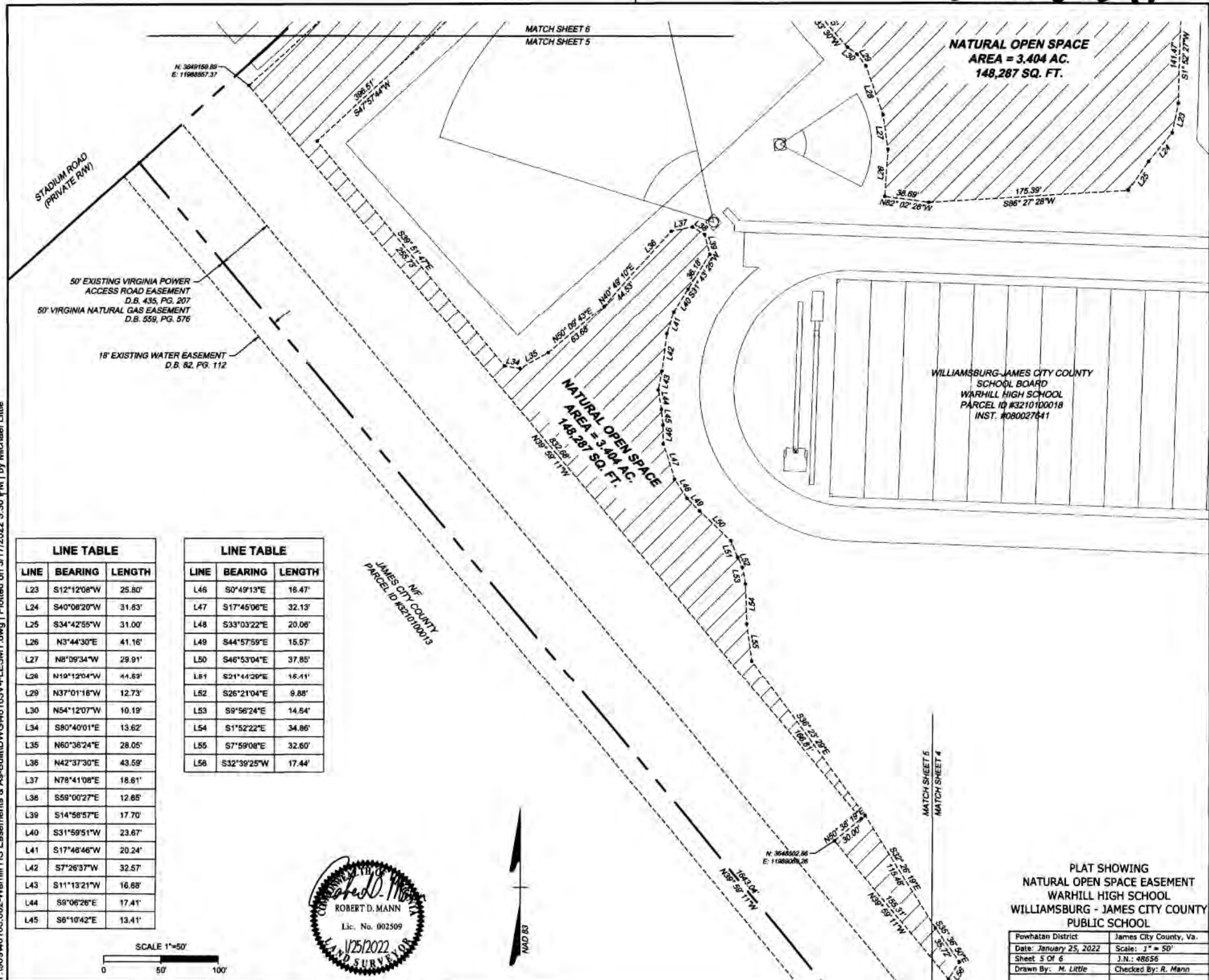
City of Williamsburg & County of James City
 Circuit Court: This PLAT was recorded on

Large (Small Plat(s) Recorded
 M.P.M. N.S.F. 202204299

at 9:46 AM PM, PB PG
 March 18, 2022
 Document # 202204299
 MONA A. FOLEY, CLERK
Mona A. Foley, Clerk

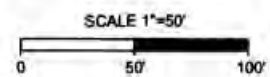
202204299

Y:\190946163.002-Warhill HS Easements & As-Built\DWG\46163V-FLESMT.dwg | Plotted on 3/17/2022 3:30 PM | by Michael Little



LINE TABLE		
LINE	BEARING	LENGTH
L23	S12°12'08"W	25.80'
L24	S40°08'20"W	31.83'
L25	S34°42'55"W	31.00'
L26	N3°44'30"E	41.16'
L27	N8°09'34"W	29.91'
L28	N19°12'04"W	44.63'
L29	N37°01'18"W	12.73'
L30	N54°12'07"W	10.19'
L34	S80°40'01"E	13.62'
L35	N60°36'24"E	28.05'
L36	N42°37'30"E	43.59'
L37	N78°41'08"E	18.61'
L38	S59°00'27"E	12.85'
L39	S14°58'57"E	17.70'
L40	S31°59'51"W	23.67'
L41	S17°48'46"W	20.24'
L42	S7°26'37"W	32.57'
L43	S11°13'21"W	16.68'
L44	S9°06'26"E	17.41'
L45	S6°10'42"E	13.41'

LINE TABLE		
LINE	BEARING	LENGTH
L46	S0°49'13"E	16.47'
L47	S17°45'06"E	32.13'
L48	S33°03'22"E	20.06'
L49	S44°57'59"E	15.57'
L50	S46°53'04"E	37.85'
L51	S21°44'26"E	16.41'
L52	S26°21'04"E	9.88'
L53	S9°56'24"E	14.54'
L54	S1°52'22"E	34.86'
L55	S7°59'08"E	32.60'
L56	S32°39'25"W	17.44'



PLAT SHOWING
 NATURAL OPEN SPACE EASEMENT
 WARHILL HIGH SCHOOL
 WILLIAMSBURG - JAMES CITY COUNTY
 PUBLIC SCHOOL

Powhatan District	James City County, Va.
Date: January 25, 2022	Scale: 1" = 50'
Sheet 5 Of 6	J.N.: 48656
Drawn By: M. Little	Checked By: R. Mann

TIMMONS GROUP

YOUR VISION ACHIEVED THROUGH OURS.
 Site Development Residential Infrastructure Technology
 11833 Rock Landing Lane, Suite 300, Norfolk, VA 23502
 Tel: 757-702-2241, www.timmons.com

City of Williamsburg & County of James City
 Circuit Court: This PLAT was recorded on
 at March 18, 2022 PG
 9:46 AM, PB
 Document # 202204299
 MONA A. FOLEY, CLERK
Mona A. Foley, Clerk

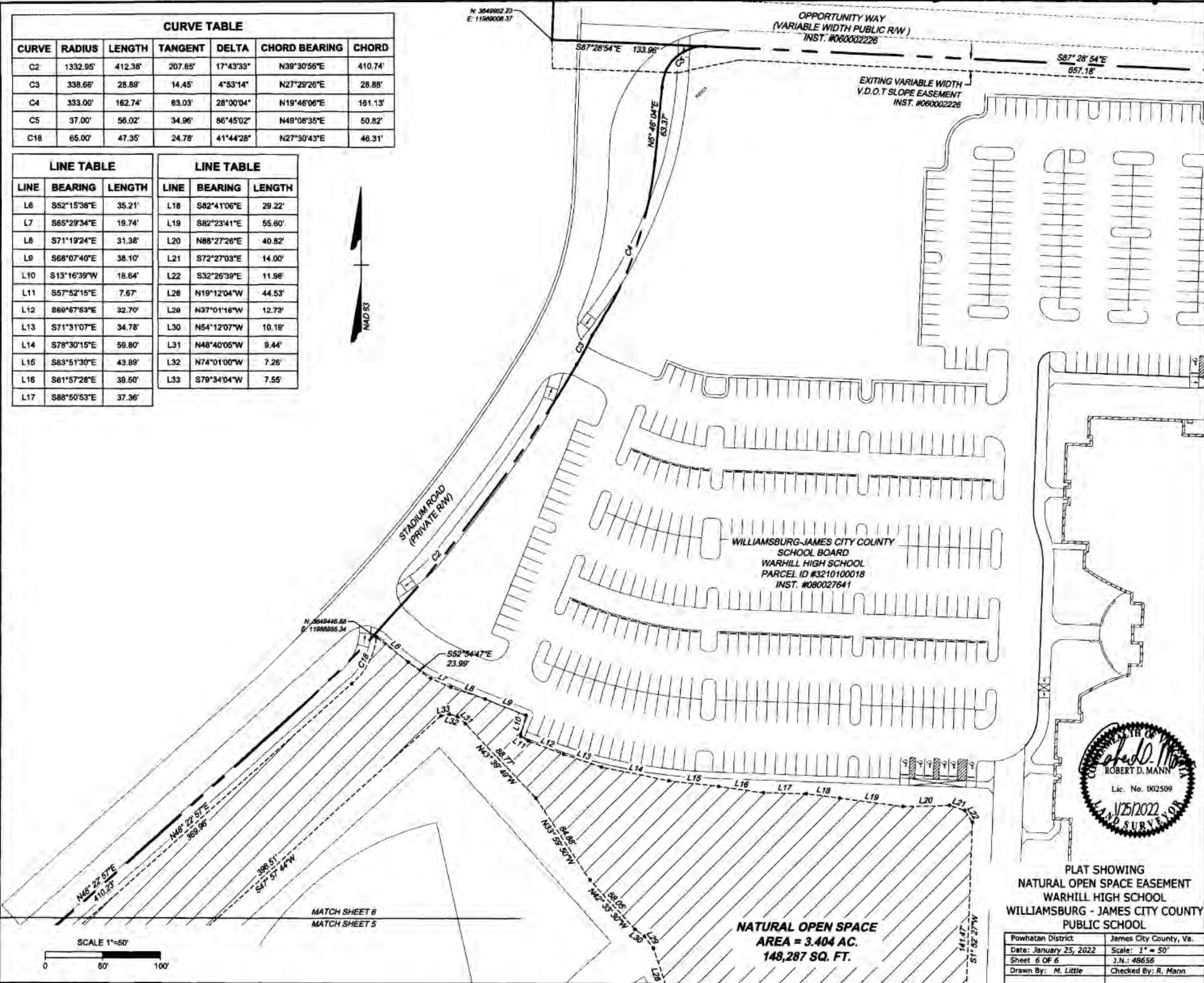
Large Small Plat(s) Recorded
 herew AS # 202204299

202204299

CURVE TABLE						
CURVE	RADIUS	LENGTH	TANGENT	DELTA	CHORD BEARING	CHORD
C2	1332.95'	412.38'	207.85'	17°43'33"	N39°30'56"E	410.74'
C3	338.66'	28.88'	14.45'	4°53'14"	N27°29'26"E	28.88'
C4	333.00'	162.74'	83.03'	28°00'04"	N19°46'06"E	161.13'
C5	37.00'	56.02'	34.96'	86°45'02"	N49°08'35"E	50.82'
C18	65.00'	47.35'	24.78'	41°44'28"	N27°30'43"E	46.31'

LINE TABLE			LINE TABLE		
LINE	BEARING	LENGTH	LINE	BEARING	LENGTH
L6	S52°15'38"E	35.21'	L18	S82°41'06"E	29.22'
L7	S65°29'34"E	19.74'	L19	S82°23'41"E	55.60'
L8	S71°19'24"E	31.38'	L20	N88°27'26"E	40.82'
L9	S68°07'40"E	38.10'	L21	S72°27'03"E	14.00'
L10	S13°16'39"W	18.64'	L22	S32°26'39"E	11.96'
L11	S57°52'15"E	7.67'	L28	N19°12'04"W	44.53'
L12	S69°67'53"E	32.70'	L29	N37°01'16"W	12.73'
L13	S71°31'07"E	34.78'	L30	N54°12'07"W	10.18'
L14	S78°30'15"E	59.80'	L31	N48°40'05"W	9.44'
L15	S63°51'30"E	43.89'	L32	N74°01'00"W	7.26'
L16	S61°57'28"E	39.60'	L33	S79°34'04"W	7.55'
L17	S88°50'53"E	37.36'			

Y:\190946163.002-Warhill HS Easements & As-Built\DWG\46163V-PLESMT.dwg | Plotted on 3/17/2022 3:30 PM | by Michael Little



YOUR VISION ACHIEVED THROUGH OURS.
 Site Development Residential Infrastructure Technology
 THIS DRAWING PREPARED BY THE
 PROFESSIONAL ENGINEER
 11431 Lees Landing Drive, Suite 301, Leesport, VA 23084
 TEL: 252.792.2601 WWW.TIMMONSGROUP.COM

TIMMONS GROUP



PLAT SHOWING
 NATURAL OPEN SPACE EASEMENT
 WARHILL HIGH SCHOOL
 WILLIAMSBURG - JAMES CITY COUNTY
 PUBLIC SCHOOL
 Powhatan District James City County, Va.
 Date: January 25, 2022 Scale: 1" = 50'
 Sheet 6 OF 6 J.N.: 48656
 Drawn By: M. Little Checked By: R. Mann

Large/Small Plat(s) Recorded
 herewith as # 202204299

City of Williamsburg & County of James City
 Circuit Court: This PLAT was recorded on
 March 18, 2022
 at 9:40 AM/PM, PG
 Document # 202204922
 MONA A. FOLEY, CLERK
 Clerk