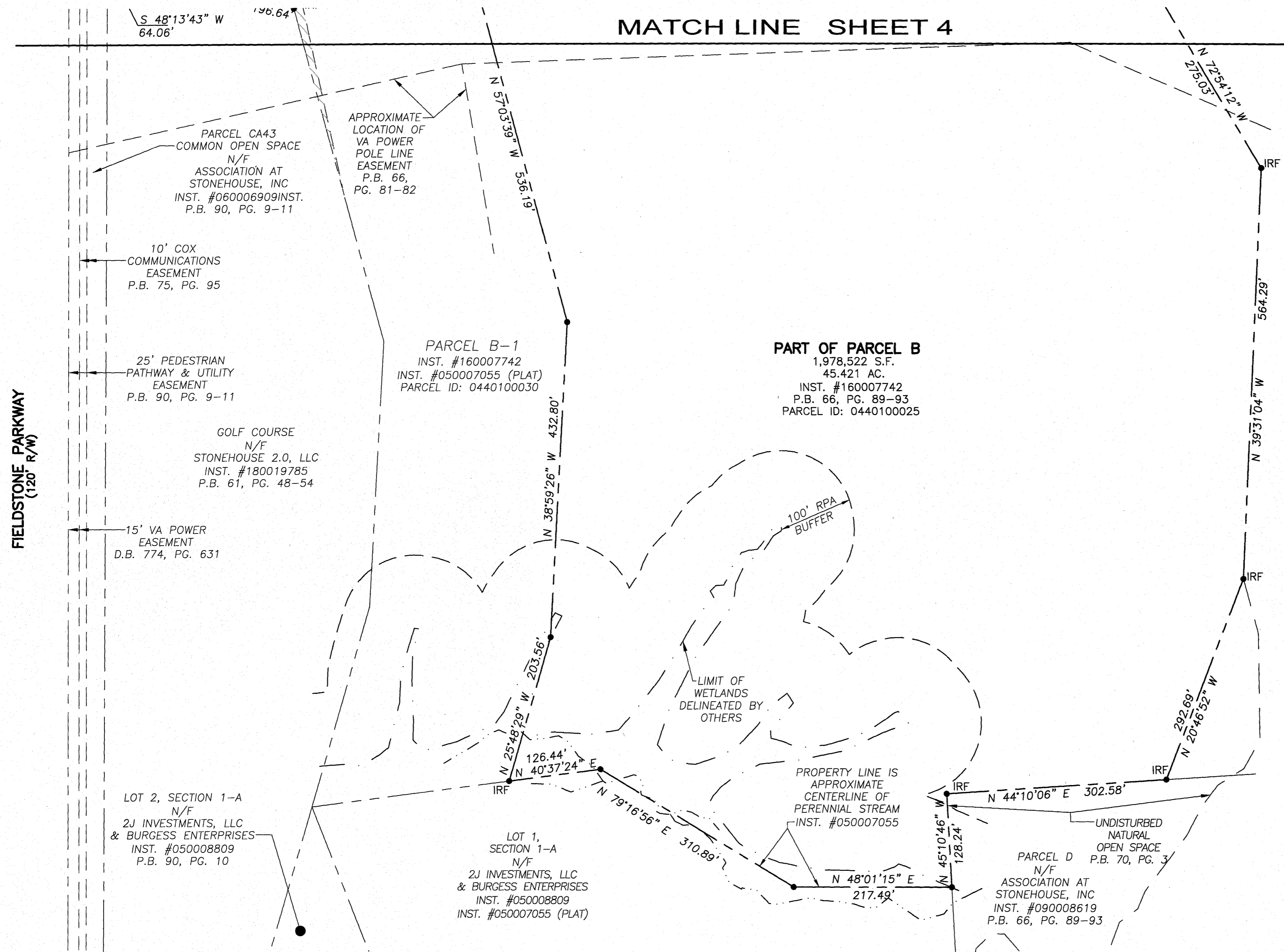


202200768

MATCH LINE SHEET 4



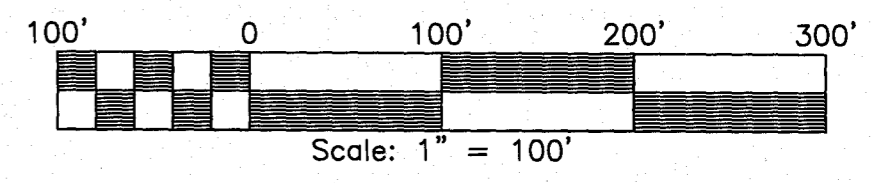
LEGEND
 NF = NAIL FOUND
 IRF = IRON ROD FOUND

BOUNDARY LINE ADJUSTMENT
 BETWEEN
**PARCEL B STONEHOUSE &
 PARCEL 18, LAGRANGE TRACT**
 STONEHOUSE DISTRICT - JAMES CITY COUNTY - VIRGINIA
 DATE: 10-05-2021 JOB # 20-224

LandTech Resources, Inc.
 Engineering & Surveying Consultants

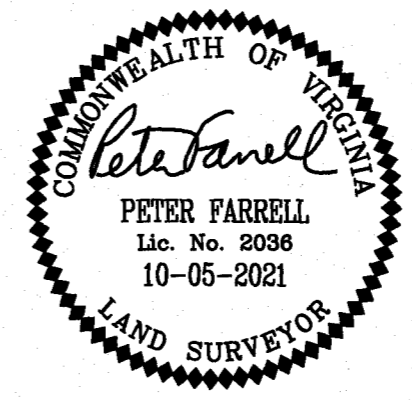
205 Bulifants Blvd., Suite E, Williamsburg, Virginia 23188
 Phone: (757) 565-1677 Fax: (757) 565-0782
 web: landtechresources.com

SHEET 3 OF 8
JCC-S-21-0028



**SEE SHEET 2 FOR
 LINE & CURVE TABLES**

City of Williamsburg & County of James City
 Circuit Court: This PLAT was recorded on
 January 19, 2022
 at 10:16 AM, PG. 3
 Document # 202200768
 MONA A. FOLEY, CLERK



80 Large/Small Plat(s) Recorded
 herewith as # 202200768