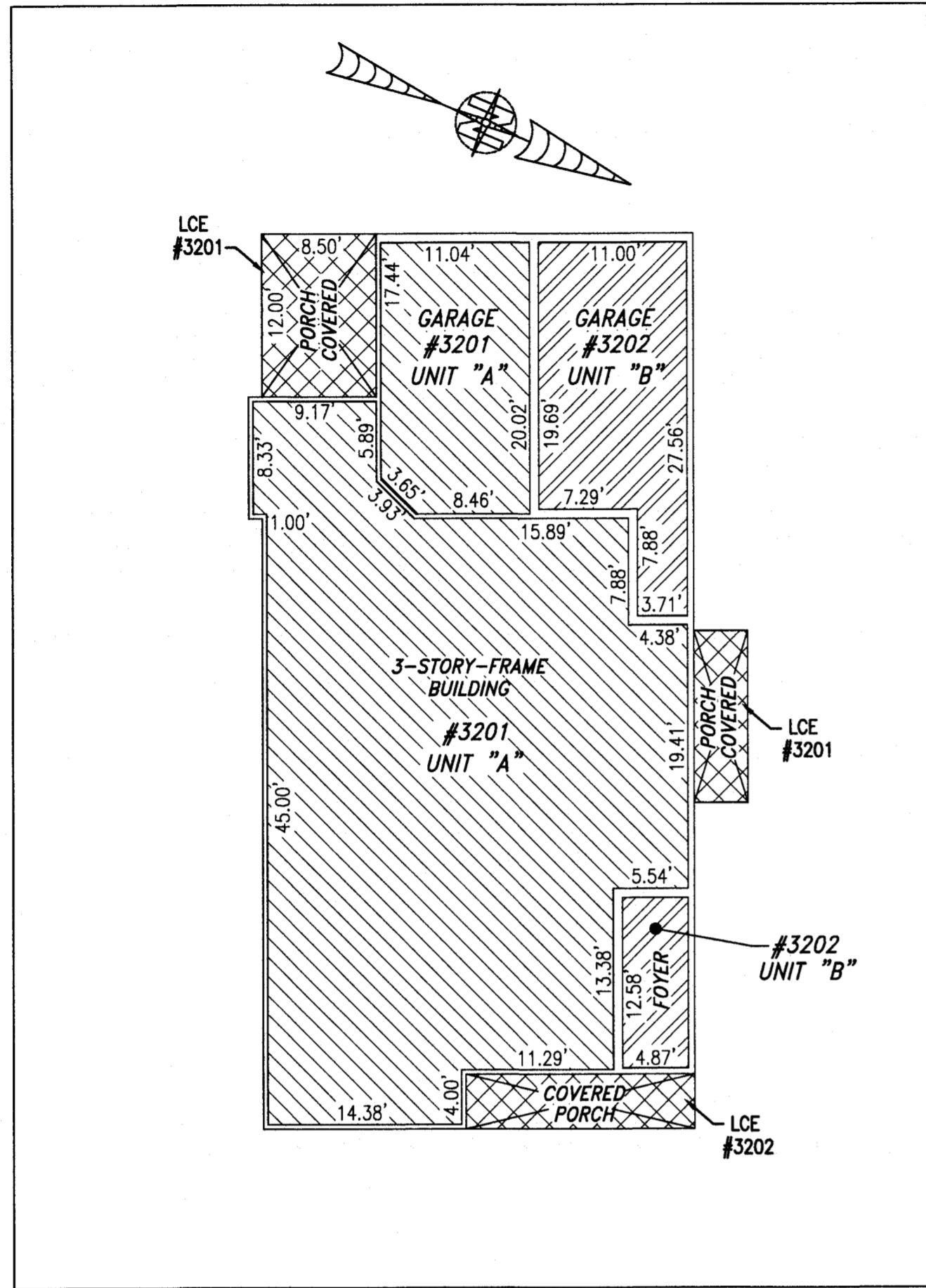
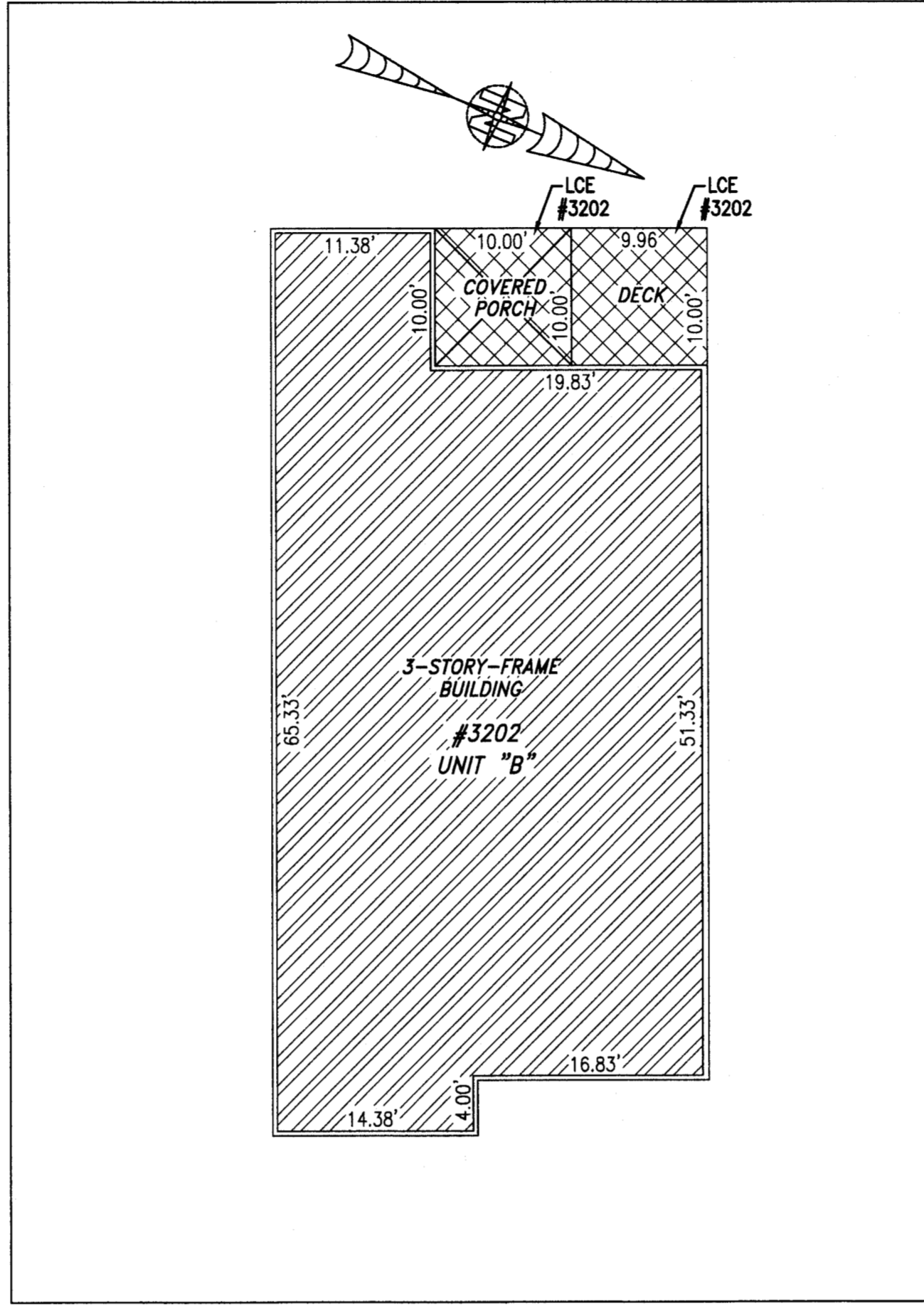


200011631

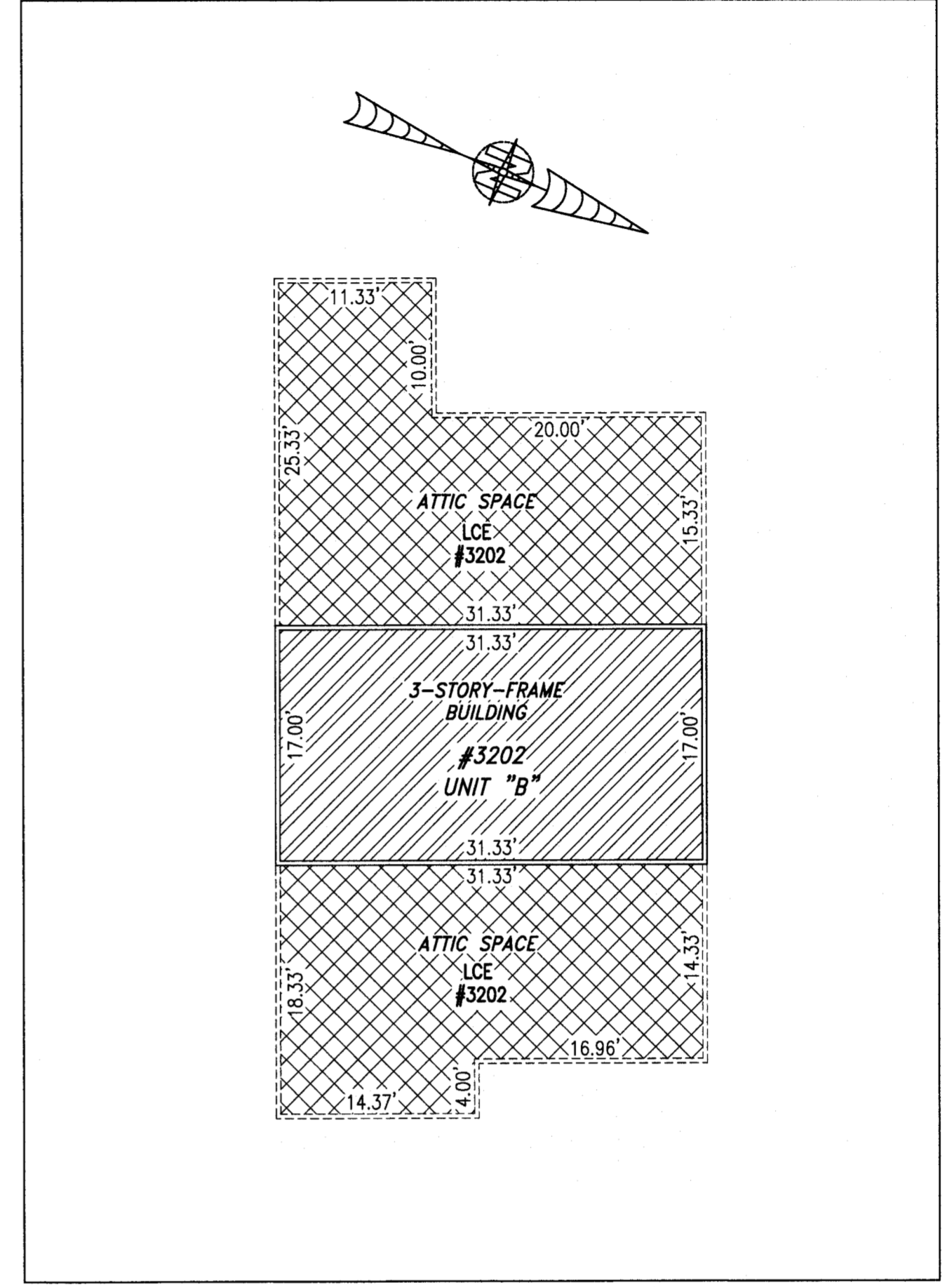
BUILDING 32 (DUPLEX)



FIRST FLOOR



SECOND FLOOR



THIRD FLOOR

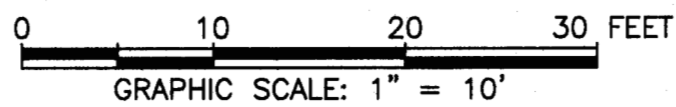
City of Williamsburg & County of James City
 Circuit Court: This PLAT was recorded on
7/30/2020
 at 9:23 AM, PM, PB _____ PG _____
 Document # 200011631
 MONA A. FOLEY, CLERK
 _____, Clerk

I HEREBY CERTIFY THAT THIS PLAT IS ACCURATE AND THAT IT
 COMPLIES WITH THE PROVISIONS OF THE CODE OF VIRGINIA OF 1950
 AS AMENDED, § 55.1-1920A & B AND I FURTHER CERTIFY THAT ALL
 IMPROVEMENTS THEREOF DEPICTED HEREON, PURSUANT TO THE CODE
 OF VIRGINIA § 55.1-1920B, ARE SUBSTANTIALLY COMPLETE.

Large/Small Plat(s) Recorded
 with as # 200011631



UNIT ID	UNIT DESCRIPTION	UNIT ADDRESS
A	-INDICATES AREA OF UNIT 3201	#3201 QUEENS PATH
B	-INDICATES AREA OF UNIT 3202	#3202 QUEENS PATH
	-INDICATES COMMON ELEMENT	
	-INDICATES LIMITED COMMON ELEMENT	



THIS SHEET: FLOOR PLANS

PHASE 32
CONDOMINIUM PLAT AND PLAN
 OF
THE PROMENADE
 AT
JOHN TYLER
 A CONDOMINIUM
 JAMES CITY COUNTY, VIRGINIA

Job# 160921

Hayden Frye and Associates, Inc.
Land Surveyors
 333 KELLAM ROAD, SUITE 200
 VIRGINIA BEACH, VA., 23462
 PH: (757) 491-7228 FX: (757) 491-7229

DATE: JULY 14, 2020
 SCALE: 1"=10'
 SHEET 5 OF 5 THIS PHASE