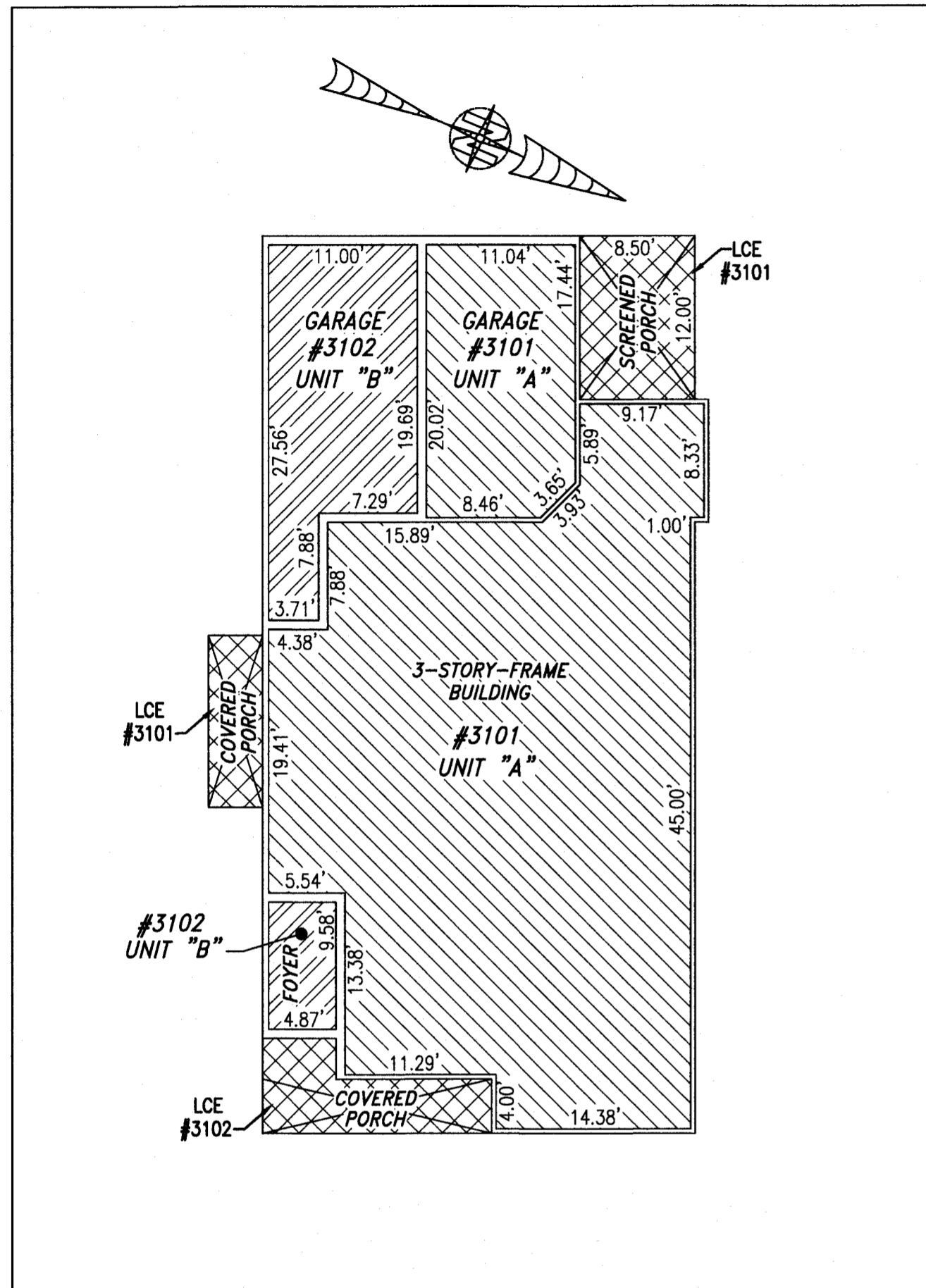
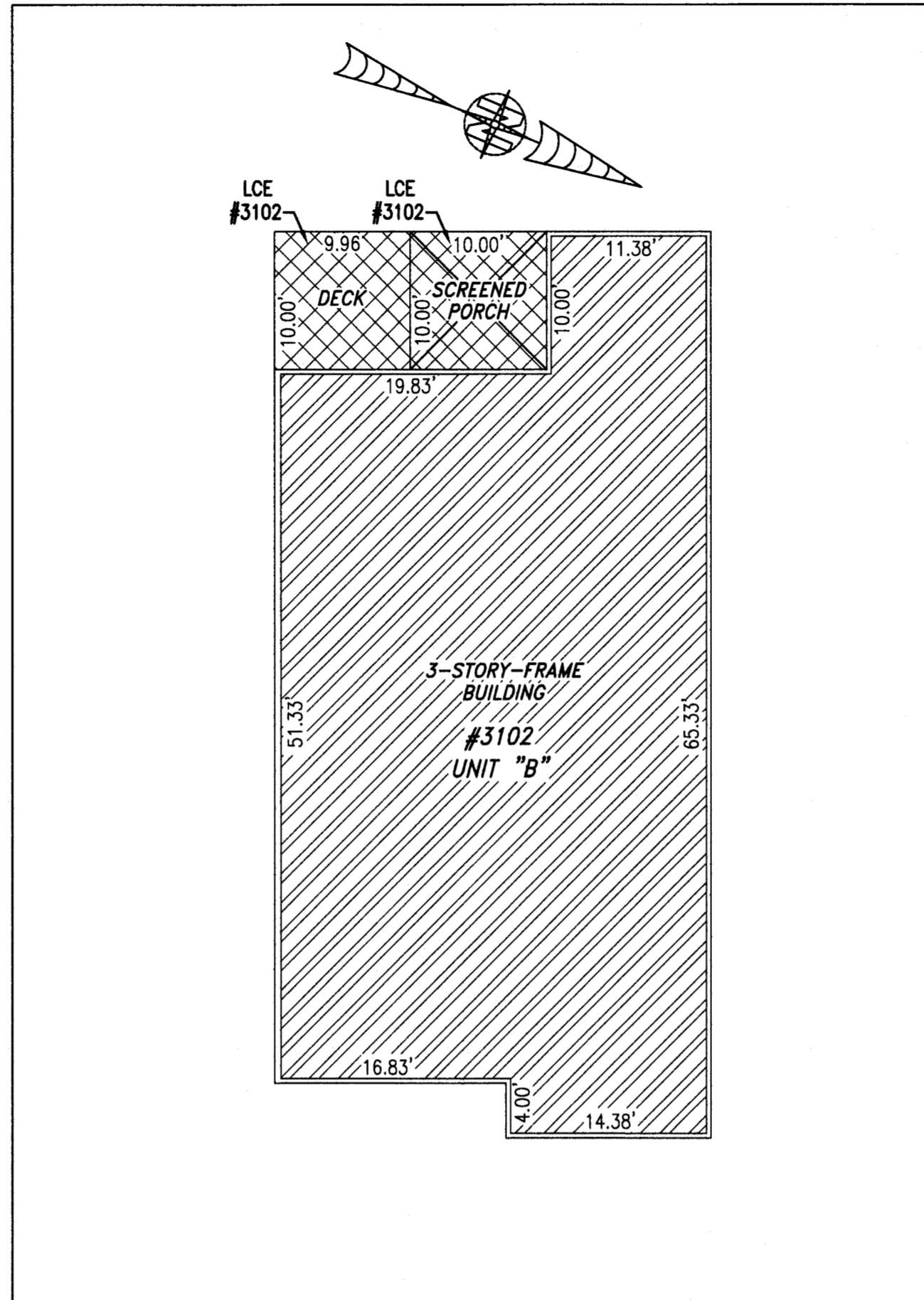


200011630

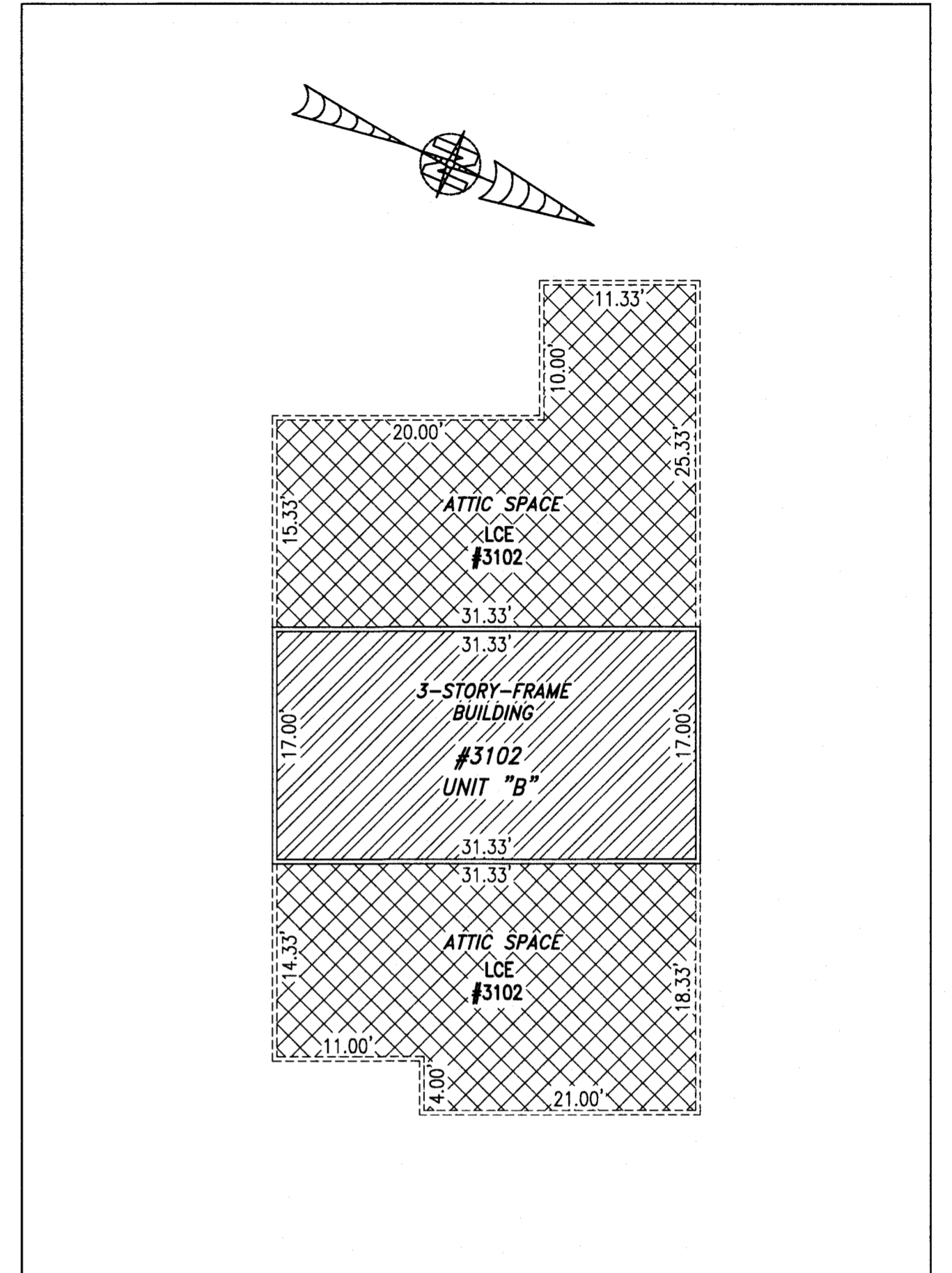
BUILDING 31 (DUPLEX)



FIRST FLOOR



SECOND FLOOR



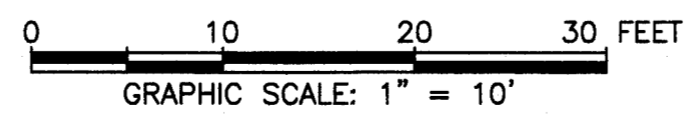
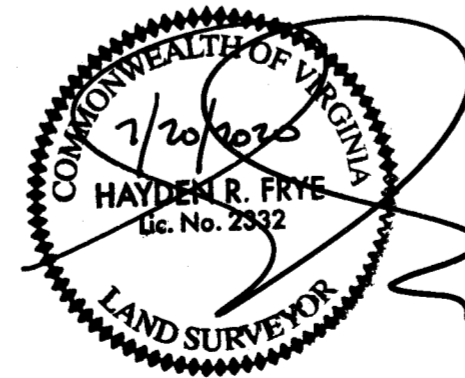
THIRD FLOOR

UNIT ID	UNIT DESCRIPTION	UNIT ADDRESS
A	-INDICATES AREA OF UNIT 3101	#3101 QUEENS PATH
B	-INDICATES AREA OF UNIT 3102	#3102 QUEENS PATH
	-INDICATES COMMON ELEMENT	
	-INDICATES LIMITED COMMON ELEMENT	

I HEREBY CERTIFY THAT THIS PLAT IS ACCURATE AND THAT IT COMPLIES WITH THE PROVISIONS OF THE CODE OF VIRGINIA OF 1950 AS AMENDED, § 55.1-1920A & B AND I FURTHER CERTIFY THAT ALL IMPROVEMENTS THEREOF DEPICTED HEREON, PURSUANT TO THE CODE OF VIRGINIA § 55.1-1920B, ARE SUBSTANTIALLY COMPLETE.

5 Large/Small Plat(s) Recorded herewith as # 200011630

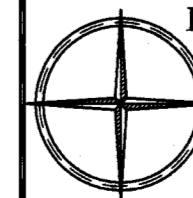
City of Williamsburg & County of James City Circuit Court: This PLAT was recorded on 7/20/2020 at 9:21 AM/PM, PB PG Document # 200011630 MONA A. FOLEY, CLERK



THIS SHEET: FLOOR PLANS

PHASE 31
 CONDOMINIUM PLAT AND PLAN
 OF
 THE PROMENADE
 AT
 JOHN TYLER
 A CONDOMINIUM
 JAMES CITY COUNTY, VIRGINIA

Jo# 160921



Hayden Frye and Associates, Inc.
 Land Surveyors
 333 KELLAM ROAD, SUITE 200
 VIRGINIA BEACH, VA., 23462
 PH: (757) 491-7228 FX: (757) 491-7229

DATE: JULY 13, 2020

SCALE: 1"=10'

SHEET 5 OF 5 THIS PHASE