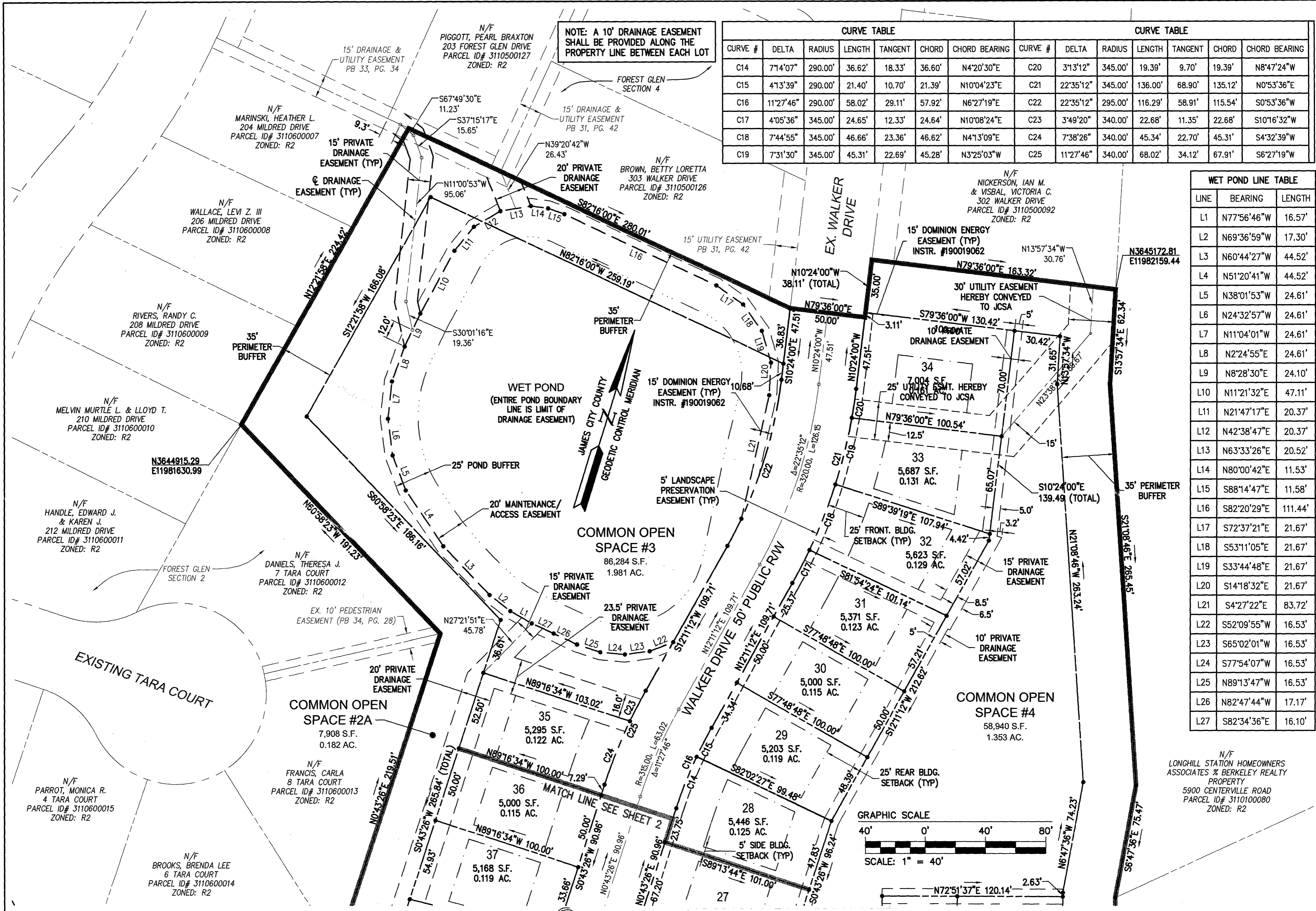
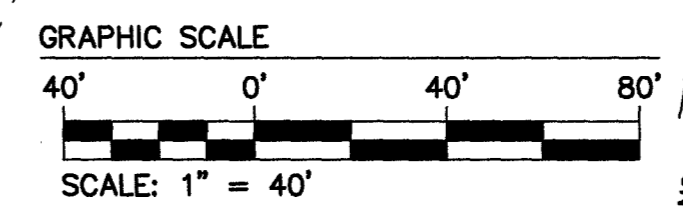


200009024

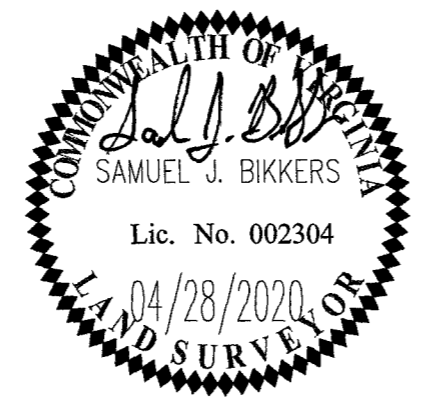


CURVE TABLE						CURVE TABLE							
CURVE #	DELTA	RADIUS	LENGTH	TANGENT	CHORD	CHORD BEARING	CURVE #	DELTA	RADIUS	LENGTH	TANGENT	CHORD	CHORD BEARING
C14	71°4'07"	290.00'	36.62'	18.33'	36.60'	N4°20'30"E	C20	31°3'12"	345.00'	19.39'	9.70'	19.39'	N8°47'24"W
C15	41°3'39"	290.00'	21.40'	10.70'	21.39'	N10°04'23"E	C21	22°35'12"	345.00'	136.00'	68.90'	135.12'	N0°53'36"E
C16	11°27'46"	290.00'	58.02'	29.11'	57.92'	N6°27'19"E	C22	22°35'12"	295.00'	116.29'	58.91'	115.54'	S0°53'36"W
C17	4°05'36"	345.00'	24.65'	12.33'	24.64'	N10°08'24"E	C23	3°49'20"	340.00'	22.68'	11.35'	22.68'	S10°16'32"W
C18	7°44'55"	345.00'	46.66'	23.36'	46.62'	N4°13'09"E	C24	7°38'26"	340.00'	45.34'	22.70'	45.31'	S4°32'39"W
C19	7°31'30"	345.00'	45.31'	22.69'	45.28'	N3°25'03"W	C25	11°27'46"	340.00'	68.02'	34.12'	67.91'	S6°27'19"W

WET POND LINE TABLE		
LINE	BEARING	LENGTH
L1	N77°56'46"W	16.57'
L2	N69°36'59"W	17.30'
L3	N60°44'27"W	44.52'
L4	N51°20'41"W	44.52'
L5	N38°01'53"W	24.61'
L6	N24°32'57"W	24.61'
L7	N11°04'01"W	24.61'
L8	N2°24'55"E	24.61'
L9	N8°28'30"E	24.10'
L10	N11°21'32"E	47.11'
L11	N21°47'17"E	20.37'
L12	N42°38'47"E	20.37'
L13	N63°33'26"E	20.52'
L14	N80°00'42"E	11.53'
L15	S88°14'47"E	11.58'
L16	S82°20'29"E	111.44'
L17	S72°37'21"E	21.67'
L18	S53°11'05"E	21.67'
L19	S33°44'48"E	21.67'
L20	S14°18'32"E	21.67'
L21	S4°27'22"E	83.72'
L22	S52°09'55"W	16.53'
L23	S65°02'01"W	16.53'
L24	S77°54'07"W	16.53'
L25	N89°13'47"W	16.53'
L26	N82°47'44"W	17.17'
L27	S82°34'36"E	16.10'



Rev.	Date	Description	Revised By
3	04/28/20	REVISED SHEET 2 TO SHOW WALKER DRIVE AS PUBLIC RW	JFS
2	09/13/19	REVISED PER COMMENTS DATED 09/2019	RMS
1	07/24/19	REVISED PER COMMENTS DATED 02/2019	RMS



Large/Small Plat(s) Recorded
herewith as # 200009024



City of Williamsburg & County of James City
Circuit Court: This PLAT was recorded on
June 23, 2020
at 1:26 AM PM, PB PG
Document # 200009024
MONA A. FOLEY, CLERK
Mona A. Foley Clerk

JCC CASE NO. S-20-0022
PLAT OF CORRECTION
PLAT OF SUBDIVISION
LOTS 14 THRU 40 AND
COMMON OPEN SPACES #1A, #2A, #3 AND #4
FOREST GLEN
SECTION 5 - PHASE 1
OWNER / DEVELOPER: FOREST GLEN ASSOCIATES, LLC
POWHATAN DISTRICT JAMES CITY COUNTY VIRGINIA

Project Contacts:	SJB/TRS
Project Number:	6195-02
Scale:	1"=40'
Date:	01/24/19
Sheet Number	3 of 3