

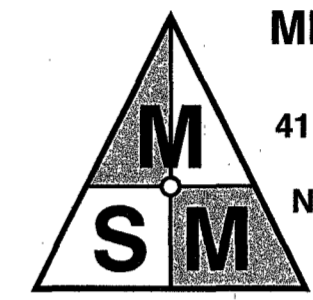
20008258

PLAT OF BOUNDARY LINE  
EXTINGUISHMENT SHOWING

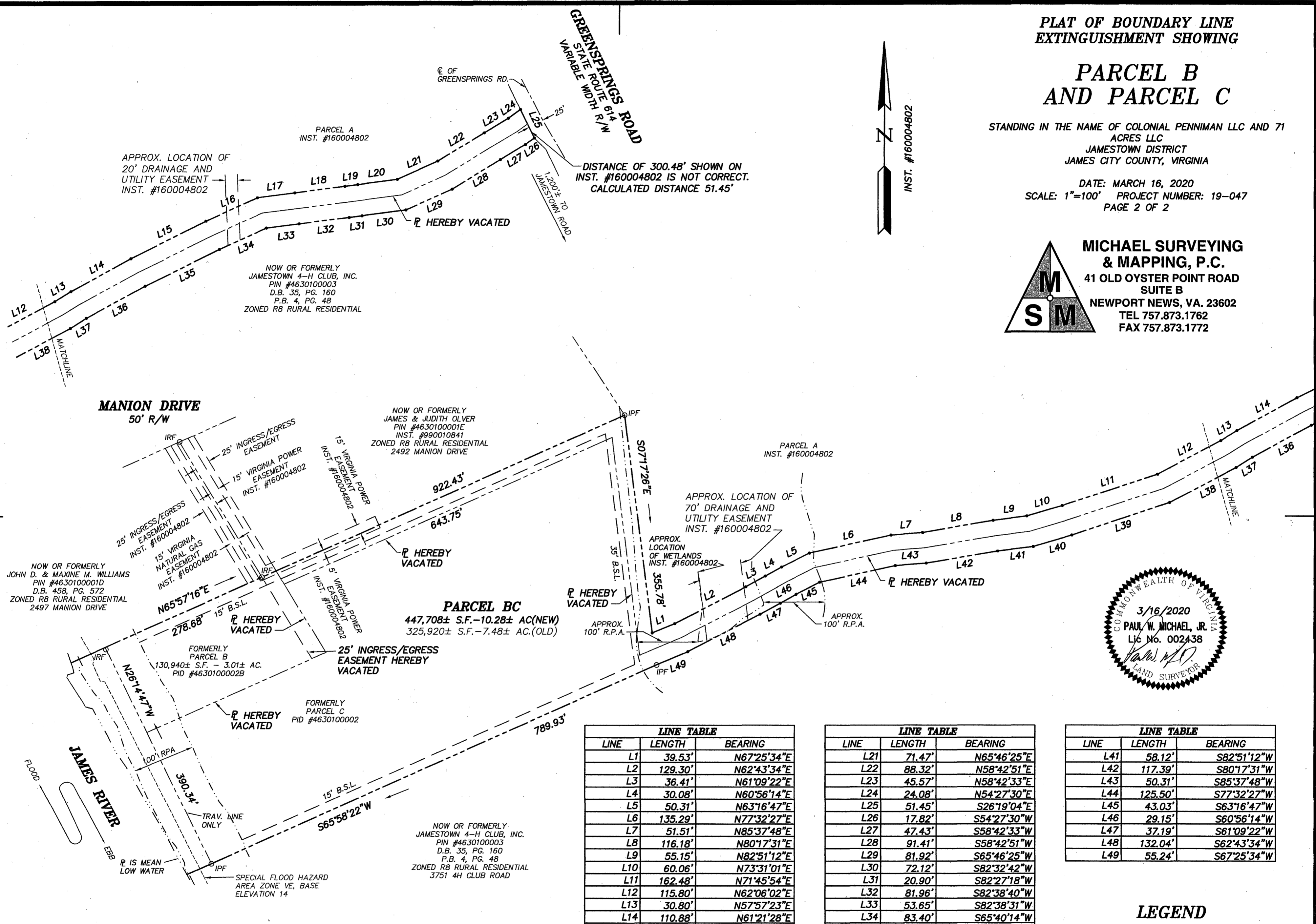
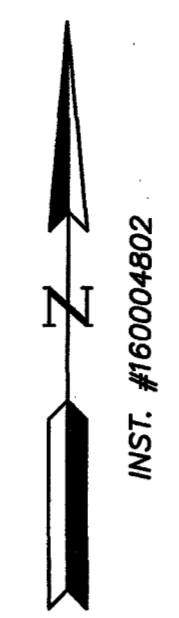
PARCEL B  
AND PARCEL C

STANDING IN THE NAME OF COLONIAL PENNIMAN LLC AND 71  
ACRES LLC  
JAMESTOWN DISTRICT  
JAMES CITY COUNTY, VIRGINIA

DATE: MARCH 16, 2020  
SCALE: 1"=100' PROJECT NUMBER: 19-047  
PAGE 2 OF 2



**MICHAEL SURVEYING  
& MAPPING, P.C.**  
41 OLD OYSTER POINT ROAD  
SUITE B  
NEWPORT NEWS, VA. 23602  
TEL 757.873.1762  
FAX 757.873.1772



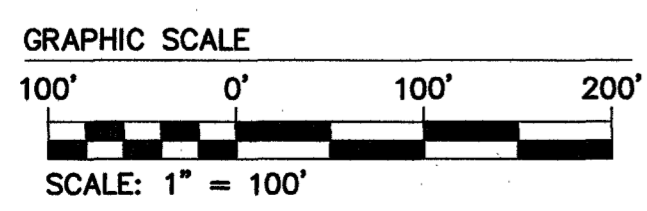
LINE TABLE		
LINE	LENGTH	BEARING
L1	39.53'	N67°25'34"E
L2	129.30'	N62°43'34"E
L3	36.41'	N61°09'22"E
L4	30.08'	N60°56'14"E
L5	50.31'	N63°16'47"E
L6	135.29'	N77°32'27"E
L7	51.51'	N85°37'48"E
L8	116.18'	N80°17'31"E
L9	55.15'	N82°51'12"E
L10	60.06'	N73°31'01"E
L11	162.48'	N71°45'54"E
L12	115.80'	N62°06'02"E
L13	30.80'	N57°57'23"E
L14	110.88'	N61°21'28"E
L15	135.87'	N63°33'20"E
L16	91.64'	N65°40'14"E
L17	61.11'	N82°38'31"E
L18	81.86'	N82°38'40"E
L19	20.86'	N82°27'18"E
L20	64.79'	N82°32'42"E

LINE TABLE		
LINE	LENGTH	BEARING
L21	71.47'	N65°46'25"E
L22	88.32'	N58°42'51"E
L23	45.57'	N58°42'33"E
L24	24.08'	N54°27'30"E
L25	51.45'	S26°19'04"E
L26	17.82'	S54°27'30"W
L27	47.43'	S58°42'33"W
L28	91.41'	S58°42'51"W
L29	81.92'	S65°46'25"W
L30	72.12'	S82°32'42"W
L31	20.90'	S82°27'18"W
L32	81.96'	S82°38'40"W
L33	53.65'	S82°38'31"W
L34	83.40'	S65°40'14"W
L35	133.99'	S63°53'20"W
L36	108.29'	S61°21'28"W
L37	31.12'	S57°57'23"W
L38	121.84'	S62°06'02"W
L39	167.47'	S71°45'54"W
L40	64.91'	S73°31'01"W

LINE TABLE		
LINE	LENGTH	BEARING
L41	58.12'	S82°51'12"W
L42	117.39'	S80°17'31"W
L43	50.31'	S85°37'48"W
L44	125.50'	S77°32'27"W
L45	43.03'	S63°16'47"W
L46	29.15'	S60°56'14"W
L47	37.19'	S61°09'22"W
L48	132.04'	S62°43'34"W
L49	55.24'	S67°25'34"W

LEGEND

- DENOTES IRON ROD SET
- CMF (CONC MON FOUND)
- IRF (IRON ROD FOUND)
- IPF (IRON PIPE FOUND)
- IPS (IRON PIPE SET)



City of Williamsburg & County of James City  
Circuit Court: This PLAT was recorded on  
June 10, 2020  
at 10:52 AM/PM, PB      PG       
Document # 20008258  
MONA A. FOLEY, CLERK  
*Mona A. Foley*, Clerk

2 Large/Small Plat(s) Recorded  
herewith as # 20008258

JCC PROJECT #S-20-0016

MAP CHECKED: BAM - 5/27/20