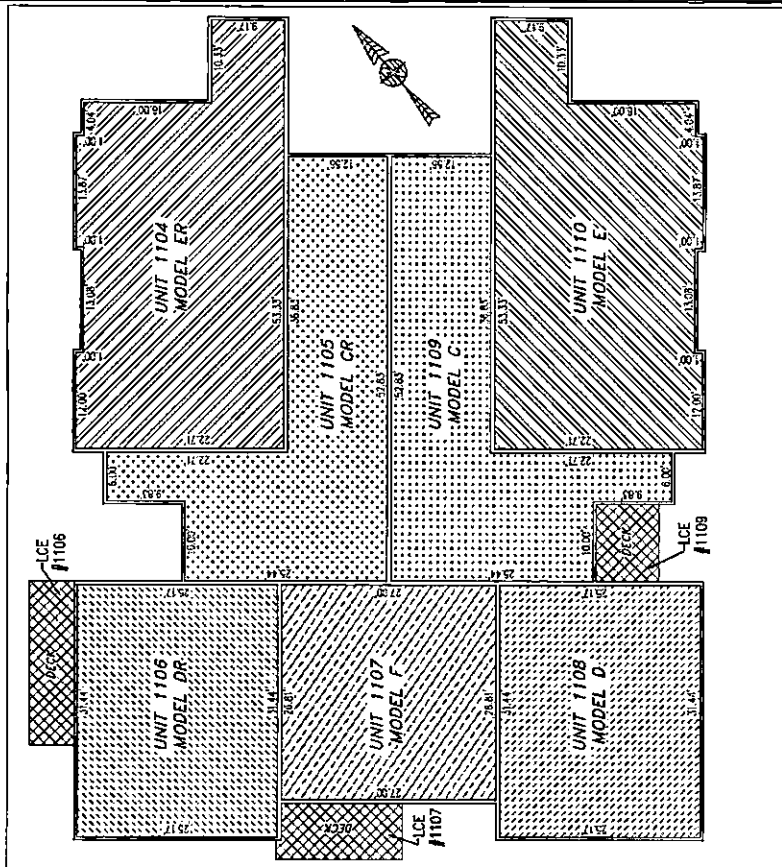
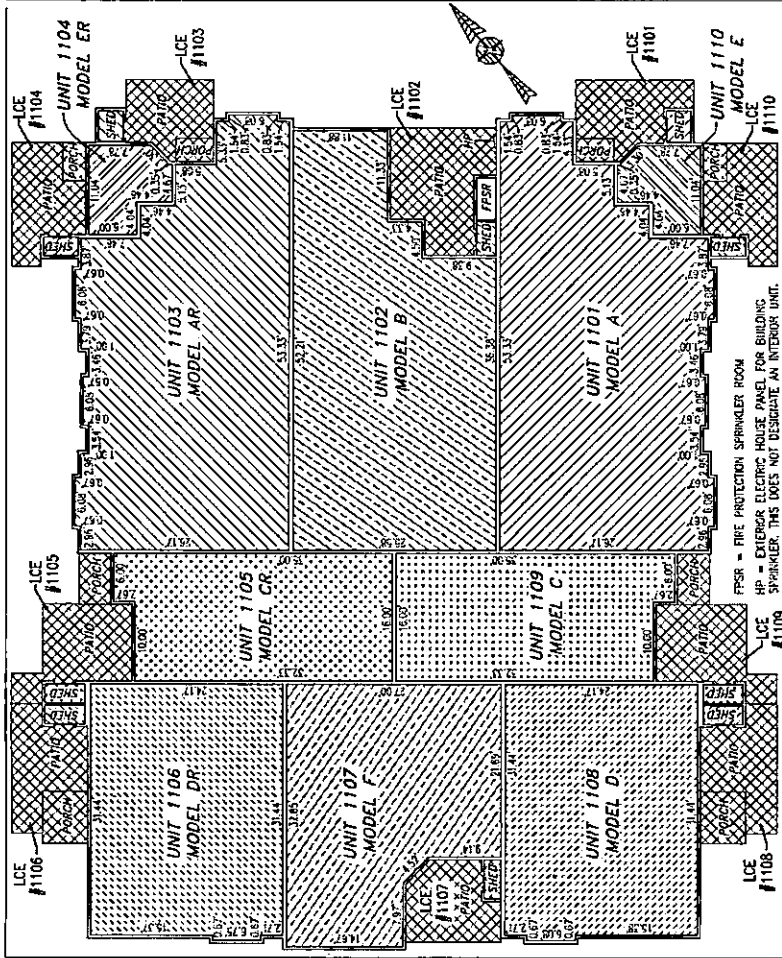


BUILDING 11 (10-PLEX)

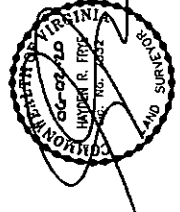


FIRST FLOOR

SECOND FLOOR

UNIT ID	UNIT DESCRIPTION	UNIT ADDRESS	PARKING SPACE
A	INDICATES AREA OF UNIT 1101	#1101 MONARCH COURT	209
B	INDICATES AREA OF UNIT 1102	#1102 MONARCH COURT	208
AR	INDICATES AREA OF UNIT 1103	#1103 MONARCH COURT	207
ER	INDICATES AREA OF UNIT 1104	#1104 MONARCH COURT	206
CR	INDICATES AREA OF UNIT 1105	#1105 MONARCH COURT	204
DR	INDICATES AREA OF UNIT 1106	#1106 MONARCH COURT	201
F	INDICATES AREA OF UNIT 1107	#1107 MONARCH COURT	194
D	INDICATES AREA OF UNIT 1108	#1108 MONARCH COURT	191
E	INDICATES AREA OF UNIT 1109	#1109 MONARCH COURT	180
E	INDICATES AREA OF UNIT 1110	#1110 MONARCH COURT	189
HP	FIRE PROTECTION SPRINKLER ROOM	#1111 MONARCH COURT	N/A
FPSR	FIRE PROTECTION SPRINKLER ROOM	#1112 MONARCH COURT	N/A
	INDICATES COMMON ELEMENT (EXCLUDING AREAS OUTSIDE OF SUBMITTED LAND)		
	INDICATES LIMITED COMMON ELEMENT (LCE) ASSIGNED TO A UNIT. / UNIT ASSIGNED		

I HEREBY CERTIFY THAT THIS PLAN IS ACCURATE AND THAT IT COMPLES WITH THE PROVISIONS OF THE CODE OF VIRGINIA OF 1950 AS AMENDED, § 55.1-1920A & B AND I FURTHER CERTIFY THAT ALL IMPROVEMENTS THEREOF DEPICTED HEREON, PURSUANT TO THE CODE OF VIRGINIA § 55.1-1920B, ARE SUBSTANTIALLY COMPLETE.



THIS SHEET: FLOOR PLANS

PHASE 11
 CONDOMINIUM PLAT AND PLAN
 OF
THE PROMENADE
 AT
JOHN TYLER
 A CONDOMINIUM
 JAMES CITY COUNTY, VIRGINIA

DATE: MAY 26, 2020
 SCALE: 1"=10'
 SHEET 5 OF 5 THIS PHASE

Hayden Frye and Associates, Inc.
 Land Surveyors
 111 WILLIAM ROAD, SUITE 200
 VIRGINIA BEACH, VA, 23462
 PH: (757) 491-7287 FAX: (757) 491-7285

9910